



Government Gazette

OF THE STATE OF
NEW SOUTH WALES

Number 119
Friday, 9 November 2012

Published under authority by the Department of Premier and Cabinet

LEGISLATION

Online notification of the making of statutory instruments

Week beginning 29 October 2012

THE following instruments were officially notified on the NSW legislation website (www.legislation.nsw.gov.au) on the dates indicated:

Regulations and other statutory instruments

Children (Detention Centres) Amendment (Chaplains) Regulation 2012 (2012-541) —
published LW 2 November 2012

Environmental Planning and Assessment Amendment (Fees) Regulation 2012 (2012-542) —
published LW 2 November 2012

Western Sydney Parklands Amendment Order 2012 (2012-543) — published LW 2 November 2012

Work Health and Safety Amendment (Miscellaneous) Regulation 2012 (2012-544) —
published LW 2 November 2012

OFFICIAL NOTICES**Appointments****CRIMES (ADMINISTRATION OF SENTENCES)
ACT 1999**

Official Visitor Corrective Services Appointments

FROM 1 October 2011 for a period up to 30 September 2013:

Diane Ivy McKERN

Peter Alan MILSOM

Arthur Rex TURNER

GREG SMITH, S.C., M.P.,
Attorney General and Minister for Justice

WATER MANAGEMENT ACT 2000

Appointment
Cobar Water Board

HER Excellency, the Governor, with the advice of the Executive Council and in pursuance of Clauses 5 and 22 of Schedule 5 to the Water Management Act 2000, appoints Mr Anthony LORD to the Cobar Water Board for the term commencing 24 October 2012 and ending 30 November 2014.

KATRINA HODGKINSON, M.P.,
Minister for Primary Industries

Roads and Maritime Services

ROAD TRANSPORT (GENERAL) ACT 2005

Class 3 2012/13 Grain Harvest Season Mass Exemption Notice 2012

I, Peter Wells, acting Chief Executive of the Roads and Maritime Services pursuant to clause 25 of the Road Transport (Mass, Loading and Access) Regulation 2005 (the Regulation), do, by this Notice, exempt from the mass limits set out in Table 1 of Schedule 1 to the Regulation, the combinations described in Part 2 of the Schedule to this Notice subject to the conditions and requirements set out in the Notice.

PETER WELLS,
A/Chief Executive
Roads and Maritime Services

SCHEDULE

PART 1 – PRELIMINARY

1.1 Citation

This Notice is the Class 3 2012/13 Grain Harvest Season Mass Exemption Notice 2012.

1.2 Commencement

This Notice takes effect on 9 November 2012.

1.3 Effect

This Notice remains in force up to and including 31 January 2013 subject to any amendments unless it is earlier revoked.

1.4 Interpretation

Unless stated otherwise, the words and expressions used in this Notice have the same meaning as those defined in the Road Transport (General) Act 2005.

PART 2 – APPLICATION

2.1 Application

2.1.1 Except as provided by paragraph 2.1.2, this Notice applies to vehicles or combinations carrying grain produce only and complying with the requirements of Parts 3 and 4 of this Notice.

2.1.2 This Notice does not apply to:

- (a) pig trailers or a combination containing one or more pig trailers; or
- (b) a truck and dog trailer combination operating under the Class 3 Truck and Dog Trailer Combination Notice 2010; or
- (c) vehicles and combinations with a single axle group that is not a steer or drive axle group; or
- (d) a Special Purpose Vehicle, an agricultural machine, or agricultural implement, a low loader, a low loader dolly and a low loader, a jinker, or a low loader dolly and jinker; or
- (e) a complying bus, an ultra-low floor bus, or an articulated ultra-low floor bus, or a bus licensed to carry standing passengers; or
- (f) a vehicle or combination operating under Clause 7 (Higher Mass Limits) of Schedule 1 to the Regulation; or
- (g) a vehicle or combination operating under any other permit, Notice or other exemption that allows axle or axle group masses, not including the steer axle, to exceed those specified in Table 1 of Schedule 1 of the Regulation.

PART 3 – OPERATION AND TRAVEL REQUIREMENTS

3.1 Operating requirements

3.1.1 A copy of this Notice must be carried in the driving compartment of a vehicle operating under this Notice and must be produced in response to a request by a Police Officer or an authorised officer.

3.1.2 A person operating a vehicle or combination under this Notice must comply with all of the conditions of the Notice.

3.2 Approved Routes

3.2.1 A vehicle or combination operating under this Notice must travel by the safest direct route from a place or places at which grain is loaded to a grain storage facility.

3.2.2 A vehicle or combination operating under this Notice is not permitted to enter into the precincts of any port in New South Wales.

- 3.2.3 A vehicle or combination operating under this Notice may not travel to:
- (a) any place within a 50 km radius of:
 - (i) the General Post Office at Sydney; or
 - (ii) the Council Chambers at Wollongong; or
 - (iii) the Council Chambers at Newcastle, or
 - (b) in any Local Government Area (LGA) where any part of the LGA is within a 50 km radius of the places specified in paragraphs 3.2.3 (a) (i) to (iii).

3.2.4 The LGAs to which paragraph 3.2.3 (b) applies are:

Ashfield Council	Maitland City Council
Auburn City Council	Manly Council
Bankstown City Council	Marrickville Council
Blacktown City Council	Mosman Municipal Council
The Council of the City of Botany Bay	Newcastle City Council
Burwood Council	North Sydney Council
Camden Council	Parramatta City Council
Campbelltown City Council	Penrith City Council
City of Canada Bay Council	Pittwater Council
Canterbury City Council	Port Stephens Council
Cessnock City Council	Randwick City Council
Dungog Shire Council	Rockdale City Council
Fairfield City Council	Ryde City Council
Gosford City Council	Shellharbour City Council
Great Lakes Council	Shoalhaven City Council
Hawkesbury City Council	Singleton Council
The Hills Shire Council	Strathfield Municipal Council
Holroyd City Council	Sutherland Shire Council
The Council of the Shire of Hornsby	Council of the City of Sydney
The Council of the Municipality of Hunters Hill	Warringah Council
Hurstville City Council	Waverley Council
The Council of the Municipality of Kiama	Willoughby City Council
Kogarah City Council	Wingecarribee Shire Council
Ku-ring-gai Council	Wollondilly Shire Council
Lake Macquarie City Council	Wollongong City Council
Lane Cove Municipal Council	Woollahra Municipal Council
Leichhardt Municipal Council	Wyong Shire Council
Liverpool City Council	

PART 4 – MASS LIMITS

4.1 Total mass limits – combinations

- 4.1.1 The total mass of a combination to which this Notice applies must not exceed the lowest of the following:
- (a) the sum of the axle and axle group mass limits in Table 1 of this Notice; or
 - (b) the GCM limit specified by the prime mover manufacturer; or
 - (c) the sum of the manufacturer's mass limits for the prime mover (GVM) and the trailer or trailers (GTM) it is towing; or
 - (d) 5% above the gross mass limit that applies to the vehicle under Table 1 of Schedule 1 of the Regulation, subject to:
 - (i) a maximum of 1 tonne for a vehicle or combination with an allowable gross mass not exceeding 55 tonnes;
 - (ii) a maximum of 2 tonnes for a vehicle or combination with an allowable gross mass exceeding 55 tonnes.

4.2 Axle and axle group mass limits

4.2.1 A combination to which this Notice applies must not exceed the axle group mass limits set out in Table 1 of this Notice.

Table 1

<i>Axle Group</i>	<i>Mass Limit</i>
STEER AXLE GROUPS	
Single steer axle	6.0 tonnes
Twinsteer axle groups	
Twinsteer axle group without a load-sharing suspension system	10.0 tonnes
Twinsteer axle group with a load-sharing suspension system	11.0 tonnes
NON-STEER AXLE GROUPS	
Tandem axle group	
<ul style="list-style-type: none"> • fitted with single tyres with a section width of <ul style="list-style-type: none"> (a) less than 375 mm (b) 375 mm or more but less than 450 mm (c) 450 mm or more • fitted with single tyres on one axle and dual tyres on the other axle • fitted with dual tyres 	11.5 tonnes 13.8 tonnes 14.5 tonnes 13.5 tonnes 17.0 tonnes
Tri-axle group	
<ul style="list-style-type: none"> • fitted with single tyres with a section width of less than 375 mm on 1, 2 or all axles of the axle group • fitted with single tyres with a section width of at least 375 mm or dual tyres 	15.0 tonnes 21.0 tonnes
Quad-axle group	
<ul style="list-style-type: none"> • fitted with single tyres with a section width of less than 375 mm on 1, 2 or all axles of the axle group • fitted with single tyres with a section width of at least 375 mm or dual tyres 	15.5 tonnes 21.0 tonnes

ROADS ACT 1993

Order

Byron Shire Council area

Declaration as Freeway (including partial Repeal as Controlled Access Road), of part of the Pacific Highway between Brunswick Heads and Yelgun

I, the Minister for Roads and Ports, by this order:

1. hereby repeal the parts of the order published in Government Gazette No 82 of 23 June 2006 on page 4718 which:
 - a declared the main road described in Schedules 2 and 3 of that declaration to be controlled access road; and
 - b declared the public road described in Schedules 2 and 3 of that declaration to be main road;
 but only in so far as these parts pertain to the land described in Schedule 1 hereunder; and
2. pursuant to Sections 46, 48, 54 and 67 of the Roads Act, 1993:
 - a. dedicate as public road the land described in Schedules 2, 3 and 4 under;
 - b. declare to be a main road the said public road described in Schedules 3 and 4 and the public road described in Schedules 5 and 6 under;
 - c. declare to be a freeway the said main road described in Schedules 4 and 5 under;
 - d. declare that access to the said freeway is restricted; and
 - e. specify in Schedule 7 under, the points along the freeway at which access may be gained to or from other public roads.

**HON DUNCAN GAY MLC
MINISTER FOR ROADS AND PORTS**

SCHEDULE 1

ALL those pieces or parcels of public road situated in the Byron Shire Council area, Parish of Billinudgel and County of Rous shown as:

Lots 109, 111, 113 and 118 Deposited Plan 1001878;

Lots 1, 2 and 3 Deposited Plan 1062847; and

Lot 122 Deposited Plan 1007659.

[Note: The effect of the repeal in relation to the land in this schedule is that this land remains public road but is no longer controlled access road.]

SCHEDULE 2

ALL those pieces or parcels of land situated in the Byron Shire Council area, Parish of Billinudgel and County of Rous shown as:

Lots 22 to 28 inclusive and Lot 31 Deposited Plan 1134600;

Lot 11 Deposited Plan 1023281;

Lot 5 Deposited Plan 630650;

Lot 11 Deposited Plan 620125;

Lots 5, 11 and 12 Deposited Plan 260279;

Lots 27, 29, 31 and 32 Deposited Plan 1139221;

Lot 101 Deposited Plan 1128096;

Lots 9 and 10 Deposited Plan 1071656;

Lots 30 to 44 inclusive Deposited Plan 1148663;

Lot 11 Deposited Plan 1022804;

Lot 4 Deposited Plan 579411;

Lots 27 to 31 inclusive Deposited Plan 1164347;

Lots 40 to 48 inclusive Deposited Plan 1016168;

Lot 101 Deposited Plan 1044598;

Lots 102 and 103 Deposited Plan 1044613;

Lot 101 Deposited Plan 1044616;

Lot 1520 Deposited Plan 245028;

Lot 1458 Deposited Plan 245029; and

Lots 10 to 13 inclusive Deposited Plan 241965.

The above Lots are shown on RMS Plan 0010 062 AC 4011.

SCHEDULE 3

ALL those pieces or parcels of land situated in the Byron Shire Council area, Parish of Billinudgel and County of Rous shown as:

Lots 17 and 24 Deposited Plan 1139221; and

Lot 20 Deposited Plan 1018251.

The above Lots are shown on RMS Plan 0010 062 AC 4011.

SCHEDULE 4

ALL those pieces or parcels of land situated in the Byron Shire Council area, Parish of Billinudgel and County of Rous shown as:

Lots 10, 11, 12, 14, 15, 16, 18 and 21 Deposited Plan 1134600;

Lot 2 Deposited Plan 1036604;

Lot 1 Deposited Plan 1036605;

Lots 1 and 2 Deposited Plan 260279;

Lots 15, 16, 19, 20, 21 and 22 Deposited Plan 1139221;

Lot 21 Deposited Plan 1018251;

Lot 603 Deposited Plan 240398;

Lot 38 Deposited Plan 850926;

Lot 1 Deposited Plan 40804;

Lots 11, 17, 21, 28 and 29 Deposited Plan 1148663;

Lots 20 to 23 inclusive and Lot 26 Deposited Plan 1164347;

Lots 38 and 39 Deposited Plan 1016168;

Lot 1 Deposited Plan 1004549; and

Lot 3 Deposited Plan 1045607.

The above Lots are shown on RMS Plan 0010 062 AC 4011.

SCHEDULE 5

ALL those pieces or parcels of public road situated in the Byron Shire Council area, Parish of Billinudgel and County of Rous shown as:

Lots 113 and 118 Deposited Plan 1001878;

Lots 3 to 9 inclusive, Lots 13, 17, 19 and 20 Deposited Plan 1134600;

Lot 122 Deposited Plan 1007659;

Lots 23 and 26 Deposited Plan 1139221;

Lot 27 Deposited Plan 1018251;

Lots 12 to 16 inclusive, Lots 18, 19, 20 and Lots 22 to 27 inclusive Deposited Plan 1148663; and

Lots 24 and 25 Deposited Plan 1164347.

The above Lots are shown on RMS Plan 0010 062 AC 4011.

SCHEDULE 6

ALL that piece or parcel of public road situated in the Byron Shire Council area, Parish of Billinudgel and County of Rous shown as Lot 25 Deposited Plan 1139221.

The above Lot is shown on RMS Plan 0010 062 AC 4011.

SCHEDULE 7

Between the points E and F; and

between the points K and L; all shown on RMS Plan 0010 062 AC 4011.

(RMS Papers: 10/62.1111 Pt 6 and SF2012/923)

ROADS ACT 1993

Order – Section 46, 49, 54 and 67

Wagga Wagga City Council area

Dedication of Land as Public Road and Declaration as a Controlled Access Road of part of the Hume Highway at Kyeamba

I, the Minister for Roads, pursuant to Sections 46, 49, 54 and 67 of the Roads Act, 1993, by this order -

1. dedicate as public road the land described in Schedules 1 and 2 under;
2. declare to be a main road the said public road described in Schedule 2 and the public road described in Schedule 3 under;
3. declare to be a controlled access road the said main road described in Schedules 2 and 3;
4. declare that access to the said controlled access road is restricted; and
5. specify in Schedule 4 under, the points along the controlled access road at which access may be gained to or from other public roads.

**HON DUNCAN GAY MLC
MINISTER FOR ROADS AND PORTS**

—————
SCHEDULE 1

ALL those pieces or parcels of land situated in the Wagga Wagga City Council area, Parishes of Kyeamba and Murraguldrrie, and County of Wynyard, shown as:

Lot 12 Deposited Plan 1124528;

Lots 205 to 208 inclusive Deposited Plan 1164522;

Lot 7 Deposited Plan 757238; and

Lots 26 to 29 inclusive Deposited Plan 1128282.

The above Lots are shown in RMS Plan 0002 468 AC 4014.

—————
SCHEDULE 2

ALL those pieces or parcels of land situated in the Wagga Wagga City Council area, Parishes of Kyeamba, Murraguldrrie and Kilgowla, and County of Wynyard, shown as:

Lots 6, 8, 9 and 10 Deposited Plan 1120589;

Lots 8, 9 and 10 Deposited Plan 1124528;

Lots 202 and 204 Deposited Plan 1164522;

Lot 1 Deposited Plan 90231;

Lots 17 to 19 inclusive and Lots 22 to 25 inclusive Deposited Plan 1128282;

Lots 4, 5 and 7 Deposited Plan 1128283; and

Lots 9 and 10 Deposited Plan 829714.

The above Lots are shown in RMS Plan 0002 468 AC 4014.

—————
SCHEDULE 3

ALL those pieces or parcels of public road situated in the Wagga Wagga City Council area, Parishes of Kyeamba, Murraguldrrie and Kilgowla, and County of Wynyard, shown as:

Lots 7, 11, 12 and 13 Deposited Plan 1120589;

Lot 11 Deposited Plan 1124528;

Lot 203 Deposited Plan 1164522;

Lot 16 Deposited Plan 1128282;

Lots 6 and 8 Deposited Plan 1128283;

Lot 101 in RMS Plan 0002 468 AC 4014 being the area of 409.8m² shown on sheet 1 Deposited Plan 829714;

Lot 102 in RMS Plan 0002 468 AC 4014 being the area of 13.47ha shown on sheets 1 and 2 Deposited Plan 829714; and

Lot 103 in RMS Plan 0002 468 AC 4014 being the area of 1729m² shown on sheet 2 Deposited Plan 829714.

The above Lots are shown in RMS Plan 0002 468 AC 4014.

—————
SCHEDULE 4

Between the points A and B;

between the points C and D;

between the points E and F; and

between the points G and H; all shown in RMS Plan 0002 468 AC 4014.

(RMS Papers: 2/468.124)

ROADS ACT 1993**LAND ACQUISITION (JUST TERMS
COMPENSATION) ACT 1991**

Notice of Compulsory Acquisition of Land
at Raleigh in the Bellingen Shire Council area

Roads and Maritime Services by its delegate declares, with the approval of Her Excellency the Governor, that the land described in the schedule below is acquired by compulsory process under the provisions of the Land Acquisition (Just Terms Compensation) Act 1991 for the purposes of the Roads Act 1993.

T D Craig
Manager, Compulsory Acquisition & Road Dedication
Roads and Maritime Services

SCHEDULE

ALL those pieces or parcels of land situated in the Bellingen Shire Council area, Parish of South Bellingen and County of Raleigh shown as Lots 2 to 6 inclusive Deposited Plan 1176070, being parts of the land in Certificates of Title 318/755557, 10/839899, 101/1161740 and 1/170992 respectively, excluding any existing easements from the compulsory acquisition of Lots 2 to 6 inclusive Deposited Plan 1176070.

The land is said to be in the possession of Martin Willis.

(RMS Papers: SF2012/38138 & 11M1073)

Department of Trade and Investment, Regional Infrastructure and Services

MINERAL RESOURCES

NOTICE is given that the following applications have been received:

EXPLORATION LICENCE APPLICATIONS

(11-1144)

No. 4695, NAMOI MINING PTY LTD (ACN 071 158 373), area of 771 hectares, for Group 9, dated 31 October 2012. (Armidale Mining Division).

(T12-1252)

No. 4696, AUZEX EXPLORATION LIMITED (ACN 153 608 596), area of 98 units, for Group 1, dated 31 October 2012. (Inverell Mining Division).

(11-1143)

No. 4697, WHITEHAVEN COAL MINING LIMITED (ACN 086 426 253), area of 1281 hectares, for Group 9, dated 31 October 2012. (Armidale Mining Division).

(T12-1253)

No. 4698, Lincoln McCLATCHIE, area of 14 units, for Group 1, dated 5 November 2012. (Wagga Wagga Mining Division).

(T12-1254)

No. 4699, THOMSON RESOURCES LTD (ACN 138 358 728), area of 60 units, for Group 1, dated 5 November 2012. (Cobar Mining Division).

(T12-1255)

No. 4700, THOMSON RESOURCES LTD (ACN 138 358 728), area of 22 units, for Group 1, dated 6 November 2012. (Orange Mining Division).

(T12-1256)

No. 4701, OCHRE RESOURCES PTY LTD (ACN 112 833 351), area of 9 units, for Group 1, dated 6 November 2012. (Wagga Wagga Mining Division).

MINING LEASE APPLICATIONS

(T12-1514)

No. 441, WHITEHAVEN COAL MINING LIMITED (ACN 086 426 253), area of about 411.1 hectares, to mine for coal, dated 25 September 2012. (Armidale Mining Division).

(T12-1516)

No. 444, ENVIRO-MINING PTY LTD (ACN 081 017 192) and COLMINE CONSULTING PTY LIMITED (ACN 079 857 033), area of about 25.63 hectares, to mine for coal, dated 30 October 2012. (Singleton Mining Division).

The Hon. CHRIS HARTCHER, M.P.,
Minister for Resources and Energy

NOTICE is given that the following applications have been received:

REQUEST FOR CANCELLATION OF AUTHORITIES

(T11-0202)

Exploration Licence No. 7860, PINNACLE GOLD PTY LTD (ACN 151 778 424), Counties of Darling and Nandewar, area of 100 units. Application for cancellation was received on 1 November 2012.

(T11-0370)

Exploration Licence No 7922, DRILLTEST (AUSTRALIA) PTY LTD (ACN 112 156 055), County of Menindee, area of 50 units. Application for cancellation was received on 2 November 2012.

(T11-0372)

Exploration Licence No 7923, DRILLTEST (AUSTRALIA) PTY LTD (ACN 112 156 055), Counties of Yancowinna and Menindee, area of 49 units. Application for cancellation was received on 2 November 2012.

(T11-0371)

Exploration Licence No. 7944, DRILLTEST (AUSTRALIA) PTY LTD (ACN 112 156 055), County of Yancowinna, area of 50 units. Application for cancellation was received on 2 November 2012.

The Hon. CHRIS HARTCHER, M.P.,
Minister for Resources and Energy

NOTICE is given that the following applications have been granted:

EXPLORATION LICENCE APPLICATIONS

(T11-0300)

No. 4385, now Exploration Licence No. 7970, GOLDEN CROSS OPERATIONS PTY LTD (ACN 050 212 827), County of Blaxland, Map Sheet (8133), area of 1 units, for Group 1, dated 4 October 2012, for a term until 4 October 2014.

(T11-0332)

No. 4416, now Exploration Licence No. 7971, ALKANE RESOURCES LTD (ACN 000 689 216), County of Wellington, Map Sheet (8731), area of 18 units, for Group 1, dated 4 October 2012, for a term until 4 October 2015.

(T12-1035)

No. 4491, now Exploration Licence No. 7993, TELLUS RESOURCES LTD (ACN 144 733 595), Counties of Bathurst and Georgiana, Map Sheet (8730), area of 53 units, for Group 1, dated 25 October 2012, for a term until 25 October 2014.

(T12-1048)

No. 4504, now Exploration Licence No. 8005, ELSMORE RESOURCES LIMITED (ACN 145 701 033), Counties of Gough and Hardinge, Map Sheet (9138), area of 16 units, for Group 1 and Group 10, dated 31 October 2012, for a term until 31 October 2014.

(T12-1127)

No. 4580, now Exploration Licence No. 7996, PMR4 PTY LTD (ACN 158 330 404), Counties of Drake, Fitzroy and Gresham, Map Sheet (9338, 9339, 9438, 9439), area of 100 units, for Group 1, dated 29 October 2012, for a term until 29 October 2014.

(T12-1143)

No. 4596, now Exploration Licence No. 7969, EMX EXPLORATION PTY LTD (ACN 139 612 427), Counties of Young and Yungnulgra, Map Sheet (7435), area of 34 units, for Group 1, dated 5 October 2012, for a term until 5 October 2014.

MINING LEASE APPLICATION

(T12-1501)

Sydney No. 419, now Mining Lease No. 1678 (Act 1992), ENDEAVOUR COAL PTY LIMITED (ACN 099 830 476), Parish of Camden, County of Camden and Parish of Appin, County of Cumberland, Map Sheet (9029-1-S, 9029-4-S), area of 40.2 hectares, to mine for coal, dated 27 September 2012, for a term until 27 September 2033. As a result of the grant of this title, Authorisation No. 396 and Authorisation No. 397 have partly ceased to have effect.

The Hon. CHRIS HARTCHER, M.P.,
Minister for Resources and Energy

NOTICE is given that the following applications have been refused:

EXPLORATION LICENCE APPLICATIONS

(T11-0334)

No. 4418, AUSTRALITH PTY LIMITED (ACN 145 901 515), County of Farnell and County of Mootwingee, Map Sheet (7235). Refusal took effect on 31 October 2012.

(T11-0367)

No. 4444, JUBA MINERALS PTY LIMITED, County of Murchison, Map Sheet (8937). Refusal took effect on 31 October 2012.

(T12-1012)

No. 4469, AUSTRALIAN DIAMOND CORPORATION PTY LTD (ACN 115 211 984), County of Yungnulgra, Map Sheet (7436). Refusal took effect on 31 October 2012.

(T12-1014)

No. 4471, AUSTRALIAN DIAMOND CORPORATION PTY LTD (ACN 115 211 984), County of Mootwingee and County of Yungnulgra, Map Sheet (7336). Refusal took effect on 31 October 2012.

The Hon. CHRIS HARTCHER, M.P.,
Minister for Resources and Energy

NOTICE is given that the following applications have been withdrawn:

ASSESSMENT LEASE APPLICATION

(T12-1502)

No. 47, RENISON CONSOLIDATED MINES NL (ACN 003 049 714) and NORTHERN ENERGY CORPORATION LIMITED (ACN 081 244 395), Parish of Ashby, County of Arrawatta; Parish of McDonald, County of Arrawatta and Parish of Myall, County of Arrawatta. Withdrawal took effect on 29 October 2012.

EXPLORATION LICENCE APPLICATION

(T12-1153)

No. 4603, Donald John PERKIN and MINEXCHANGE PROPRIETARY LIMITED (ACN 086 042 524), County of Roxburgh, Map Sheet (8831). Withdrawal took effect on 30 October 2012.

The Hon. CHRIS HARTCHER, M.P.,
Minister for Resources and Energy

NOTICE is given that the following applications for renewal have been received:

(10-7539)

Exploration Licence No. 2513, PERILYA BROKEN HILL LIMITED (ACN 099 761 289), area of 27 units. Application for renewal received 6 November 2012.

(06-6587)

Exploration Licence No. 2743, PERILYA BROKEN HILL LIMITED (ACN 099 761 289), area of 36 units. Application for renewal received 6 November 2012.

(06-4093)

Exploration Licence No. 6658, NEW SOUTH RESOURCES LIMITED (ACN 119 557 416), area of 4 units. Application for renewal received 1 November 2012.

(06-0217)

Exploration Licence No. 6661, CLANCY EXPLORATION LIMITED (ACN 105 578 756), area of 49 units. Application for renewal received 6 November 2012.

(06-0218)

Exploration Licence No. 6662, GOLD FIELDS AUSTRALASIA PTY LTD (ACN 087 624 600) and CLANCY EXPLORATION LIMITED (ACN 105 578 756), area of 15 units. Application for renewal received 5 November 2012.

(T08-0093)

Exploration Licence No. 7233, RIMFIRE PACIFIC MINING NL (ACN 006 911 744), area of 4 units. Application for renewal received 31 October 2012.

(T08-0096)

Exploration Licence No. 7234, RIMFIRE PACIFIC MINING NL (ACN 006 911 744), area of 4 units. Application for renewal received 31 October 2012.

(T08-0086)

Exploration Licence No. 7235, ALKANE RESOURCES LTD (ACN 000 689 216), area of 5 units. Application for renewal received 5 November 2012.

(T97-1000)

Mining Claim converted to Lease No. 293 (Act 1992), Riley WARD, area of 2 hectares. Application for renewal received 17 October 2012.

(12-5282)

Mining Lease No. 1301 (Act 1992), IVANHOE COAL PTY LIMITED (ACN 064 237 154), area of 5.131 hectares. Application for renewal received 29 October 2012.

The Hon. CHRIS HARTCHER, M.P.,
Minister for Resources and Energy

RENEWAL OF CERTAIN AUTHORITIES

NOTICE is given that the following authorities have been renewed:

(08-2671)

Exploration Licence No. 4962, TRITTON RESOURCES PTY LTD (ACN 100 095 494), County of Canbelego, Map Sheet (8234, 8235), area of 123 units, for a further term until 25 April 2014. Renewal effective on and from 1 November 2012.

(12-2830)

Exploration Licence No. 6127, PEAK GOLD MINES PTY LTD (ACN 001 533 777) and LYDAIL PTY LTD (ACN 076 772 275), Counties of Mouramba and Robinson, Map Sheet (8034, 8133, 8134), area of 98 units, for a further term until 23 September 2014. Renewal effective on and from 1 November 2012.

(12-1253)

Exploration Licence No. 6209, SOMERSET MINERALS PTY LTD (ACN 142 148 418), County of Lincoln, Map Sheet (8733), area of 3 units, for a further term until 11 March 2014. Renewal effective on and from 30 October 2012.

(11-6503)

Exploration Licence No. 6511, ORPHEUS ENERGY (ASHFORD) PTY LTD (ACN 152 564 933), County of Arrawatta, Map Sheet (9039), area of 4 units, for a further term until 2 March 2014. Renewal effective on and from 1 November 2012.

(07-0334)

Exploration Licence No. 6952, EASTERN IRON LIMITED (ACN 126 678 037), County of Cunningham, Map Sheet (8231, 8232), area of 69 units, for a further term until 30 November 2013. Renewal effective on and from 30 October 2012.

(07-0335)

Exploration Licence No. 6953, EASTERN IRON LIMITED (ACN 126 678 037), Counties of Cowper, Robinson and Yanda, Map Sheet (8035, 8135), area of 64 units, for a further term until 30 November 2013. Renewal effective on and from 30 October 2012.

(07-0336)

Exploration Licence No. 6954, PLATSEARCH NL (ACN 003 254 395) and EASTERN IRON LIMITED (ACN 126 678 037), Counties of Canbelego and Cowper, Map Sheet (8135, 8235), area of 100 units, for a further term until 30 November 2013. Renewal effective on and from 30 October 2012.

(07-0337)

Exploration Licence No. 6956, PLATSEARCH NL (ACN 003 254 395) and EASTERN IRON LIMITED (ACN 126 678 037), County of Cowper, Map Sheet (8136, 8236), area of 76 units, for a further term until 30 November 2013. Renewal effective on and from 30 October 2012.

(07-0338)

Exploration Licence No. 6957, EASTERN IRON LIMITED (ACN 126 678 037), County of Robinson, Map Sheet (7935, 8035), area of 73 units, for a further term until 30 November 2013. Renewal effective on and from 30 October 2012.

(07-0339)

Exploration Licence No. 6958, EASTERN IRON LIMITED (ACN 126 678 037), County of Robinson, Map Sheet (8034), area of 65 units, for a further term until 30 November 2013. Renewal effective on and from 30 October 2012.

(07-0340)

Exploration Licence No. 6959, EASTERN IRON LIMITED (ACN 126 678 037), Counties of Mouramba and Robinson, Map Sheet (8034, 8134), area of 48 units, for a further term until 30 November 2013. Renewal effective on and from 30 October 2012.

(07-0341)

Exploration Licence No. 6960, EASTERN IRON LIMITED (ACN 126 678 037), County of Mouramba, Map Sheet (8033, 8034, 8133, 8134), area of 71 units, for a further term until 30 November 2013. Renewal effective on and from 30 October 2012.

(07-0342)

Exploration Licence No. 6961, EASTERN IRON LIMITED (ACN 126 678 037), County of Blaxland, Map Sheet (8031, 8032), area of 89 units, for a further term until 30 November 2013. Renewal effective on and from 30 October 2012.

(07-0343)

Exploration Licence No. 6962, EASTERN IRON LIMITED (ACN 126 678 037), Counties of Blaxland and Cunningham, Map Sheet (8131, 8132, 8231, 8232), area of 52 units, for a further term until 30 November 2013. Renewal effective on and from 30 October 2012.

(T08-0039)

Exploration Licence No. 7128, ALLIANCE (NSW) PTY LTD (ACN 096 947 223), County of Yancowinna, Map Sheet (7134), area of 8 units, for a further term until 21 April 2014. Renewal effective on and from 27 September 2012.

(T09-0182)

Exploration Licence No. 7450, ILUKA RESOURCES LIMITED (ACN 008 675 018), Counties of Caira, Kilfera and Taila, Map Sheet (7528, 7529, 7530, 7628, 7629, 7630), area of 569 units, for a further term until 8 February 2014. Renewal effective on and from 2 November 2012.

The Hon. CHRIS HARTCHER, M.P.,
Minister for Resources and Energy

WITHDRAWAL OF APPLICATION FOR RENEWAL

NOTICE is given that the application for renewal in respect of the following authority has been withdrawn:

(T09-0288)

Exploration Licence No. 7555, NEWMONT EXPLORATION PTY LTD (ACN 006 306 690), County of Georgiana, Map Sheet (8829, 8830), area of 14 units. The authority ceased to have effect on 18 October 2012.

The Hon. CHRIS HARTCHER, M.P.,
Minister for Resources and Energy

LANDS

ARMIDALE CROWN LANDS OFFICE
108 Faulkner Street (PO Box 199A), Armidale NSW 2350
Phone: (02) 6770 3100 Fax (02) 6771 5348

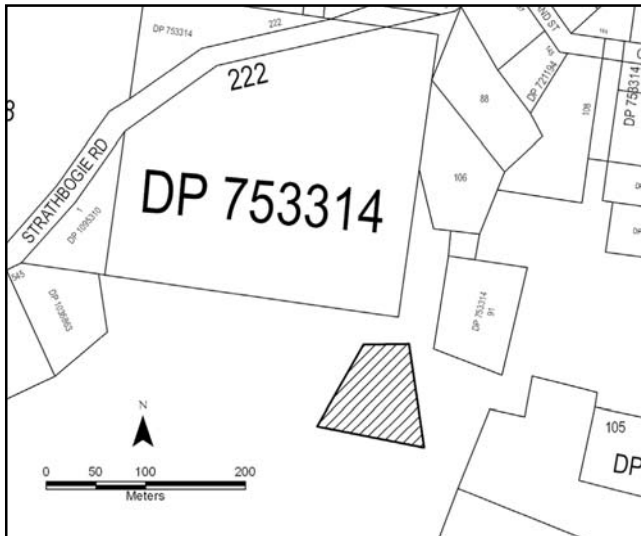
REVOCATION OF RESERVATION OF CROWN LAND

PURSUANT to section 90 of the Crown Lands Act 1989, the reservation of Crown land specified in Column 1 of the Schedule hereunder is revoked to the extent specified opposite thereto in Column 2 of the Schedule.

ANDREW STONER, M.P.,
Minister for Regional Infrastructure and Services

SCHEDULE

<i>Column 1</i>	<i>Column 2</i>
Land District: Glen Innes	Lot PT 7016, DP 1112964,
Local Government Area: Glen Innes Severn Shire	Parish Strathbogie North County Gough
Locality: Emmaville	An area of approximately
Reserve No. 753314	7875m ² as defined by black
Public Purpose: Future public requirements	hatching in the diagram
Notified: 29 June 2007	below.
File Reference: AE06H159	



Notes: Following part revocation of the reserve identified in Column 1, it is intended to sell the parcel of Crown land identified in Column 2 by private treaty sale.

GOULBURN OFFICE
159 Auburn Street (PO Box 748), Goulburn NSW 2580
Phone: (02) 4824 3700 Fax: (02) 4822 4287

NOTIFICATION OF CLOSING OF A ROAD

IN pursuance of the provisions of the Roads Act 1993, the road hereunder described is closed and the land comprised therein ceases to be public road and the rights of passage and access that previously existed in relation to the road are extinguished. Upon closing, title to the land comprising the former public road, vests in the body specified hereunder.

ANDREW STONER, M.P.,
Minister for Regional Infrastructure and Services

Description

*Parish – Manton; County – King;
Land District – Yass; L.G.A. – Yass Valley Council*

Lots 9, 10, 11, 12 and 13, DP 1152324 (not being land under the Real Property Act).

File No.: 10/14990.LB.

Note: On closing, the title for the land in Lots 9, 10, 11, 12 and 13, DP 1152324 remains vested in Yass Valley Council as operational land.

In accordance with section 44 of the Roads Act 1993, the Crown consents to the land in Lots 9, 10, 11, 12 and 13, DP 1152324 being vested in the Yass Valley Council as operational land, to be given by the Council as compensation for other land acquired by the Council for the purpose of the Roads Act.

Description

*Parish – Kangaloon; County – Camden;
Land District – Moss Vale;
L.G.A. – Wingecarribee Shire Council*

Lot 1, DP 1174759 (not being land under the Real Property Act).

File No.: 09/09820.LB.

Note: On closing, the title for the land in Lot 1, DP 1171759 remains vested in Wingecarribee Shire Council as operational land.

In accordance with section 43 of the Roads Act 1993, the Crown consents to the land in Lot 1, DP 1174759 being vested in the Wingecarribee Shire Council as operational land, to be sold by Council.

GRAFTON OFFICE
49-51 Victoria Street (PO Box 272), Grafton NSW 2460
Phone: (02) 6640 3400 Fax: (02) 6642 5375

NOTIFICATION OF CLOSING OF A ROAD

IN pursuance of the provisions of the Roads Act 1993, the road hereunder described is closed and the lands comprised therein cease to be public road and the rights of passage and access that previously existed in relation to the road is extinguished. Upon closing, title to the land, comprising the former public road, vests in the body specified in the Schedule hereunder.

ANDREW STONER, M.P.,
 Minister for Regional Infrastructure and Services

Description

Parish – Tyndale; County – Clarence;
Land District – Grafton; L.G.A. – Clarence Valley

Road Closed: Lot 1, DP 1176287.
 File No.: 07/4424.

Schedule

On closing, the land within Lot 1, DP 1176287 remains vested in the State of New South Wales as Crown Land.

NOTIFICATION OF CLOSING OF A ROAD

IN pursuance of the provisions of the Roads Act 1993, the road hereunder described is closed and the lands comprised therein cease to be public road and the rights of passage and access that previously existed in relation to the road is extinguished. Upon closing, title to the land, comprising the former public road, vests in the body specified in the Schedule hereunder.

ANDREW STONER, M.P.,
 Minister for Regional Infrastructure and Services

Description

Parish – Gooninbar; County – Rous
Land District – Murwillumbah; LGA – Tweed

Road Closed: Lot 8, DP 1159378.
 File No.: 08/11182

Schedule

On closing, the land within Lot 8, DP 1159378 remains vested in the State of New South Wales as Crown land.

APPOINTMENT OF TRUST BOARD MEMBERS

PURSUANT to section 93 of the Crown Lands Act 1989, the persons whose names are specified in Column 1 of the Schedule hereunder, are appointed for the terms of office specified, as members of the trust board for the reserve trust specified opposite thereto in Column 2, which has been established and appointed as trustee of the reserve referred to opposite thereto in Column 3 of the Schedule.

ANDREW STONER, M.P.,
 Minister for Regional Infrastructure and Services

SCHEDULE

<i>Column 1</i>	<i>Column 2</i>	<i>Column 3</i>
Paul Ashton ANDERSON (new member). James Wilfred MURRAY (new member).	Kyogle Showground and Public Recreation Trust.	Dedication No.: 540086. Public Purpose: Public recreation and showground. Notified: 24 November 1972. File No.: 09/15552.

Term of Office

For a term commencing the date of this notice and expiring 28 October 2014.

GRIFFITH OFFICE
2nd Floor, Griffith City Plaza,
120–130 Banna Avenue (PO Box 1030), Griffith NSW 2680
Phone: (02) 6960 3600 Fax: (02) 6962 5670

ROADS ACT 1993

ORDER

Transfer of a Crown Road to a Council

IN pursuance of the provisions of section 151, Roads Act 1993, the Crown public roads specified in Schedule 1 are transferred to the Roads Authority specified in Schedule 2 hereunder, as from the date of publication of this notice and as from that date, the roads specified in Schedule 1 cease to be Crown public roads.

ANDREW STONER, M.P.,
Minister for Regional Infrastructure and Services

SCHEDULE 1

Crown road being part Bankdale Road (eastern section approximately 1.26 kilometres from Kywong Boree Creek Road), adjoining Lot 60, DP 1079565; Lot 2, DP 802754 and about 220 metres from common boundary of Lots 1 and 2, DP 802754, Parish of Mimosa, County of Mitchell.

SCHEDULE 2

Roads Authority: Narrandera Shire Council.

File No.: 10/15479.

Council Reference: MPH/cjt/R/0023 and CR10-1709.

MAITLAND OFFICE**Corner Newcastle Road and Banks Street (PO Box 6), East Maitland NSW 2323****Phone: (02) 4937 9300 Fax: (02) 4934 2252****ESTABLISHMENT OF RESERVE TRUST**

PURSUANT to section 92(1) of the Crown Lands Act 1989, the reserve trust specified in Column 1 of the Schedule hereunder, is established under the name stated in that Column and is appointed as trustee of the reserve specified opposite thereto in Column 2 of the Schedule.

ANDREW STONER, M.P.,
Minister for Regional Infrastructure and Services

SCHEDULE

<i>Column 1</i>	<i>Column 2</i>
Uratta Street (R88338) Recreation Reserve Trust.	Reserve No.: 88338. Public Purpose: Public recreation. Notified: 20 August 1971. File No.: 11/10987.

APPOINTMENT OF CORPORATION TO MANAGE RESERVE TRUST

PURSUANT to section 95 of the Crown Lands Act 1989, the corporation specified in Column 1 of the Schedule hereunder, is appointed to manage the affairs of the reserve trust specified opposite thereto in Column 2, which is trustee of the reserve referred to in Column 3 of the Schedule.

ANDREW STONER, M.P.,
Minister for Regional Infrastructure and Services

SCHEDULE

<i>Column 1</i>	<i>Column 2</i>	<i>Column 3</i>
Gosford City Council.	Uratta Street (R88338) Recreation Reserve Trust.	Reserve No.: 88338. Public Purpose: Public recreation. Notified: 20 August 1971. File No.: 11/10987.

For a term commencing the date of this notice.

MOREE OFFICE**Frome Street (PO Box 388), Moree NSW 2400****Phone: (02) 6752 5055 Fax: (02) 6752 1707****NOTIFICATION OF CLOSING OF A ROAD**

IN pursuance of the provisions of the Roads Act 1993, the road hereunder described is closed and the lands comprised therein cease to be public road and the rights of passage and access that previously existed in relation to the road is extinguished. Upon closing, title to the land, comprising the former public road, vests in the body specified in the Schedule hereunder.

ANDREW STONER, M.P.,
Minister for Regional Infrastructure and Services

Description

*Parish – Macintyre; County – Murchison
Land District – Bingara; LGA – Gwydir*

Road Closed: Lots 1-2, DP 1176260.

File No.: ME06H129

Schedule

On closing, the land within Lots 1-2, DP 1176260 remains vested in the State of New South Wales as Crown land.

NOTIFICATION OF CLOSING OF A ROAD

IN pursuance of the provisions of the Roads Act 1993, the road hereunder described is closed and the lands comprised therein cease to be public road and the rights of passage and access that previously existed in relation to the road is extinguished. Upon closing, title to the land, comprising the former public road, vests in the body specified in the Schedule hereunder.

ANDREW STONER, M.P.,
Minister for Regional Infrastructure and Services

Description

*Parish – Gurley; County – Courallie
Land District – Moree; LGA – Moree Plains*

Road Closed: Lot 1, DP 1176255.

File No.: ME05H387

Schedule

On closing, the land within Lot 1, DP 1176255 remains vested in the State of New South Wales as Crown land.

NEWCASTLE OFFICE

437 Hunter Street, Newcastle NSW 2300 (PO Box 2185, Dangar NSW 2309)

Phone: (02) 4925 4104 Fax: (02) 4925 3517

NOTIFICATION OF CLOSING OF A ROAD

IN pursuance of the provisions of the Roads Act 1993, the road hereunder described is closed and the lands comprised therein cease to be public road and the rights of passage and access that previously existed in relation to the road is extinguished. Upon closing, title to the land, comprising the former public road, vests in the body specified in the Schedule hereunder.

ANDREW STONER, M.P.,
Minister for Regional Infrastructure and Services

Description

*Parish – Purfleet; County – Bathurst;
Land District – Blayney; L.G.A. – Cowra*

Road Closed: Lot 1, DP 1178109.
File No.: CL/00742.

Schedule

On closing, the land within Lot 1, DP 1178109 remains vested in the State of New South Wales as Crown land.

Description

*Parishes – Gungewalla and Murringo;
County – Monteagle; Land District – Young;
L.G.A. – Young*

Road Closed: Lot 1, DP 1178971.
File No.: 07/3722.

Schedule

On closing, the land within Lot 1, DP 1178971 remains vested in the State of New South Wales as Crown land.

Description

*Parish – Gungewalla; County – Monteagle;
Land District – Young; L.G.A. – Young*

Road Closed: Lot 3, DP 1178971.
File No.: 07/3283.

Schedule

On closing, the land within Lot 3, DP 1178971 remains vested in the State of New South Wales as Crown land.

Description

*Parish – Dulabree; County – Roxburgh;
Land District – Bathurst; L.G.A. – Lithgow*

Road Closed: Lot 1, DP 1179808.
File No.: 08/6524.

Schedule

On closing, the land within Lot 1, DP 1179808 remains vested in the State of New South Wales as Crown land.

Description

*Parish – Errol; County – Bathurst;
Land District – Blayney; L.G.A. – Blayney*

Road Closed: Lot 1, DP 1179135.
File No.: CL/00535.

Schedule

On closing, the land within Lot 1, DP 1179135 remains vested in the State of New South Wales as Crown land.

Description

*Parish – Beneree; County – Bathurst;
Land District – Orange; L.G.A. – Orange*

Road Closed: Lot 1, DP 1179007.
File No.: CL/00879.

Schedule

On closing, the land within Lot 1, DP 1179007 remains vested in the State of New South Wales as Crown land.

Description

*Parish – Shadforth; County – Bathurst;
Land District – Orange; L.G.A. – Orange*

Road Closed: Lots 1 and 2, DP 1178970.
File Nos: CL/00757 and CL/00184.

Schedule

On closing, the land within Lots 1 and 2, DP 1178970 remains vested in the State of New South Wales as Crown land.

Description

*Parish – Carwoola; County – Murray;
Land District – Queanbeyan; L.G.A. – Palerang*

Road Closed: Lot 1, DP 1177763.
File No.: GB06 H 139:BA.

Schedule

On closing, the land within Lot 1, DP 1177763 remains vested in the State of New South Wales as Crown land.

Description

*Parish – Manton; County – King;
Land District – Yass; L.G.A. – Yass Valley*

Road Closed: Lot 1, DP 1179847 (subject to a right of carriageway created by Deposited Plan 1179847).
File No.: GB07 H 50:BA.

Schedule

On closing, the land within Lot 1, DP 1179847 remains vested in the State of New South Wales as Crown land.

Description

*Parishes – Winduella and Jerrara; County – King;
Land District – Crookwell; L.G.A. – Upper Lachlan Shire*

Road Closed: Lot 1, DP 1177272 (subject to a right of carriageway created by Deposited Plan 1177272).

File No.: GB06 H 543:BA.

Schedule

On closing, the land within Lot 1, DP 1177272 remains vested in the State of New South Wales as Crown land.

Description

*Parish – Clyde; County – Wallace;
Land District – Cooma; L.G.A. – Snowy River*

Road Closed: Lot 1, DP 1178438.

File No.: GB06 H 10:BA.

Schedule

On closing, the land within Lot 1, DP 1178438 remains vested in the State of New South Wales as Crown land.

Description

*Parish – Jellore; County – Camden;
Land District – Moss Vale; L.G.A. – Wingecarribee*

Road Closed: Lot 1, DP 1176632.

File No.: GB07 H 397:BA.

Schedule

On closing, the land within Lot 1, DP 1176632 remains vested in the State of New South Wales as Crown land.

Description

*Parish – Yarralaw; County – Argyle;
Land District – Goulburn; L.G.A. – Goulburn Mulwaree*

Road Closed: Lots 1-3, DP 1176114.

File No.: 07/6154:BA.

Schedule

On closing, the land within Lots 1-3, DP 1176114 remains vested in the State of New South Wales as Crown land.

REVOCATION OF RESERVATION OF CROWN LAND

PURSUANT to section 90 of the Crown Lands Act 1989, the reservation of Crown land specified in Column 1 of the Schedule hereunder, is revoked to the extent specified opposite thereto in Column 2 of the Schedule.

ANDREW STONER, M.P.,
Minister for Regional Infrastructure and Services

SCHEDULE

*Parish – Yarralaw; County – Argyle;
Land District – Goulburn;
Local Government Area – Goulburn Mulwaree*

Column 1

Locality: Windellama.

Reserve No.: 750059.

Public Purpose: Future
public requirements.

Notified: 29 June 2007.

File No.: 07/6154:BA.

Column 2

The part being Lot 4,
DP 1176614 of an area of
5026 square metres.

Note: For the purpose of sale of Lot 4, DP 1176114, closed Crown road (notified in *New South Wales Government Gazette* dated 22 October 1904, to an adjoining owner.

NOWRA OFFICE
5 O’Keefe Avenue (PO Box 309), Nowra NSW 2541
Phone: (02) 4428 9100 Fax: (02) 4421 2172

APPOINTMENT OF TRUST BOARD MEMBERS

PURSUANT to section 93 of the Crown Lands Act 1989, the persons whose names are specified in Column 1 of the Schedule hereunder, are appointed for the terms of office specified, as members of the trust board for the reserve trust specified opposite thereto in Column 2, which has been established and appointed as trustee of the reserve referred to opposite thereto in Column 3 of the Schedule.

ANDREW STONER, M.P.,
 Minister for Regional Infrastructure and Services

SCHEDULE

<i>Column 1</i>	<i>Column 2</i>	<i>Column 3</i>
Trevor Ronald BALL (new member). Sheila Suttie YOUNG (re-appointment). Joan Marion GOOD (re-appointment). Gordon William THOMSON (re-appointment). Phillip John SCOTT (re-appointment). Bruno HENKE (re-appointment). Elaine APPERLEY (re-appointment).	Kangaroo Valley Pioneer Settlement Reserve Trust.	Reserve No.: 88460. Public Purpose: Public recreation and museum. Notified: 7 January 1972. File No.: NA79 R 115.

Term of Office

For a term commencing 23 November 2012 and expiring
 30 November 2014.

NOTIFICATION OF CLOSING OF A ROAD

IN pursuance of the provisions of the Roads Act 1993, the road hereunder described is closed and the lands comprised therein cease to be public road and the rights of passage and access that previously existed in relation to the road is extinguished. Upon closing, title to the land, comprising the former public road, vests in the body specified in the Schedule hereunder.

ANDREW STONER, M.P.,
 Minister for Regional Infrastructure and Services

Description

Parish – Bobundara; County – Wallace;
Land District – Cooma; L.G.A. – Snowy River
 Road Closed: Lot 2, DP 1177971.
 File No.: 12/02293.

Schedule

On closing, the land within Lot 2, DP 1177971 remains
 vested in the State of New South Wales as Crown land.

SYDNEY METROPOLITAN OFFICE
Level 12, Macquarie Tower, 10 Valentine Avenue, Parramatta 2150
(PO Box 3935, Parramatta NSW 2124)
Phone: (02) 8836 5300 Fax: (02) 8836 5365

NOTIFICATION OF CLOSING OF A ROAD

IN pursuance of the provisions of the Roads Act 1993, the road hereunder described is closed and the lands comprised therein cease to be public road and the rights of passage and access that previously existed in relation to the road is extinguished. Upon closing, title to the land, comprising the former public road, vests in the body specified in the Schedule hereunder.

ANDREW STONER, M.P.,
 Minister for Regional Infrastructure and Services

Description

*Parish – Guineacoor; County – Argyle;
 Land District – Goulburn; L.G.A. – Upper Lachlan Shire*

Road Closed: Lot 1, DP 1173795 subject to easement for transmission line created by Deposited Plan 1173795.

File No.: GB07 H 49.

Schedule

On closing, the land within Lot 1, DP 1173795 remains vested in the State of New South Wales as Crown Land.

Description

*Parish – Graham; County – King;
 Land District – Boorowa; L.G.A. – Boorowa*

Road Closed: Lot 1, DP 1168606.

File No.: 09/17756.

Schedule

On closing, the land within Lot 1, DP 1168606 remains vested in the State of New South Wales as Crown Land.

Description

*Parish – Bathurst; County – Bathurst;
 Land District – Bathurst; L.G.A. – Bathurst Regional*

Road Closed: Lot 1, DP 1177213 subject to easement for services created by Deposited Plan 1177213.

File No.: CL/00342.

Schedule

On closing, the land within Lot 1, DP 1177213 remains vested in the State of New South Wales as Crown Land.

ROADS ACT 1993

ORDER

Transfer of a Crown Road to Council

IN pursuance of the provisions of Section 151, Roads Act 1993, the Crown roads specified in Schedule 1 are transferred to the Roads Authority specified in Schedule 2 hereunder, as from the date of publication of this notice and as from that date the roads specified in Schedule 1 cease to be Crown roads.

ANDREW STONER, M.P.,
 Minister for Regional Infrastructure and Services

SCHEDULE 1

*Land District – Metropolitan;
 Local Government Area – Warringah;
 Parish – Broken Bay; County – Cumberland;*

The whole of the Crown Public Road known as Bulara Street, Duffys Forest, as shown by solid black shading on the diagram hereunder.



SCHEDULE 2

Roads Authority: Warringah
 File No.: 10/15111
 Council's Reference: 2011/029371

SCHEDULE 1

*Land District – Metropolitan;
 Local Government Area – Warringah;
 Parish – Broken Bay; County – Cumberland;*

The part of the Crown Public Road known as Mallowa Road, Duffys Forest, as shown by solid black shading on the diagram hereunder.



SCHEDULE 2

Roads Authority: Warringah
 File No.: 10/15111
 Council's Reference: 2011/029371

SCHEDULE 1

Land District – Metropolitan;
Local Government Area – Warringah;
Parish – Broken Bay; County – Cumberland;

The whole of the Crown Public Road known as Eurabba Road, Duffys Forest as shown by solid black shading on the diagram hereunder.



SCHEDULE 2

Roads Authority: Warringah
File No.: 10/15111
Council's Reference: 2011/029371

SCHEDULE 1

Land District – Metropolitan;
Local Government Area – Warringah;
Parish – Broken Bay; County – Cumberland;

The part of the Crown Public Road known as Birramal Road, Duffys Forest as shown by solid black shading on the diagram hereunder.



SCHEDULE 2

Roads Authority: Warringah
File No.: 10/15111
Council's Reference: 2011/029371

SCHEDULE 1

Land District – Metropolitan;
Local Government Area – Warringah;
Parish – Broken Bay; County – Cumberland;

The part of the Crown Public Road known as Thuddungra Road, Duffys Forest as shown by solid black shading on the diagram hereunder.



SCHEDULE 2

Roads Authority: Warringah
File No.: 10/15111
Council's Reference: 2011/029371

SCHEDULE 1

Land District – Metropolitan;
Local Government Area – Warringah;
Parish – Broken Bay; County – Cumberland;

The part of the Crown Public Road known as Killawarra Road, Duffys Forest as shown by solid black shading on the diagram hereunder.



SCHEDULE 2

Roads Authority: Warringah
File No.: 10/15111
Council's Reference: 2011/029371

SCHEDULE 1

Land District – Metropolitan;
Local Government Area – Warringah;
Parish – Broken Bay; County – Cumberland;

The part of the Crown Public Road known as Weemala Road, Duffys Forest as shown by solid black shading on the diagram hereunder.



SCHEDULE 2

Roads Authority: Warringah
File No.: 10/15111
Council's Reference: 2011/029371

SCHEDULE 1

Land District – Metropolitan;
Local Government Area – Warringah;
Parish – Broken Bay; County – Cumberland;

The part of the Crown Public Road known as Kulgoa Crescent, Terrey Hills as shown by solid black shading on the diagram hereunder.



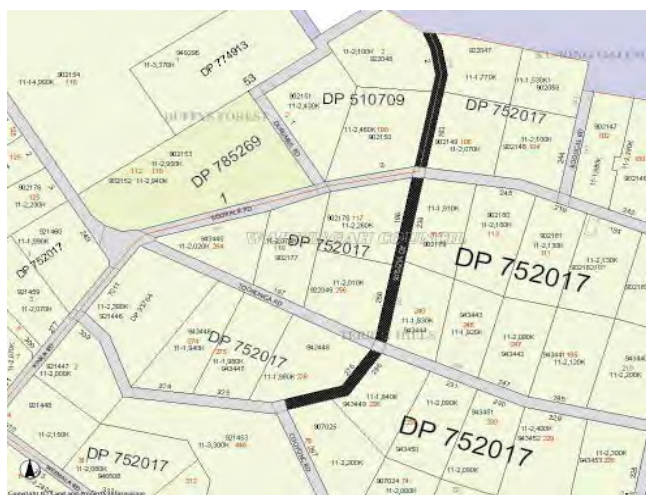
SCHEDULE 2

Roads Authority: Warringah
File No.: 10/15111
Council's Reference: 2011/029371

SCHEDULE 1

Land District – Metropolitan;
Local Government Area – Warringah;
Parish – Broken Bay; County – Cumberland;

The whole of the Crown Public Road known as Booligal Road, Terrey Hills as shown by solid black shading on the diagram hereunder.



SCHEDULE 2

Roads Authority: Warringah
File No.: 10/15111
Council's Reference: 2011/029371

SCHEDULE 1

Land District – Metropolitan;
Local Government Area – Warringah;
Parish – Broken Bay; County – Cumberland;

The part of the Crown Public Road known as Cooyong Road, Terrey Hills as shown by solid black shading on the diagram hereunder.



SCHEDULE 2

Roads Authority: Warringah
File No.: 10/15111
Council's Reference: 2011/029371

SCHEDULE 1

Land District – Metropolitan;
Local Government Area – Warringah;
Parish – Broken Bay; County – Cumberland;

The part of the Crown Public Road known as Coonawarra Road, Terrey Hills as shown by solid black shading on the diagram hereunder.



SCHEDULE 2

Roads Authority: Warringah
File No.: 10/15111
Council’s Reference: 2011/029371

SCHEDULE 1

Land District – Metropolitan;
Local Government Area – Warringah;
Parish – Broken Bay; County – Cumberland;

The part of the Crown Public Road known as Kallaroo Road, Terrey Hills as shown by solid black shading on the diagram hereunder.



SCHEDULE 2

Roads Authority: Warringah
File No.: 10/15111
Council’s Reference: 2011/029371

SCHEDULE 1

Land District – Metropolitan;
Local Government Area – Warringah;
Parish – Broken Bay; County – Cumberland;

The part of the Crown Public Roads known as Aumuna and Coolowie Roads, Terrey Hills as shown by solid black shading on the diagram hereunder.



SCHEDULE 2

Roads Authority: Warringah
File No.: 10/15111
Council’s Reference: 2011/029371

SCHEDULE 1

Land District – Metropolitan;
Local Government Area – Warringah;
Parish – Broken Bay; County – Cumberland;

The part of the Crown Public Road known as Larool Road, Terrey Hills as shown by solid black shading on the diagram hereunder.



SCHEDULE 2

Roads Authority: Warringah
File No.: 10/15111
Council’s Reference: 2011/029371

SCHEDULE 1

Land District – Metropolitan;
Local Government Area – Warringah;
Parish – Broken Bay; County – Cumberland;

The part of the Crown Public Road known as Kanangra Road, Terrey Hills as shown by solid black shading on the diagram hereunder.



SCHEDULE 2

Roads Authority: Warringah
File No.: 10/15111
Council’s Reference: 2011/029371

SCHEDULE 1

Land District – Metropolitan;
Local Government Area – Warringah;
Parish – Broken Bay; County – Cumberland;

The part of the Crown Public Road known as Kinka Road, Duffys Forest as shown by solid black shading on the diagram hereunder.



SCHEDULE 2

Roads Authority: Warringah
File No.: 10/15111
Council’s Reference: 2011/029371

SCHEDULE 1

Land District – Metropolitan;
Local Government Area – Warringah;
Parish – Broken Bay; County – Cumberland;

The formed part of the Crown Public Road known as Tooronga Road, Terrey Hills from Kallaroo Road to the eastern end of the road approximately 200 metres as shown by solid black shading on the diagram hereunder.



SCHEDULE 2

Roads Authority: Warringah
File No.: 10/15111
Council’s Reference: 2011/029371

SCHEDULE 1

Land District – Metropolitan;
Local Government Area – Warringah;
Parish – Broken Bay; County – Cumberland;

The part of the Crown Public Road known as Joalash Road, Duffys Forest as shown by solid black shading on the diagram hereunder.



SCHEDULE 2

Roads Authority: Warringah
File No.: 10/15111
Council’s Reference: 2011/029371

SCHEDULE 1

Land District – Metropolitan;
Local Government Area – Warringah;
Parish – Broken Bay; County – Cumberland;

The whole of the Crown Public Roads known as Coreen Avenue, Garrett Avenue and Milsted Road, Terrey Hills as shown by solid black shading on the diagram hereunder.



SCHEDULE 2

Roads Authority: Warringah
File No.: 10/15111
Council’s Reference: 2011/029371

SCHEDULE 1

Land District – Metropolitan;
Local Government Area – Warringah;
Parish – Broken Bay; County – Cumberland;

The part of the Crown Public Road known as Naroo Road, Terrey Hills as shown by solid black shading on the diagram hereunder.



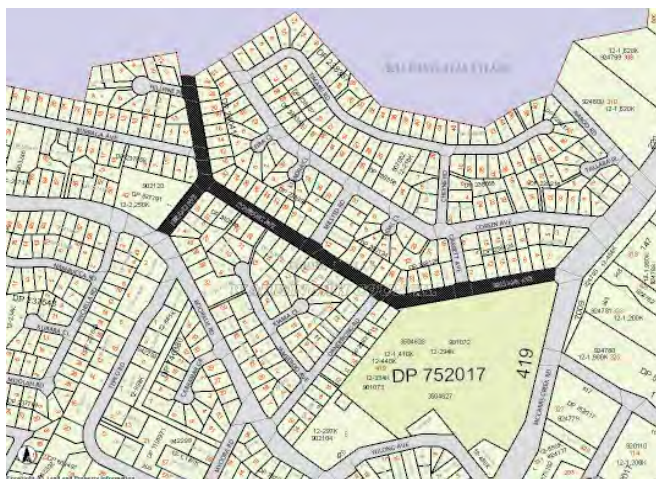
SCHEDULE 2

Roads Authority: Warringah
File No.: 10/15111
Council’s Reference: 2011/029371

SCHEDULE 1

Land District – Metropolitan;
Local Government Area – Warringah;
Parish – Broken Bay; County – Cumberland;

The whole of the Crown Public Roads known as Beltana Avenue, Cowrang Avenue and Nerang Avenue, Terrey Hills as shown by solid black shading on the diagram hereunder.



SCHEDULE 2

Roads Authority: Warringah
File No.: 10/15111
Council’s Reference: 2011/029371

TAMWORTH OFFICE

25-27 Fitzroy Street (PO Box 535), Tamworth NSW 2340

Phone: (02) 6764 5100 Fax: (02) 6766 3805

APPOINTMENT OF TRUST BOARD MEMBERS

PURSUANT to section 93 of the Crown Lands Act 1989, the persons whose names are specified in Column 1 of the Schedule hereunder, are appointed for the terms of office specified, as members of the trust board for the reserve trust specified opposite thereto in Column 2, which has been established and appointed as trustee of the reserve referred to opposite thereto in Column 3 of the Schedule.

ANDREW STONER, M.P.,
Minister for Regional Infrastructure and Services

SCHEDULE

Column 1	Column 2	Column 3
Warrick Leslie REES (re-appointment). Kevin John SHIELDS (re-appointment). Philip BOWER (re-appointment). Ronald Errol BOXSELL (new member). Barry Neville THOMSON (re-appointment). Geoffrey Lionel EATHER (re-appointment).	Boggabri Showground and Public Recreation Trust.	Reserve No.: 97766. Public Purpose: Public recreation and showground. Notified: 19 April 1985. File No.: TH80 R 65-006.

Term of Office

For a term commencing 9 November 2012 and expiring 8 November 2014.

NOTIFICATION OF CLOSING OF A ROAD

IN pursuance of the provisions of the Roads Act 1993, the road hereunder described is closed and the lands comprised therein cease to be public road and the rights of passage and access that previously existed in relation to the road is extinguished. Upon closing, title to the land, comprising the former public road, vests in the body specified in the Schedule hereunder.

ANDREW STONER, M.P.,
Minister for Regional Infrastructure and Services

Description

*Parish – Moredevil; County – Pottinger;
Land District – Gunnedah; L.G.A. – Liverpool Plains*

Road Closed: Lot 1, DP 1153641.

File No.: 07/0408.

Schedule

On closing, the land within Lot 1, DP 1153641 remains vested in the State of New South Wales as Crown land.

Description

*Parishes – Ferrier and Clift;
Counties – Buckland and Pottinger;
Land District – Gunnedah; L.G.A. – Gunnedah*

Road Closed: Lots 3-4, DP 1167072 (subject to easement/ right of carriageway created by Deposited Plan 1167072).

File No.: 10/13188.

Schedule

On closing, the land within Lots 3-4, DP 1167072 remains vested in the State of New South Wales as Crown land.

Description

*Parish – Mooki; County – Buckland;
Land District – Gunnedah; L.G.A. – Gunnedah*

Road Closed: Lot 5, DP 1167072.

File No.: 10/13188.

Schedule

On closing, the land within Lot 5, DP 1167072 remains vested in the State of New South Wales as Crown land.

REVOCATION OF RESERVATION OF CROWN LAND

PURSUANT to section 90 of the Crown Lands Act 1989, the reservation of Crown Land specified in Column 1 of the Schedule hereunder, is revoked to the extent specified opposite thereto in Column 2 of the Schedule.

ANDREW STONER, M.P.,
Minister for Regional Infrastructure and Services

SCHEDULE

Column 1	Column 2
Land District: Tamworth. Local Government Area: Tamworth Regional. Locality: North Tamworth. Reserve No.: 753848. Public Purpose: Future public requirements. Notified: 29 June 2007. File No.: 12/07011.	The part being Lot 42, DP No. 1161239, Parish Tamworth, County Inglis, of an area of 812 square metres.

Note: Subsequent to this revocation it is intended that Lot 42, DP 1161239 be sold by Private Treaty Sale.

WAGGA WAGGA OFFICE**Corner Johnston and Tarcutta Streets (PO Box 60), Wagga Wagga NSW 2650****Phone: (02) 6937 2700 Fax: (02) 6921 1851****NOTIFICATION OF CLOSING OF A ROAD**

IN pursuance of the provisions of the Roads Act 1993, the road hereunder described is closed and the lands comprised therein cease to be public road and the rights of passage and access that previously existed in relation to the road is extinguished. Upon closing, title to the land, comprising the former public road, vests in the body specified in the Schedule hereunder.

ANDREW STONER, M.P.,
Minister for Regional Infrastructure and Services

Description

*Parish – Batlow; County – Wynyard;
Land District – Tumut; L.G.A. – Tumut*

Road Closed: Lot 1, DP 1175895.
File No.: 10/15625.

Schedule

On closing, the land within Lot 1, DP 1175895 remains vested in the State of New South Wales as Crown land.

Description

*Parish – Hindmarsh; County – Wynyard;
Land District – Tumut; L.G.A. – Tumut*

Road Closed: Lot 1, DP 1141063.
File No.: 08/7142.

Schedule

On closing, the land within Lot 1, DP 1141063 remains vested in the State of New South Wales as Crown land.

Description

*Parishes – Talbingo, Boraig and Buddong;
Counties – Buccleuch and Selwyn;
Land District – Tumut; L.G.A. – Tumut*

Road Closed: Lots 1-4, DP 1178709 subject to easement created by Deposited Plan 1178709.
File No.: 11/13690.

Schedule

On closing, the land within Lots 1-4, DP 1178709 remains vested in the State of New South Wales as Crown land.

APPOINTMENT OF TRUST BOARD MEMBERS

PURSUANT to section 93 of the Crown Lands Act 1989, the persons whose names are specified in Column 1 of the Schedule hereunder, are appointed for the terms of office specified, as members of the trust board for the reserve trust specified opposite thereto in Column 2, which has been established and appointed as trustee of the reserve referred to opposite thereto in Column 3 of the Schedule.

ANDREW STONER, M.P.,
Minister for Regional Infrastructure and Services

SCHEDULE

Column 1	Column 2	Column 3
Gordon David JONES (re-appointment). Rupert RICHARDSON (re-appointment). John Curtis STEELE (re-appointment). Roger Lindsay HAMBLIN (re-appointment). David George HENDERSON (re-appointment). Graeme John HATTY (re-appointment).	Matong Crown Reserves Trust.	Reserve No.: 1001387. Public Purpose: Community purposes. Notified: 21 August 1998. Reserve No.: 91480. Public Purpose: Public hall. Notified: 10 August 1979. Reserve No.: 31133. Public Purpose: Public recreation. Notified: 7 July 1900. File No.: WA06 R 3.

Term of Office

For a term commencing the date of this notice and expiring 30 November 2014.

WESTERN REGION OFFICE
45 Wingewarra Street (PO Box 1840), Dubbo NSW 2830
Phone: (02) 6883 5400 Fax: (02) 6884 2067

APPOINTMENT OF TRUST BOARD MEMBERS

PURSUANT to section 93 of the Crown Lands Act 1989, the persons whose names are specified in Column 1 of the Schedule hereunder are appointed, for the terms of office specified in that Column, as members of the trust board for the reserve trust specified opposite thereto in Column 2, which has been established and appointed as trustee of the reserve referred to opposite thereto in Column 3 of the Schedule.

ANDREW STONER, M.P.,
 Minister for Regional Infrastructure and Services

SCHEDULE

<i>Column 1</i>	<i>Column 2</i>	<i>Column 3</i>
Wayne Trevis KRUTLI (new member)	Broken Hill Regional Events Centre	Dedication No. 630055 Public Purpose: Racecourse
David William GALLAGHER (new member)	Reserve Trust	Notified: 15 July 1949 File Ref.: 09/04082
Barry James KING (new member)		
For a term commencing the date of this notice and expiring 13 March 2013.		

APPOINTMENT OF TRUST BOARD MEMBERS

PURSUANT to section 93 of the Crown Lands Act 1989, the persons whose names are specified in Column 1 of the Schedule hereunder are appointed, for the terms of office specified in that Column, as members of the trust board for the reserve trust specified opposite thereto in Column 2, which has been established and appointed as trustee of the reserve referred to opposite thereto in Column 3 of the Schedule.

ANDREW STONER, M.P.,
 Minister for Regional Infrastructure and Services

SCHEDULE

<i>Column 1</i>	<i>Column 2</i>	<i>Column 3</i>
James Wynter WARDEN (new member)	Cumborah Recreation Reserve Trust	Reserve No. 31858 Public Purpose: Public recreation
Elizabeth Ann POWELL (re-appointment)		Notified: 8 December 1900 File Ref.: WL90R0048
For a term commencing the date of this notice and expiring 30 November 2014.		

WATER

UNCONTROLLED FLOWS ORDER FOR THE BELUBULA REGULATED RIVER WATER SOURCE 2012

under the

WATER MANAGEMENT ACT 2000

I, George Gates, having delegated authority from the Minister for Primary Industries, in pursuance of section 85A of the Water Management Act 2000, make the following order to authorise the taking of water from uncontrolled flows in accordance with clause 47 and clause 48 of the Water Sharing Plan for the Belubula Regulated River Water Source 2012.

Dated 5th day of November 2012.

GEORGE GATES,
Director, Water Management and Implementation,
NSW Office of Water
Signed for the Minister for Primary Industries
(by delegation)

Explanatory note

Section 85A of the Water Management Act 2000 provides that the Minister may, by order in writing, authorise the holders of regulated river (high security) access licences or regulated river (general security) access licences, or both, to take water from a water source in respect of which a management plan makes provision for the taking of water from uncontrolled flows that has not been credited to the accounts of those licences. The purpose of this order is to authorise the taking of uncontrolled flows by the holders of regulated river (general security) access licences and regulated river (high security) access licences nominating metered water supply works in the Belubula Regulated Water Source in accordance with clause 47 and clause 48 of the Water Sharing Plan for the Belubula Regulated River Water Source 2012.

Uncontrolled Flows Order for the Belubula Regulated River Water Source 2012

under the

Water Management Act 2000

1 Name of Order

This Order is the Uncontrolled Flows Order for the Belubula Regulated River Water Source 2012.

2 Commencement

This Order commences on the date on which it is published in the *NSW Government Gazette*.

3 Authority to take uncontrolled flows

3.1 The holders of regulated river (general security) access licences and regulated river (high security) access licences:

- a. with share components that specify the Belubula Regulated River water source; and
- b. which nominate a metered work in the Belubula Regulated River Water Source;

are authorised to take water from uncontrolled flows which arise from unregulated inflows to that water source that have not been credited to the water allocation account for a regulated river (general security) access licence or regulated river (high security) access licence.

- 3.2 Water may only be taken in accordance with announcements made by the Minister for the taking of water from uncontrolled flows.
- 3.3 Water may only be taken using a metered work.
- 3.4 Within 7 days of ceasing to take water from uncontrolled flows, regulated river (general security) access licence and regulated river (high security) access licences holders must supply State Water with meter readings taken immediately prior to and after the taking of uncontrolled flow.
- 3.5 The water sharing provisions of the Water Sharing Plan for the Belubula Regulated River Water Source 2012 that provide for the taking of water from uncontrolled flows under regulated river (general security) access licences and regulated river (high security) access licences are set out in Schedule 1.

Note

In accordance with clause 47 (4) and (6) and 48 (7) and (9) of the Water Sharing Plan for the Belubula Regulated River Water Source 2012, water may be withdrawn from a water allocation account of a regulated river (general security) access licence or regulated river (high security) access licence following the taking of uncontrolled flows.

4. Interpretation

In this order, *metered work* has the same meaning as under section 91I (4) of the Water Management Act 2000.

SCHEDULE 1 – Water Sharing Provisions that Provide
for the Taking of Water from Uncontrolled Flows

Water Sharing Plan for the Belubula Regulated Water Sources 2012

47 Taking of uncontrolled flows under regulated river (high security) access licences

- (1) An order under section 85A of the Act authorising the taking of uncontrolled flows may be made in accordance with the provisions of this clause for regulated river (high security) access licences that nominate a water supply work that has had metering equipment installed in connection with it.

Note. Uncontrolled flows are defined in the Dictionary to this Plan.

- (2) The following rules apply to the taking of uncontrolled flows:

- (a) when the sum of available water determinations in any water year is less than or equal to 0.2 ML per unit share for regulated river (high security) access licences then the taking of water will only be permitted when uncontrolled flows in the Belubula Regulated River are greater than or equal to 13 ML/day at the Helensholme gauge (412033),
- (b) when the sum of available water determinations in any water year is less than or equal to 0.5 ML and greater than 0.2 ML per unit share for regulated river (high security) access licences then the taking of water will only be permitted when uncontrolled flows in the Belubula Regulated River are greater than or equal to 20 ML/day at the Helensholme gauge (412033), and

- (c) when the sum of available water determinations in any water year is greater than 0.5 ML per unit share for regulated river (high security) access licences, the taking of water from uncontrolled flows will not be permitted.
- (3) The total amount of water that may be extracted under this clause in any water year by a regulated river (high security) access licence holder must not exceed an amount that is equal to 0.5 ML per unit share of the regulated river (high security) access licence share component.
- (4) If available water determinations are made for regulated river (high security) access licences during that water year after the taking of water from uncontrolled flows is no longer permitted, then the water allocation accounts of regulated river (high security) access licences will be debited by the volume of water taken from uncontrolled flows up to the amount credited to the account from those available water determinations.
- (5) Access licence holders must supply State Water with meter readings taken immediately prior to and after the taking of uncontrolled flow within 7 days of ceasing to take uncontrolled flows.
- (6) If the total amount of uncontrolled flows taken under an access licence exceeds the limits specified in subclause (3), then a volume equivalent to the exceedence will be debited from allocations credited to the A sub-account of the access licence water allocation account in that water year.
- 48 Taking of uncontrolled flows under regulated river (general security) access licences**
- (1) Subject to subclause (2), an order under section 85A of the Act authorising the taking of uncontrolled flows may be made in accordance with the provisions of this clause for regulated river (general security) access licences that nominate a water supply work that has had metering equipment installed in connection with it.
- (2) Any order made under subclause (1) will not apply to an access licence specified in Schedule 1.
- (3) For the purpose of this clause, *effective available water* equals $(C + D)/E$, where:
- (a) **C** equals the volume of water in all regulated river (general security) access licence A sub-accounts resulting from adjustments under clause 45 (7),
- (b) **D** equals the sum of allocations credited to all regulated river (general security) access licence A sub-accounts in that water year from available water determinations, and
- (c) **E** equals the sum of the share components of all regulated river (general security) access licences in this water source.
- (4) An order under section 85A of the Act and subclause (1) may authorise the taking of water:
- (a) that has not been credited to a regulated river (general security) access licence water allocation account, and
- (b) when there are uncontrolled flows that have arisen from unregulated inflows to the Belubula Regulated River Water Source.
- (5) The following rules apply to the taking of uncontrolled flows:
- (a) when the effective available water is less than or equal to 0.2 then the taking of water will only be permitted when flows in the Belubula Regulated River are greater than or equal to 13 ML/day at the Helensholme gauge (412033),
- (b) when the effective available water is less than or equal to 0.5 and greater than 0.2 then the taking of water will only be permitted when flows in the Belubula Regulated River are greater than or equal to 20 ML/day at the Helensholme gauge (412033), and
- (c) when the effective available water is greater than 0.5, the taking of water from uncontrolled flows will not be permitted.
- (6) The total amount of uncontrolled flow that may be extracted in any water year by a regulated river (general security) access licence holder must not exceed an amount that is the lesser of:
- (a) **F – G**, where:
- (i) **F** equals the take limit for that water year multiplied by the share component of that regulated river (general security) access licence, and
- (ii) **G** equals the volume of water allocations credited to the A sub-account under clause 45 (7) and any available water determinations credited to the A sub-account made between the commencement of the water year and the commencement of uncontrolled flow access, and
- (b) 0.5 ML multiplied by the share component for that regulated river (general security) access licence at the beginning of that water year.
- (7) If available water determinations are made for regulated river (general security) access licences during that water year after the taking of water from uncontrolled flows has commenced, then the water allocation accounts of regulated river (general security) access licences will be debited by the volume of water taken from uncontrolled flows up to the amount credited to the account from those available water determinations.
- (8) Access licence holders must supply State Water with meter readings taken immediately prior to and after the taking of uncontrolled flow within 7 days of ceasing to take uncontrolled flows.
- (9) If the total amount of uncontrolled flows taken under an access licence exceeds the limits specified in subclause (6), then a volume equivalent to the exceedence will be debited from allocations credited to the access licence water allocation account in that water year.

Other Notices

APPRENTICESHIP AND TRAINEESHIP ACT 2001

NOTICE is given that the Commissioner for Vocational Training has made a Vocational Training Order for the recognised traineeship vocation of:

- Sustainability – Competitive Systems Practices

under section 6 of the Apprenticeship and Traineeship Act 2001.

The Order specifies a number of matters relating to the required training for this vocation including the term/s of traineeships, probationary period/s and qualification/s to be undertaken.

The Order will take effect from the date of publication in the *NSW Government Gazette*.

A copy of each Order may be inspected at any State Training Services Regional Office of the NSW Department of Education and Communities or on the internet at: https://www.training.nsw.gov.au/cib_vto/cibs/cib_563.html

ASSOCIATIONS INCORPORATION ACT 2009

Reinstatement of Cancelled Association Pursuant to Section 84

TAKE notice that the incorporation of MUDGEE RACE CLUB INC (Y0115905) cancelled on 18 February 2011 is reinstated pursuant to section 84 of the Associations Incorporation Act 2009.

Dated this 7th day of November 2012.

ROBYNE LUNNEY,
Manager, Case Management,
Registry of Co-operatives & Associations,
NSW Fair Trading,
Department of Finance & Services

ASSOCIATIONS INCORPORATION ACT 2009

Cancellation of Incorporation Pursuant to Section 72

TAKE notice that the incorporation of the following associations is cancelled by this notice pursuant to section 72 of the Associations Incorporation Act 2009.

Cancellation is effective as at the date of gazettal.

Yoga for Health Australia Incorporated – Inc9874737
Lions Club of Mendooran Inc – Y0652922
Friends of Toukley Community Group Incorporated – Inc9885508
Marist Brothers' Old Collegians' P and C Association Inc – Y1041414
Burra Urila Residents and Ratepayers Association Incorporated – Inc9885261
Grafton Artsfest Incorporated – Y1969043
Hydro Aluminium Social Club Incorporated – Y0928215
Tweed Coast Garden Association Inc – Inc9878715
The O'Neill Foundation Incorporated – Inc9878507
Home Dream Incorporated – Inc9893595

Nowra Italian Cultural Association Incorporated – Inc9885017

Central Coast First Incorporated – Inc9887690

Dated 31st day of October 2012.

ROBYNE LUNNEY,
Manager, Case Management,
Registry of Co-operatives & Associations,
NSW Fair Trading,
Department of Finance & Services

DISTRICT COURT ACT 1973

District Court of New South Wales

Direction

PURSUANT to section 173 of the District Court Act 1973, I direct that the District Court shall sit in its criminal jurisdiction at the place and time shown as follows:

Dubbo 8 April 2013 (5 weeks)
Special Fixture

Dated this 5th day of November 2012.

R. O. BLANCH,
Chief Judge

CONTAMINATED LAND MANAGEMENT ACT 1997

Environment Protection Authority

Declaration of Significantly Contaminated Land

(Section 11 of the Contaminated Land Management Act 1997)

Declaration Number 20121104; Area Number 3311

THE Environment Protection Authority (EPA) declares the following land to be significantly contaminated land under the Contaminated Land Management Act 1997 ("the Act"):

1. Land to which this declaration applies ("the site")

The land to which this notice applies is known as the former Cowra Gasworks site. The site is located at 30 Brougham Street, Cowra NSW (described as Lot 1 in DP 579565) in the local government area of Cowra Shire. A map of the site is available for inspection at the offices of the EPA, 59 Goulburn Street, Sydney NSW.

2. Nature of contamination affecting the site:

The EPA has found that the site is contaminated with the following substances ("the contaminants"):

- Heavy end petroleum hydrocarbons;
- Benzene, toluene and xylenes; and
- Polycyclic aromatic hydrocarbons.

3. Nature of harm that the contaminants have caused:

The EPA has considered the matters in section 12 of the Act and for the following reasons has determined that the land is contaminated and that the contamination is significant enough to warrant regulation under the Act:

- Heavy end petroleum hydrocarbon and polycyclic aromatic hydrocarbon contaminant concentrations in soil exceed relevant human health guideline values and human exposures may occur; and
- Groundwater is contaminated with volatile petroleum hydrocarbon and polycyclic aromatic hydrocarbon compounds at concentrations exceeding beneficial use criteria.

4. Further action under the Act

The making of this declaration does not prevent the carrying out of voluntary management of the site and any person may submit a voluntary management proposal for the site to the EPA.

5. Submissions invited

The public may make written submissions to the EPA on:

- Whether the EPA should issue a management order in relation to the site; or
- Any other matter concerning the site.

Submissions should be made in writing to:

Manager, Contaminated Sites,
Environment Protection Authority,
PO Box A290,
Sydney South NSW 1232

or faxed to (02) 9995 5930

by not later than 7 December 2012.

Date: 5 November 2012.

NIALL JOHNSTON,
Manager, Contaminated Sites,
Environment Protection Authority

NOTE:

Management order may follow

If management of the site or part of the site is required, the EPA may issue a management order under section 14 of the Act.

Amendment/Repeal

This declaration may be amended or repealed. It remains in force until it is otherwise amended or repealed. The subsequent declaration must state the reasons for the amendment or repeal (section 44 of the Act).

Information recorded by the EPA

Section 58 of the Act requires the EPA to maintain a public record. A copy of this significantly contaminated land declaration will be included in the public record.

Information recorded by councils

Section 59 of the Act requires the EPA to give a copy of this declaration to the relevant local council. The council is then required to note on its planning certificate issued pursuant to section 149 (2) of the Environmental Planning and Assessment Act 1979 that the land is declared significantly contaminated land. The EPA is required to notify council as soon as practicable when the declaration is no longer in force and the notation on the section 149 (2) certificate is no longer required.

Relationship to other regulatory instrument

This declaration does not affect the provisions of any relevant environmental planning instruments which apply to the land or provisions of any other environmental protection legislation administered by the EPA.

GEOGRAPHICAL NAMES ACT 1966

PURSUANT to the provisions of section 8 of the Geographical Names Act 1966, the Geographical Names Board hereby notifies that it proposes to assign the names listed hereunder as geographical names.

Any person wishing to make comment upon these proposals may within one (1) month of the date of this notice, write to the Secretary of the Board with that comment.

Proposed Name: Iwata Gully
Assigned Name: Blackfellows Gully
Designation: Creek

L.G.A.: Uralla Shire Council
Parish: Elton
County: Sandon
L.P.I. Map: Balala
1:100,000 Map: Bendemeer 9136
Reference: GNB 5245-3

Proposed Name: Jonas Bradley Park
Designation: Reserve
L.G.A.: Blacktown City Council

Parish: Gidley
County: Cumberland
L.P.I. Map: Riverstone
1:100,000 Map: Penrith 9030
Reference: GNB 5620

Proposed Name: Silverleaf Park
Designation: Reserve
L.G.A.: Blacktown City Council
Parish: Gidley

County: Cumberland
L.P.I. Map: Riverstone
1:100,000 Map: Penrith 9030
Reference: GNB 5620

Proposed Name: Gathering Park
Designation: Reserve
L.G.A.: Blacktown City Council
Parish: Gidley

County: Cumberland
L.P.I. Map: Riverstone
1:100 000 Map: Penrith 9030
Reference: GNB 5620

Proposed Name: The Ponds Parklands
Designation: Reserve
L.G.A.: Blacktown City Council
Parish: Gidley

County: Cumberland
L.P.I. Map: Riverstone
1:100,000 Map: Penrith 9030
Reference: GNB 5620

Proposed Name: Kookaburra Park
Designation: Reserve
L.G.A.: Liverpool City Council

Parish: St Luke
County: Cumberland
L.P.I. Map: Liverpool
1:100 000 Map: Penrith 9030
Reference: GNB 5621

Proposed Name: Lincolns Rock
Designation: Lookout
L.G.A.: Blue Mountains City Council

Parish: Jamison
County: Cook
L.P.I. Map: Katoomba
1:100,000 Map: Katoomba 8930
Reference: GNB 5619

Proposed Name: Lakes Edge Park
 Designation: Reserve
 L.G.A.: Blacktown City Council
 Parish: Gidley
 County: Cumberland
 L.P.I. Map: Riverstone
 1:100,000 Map: Penrith 9030
 Reference: GNB 5620

Proposed Name: Waterfall Park
 Designation: Reserve
 L.G.A.: Blacktown City Council
 Parish: Gidley
 County: Gloucester
 L.P.I. Map: Riverstone
 1:100,000 Map: Penrith 9030
 Reference: GNB 5620

Proposed Name: Ridgeline Park
 Designation: Reserve
 L.G.A.: Blacktown City Council
 Parish: Gidley
 County: Cumberland
 L.P.I. Map: Riverstone
 1:100,000 Map: Penrith 9030
 Reference: GNB 5620

Proposed Name: Bruno Dominelli Park
 Designation: Reserve
 L.G.A.: Liverpool City Council
 Parish: St Luke
 County: Cumberland
 L.P.I. Map: Liverpool
 1:100,000 Map: Penrith 9030
 Reference: GNB 5621

Proposed Name: Rosella Park
 Designation: Reserve
 L.G.A.: Liverpool City Council
 Parish: St Luke
 County: Cumberland
 L.P.I. Map: Liverpool
 1:100,000 Map: Penrith 9030
 Reference: GNB 5321

The position and the extent for these features are recorded and shown within the Geographical Names Register of New South Wales. This information can be accessed through the Board's website at www.gnb.nsw.gov.au

In accordance with section 9 of the Geographical Names Act 1966 all submissions lodged may be subject to a Freedom of Information application and may be viewed by a third party to assist the Board in considering this proposal.

KEVIN RICHARDS,
 A/Secretary

Geographical Names Board
 PO Box 143, Bathurst NSW 2795

GEOGRAPHICAL NAMES ACT 1966

Proposal to Assign Names
 Within the Parramatta Local Government Area

PURSUANT to the provisions of section 8 of the Geographical Names Act 1966, the Geographical Names Board proposes to assign the following names: Cowells Lane Reserve, John Curtin Reserve, Doyle Ground, Loftus Square, Parramatta Park, Max Ruddock Reserve, K13 Submarine Memorial Park,

Fred Spurway Park, Robin Thomas Reserve, Carlingford Memorial Park, George Harley Park, Sturt Park, Thomas Wemyss Park, Excelsior Street Reserve, Frank Hayes Park and Willsford Homes Playground in the Parramatta Local Government Area.

Any person wishing to make comment upon any of these proposals may prior to Friday, 7 December 2012 write to the Secretary of the Board with that comment. In accordance with section 9 of the Geographical Names Act 1966 all submissions lodged may be subject to a freedom of information application and may be viewed by a third party to assist the Board in considering this proposal. Comments can also be submitted on the Geographical Names Board's website at www.gnb.nsw.gov.au

The position and the extent for these features are recorded and shown within the Geographical Names Register of New South Wales. This information can be accessed through the Board's website at www.gnb.nsw.gov.au

K. RICHARDS,
 A/Secretary

Geographical Names Board
 PO Box 143, Bathurst NSW 2795

GEOGRAPHICAL NAMES ACT 1966

Notice of Proposal to Amend Address Locality Boundaries
 Within the Penrith Local Government Area

PURSUANT to the provisions of section 8 of the Geographical Names Act 1966, the Geographical Names Board hereby notifies that it proposes to amend address locality boundaries in the Penrith Local Government Area resulting in the extension of Glenmore Park into Mulgoa as shown on map GNB3890-5-A.

Copies of map GNB3890-5-A may be viewed at Penrith Civic Centre, 601 High Street, Penrith, the Penrith City Library, St Marys Library and the Queen Street Centre, 207-209 Queen Street, St Marys from Friday, 9 November 2012 until Monday, 10 December 2012.

A copy of Map GNB3890-5-A will also be on display at the office of the Geographical Names Board, 346 Panorama Avenue, Bathurst NSW 2795 during the above dates. This proposal may also be viewed and submissions lodged on the Geographical Names Board website at www.gnb.nsw.gov.au.

Any person wishing to make comment upon this proposal may prior to Monday, 10 December 2012 write to the Secretary of the Board with that comment. All submissions lodged in accordance with section 9 of the Geographical Names Act 1966 may be subject to a freedom of information application and may be viewed by a third party to assist the Board in considering this proposal.

KEVIN RICHARDS,
 Acting Secretary

Geographical Names Board
 PO Box 143, Bathurst NSW 2795

GEOGRAPHICAL NAMES ACT 1966

Notice of Proposal to Amend Address Locality Boundaries
Within the Newcastle Local Government Area

PURSUANT to the provisions of section 8 of the Geographical Names Act 1966, the Geographical Names Board hereby notifies that it proposes to amend address locality boundaries in the Newcastle Local Government Area resulting in the extension of New Lambton into Kotara as shown on map GNB3538-3-A.

Copies of map GNB3538-3-A may be viewed at the City Administration Centre, 282 King Street, Newcastle, The New Lambton Library, Regent Street, New Lambton and the Adamstown Library, Brunner Road, Adamstown from Friday, 9 November 2012 until Monday, 10 December 2012.

A copy of Map GNB3538-3-A will also be on display at the office of the Geographical Names Board, 346 Panorama Avenue, Bathurst NSW 2795 during the above dates. This proposal may also be viewed and submissions lodged on the Geographical Names Board website at www.gnb.nsw.gov.au.

Any person wishing to make comment upon this proposal may prior to Monday, 10 December 2012 write to the Secretary of the Board with that comment. All submissions lodged in accordance with section 9 of the Geographical Names Act 1966 may be subject to a freedom of information application and may be viewed by a third party to assist the Board in considering this proposal.

KEVIN RICHARDS,
Acting Secretary

Geographical Names Board,
PO Box 143, Bathurst NSW 2795

GEOGRAPHICAL NAMES ACT 1966

Proposal to Amend Address Locality Boundaries
Within the Gwydir Local Government Area

PURSUANT to the provisions of section 8 of the Geographical Names Act 1966, the Geographical Names Board hereby notifies that it proposes to amend the address locality boundaries of Dinoga, Keera and Bingara in the Gwydir Local Government Area as shown on map GNB5030-4-A.

Map GNB5030-4-A may be viewed at Gwydir Shire Council's Officers located at 33 Maitland Street, Bingara NSW 2404 and 54 Hope Street, Warialda NSW 2404 from Wednesday, 7 November 2012 until Monday, 10 December 2012.

A copy of map GNB5030-4-A will also be on display at the office of the Geographical Names Board, Land and Property Information, 346 Panorama Avenue, Bathurst NSW 2795 during the above dates. This proposal may also be viewed and submissions lodged on the Geographical Names Board's internet site at www.gnb.nsw.gov.au.

Any person wishing to make comment upon this proposal may prior to Monday, 10 December 2012 write to the Secretary of the Board with that comment. In accordance with section 9 of the Geographical Names Act 1966 all submissions lodged may be subject to a freedom of information application and may be viewed by a third party to assist the Board in considering this proposal.

K. RICHARDS,
A/Secretary

Geographical Names Board
PO Box 143, Bathurst NSW 2795

NATIONAL PARKS AND WILDLIFE ACT 1974

Delegate Aboriginal Reserve Aboriginal Place

IN pursuance of the powers vested in me under section 84 of the National Parks and Wildlife Act 1974, I, the Minister for the Environment, do, by this my order, declare such of the lands described hereunder as an Aboriginal Place. The place shall be known as the Delegate Aboriginal Reserve Aboriginal Place.

It is my opinion that this place is or was of special significance to Aboriginal culture.

The values for which the Aboriginal Place is significant to Aboriginal culture includes, but is not limited to the area being a traditional camping ground located on the edge of the Southern Monaro. It was declared an Aboriginal Reserve in June 1892 and occupied by the Monaro, Ngarigo and other Aboriginal people of the region. The Reserve abuts the Delegate River and is in sight of Delegate Mountain, a significant Aboriginal landmark feature in the Ngarigo landscape.

Traditional ancestral occupation of and/or associations with the Delegate Aboriginal Reserve is one of most commonly articulated basis for asserting a Monaro/Ngarigo connection. The Reserve area is regarded as a place imbued with spiritual and cultural values that 'link' people today with the 'old people' from the past.

The area is regarded as a traditional teaching place for creation (dreaming) stories, cultural practices, resource use such as animal, plant and mineral resources of the area valued as a sign of its traditional usage and association with Aboriginal People's cultural practice and ceremonies.

The area is valued for its tangible and intangible links between Aboriginal people and cultural practice of the past links into the future. Today, Aboriginal people continue to visit and use the Reserve to maintain their social and cultural connection with the cultural landscape and to pass on knowledge of its cultural and historical significance to future generations.

Note: under section 86 of the National Parks and Wildlife Act 1974, it is an offence to harm or desecrate (harm includes destroy, deface or damage) an Aboriginal Place.

Should any activities that may cause harm to this Aboriginal Place be contemplated, consent should be sought from the Director General of the Department of Premier and Cabinet. Activities or works for the conservation or protection of this Aboriginal Place that are carried out by an officer of the Office of Environment and Heritage, or under the direction of such an officer, in accord with section 87A (a) of the Act, may be exempt.

Activities which might harm or desecrate this Aboriginal Place include, but are not limited to, the following: the erection of a building in the area; the carrying out of a work in, on or under the area; the subdivision of the area; the clearing of native vegetation in the area; and any activity that disturbs the area.

ROBYN PARKER, M.P.,
Minister for the Environment

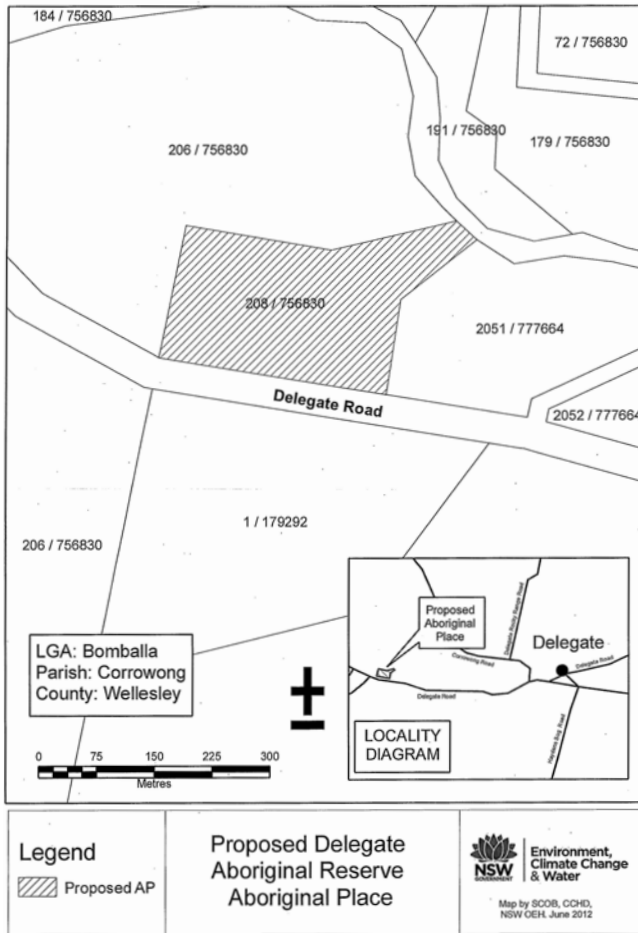
GOD SAVE THE QUEEN!

SCHEDULE

Land District – Bombala; LGA – Bombala

County of Wellesley, Parish of Corrowong, about 41.4 hectares, being Lot 208, DP 756830.

Papers: FIL08/15591



DESCRIPTION

Land District – Wagga Wagga; Council – Lockhart

County of Mitchell, Parish of Hanging Rock, 41.23 hectares, being Lot 3, DP 837096. OEH FIL 12/8799

TRANSPORT ADMINISTRATION ACT 1988

LAND ACQUISITION (JUST TERMS COMPENSATION) ACT 1991

Notice of Compulsory Acquisition of Land for the Purposes of Transport for New South Wales

TRANSPORT FOR NEW SOUTH WALES, with the approval of Her Excellency the Governor, declares that the land described in the Schedule hereto is acquired by compulsory process under the provisions of the Land Acquisition (Just Terms Compensation) Act 1991 for the purposes of Transport New South Wales, as authorised by the Transport Administration Act 1988.

Dated this 6th day of November 2012.

General Manager,
Country Rail Contracts,
Transport Services Division

SCHEDULE

All that piece or parcel of land situated at Greta in the Local Government Area of Cessnock, Parish of Branxton, County of Northumberland and State of New South Wales, being identified as part Lot 1, Deposited Plan 117189 and whole Lot 2, Deposited Plan 1179434 being land formerly identified as Lot 22, Deposited Plan 1141084 and having an area of 3,700 square metres.

NATIONAL PARKS AND WILDLIFE ACT 1974

Proclamation

I, Professor MARIE BASHIR, A.C., C.V.O., Governor of the State of New South Wales, with the advice of the Executive Council and in pursuance of the powers vested in me under section 68 of the National Parks and Wildlife Act 1974, with the consent of every owner and occupier do, on the recommendation of the Chief Executive of the Office of Environment and Heritage (OEH), by this my Proclamation declare the lands described hereunder to be a Wildlife Refuge for the purposes of the abovementioned Act.

To be known as “**Athol Grove Wildlife Refuge**”.

Signed and sealed at Sydney this 24th day of October 2012.

MARIE BASHIR, A.C., C.V.O.,
Governor

By Her Excellency’s Command,

ROBYN PARKER, M.P.,
Minister for the Environment

GOD SAVE THE QUEEN!

PRIVATE ADVERTISEMENTS

COUNCIL NOTICES

BATHURST REGIONAL COUNCIL

Local Government Act 1993

Land Acquisition (Just Terms Compensation) Act 1991

Notice of Compulsory Acquisition of Land

BATHURST REGIONAL COUNCIL declares with the approval of Her Excellency the Governor that the lands described in Schedule below, excluding any mines or deposits of minerals in the lands, are acquired by compulsory process in accordance with the provisions of the Land Acquisition (Just Terms Compensation) Act 1991, for a waste management facility. Dated at Bathurst, this 10th day of August 2012. DAVID JOHN SHERLEY, General Manager, Bathurst Regional Council, 158 Russell Street, Bathurst NSW 2795.

SCHEDULE

Lot 1, DP 1171406.

Lot 2, DP 1171406.

Lot 3, DP 1171406.

Lot 4, DP 1171406.

Lot 5, DP 1171406.

[6731]

EUROBODALLA SHIRE COUNCIL

Roads Act 1993, Section 162

Roads (General) Regulation 2008

Re-Naming of Public Roads

File Nos E05.9211 & E05.9212

NOTICE is hereby given that Eurobodalla Shire Council, in pursuance of the Roads Act 1993, Roads (General) Regulation 2008 has approved the re-naming of the following road for gazettal:

<i>Existing Name</i>	<i>New Road Name</i>
Kellys Close, Bingie (also known as Kellys Lake Close)	Pinnacles Close, Bingie

The above re-naming has been advertised for the prescribed 28 day period. No objections have been received. PAUL J. ANDERSON, General Manager, Eurobodalla Shire Council, PO Box 99, Moruya NSW 2537. [6732]

EUROBODALLA SHIRE COUNCIL

Local Government Act 1993

Land Acquisition (Just Terms Compensation) Act 1991

Notice of Compulsory Acquisition of Land

THE Eurobodalla Shire Council declares, with the approval of His Excellency the Lieutenant-Governor, that the land described in the Schedule below, excluding any mines or deposits of minerals in the land, is acquired by compulsory process in accordance with the provisions of the Land Acquisition (Just Terms Compensation) Act 1991, for a water

treatment plant. Dated at Moruya, this 2nd day of November 2012. PAUL J. ANDERSON, General Manager, Eurobodalla Shire Council, PO Box 99, Moruya NSW 2537.

SCHEDULE

Lot 1, DP 1173024.

[6733]

SHOALHAVEN CITY COUNCIL

Naming of Roads

SHOALHAVEN CITY COUNCIL advises that in accordance with section 162.1 of the Roads Act 1993 and Part 2, Division 2, Clause 9, Road Regulations 2008, it has named the following roads:

Road Names – Petrel Close, Fantail Street, Swallow Drive, Silvereys Close, Dove Close

Location – Subdivision of Lot 158, DP 1068633 off Old Southern Road, South Nowra

No objections to the proposed name were received within the advertising period. R. PIGG, General Manager, Shoalhaven City Council, Bridge Road, Nowra NSW 2541. File SF9298-03 [6734]

WINGECARRIBEE SHIRE COUNCIL

Roads Act 1993, Section 162

Roads (General) Regulation 2000

Renaming of Road

File No. 7810/12

NOTICE is hereby given that Wingecarribee Shire Council under delegated authority and in pursuance of section 162 of the Roads Act 1993, has approved the following road name:

<i>Previous Name</i>	<i>Proposed Name</i>
Naming of an unnamed Crown road, running north off Wombeyan Caves Road, High Range, Parish of Wanganderry, County of Camden.	Charcoal Lane.

JASON R. GORDON, General Manager, Wingecarribee Shire Council, PO Box 141, Moss Vale NSW 2577. [6735]

WOOLLAHRA MUNICIPAL COUNCIL

Notification of Dedication as a Public Road

ON 22 August 2011, Woollahra Municipal Council resolved to dedicate the land as a public road in accordance with section 16 of the Roads Act 1993.

Descriptions

The following land in the Parish of Alexandria and County of Cumberland:

- Part of the land remaining in Deed of Lease and Release Book M No. 538 (1838) (being part of Hopetoun Avenue, Vacluse, between Salisbury Street and Russell Street).

2. Part of the land remaining in Volume 1730, Folio 42 (being part of Hopetoun Avenue, Vaucluse, between Russell Street and Wentworth Road).
3. Part of the land remaining in Conveyance Book 232, No. 348 and Conveyance Book 235, No. 555 (being part of Hopetoun Avenue, Vaucluse, between Russell Street and Wentworth Road).
4. Part of the land remaining in Serial 54, Folio 122, and Volume 1254, Folio 98 (being part of Hopetoun Avenue, Vaucluse, between Russell Street and Wentworth Road).
5. Part of the land remaining in Conveyance Book 23, No. 56 (being part of Hopetoun Avenue, Vaucluse, between Russell Street and Wentworth Road).

Note: On dedication, title for the land will remain vested in Woollahra Municipal Council as public road.

GARY JAMES, General Manager, Woollahra Municipal Council, PO Box 61, Double Bay NSW 1360. [6736]

ISSN 0155-6320

Authorised to be printed
TONY DUCKMANTON, Government Printer.