



# Government Gazette

OF THE STATE OF  
NEW SOUTH WALES

**Number 26**  
**Friday, 9 March 2012**

Published under authority by Government Advertising

## LEGISLATION

### Online notification of the making of statutory instruments

Week beginning 27 February 2012

THE following instruments were officially notified on the NSW legislation website ([www.legislation.nsw.gov.au](http://www.legislation.nsw.gov.au)) on the dates indicated:

#### Proclamations commencing Acts

[Clubs, Liquor and Gaming Machines Legislation Amendment Act 2011 \(2012-64\)](#) — published LW 1 March 2012

[Sporting Venues Authorities Amendment \(Venues NSW\) Act 2011 \(2012-69\)](#) — published LW 2 March 2012

#### Regulations and other statutory instruments

[Casino Control Amendment \(Change of Name\) Regulation 2012 \(2012-65\)](#) — published LW 1 March 2012

[Casino, Liquor and Gaming Control Authority Amendment \(Miscellaneous\) Regulation 2012 \(2012-66\)](#) — published LW 1 March 2012

[Fisheries Management Amendment \(Threatened Species Conservation\) Order 2012 \(2012-79\)](#) — published LW 2 March 2012

[Gaming Machines Amendment \(Change of Name\) Regulation 2012 \(2012-67\)](#) — published LW 1 March 2012

[Liquor Amendment \(Reviews\) Regulation 2012 \(2012-68\)](#) — published LW 1 March 2012

[Public Holidays Amendment \(Additional Public Holidays in Parts of State\) Order \(No 2\) 2012 \(2012-59\)](#) — published LW 29 February 2012

[Public Holidays Amendment \(Cabonne Shire Council\) Order 2012 \(2012-60\)](#) — published LW 29 February 2012

[Public Holidays Amendment \(Goulburn Mulwaree Council\) Order 2012 \(2012-61\)](#) — published LW 29 February 2012

[Public Holidays Amendment \(Newcastle City Council\) Order 2012 \(2012-62\)](#) — published LW 29 February 2012

[Public Sector Employment and Management \(Office of the Environment Protection Authority\) Order 2012 \(2012-63\)](#) — published LW 29 February 2012

[Sporting Venues Authorities Amendment Regulation 2012 \(2012-70\)](#) — published LW 2 March 2012

## Environmental Planning Instruments

Gosford Local Environmental Plan No 471 (2012-71) — published LW 2 March 2012

Gundagai Local Environmental Plan 2011 (Amendment No 1) (2012-72) — published LW 2 March 2012

Manly Local Environmental Plan 1988 (Amendment No 82) (2012-73) — published LW 2 March 2012

Pittwater Local Environmental Plan 1993 (Amendment No 95) (2012-74) — published LW 2 March 2012

Port Macquarie-Hastings Local Environmental Plan 2011 (Amendment No 5) (2012-75) — published LW 2 March 2012

Port Macquarie-Hastings Local Environmental Plan 2011 (Amendment No 9) (2012-76) — published LW 2 March 2012

Ryde Local Environmental Plan 2010 (Amendment No 2) (2012-77) — published LW 2 March 2012

---

## Other Legislation

---



New South Wales

### Notice of Final Determination

under the

Threatened Species Conservation Act 1995

The Scientific Committee established under the *Threatened Species Conservation Act 1995* has made a final determination to insert the following ecological community as an endangered ecological community under that Act and, accordingly, Schedule 1 to that Act is amended by inserting in Part 3 in alphabetical order:

Coastal Upland Swamp in the Sydney Basin Bioregion (as described in the final determination of the Scientific Committee to list the ecological community)

This Notice commences on the day on which it is published in the Gazette.

Dated, this 20th day of December 2011.

Dr Richard Major  
Chairperson of the Scientific Committee

#### **Copies of final determination and reasons**

Copies of the final determination and the reasons for it are available to members of the public (free of charge) as follows:

- (a) on the Internet at [www.environment.nsw.gov.au](http://www.environment.nsw.gov.au),
- (b) by contacting the Scientific Committee Unit, by post C/- Office of Environment and Heritage, PO Box 1967, Hurstville BC NSW 1481, by telephone (02) 9585 6940 or by facsimile (02) 9585 6989,
- (c) in person at the Office of Environment and Heritage Information Centre, Level 14, 59–61 Goulburn St, Sydney.

## THREATENED SPECIES CONSERVATION ACT 1995

## Final Determination

THE Scientific Committee, established by the Threatened Species Conservation Act, has made a Final Determination to list Coastal Upland Swamp in the Sydney Basin Bioregion as an ENDANGERED ECOLOGICAL COMMUNITY on Part 3 of Schedule 1 of the Act. The listing of Endangered Ecological Communities is provided for by Part 2 of the Act.

The Scientific Committee has found that:

- Coastal Upland Swamp in the Sydney Basin Bioregion is the name given to the ecological community in the Sydney Basin bioregion associated with periodically waterlogged soils on Hawkesbury sandstone plateaus, generally where mean annual rainfall exceeds 950 mm. Coastal Upland Swamp is generally associated with soils that are acidic and vary from yellow or grey mineral sandy loams with a shallow organic horizon to highly organic spongy black peats with pallid subsoils. They vary in depth from a few centimetres to at least 4 metres. The vegetation is dominated by sclerophyll shrubs and/or sedges, with dynamic mosaics of structural forms that may include tall scrub, open heath and/or sedgeland. Although typically treeless, Coastal Upland Swamp may include scattered trees. In NSW all sites are within the Sydney Basin Bioregion (*sensu* Thackway & Cresswell 1995). A map of this version of the Interim Biogeographic Regionalisation of Australia is available at <http://www.environment.nsw.gov.au/committee/ListofScientificCommitteeDeterminations.htm>.
- Coastal Upland Swamp in the Sydney Basin bioregion is characterised by the following assemblage of species:
 

<i>Actinotus minor</i>	<i>Almaleea paludosa</i>
<i>Baeckea imbricata</i>	<i>Baeckea linifolia</i>
<i>Banksia ericifolia</i>	<i>Banksia oblongifolia</i>
<i>Banksia robur</i>	<i>Bauera microphylla</i>
<i>Baumea acuta</i>	<i>Baumea teretifolia</i>
<i>Blandfordia nobilis</i>	<i>Boronia parviflora</i>
<i>Burchardia umbellata</i>	<i>Cassytha glabella</i>
<i>Chorizandra sphaerocephala</i>	<i>Cryptandra ericoides</i>
<i>Dampiera stricta</i>	<i>Dillwynia floribunda</i>
<i>Drosera binata</i>	<i>Drosera spathulata</i>
<i>Empodisma minus</i>	<i>Entolasia stricta</i>
<i>Epacris microphylla</i>	<i>Epacris obtusifolia</i>
<i>Epacris paludosa</i>	<i>Eurychorda complanata</i>
<i>Gahnia sieberiana</i>	<i>Gleichenia microphylla</i>
<i>Gonocarpus micranthus</i>	<i>Gonocarpus salsoloides</i>
<i>Gonocarpus tetragynus</i>	<i>Goodenia dimorpha</i>
<i>Grevillea oleoides</i>	<i>Grevillea parviflora</i>
<i>Gymnoschoenus sphaerocephalus</i>	<i>Haemodorum corymbosum</i>
<i>Hakea teretifolia</i>	<i>Hibbertia serpyllifolia</i>
<i>Lepidosperma limicola</i>	<i>Lepidosperma neesii</i>
<i>Leptocarpus tenax</i>	<i>Leptospermum grandifolium</i>
<i>Leptospermum juniperinum</i>	<i>Leptospermum squarrosum</i>
<i>Lepyrodia scariosa</i>	<i>Lindsaea linearis</i>
<i>Melaleuca squarrosa</i>	<i>Mirbelia rubiifolia</i>
<i>Mitrasacme polymorpha</i>	<i>Opercularia varia</i>
<i>Petrophile pulchella</i>	<i>Plinthanthesis paradoxa</i>
<i>Ptilothrix deusta</i>	<i>Pultenaea aristata</i>
<i>Schoenus brevifolius</i>	<i>Schoenus lepidosperma</i> subsp. <i>pachylepis</i>
<i>Schoenus paludosus</i>	<i>Selaginella uliginosa</i>
<i>Sowerbaea juncea</i>	<i>Sphaerolobium vimineum</i>
<i>Sprengelia incarnata</i>	<i>Stackhousia nuda</i>
<i>Stylidium lineare</i>	<i>Symphionema paludosum</i>
<i>Tetraria capillaris</i>	<i>Tetrarrhena turfosa</i>
<i>Thysanotus juncifolius</i>	<i>Viminaria juncea</i>
<i>Xanthorrhoea resinosa</i>	<i>Xanthosia tridentata</i>
<i>Xyris gracilis</i> subsp. <i>laxa</i>	<i>Xyris juncea</i>
<i>Xyris operculata</i>	
- The total species list of the community is larger than that given above, with many species present in only one or two sites or in low abundance. Keith & Myerscough (1993) recorded more than 170 vascular plant species in Coastal Upland Swamp within O'Hares Creek catchment alone, with the total vascular flora of the community likely to exceed 200 species. The species composition of a site will be influenced by the size of the site, recent rainfall or drought conditions and by its disturbance (including grazing, land clearing and fire) history. The number and relative abundance of species

will change with time since fire, and may also change in response to changes in fire frequency, hydrological or grazing regimes. At any one time, above-ground individuals of some species may be absent, but the species may be represented below ground in soil seed banks or as dormant structures such as bulbs, corms, rhizomes, rootstocks or lignotubers. The list of species given above is of vascular plant species, however the community also includes micro-organisms, fungi, cryptogamic plants and a diverse fauna, both vertebrate and invertebrate.

4. Coastal Upland Swamp in the Sydney Basin Bioregion is characterised by highly diverse and variable mosaics of vegetation related to variability in soil conditions and fire regimes. A number of studies (Buchanan 1980; Keith & Myerscough 1993; NPWS 2003) have recognised several sub-communities within the Coastal Upland Swamp community. Larger swamps of the community are characterised by distinctive mosaics of multiple sub-communities that may include a range of structural forms including tall open scrubs, tall closed scrubs, closed heaths, open graminoid heaths, sedgelands and fernlands. Smaller swamps are more typically characterised by open graminoid heaths and/or sedgelands, but may include tall scrubs. Trees are typically absent from the community, but may be present as scattered individuals or clumps of mallee or arborescent eucalypts.
5. The most waterlogged zones of the larger swamps have deep peaty, gleyed soils and tend to be dominated by various combinations of *Leptospermum juniperinum*, *L. grandifolium*, *Melaleuca squarrosa*, *Banksia robur* and *Epacris paludosa*, often with a dense layer of *Gleichenia* spp. and/or sedges including *Gahnia sieberiana*, *Baumea teretifolia*, *Chorizandra sphaerocephala* and *Empodisma minus*, and the grass *Tetrarrhena turfosa*. In some locations the woody species are sparse and the vegetation comprises ferns and sedges. In zones where the water table is less frequently sustained near the surface, the peaty soil horizon is shallower, with more mineral content, and the vegetation is more typically an open graminoid heath dominated by an open layer of shrubs that may include *Banksia robur*, *Leptospermum juniperinum*, *Almaleea paludosa* and/or *Hakea teretifolia*, sometimes with *Banksia ericifolia*. A dense matrix between the shrubs is dominated by large cyperaceous sedges that may include *Lepidosperma limicola*, *Chorizandra sphaerocephala*, *Baumea teretifolia*, *Gymnoschoenus sphaerocephalus* and *Schoenus brevifolius*, and the woody non-arborescent grass tree *Xanthorrhoea resinosa*. Smaller sedges, cord rushes, such as *Empodisma minus*, *Lepyrodia scariosa* and *Leptocarpus tenax*, grasses, *Entolasia stricta* and *Tetrarrhena turfosa*, and forbs including *Xyris operculata*, may also be present in variable abundance. The vegetation of the least frequently waterlogged zone is highly variable depending on subtle soil characteristics and fire history. These zones tend to dominate smaller swamps and the periphery of larger swamps. The soils are predominantly mineral, with variable proportions of quartz sand grains and clay, depending on parent material, usually with humic staining near the surface, and bedrock at variable depth. The vegetation may include several sub-communities, including highly species-rich open graminoid heath, sedgeland and tall scrub. Patches of open heath are often dominated by *Banksia oblongifolia*, *B. paludosa* and/or *Hakea teretifolia* with a wide range of other shrubs including *Bauera microphylla*, *Dillwynia floribunda*, *Epacris obtusifolia*, *Xanthorrhoea resinosa* and *Grevillea oleoides*. The matrix between shrubs comprises a variety of small sedges, cord rushes, ferns and forbs, including *Ptilothrix deusta*, *Lepidosperma neesii*, *Schoenus brevifolius*, *Lepyrodia scariosa*, *Leptocarpus tenax*, *Entolasia stricta*, *Plinthanthesis paradoxa*, *Lindsaea linearis*, *Dampiera stricta*, *Goodenia dimorpha*, *Mitrasame polymorpha*, *Burchardia umbellata*, *Sowerbaea juncea*, *Cassytha glabella*, *Gonocarpus* spp. and *Drosera* spp. In some patches larger shrubs are sparse or absent and the vegetation is characterised by smaller shrubs such as *Baeckea imbricata*, *Epacris obtusifolia* and *Sprengelia incarnata* with smaller sedges, cord rushes, grasses and forbs, notably *Schoenus paludosus*, *Lepidosperma filiforme*, *Boronia parviflora* and *Symphionema paludosum*. Depending on fire history and seed dispersal, some patches in the less frequently waterlogged zones may develop into dense thickets dominated by tall shrubs including *Banksia ericifolia*, *Hakea teretifolia* and *Leptospermum squarrosum*. As these thickets develop with time since fire the layers of smaller shrubs and sedges tend to become sparser and less diverse (Keith & Bradstock 1994; Keith *et al.* 2007). Boundaries between Coastal Upland Swamp and adjacent communities may be quite distinct across distances of a few metres or more diffuse transitions across tens of metres, and may not follow treelines precisely (D. Keith pers comm. 2011).
6. Coastal Upland Swamp in the Sydney Basin Bioregion provides habitat to a wide variety of birds, mammals, amphibians, reptiles and invertebrate species. Some typical mammal and bird species include the swamp wallaby (*Wallabia bicolor*), Brown Antechinus (*Antechinus stuartii*), Swamp Rat (*Rattus lutreolus*), New Holland Honeyeater (*Phylidonyris novaehollandiae*), Southern Emu-wren (*Stipiturus malachrus*), Grey Fantail (*Rhipidura albiscapa*) and Beautiful Firetail (*Stagonopleura bella*). The Australian Crayfish (*Euastacus australasiensis*), the Hairy Crayfish (*E. hirsutus*) and the Sydney Crayfish (*E. spinifer*) are abundant and distinctive inhabitants of Coastal Upland Swamp. Stygofauna within the groundwater are abundant and comprise relatively few co-occurring species, but these exhibit high levels of local endemism (Hose 2008, 2009). Threatened species that have been recorded in the community include the Vulnerable *Pultenaea aristata*, Giant Burrowing Frog (*Heleioporus australiacus*), Red-crowned Toadlet (*Pseudophryne australis*), Rosenberg's Goanna (*Varanus rosenbergi*) and the Endangered Green and Golden Bell Frog (*Litoria aurea*). The Eastern Ground Parrot (*Pezoporus wallicus wallicus*) was once common on Maddens Plains and was thought to be locally extinct until recently rediscovered within upland swamp landscapes of Woronora River catchment. The community also provides habitat for the Endangered Giant Dragonfly (*Petalura gigantea*), which is now very uncommon in coastal regions.
7. Coastal Upland Swamp in the Sydney Basin bioregion includes: 'Sedge swamps' and 'Shrub swamps' of Pidgeon (1938); 'Extensive Swamp or Moor Communities' of Davis (1941); 'Swamps' of Buchanan (1980); 'Sedgeland' (Community 12) of Benson & Fallding (1981); 'Sedgeland/Shrubland' (Community 21) of Thomas & Benson (1985) [reproduced in Benson & Howell (1994)]; 'Open-scrub (Community 4a), 'Open-heath' (community 4b) and 'Sedgeland' (Community 5) of Fallding & Benson (1985); 'Ti-tree Thicket' (TT), 'Cyperoid Heath' (CH), 'Restioid Heath' (RH), 'Sedgeland' (SL) and 'Banksia Thicket' (BT) of Keith & Myerscough (1993) and Keith (1994); Upland Swamps

Banksia Thicket (MU42), Upland Swamps Tea-tree Thicket (MU43) and Upland Swamps Sedgeland-Heath Complex (MU44) of NPWS (2003); 'Sydney Hinterland Sandstone Upland Swamp' (MU43) of DECC (2008a); 'Coastal Upland Damp Heath Swamp' (map unit S\_FrW01) and 'Coastal Upland Wet Heath Swamp' (map unit S\_FrW02) of DECCW (2009); 'Coastal Upland Swamp' (map unit FrWp129) and parts of 'Blue Mountains - Shoalhaven Hanging Swamps' (map unit FrWp130) of Tozer *et al.* (2010). These latter two units tend to intergrade on the Woronora Plateau (Tozer *et al.* 2010), with overall floristic differences relating to increasing plant diversity as altitude declines and some local endemism in the upper altitudinal range of Blue Mountains - Shoalhaven Hanging Swamps (FrW p130). Various other published and unpublished studies have also recognised Coastal Upland Swamp as a distinctive community.

8. Related ecological communities currently listed under the Threatened Species Conservation Act 1995 include Blue Mountains Swamps in the Sydney Basin Bioregion (Vulnerable), Newnes Plateau Shrub Swamp in the Sydney Basin Bioregion (Endangered) and Montane Peatlands and Swamps of the New England Tableland, NSW North Coast, Sydney Basin, South East Corner, South Eastern Highlands and Australian Alps bioregions (Endangered). All three communities are types of upland swamp. Blue Mountains Swamps and Newnes Plateau Shrub Swamp share some plant species with Coastal Upland Swamp, and are also found in headwaters of streams on Sydney sandstone plateaus (although both occur primarily on sandstones of the Narrabeen Group cf. Hawkesbury Formation). Coastal Upland Swamp usually contains a much higher diversity of plant species than these other communities (Keith & Myerscough 1993) and therefore many of its dominant and less common species are not found in either Blue Mountains Swamps or Newnes Plateau Shrub Swamp (e.g. *Banksia robur*, *B. oblongifolia*, *Grevillea parviflora*, *Pultenaea aristata*, etc.). Montane Peatlands and Swamps share some geomorphic and hydrological characteristics but relatively few species in common with Coastal Upland Swamp. The former are found on more fertile non-sandstone substrates, generally in cooler climatic environments, and lack many of the sclerophyllous floristic components which characterise the other three swamp communities.
9. Coastal Upland Swamp in the Sydney Basin Bioregion occurs primarily on impermeable sandstone plateaus in the headwater valleys of streams and on sandstone benches with abundant seepage moisture (Buchanan 1980; Young 1986; Keith & Myerscough 1993; Keith *et al.* 2006). Buchanan (1980) described three physiographic types: valley-floor swamps; valley-side swamps and composite swamps. Occasionally they may be associated with weathered shale lenses and ironstone (Buchanan 1980; Keith 1994) and there are uncommon examples along the lower reaches of some streams, for example tributaries of Marley Lagoon in Royal National Park. Elevation varies from about 20 m to over 600 m above sea level, although the majority of swamps occur within 200 – 450 m elevation.
10. There are strong hydrological controls on the local and regional distribution of the Coastal Upland Swamp. Its development is driven by positive feedbacks that operate when there is a substantial excess of precipitation over evaporation which promotes soil waterlogging in tandem with high run-on from their catchments and low rates of percolation and run-off (Young 1982, 1986). Lateral transportation and deposition of sediment by overland flow leads to choking of headwater valleys, impeding drainage. Higher levels of soil moisture lead to increased density of ground vegetation, trapping more sediment, further impeding drainage and killing trees, which are unable to tolerate raised water tables. Recurrent fires may further accelerate loss of trees and hydrological change, as these affect both the survival of existing trees and recruitment of new trees depending on soil moisture conditions soon after fires occur (Keith *et al.* 2006). Substantial shifts may occur in the boundaries between swamps and adjoining woodlands over decadal time scales (Keith *et al.* 2010). The loss of trees reduces the transpiration capacity of the vegetation, allowing the water table to rise to the surface more frequently than it would if trees were actively extracting groundwater (Keith *et al.* 2006). Recruitment of trees results in the opposite effect on the water table. While low surface gradients influence the moisture budget through slow rates of run-off, the swamps occasionally occur on steeper slopes where highly impermeable sandstone strata bring a large excess of seepage moisture to the surface where they outcrop on valley sides.
11. Regionally, the distribution of Coastal Upland Swamp in the Sydney Basin Bioregion shows a strong relationship to climatic gradients. The community reaches its greatest development on the central eastern portion of the Woronora plateau, which also represents the greatest extent and one of the oldest recorded occurrences of upland wetlands on the Australian mainland (Keith *et al.* 2006). Here, the Illawarra escarpment produces orographic rainfall and fogs, as well as enhanced cloud cover, which reduces evaporation. Gentle topographic gradients in this area, combined with the impermeable sandstone substrate, further promote surface waterlogging and swamp development. The orographic climatic effects diminish rapidly with distance inland from the escarpment, such that occurrence of swamps is rare on the western third of the plateau. Swamps become very restricted in areas receiving less than 950 mm mean annual rainfall, with limited occurrences in drier areas mediated by the balance between rainfall and evapotranspiration, surface slope, substrate permeability and seepage moisture. On the northern side of Sydney, highly restricted examples of upland swamp vegetation occur on the Hornsby Plateau on the Lambert Peninsula and around Calga-Kariong, extending as far west as the Great North Road in Yengo National Park (DECC 2008a).
12. Coastal Upland Swamp in the Sydney Basin Bioregion is endemic to NSW within the eastern Sydney Basin from the Somersby district in the north to the Robertson district in the south. The distribution is divided into two portions separated by an area of less elevated terrain, lower rainfall, non-sandstone substrates and urban development in the eastern Sydney metropolitan area. In the north, the community occurs on the Somersby-Hornsby plateaus, in the south it occurs on Woronora plateau. It is currently known from the local government areas of Campbelltown, Gosford, Hornsby, Ku-ring-gai, Lane Cove, Manly, Pittwater, Sutherland, Warringah, Wingecarribee, Wollondilly, Wollongong and Wyong, but may occur elsewhere within the bioregion.

13. Examples of Coastal Upland Swamp in the Sydney Basin Bioregion are represented within Brisbane Water, Garigal, Heathcote, Ku-ring-gai Chase, Lane Cove, Popran, Sydney Harbour, Royal and Yengo National Parks, Dharawal and Muogamarra Nature Reserves, and Dharawal and Garawarra State Conservation Areas. Many of these reserves contain only a few hectares of the community.
14. Approximately 5360 ha of Coastal Upland Swamp in the Sydney Basin Bioregion have been mapped based on an amalgamation of best available regional vegetation mapping throughout the range of the community (NPWS 2000, DECCW 2009, Tozer *et al.* 2010). Approximately 83% of this area occurs on the Woronora Plateau. The size of mapped swamps is highly skewed, with the largest 5% of swamps (>14 ha) accounting for just less than half (47%) of the total area of the community. Large swamps also contribute disproportionately to species diversity and hydrological function, due to their large volumes of peaty sediments that contribute sustained high-quality flows to discharge streams and their diverse array of habitat mosaics that encompass suitable conditions for a wide array of species.
15. Based on a 2 x 2 km grid, the spatial scale recommended by IUCN (2010) for assessing species' areas of occupancy, the area of occupancy of Coastal Upland Swamp is estimated to be approximately 1140 [1100-1200] km<sup>2</sup>. Based on a minimum convex polygon enclosing all mapped occurrences of the community, its extent of occurrence is estimated to be 4960 [4730-5200] km<sup>2</sup>. The estimated extent of occurrence for Coastal Upland Swamp is consistent with a highly restricted distribution.
16. Areas of Coastal Upland Swamp in the Sydney Basin Bioregion destroyed by clearing are likely to account for up to 10% of the historical extent of the community, although precise estimates of the reduction are currently unavailable. These areas include swamps cleared during construction of freeways, access roads, railway easements and fire trails, clay and sand quarries, surface facilities associated with underground mines, coal refuse emplacements, recreational facilities such as golf courses, and some early agricultural enterprises. Most of this habitat loss occurred after 1970 (Keith *in litt.* 2010). The scope for future habitat loss due to clearing is limited, as much of the remaining distribution is on public land managed by Sydney Catchment Authority and the National Parks and Wildlife Service. However, on unprotected tenures there remains a localised risk of clearing associated with rural and residential development, quarrying of clay and sand and specialised facilities such as rifle ranges. Future habitat loss may also be associated with specific developments involving transport, energy or water supply infrastructure and surface facilities associated with underground mining, which are sometimes permitted on protected tenures. Disturbances associated with earthworks within swamps or their catchments, such as changes to drainage, sedimentation and weed invasion, may also affect localised areas of the community. 'Clearing of native vegetation' is listed as a Key Threatening Process under the Threatened Species Conservation Act 1995.
17. Three strands of evidence suggest that the distribution of Coastal Upland Swamp in the Sydney Basin Bioregion is highly sensitive to changes in climatic moisture. Firstly, there is a lack of evidence that upland swamps existed in the region under drier climates that prevailed prior to the late Pleistocene era (Young 1986; Kodela & Dodson 1989). Secondly, there are strong contemporary spatial relationships between the distribution of swamps and perched aquifers that underpin local soil moisture gradients (Young 1982; Keith & Myerscough 1993), as well as regional gradients of precipitation and evapotranspiration (Young 1986; Keith *et al.* 2010). Thirdly, swamp-woodland boundaries shift markedly in response to variation in climatic moisture, possibly in concert with fire events, over decadal time scales (Keith *et al.* 2010). A range of greenhouse gas emission scenarios suggest that during the 21st century the climate within the distribution of Coastal Upland Swamps will become warmer and drier, with a greater proportion of rain falling during summer (Hennessy *et al.* 2004; DECC 2008b; Pitman & Perkins 2008). Regional projections also suggest an increase in the frequency of extreme fire weather, suggesting that fires may become more frequent and more intense. Under these conditions the distribution of suitable habitat for Coastal Upland Swamps is projected to contract (Keith *et al.* 2010) and some ecological and hydrological functions may be expected to decline. Modelling suggests that a decline of around 70% is likely in the next 50 years based on future climate scenarios (Keith *et al.* 2011), which represents a large reduction in geographic distribution. 'Anthropogenic climate change' is listed as a Key Threatening Process under the Threatened Species Conservation Act 1995.
18. Subsidence and warping of the land surface associated with longwall mining of underground coal seams potentially changes hydrological processes involving both ground water and surface water. Longwall mining results in fracturing of bedrock layers between the coal seam and the surface, as well as subsidence, upsidence, tilting and buckling of the ground surface and valley closure (Department of Planning 2008). Horizontal and vertical displacements may occur up to 1-3 km outside the footprint of the mine workings (ACARP 2001, 2002) and may continue several years after seam extraction, although most movement occurs soon afterwards (Holla & Barclay 2000). There are two general mechanisms by which these movements may cause changes in the hydrology of upland swamps (Booth 2006; NSW PAC 2009): i) water drains into cracks in the bedrock that open beneath or upslope of the swamp as a result of simple tensile strains or complex buckling and shear that enhances connectivity of fractures; and ii) tilting of the surface results in re-distribution of overland flows, loss of water from swamp margins and/or concentration and channelisation of runoff. Specific hydrological impacts may include: desiccation indicated by decline of piezometric levels; reduction of baseflow discharge to streams; alteration of groundwater flow patterns; water quality changes including unconfinement of confined aquifers, accelerated leaching of iron; and leakage of upper aquifers to lower aquifers (Booth 2002, 2006, 2007; Booth *et al.* 1998; Madden & Merrick 2009; Madden & Ross 2009). Impacts of longwall mining on Coastal Upland Swamp are difficult to predict and detect due to non-linearities and complex dependencies on geological features and mine characteristics, time lags in hydrological and ecological responses and stochastic influences such as rainfall variation during and after subsidence. The latter can be crucial to erosion outcomes (Young 1982; Krogh 2007). Adjustment of the swamp biota to new hydrological regimes may involve considerable ecological lags and potential

interactions with climatic conditions, as well as fire regimes, which govern life-cycle processes in a wide range of species. Thus changes in species composition resulting from subsidence may not be fully evident until multiple fire cycles after the completion of mining operations. The risks of subsidence impacts on swamps are related to mine layout and design characteristics, including panel width, panel height, pillar width, depth of mining operations, as well as the structure of geological strata (including faults and joints), and surface topography (Krogh 2007). The NSW Planning and Assessment Commission (2010) defined thresholds for geological strains, tilt, valley closure and relative depth of cover that should be used to identify risks of negative environmental consequences on Coastal Upland Swamp. Large swamps, those that contribute most to biodiversity and hydrological function, are likely to be more susceptible to these impacts than smaller swamps because they usually span two or more longwall panels and are consequently exposed to greater tensile and compressive strains, increasing the risk of bedrock fracture and tilting. The impacts of mine subsidence include gradual or rapid drying of swamp soils, decline of the most groundwater-dependent plant species and consequent changes in vegetation structure, decline of groundwater-dependent fauna including macro-invertebrates and stygofauna, channelisation and consequent erosion of swamp sediments, oxidation of peaty sediments resulting in increased hydrophobicity and flammability. Although a systematic regional analysis of subsidence parameters and impacts on uplands swamps is lacking, a number of examples of these subsidence impacts have been documented. These include: knickpoint formation that led to extensive gullying and collapse of Drillhole Swamp (Young 1982; Tompkins & Humphries 2006); reduced groundwater levels and moisture content following cracking of the impervious sandstone base rock beneath swamps 18 and 19 in the Avon catchment (Gibbins 2003); significant scouring and gullying when severe fire and intense storms followed desiccation of swamps in the Upper Avon and Cordeaux catchment areas (Krogh 2004), although gullying in swamps can occur independently of mining (Tompkins & Humphries 2006); apparent changes in swamp bed gradients and altered flow paths associated with fracturing and tilting of bedrock beneath Flatrock Swamp in the Woronora catchment (Krogh 2004; Mills & Huuskes 2004); and bedrock fracturing followed by loss of groundwater in Dendrobium Swamp 1 in the Cordeaux catchment area (BHPBIC 2009). There is evidence of subsidence occurring in and around coastal upland swamps (Horsley & Brassington 2004; Tompkins & Humphries 2006; BIOSIS 2011). The impact of subsidence effects on species composition and structure within a limited sample of coastal upland swamp vegetation has been suggested to be negligible (Richardson & Ryan 2007; BIOSIS 2011). However, current data are too limited in sampling extent and duration to draw broad conclusions on these impacts. Krogh (2007) concluded that there is an increasing frequency of severe fracturing of surface strata, watercourses and beds of swamps as a result of longwall mining operations in the southern coalfields of New South Wales. More recent mine designs tend to involve greater panel widths, which are likely to be associated with higher subsidence impacts. Almost all Coastal Upland Swamps on the Woronora plateau are subject to existing underground mining leases (Krogh 2007). While some swamps are represented within statutory conservation reserves, these generally have depth restrictions above the coal seams that do not preclude underground mining operations. 'Alteration of habitat following subsidence due to longwall mining' and 'Alteration to the natural flow regimes of rivers, streams, floodplains and wetlands' are listed as Key Threatening Processes under the Threatened Species Conservation Act 1995.

19. Exploration and extraction of coal seam gas poses a future threat to Coastal Upland Swamp, as these activities are likely to involve many of the impacts described above for longwall mining. In addition, gas extraction may require dewatering of the coal seams and/or injection of fluids to fracture the coal seam and promote gas liberation/drainage. As well, coal seam gas extraction will result in access roads, localised clearing for drilling and holding dams or containers for extracted water, all of which may impact on coastal upland swamps. Sutherland *et al.* (2011) identified hydraulic fracturing as one of 15 emerging global threats to biodiversity. Significant environmental impacts on hydrological and ecological functions of Coastal Upland Swamp may occur if toxic injection fluids or saline/alkaline coal seam water find their way into the swamps and associated streams. Exploration of coal seam gas beneath the Woronora plateau is currently underway (e.g. Olsen Consulting Group 2009).
20. Several different fire regimes threaten the diversity of flora and fauna within Coastal Upland Swamp in the Sydney Basin Bioregion. These include regimes that involve substrate fires, recurring short intervals or long intervals. Under extreme fire weather conditions the peaty substrate that accumulates in wetter parts of Coastal Upland Swamp is flammable, especially when antecedent weather conditions result in low water table levels. Combustion results in consumption of the peaty substrate and mortality of soil seedbanks and fauna, lignotubers, rhizomes and other underground organs that would otherwise survive surface and canopy fires. Substrate fires are extremely difficult to extinguish and their effects may be long-lasting as rates of sediment accumulation and peat formation are slow. Disruption of the peaty substrate and its root mat can act as nick-points for channelisation of overland and subsurface flow, resulting in extensive erosion beyond the immediate area of substrate consumption. Erosive impacts may be amplified when substrate fires are followed by intense rainfall events, resulting in the flushing of large areas of swamp sediments and vegetation from headwater valleys. Intense rainfall events are not infrequent within the distribution of Coastal Upland Swamp, and examples of substrate combustion and subsequent sediment flushing were observed in swamps on the northern Woronora plateau after severe fires were followed by intense rainfall events in summer of 2001-02 (Krogh *in litt.* December 2010). An increased frequency of extreme fire weather projected for south-eastern Australia in the 21<sup>st</sup> century (Lucas *et al.* 2007) is likely to promote the risk of more frequent and more extensive substrate fires.
21. High frequency fires threaten populations of some plant species in Coastal Upland Swamp. Among the most susceptible species are a group of serotinous obligate seeders, often structurally dominant species, (*Banksia ericifolia*, *Hakea teretifolia*, *Leptospermum squarrosus*, *Melaleuca squamea* and *Petrophile pulchella*) in which post-fire seedbank accumulation may be interrupted by fire recurrence resulting in population declines and local extinctions (Bradstock & O'Connell 1988) in Coastal Upland Swamp. Of these, *M. squamea* is already rare within the community and *B. ericifolia* is an important winter food source for a range of vertebrate fauna, suggesting that fire-related declines in



those plants may adversely affect populations of some animals. A range of other woody species may also be susceptible to high frequency fires over longer time scales (Keith 1996). 'High frequency fire resulting in the disruption of life cycle processes in plants and animals and loss of vegetation structure and composition' is listed as a Key Threatening Process under the Threatened Species Conservation Act 1995.

22. Fire regimes that include sustained recurrence of medium to long intervals between successive fires are also likely to threaten a significant component of the Coastal Upland Swamp flora. Such fire regimes promote development of dense populations of the competitive dominants of the community which, if sustained, are likely to cause declines and potential elimination of co-occurring plant species (Keith & Bradstock 1994; Keith *et al.* 2007). There is strong evidence from swamps in O'Hares Creek catchment during 1983-2003 that increased densities of the dominant shrubs co-occurred with declines in certain understorey plants, consistent with expectations under fire regimes that were close to optimal for the dominants during that period (Keith *et al.* 2007). The most susceptible species were woody resprouters and some herbaceous resprouters.
23. Localised disturbance associated with unauthorised use of off-road vehicles, trail bikes and horses may cause localised erosion and weed invasion within Coastal Upland Swamp in the Sydney Basin bioregion. As discussed above, localised erosion may result in development of knick points that initiate more widespread erosion of swamp sediments, and these effects may be exacerbated by bushfires and/or intense rainfall events.
24. Coastal Upland Swamp in the Sydney Basin Bioregion is not eligible to be listed as a Critically Endangered Ecological Community.
25. Coastal Upland Swamp in the Sydney Basin Bioregion is eligible to be listed as an Endangered Ecological Community as, in the opinion of the Scientific Committee, it is facing a very high risk of extinction in New South Wales in the near future, as determined in accordance with the following criteria as prescribed by the Threatened Species Conservation Regulation 2010:

**Clause 17 Reduction in geographic distribution of ecological community**

The ecological community has undergone, is observed, estimated, inferred or reasonably suspected to have undergone or is likely to undergo within a time span appropriate to the life cycle and habitat characteristics of its component species:

- (b) a large reduction in geographic distribution.

**Clause 18 Restricted geographic distribution of ecological community**

The ecological community's geographic distribution is estimated or inferred to be:

- (b) highly restricted,

and the nature of its distribution makes it likely that the action of a threatening process could cause it to decline or degrade in extent or ecological function over a time span appropriate to the life cycle and habitat characteristics of the ecological community's component species.

**Clause 19 Reduction in ecological function of ecological community**

The ecological community has undergone, is observed, estimated, inferred or reasonably suspected to have undergone or is likely to undergo within a time span appropriate to the life cycle and habitat characteristics of its component species:

- (b) a large reduction in ecological function,

as indicated by any of the following:

- (d) change in community structure,
- (e) change in species composition,
- (f) disruption of ecological processes,
- (h) degradation of habitat,
- (i) fragmentation of habitat.

Dr RICHARD MAJOR,  
Chairperson,  
Scientific Committee

**References:**

- ACARP (2001) 'Impacts of mine subsidence on the strata and hydrology of river valleys – Management Guidelines for undermining cliffs, gorges and river systems. Final Report C8005 Stage 1.' Australian Coal Association Research Program, Brisbane.
- ACARP (2002) 'Impacts of mine subsidence on the strata and hydrology of river valleys – Management Guidelines for undermining cliffs, gorges and river systems. Final Report C9067 Stage 2.' Australian Coal Association Research Program, Brisbane.
- Benson D, Howell J (1994) The natural vegetation of the Sydney 1:100 000 map sheet. *Cunninghamia* **3**, 677-787.
- Benson JS, Fallding H (1981) Vegetation survey of Brisbane Water National Park and environs. *Cunninghamia* **1**, 79-113.
- BHPBIC (2009) 'Dendrobium Area 2 Longwall 4 Swamp 1 Update Report: 7 April 2009.' BHP Billiton Illawarra Coal Report, Wollongong.

- BIOSIS (2011) 'Dendrobium Colliery Ecological Monitoring Program. Annual monitoring report 2009/2010.' BIOSIS RESEARCH Pty. Ltd.
- Booth CJ (2002) The effects of longwall mining on overlying aquifers. In 'Geological Society Special Publications vol. 198: Mine Water Hydrogeology and Geochemistry'. (Eds PL Younger and NS Robins) pp. 17-45 (Geological Society: London)
- Booth CJ (2006) Groundwater as an environmental constraint of longwall coal mining. *Environmental Geology* **49**, 796-803.
- Booth CJ (2007) Confined-unconfined changes above longwall coal mining due to increases in fracture porosity. *Environmental & Engineering Geoscience* **13**, 355-367.
- Booth CJ, Spande ED, Pattee CT, Miller JD, Bertsch LP (1998) Positive and negative impacts of longwall mine subsidence on a sandstone aquifer. *Environmental Geology* **34**, 223-233.
- Bradstock RA, O'Connell MA (1988) Demography of woody-plants in relation to fire – *Banksia ericifolia* Lf. and *Petrophile pulchella* (Schrader) R.Br. *Australian Journal of Ecology* **13**, 505-518.
- Buchanan RA (1980) The Lambert Peninsula, Ku-ring-gai Chase National Park, Physiography and the distribution of podzols, shrublands and swamps, with details of the swamp vegetation and sediments. *Proceedings of the Linnean Society New South Wales* **104**, 73-94.
- Davis C (1941) Plant ecology of the Bulli district II: Plant communities of the plateau and scarp. *Proceedings of the Linnean Society New South Wales* **66**, 1-19.
- DECC (2008a) 'The Native Vegetation of Yengo and Parr Reserves and Surrounds.' Department of Environment and Climate Change NSW, Hurstville.
- DECC (2008b) Summary of Climate Change Impacts Sydney Region. NSW Climate Change Action Plan. Department of Environment and Climate Change NSW, Sydney South.
- DECCW (2009) 'The Native Vegetation of the Sydney Metropolitan Catchment Management Authority Area.' Department of Environment, Climate Change and Water NSW, Hurstville.
- Department of Planning (2008) 'Impacts of Underground Coal Mining on Natural Features in the Southern Coalfield – Strategic Review.' New South Wales Government. ISBN 978 0 7347 5901 6.
- Fallding HB, Benson JS (1985) Natural vegetation and settlement at Macquarie Pass, Illawarra Region, New South Wales. *Cunninghamia* **1**, 285-311.
- Gibbins L (2003) A Geophysical Investigation of Two Upland Swamps, Woronora Plateau, NSW, Australia. Honours Thesis, Macquarie University.
- Hennessy K, McInnes K, Abbs D, Jones R, Bathols J, Suppiah R, Ricketts J, Rafter T, Collins D, Jones D (2004) 'Climate change in New South Wales. Part 2: Projected change in climate extremes.' CSIRO, Melbourne.
- Holla L, Barclay E (2000) 'Mine subsidence in the southern coalfield, NSW, Australia.' (Mineral Resources of NSW: Sydney).
- Horsley C, Brassington G (2004) Understanding upland swamps in the Illawarra. The relationship of swamps and subsidence. Proceedings of the Sixth Triennial Conference on Subsidence Management Issues, Maitland, pp.29-40.
- Hose G (2008) 'Stygofauna baseline assessment for Kangaloon borefield investigations – Southern Highlands, NSW.' Report to Sydney Catchment Authority. Access Macquarie Ltd, North Ryde.
- Hose G (2009) 'Stygofauna baseline assessment for Kangaloon borefield investigations – Southern Highlands, NSW. Supplementary report – stygofauna molecular studies.' Report to Sydney Catchment Authority. Access Macquarie Ltd, North Ryde.
- IUCN Standards and Petitions Subcommittee (2010) 'Guidelines for Using the IUCN Red List Categories and Criteria Version 8.1.' Prepared by the Standards and Petitions Subcommittee in March 2010.  
(<http://intranet.iucn.org/webfiles/doc/SSC/RedList/RedListGuidelines.pdf>)
- Keith DA (1994) Floristics, structure and diversity of natural vegetation in the O'Hares Creek catchment, south of Sydney. *Cunninghamia* **3**, 543-594.
- Keith DA (1996) Fire-driven mechanisms of extinction in vascular plants: a review of empirical and theoretical evidence in Australian vegetation. *Proceedings of the Linnean Society of New South Wales* **116**, 37-78.
- Keith DA, Bradstock RA (1994) Fire and competition in Australian heath: a conceptual model and field investigations. *Journal of Vegetation Science* **5**, 347-354.
- Keith DA, Elith JR, Simpson CC (2011) The response of coastal upland swamp habitat to climate change. Unpublished report to NSW Scientific Committee, March 2011.
- Keith DA, Holman L, Rodoreda S, Lemmon J, Bedward M (2007) Plant Functional Types can predict decade-scale changes in fire-prone vegetation. *Journal of Ecology* **95**, 1324-1337.
- Keith DA, Myerscough PJ (1993) Floristics and soil relations of upland swamp vegetation near Sydney. *Australian Journal of Ecology* **18**, 325-344.

- Keith DA, Rodoreda S, Bedward M (2010) Decadal change in wetland-woodland boundaries during the late 20<sup>th</sup> century reflects climatic trends. *Global Change Biology* **16**, 2300-2306.
- Keith DA, Rodoreda S, Holman L, Lemmon J (2006) 'Monitoring change in upland swamps in Sydney's water catchments: the roles of fire and rain.' Department of Environment and Conservation, Sydney.
- Kodala PG, Dodson JR (1989) A late Holocene vegetation and fire record from Ku-ring-gai Chase National Park, New South Wales. *Proceedings of the Linnean Society of New South Wales* **110**, 317-326.
- Krogh M (2004) 'Assessment of Potential Causes Underlying the Collapse of Flatrock Swamp.' Internal Sydney Catchment Authority Report.
- Krogh M (2007) Management of Longwall Coal Mining Impacts in Sydney's Southern Drinking Water Catchments. *Australasian Journal of Environmental Management* **14**, 155-165.
- Lucas C, Hennessy K, Mills G, Bathols J (2007) 'Bushfire weather in southeast Australia: recent trends and projected climate change impacts.' CSIRO, Melbourne.
- Madden A, Merrick NP (2009) Extent of longwall mining influence on deep groundwater overlying a Southern Coalfield mine. In 'IAH NSW, Groundwater in the Sydney Basin Symposium, Sydney, NSW, Australia, 4-5 Aug. 2009'. (Ed. WA Milne-Home) pp 176-186. ISBN 978 0 646 51709 4.
- Madden A, Ross JB (2009) Deep Groundwater Response to Longwall Mining, Southern Coalfield, New South Wales, Australia. In 'IAH NSW, Groundwater in the Sydney Basin Symposium, Sydney, NSW, Australia, 4-5 Aug. 2009'. (Ed. WA Milne-Home) pp 187-245. ISBN 978 0 646 51709 4.
- Mills KW, Huuskens W (2004) The effects of mining subsidence on rockbars in the Waratah Rivulet at Metropolitan Colliery. In 'The Proceedings of the 6th Triennial Conference on Mine Subsidence'. pp. 47-63. (Mine Subsidence Technological Society, Maitland).
- NPWS (2000) 'Vegetation Survey, Classification and Mapping: Lower Hunter and Central Coast Region. Version 1.2.' National Parks and Wildlife Service of NSW. Sydney.
- NPWS (2003) 'The native vegetation of the Woronora, O'Hares and Metropolitan catchments.' NSW National Parks and Wildlife Service, Sydney.
- NSW Planning Assessment Commission (2009) 'The Metropolitan Coal Project Review Report.' NSW Planning Assessment Commission, Sydney NSW Australia. ISBN 978-0-9806592-0-7.
- NSW Planning Assessment Commission (2010) 'Bulli Seam Planning Assessment Commission report.' NSW Planning Assessment Commission, Sydney NSW Australia. ISBN 978-0-9806592-6-9.
- Olsen Consulting Group (2009) 'Environmental Assessment Illawarra Coal Seam Gas Exploration Drilling & Gas Monitoring Program.' Olsen Consulting Group Pty Ltd.
- Pidgeon IM (1938) The ecology of the central coast area of New South Wales. II. Plant succession on the Hawkesbury sandstone. *Proceedings of the Linnean Society New South Wales* **63**, 1-26.
- Pitman AJ, Perkins SE (2008) Regional projections of future seasonal and annual changes in rainfall and temperature over Australia based on skill-selected AR4 models. *Earth Interactions* **12**, paper No. 12, 1-50.
- Richardson M, Ryan D (2007) The Ecology of Subsidence – Upland Swamps in the Southern Coalfield.
- Sutherland WJ, Bardsley S, Bennun L, Clout M, Côte' IM, Depledge MH, Dicks LV, Dobson AP, Fellman L, Fleishman E, Gibbons DW, Impey AJ, Lawton JH, Lickorish F, Lindenmayer DB, Lovejoy TE, Mac Nally R, Madgwick J, Peck LS, Pretty J, Prior SV, Redford KH, Scharlemann JPW, Spalding M, Watkinson AR (2011) Horizon scan of global conservation issues for 2011. *Trends in Ecology and Evolution* **26**, 10-16.
- Thackway R, Cresswell ID (1995) An interim biogeographic regionalisation for Australia: a framework for setting priorities in the National Reserves System Cooperative Program. (Version 4.0. Australian Nature Conservation Agency: Canberra.)
- Thomas J, Benson DH (1985) 'Vegetation survey of Ku-ring-gai Chase National Park.' Report to NSW National Parks and Wildlife Service. Royal Botanic Gardens, Sydney.
- Tompkins KM, Humphries GS (2006) 'Evaluating the effects of fire and other catastrophic events on sediment and nutrient transfer within SCA Special Areas. Technical Report 2: Upland swamp development and erosion on the Woronora Plateau during the Holocene.' Sydney Catchment Authority and Macquarie University Collaborative research project.
- Tozer MG, Turner K, Keith DA, Tindall D, Pennay C, Simpson C, MacKenzie B, Beukers P (2010) Native vegetation of southeast NSW: a revised classification and map for the coast and eastern tablelands. *Cunninghamia* **11**, 359-406.
- Young, ARM (1982) *Upland Swamps (Dells) on the Woronora Plateau, NSW*. PhD thesis, University of Wollongong, NSW.
- Young, ARM (1986) The geomorphic development of dells (upland swamps) on the Woronora plateau, N.S.W., Australia. *Zeitschrift fur Geomorphologie* **30**, 317-327.

**OFFICIAL NOTICES****Appointments****CENTENNIAL PARK AND MOORE PARK TRUST  
ACT 1983**

## Appointment of Trustees

HER Excellency the Governor, on the recommendation of the Minister and with the advice of the Executive Council, in pursuance to section 7 of the Centennial Park and Moore Park Trust Act 1983, has appointed the following persons as members of the Centennial Park and Moore Park Trust for a period of four years commencing 1 March 2012 to 29 February 2016:

Ms Ita BUTTROSE, A.O., O.B.E.,

Mr Lesli BERGER

Signed: 18 January 2012.

The Hon. ROBYN PARKER, M.P.,  
Minister for the Environment  
and Minister for Heritage

**CENTENNIAL PARK AND MOORE PARK TRUST  
ACT 1983**

## Appointment of Trustee

HER Excellency the Governor, with the advice of the Executive Council, pursuant to section 7 (1) (b) of the Centennial Park and Moore Park Trust Act 1983, has approved the following person being appointed as a Trustee of the Centennial Park and Moore Park Trust from 26 February 2012 to 25 February 2014:

Mr Giles A. EDMONDS

Signed: 22 February 2012.

The Hon. ROBYN PARKER, M.P.,  
Minister for the Environment  
and Minister for Heritage

# Department of Planning

## ENVIRONMENTAL PLANNING AND ASSESSMENT ACT 1979

### Order Declaring Development to be a Project Under Part 3A of the Environmental Planning and Assessment Act 1979 Amendment

I, the Executive Director, Major Projects Assessment, as delegate of the Minister for Planning and Infrastructure, pursuant to section 75B (5) of the Environmental Planning and Assessment Act 1979 (the Act), amend the project declaration made under section 75B of the Act on 7 September 2009 (GG No. 146 of 16 October 2009, p5426), by amending the developments described in Schedule 1 to that order, by replacing it with the developments described in Schedule 1 to this order.

In my opinion, the development referred to in Schedule 1 of this order is of State and regional environmental planning significance.

Dated: 29 February 2012.

CHRISTOPHER WILSON,  
Executive Director,  
Major Projects Assessment

### SCHEDULE 1

A proposal for the water and wastewater servicing of the West Dapto Urban Release Area and Adjacent Growth Areas comprising:

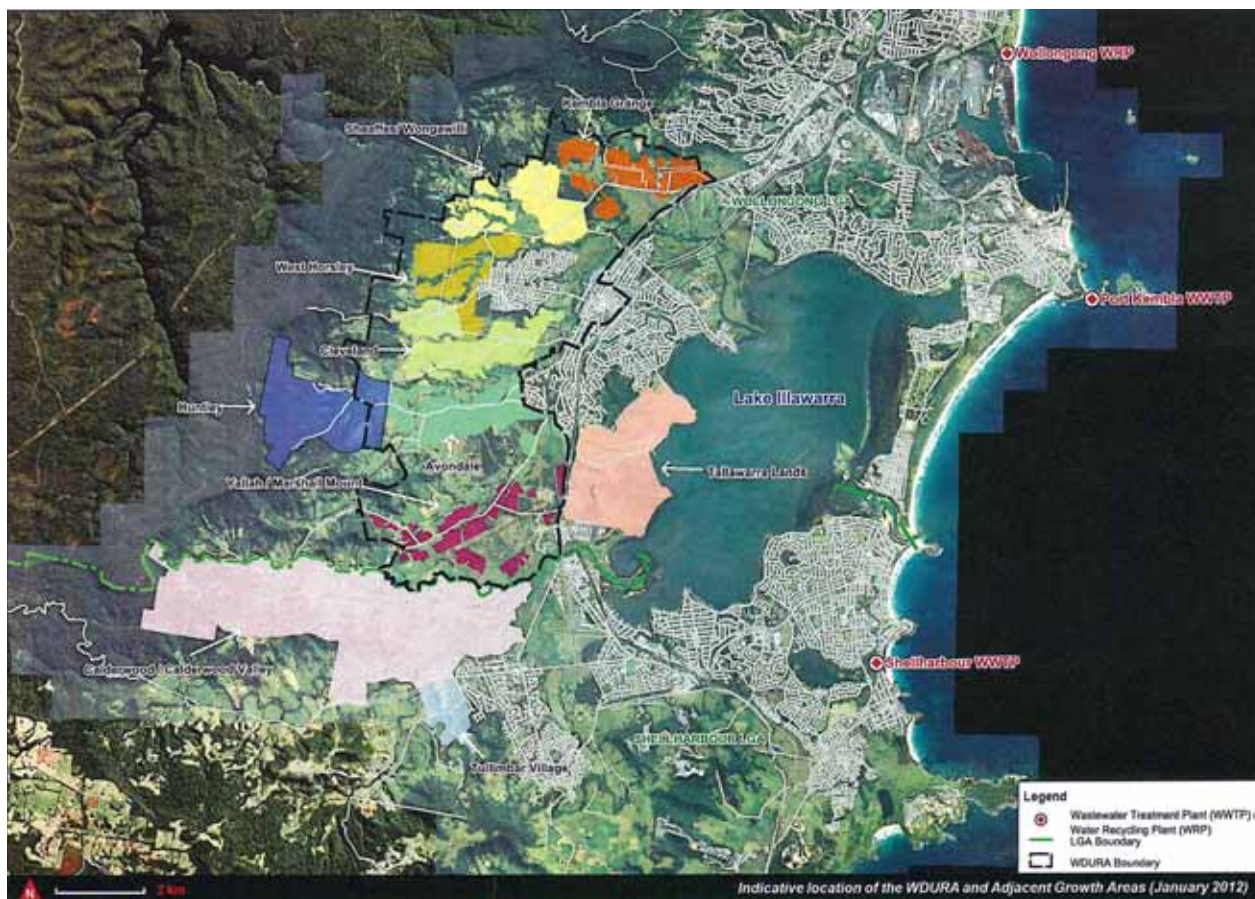
- the construction and operation of drinking water and wastewater pipelines, pumping stations, drinking water reservoirs and associated infrastructure; and
- upgrades to the Wollongong and Shellharbour sewage treatment plants.

The West Dapto Urban Release Area is generally defined as the suburbs of Kembla Grange, Sheaffes/Wongawilli, West Horsley, East Horsley, Cleveland, a portion of Huntley, Avondale, Yallah/Marshall Mount and the Dapto Sub Regional Centre.

The Adjacent Growth Areas are generally defined as a portion of Huntley, Tallawarra lands, Calderwood and Tullimbar Village.

As generally shown on the indicative map prepared by Sydney Water dated 23 January 2012 and titled Indicative location of WDURA and Adjacent Growth Areas (January 2012).

Note: The assessment of the project under Part 3A will include the consideration of one or more options for the alignment of the drinking water and wastewater pipelines and location of drinking water reservoirs.



## Roads and Maritime Services

### ROAD TRANSPORT (GENERAL) ACT 2005

Notice under Clause 20 of the Road Transport (Mass, Loading and Access) Regulation 2005

BALLINA SHIRE COUNCIL, in pursuance of Division 4 of Part 2 of the Road Transport (Mass, Loading, Access) Regulation 2005, by this Notice, specify the routes and areas on or in which 4.6 metre High Vehicles may be used subject to any requirements or conditions set out in the Schedule.

Dated: 1 March 2012.

JOHN TRUMAN,  
Group Manager,  
Civil Services,  
Ballina Shire Council  
(by delegation from the Minister for Roads)

#### SCHEDULE

**1. Citation**

This Notice may be cited as Ballina Shire Council 4.6 Metre High Vehicle Route Notice No. 01/2012.

**2. Commencement**

This Notice takes effect on the date of gazettal.

**3. Effect**

This Notice remains in force until 31 December 2012 unless it is amended or repealed earlier.

**4. Application**

This Notice applies to those 4.6 metre high vehicles which comply with Schedule 1 of the Road Transport (Mass, Loading and Access) Regulation 2005 and Schedule 2 of the Road Transport (Vehicle Registration) Regulation 2007.

**5. Routes**

<i>Type</i>	<i>Road Name</i>	<i>Starting Point</i>	<i>Finishing Point</i>
4.6.	Tamarind Drive Ballina.	Cumbalum Interchange (HW10).	Kerr Street.
4.6.	Kerr Street, Ballina.	Tamarind Drive.	River Street.
4.6.	River Street, Ballina.	Kerr Street Intersection.	Teven Road Interchange West.

**ROAD TRANSPORT (GENERAL) ACT 2005**

Notice under the Road Transport (Mass, Loading and Access) Regulation 2005

I, PETER DUNCAN, Chief Executive, Roads and Maritime Services, pursuant to Clause 20 of the Road Transport (Mass, Loading and Access) Regulation 2005, hereby amend the Class 2 Road Train Notice 2010, as published in the *New South Wales Government Gazette* No. 117 on 24 September 2010, at pages 4671 to 4718, as set out in the Schedule of this Notice.

PETER DUNCAN,  
Chief Executive,  
Roads and Maritime Services

---

**SCHEDULE**
**1. Citation**

This Notice may be cited as the Roads and Maritime Services Class 2 Road Train (Amendment) Notice No. 4/2011.

**2. Commencement**

This Notice takes effect on and from the date of publication in the *New South Wales Government Gazette*.

**3. Effect**

This Notice remains in force up to and including 30 September 2015 unless it is repealed earlier.

**4. Amendment**

Delete the following route from the table at Appendix 1, under the heading Part 1 – Approved 36.5 metre Road Train routes NSW Western Region.

<i>Type</i>	<i>Road No.</i>	<i>Road Name</i>	<i>Starting Point</i>	<i>Finishing Point</i>	<i>Conditions</i>
RT.	HW17.	Newell Highway, Dubbo.	HW27 Golden Highway, Dubbo.	Hargraves Lane, Gilgandra.	No access permitted between 7:30am to 9:00am and 3:30pm to 5:00pm on school days.

Insert the following routes into the table at Appendix 1, under the heading Part 1 – Approved 36.5 metre Road Train routes NSW Western Region.

<i>Type</i>	<i>Road No.</i>	<i>Road Name</i>	<i>Starting Point</i>	<i>Finishing Point</i>
RT.	HW17.	Newell Highway, Dubbo.	HW27 Golden Highway, Dubbo.	Hargraves Lane, Gilgandra.

**ROAD TRANSPORT (GENERAL) ACT 2005**

Notice under Clause 20 of the Road Transport (Mass, Loading and Access) Regulation 2005

PORT MACQUARIE-HASTINGS COUNCIL, in pursuance of Division 4 of Part 2 of the Road Transport (Mass, Loading, Access) Regulation 2005, by this Notice, specify the routes and areas on or in which 25 metre B-Doubles may be used subject to any requirements or conditions set out in the Schedule.

Dated: 2 March 2012.

TONY HAYWARD,  
General Manager,  
Port Macquarie-Hastings Council  
(by delegation from the Minister for Roads)

---

**SCHEDULE**
**1. Citation**

This Notice may be cited as Port Macquarie-Hastings Council 25 Metre B-Double Route Notice No. 1/2012.

**2. Commencement**

This Notice takes effect on the date of gazettal.

**3. Effect**

This Notice remains in force until 1 September 2015 unless it is amended or repealed earlier.

**4. Application**

This Notice applies to those 25 metre B-Double vehicles which comply with Schedule 1 of the Road Transport (Mass, Loading and Access) Regulation 2005 and Schedule 2 of the Road Transport (Vehicle Registration) Regulation 2007.

**5. Routes**

<i>Type</i>	<i>Road</i>	<i>Starting Point</i>	<i>Finishing Point</i>
25.	Jindalee Road.	Belah Road.	Comara Close.
25.	Jambali Road.	Jindalee Road.	Belah Road.



**ROAD TRANSPORT (GENERAL) ACT 2005**

Notice under the Road Transport (Mass, Loading and Access) Regulation 2005

PORT MACQUARIE-HASTINGS SHIRE COUNCIL, in pursuance of the Road Transport (Mass, Loading, Access) Regulation 2005, makes the amendment in the Schedule to the routes and areas previously specified on or in which B-Doubles may be used.

Dated: 2 March 2012.

TONY HAYWARD,  
General Manager,  
Port Macquarie-Hastings Shire Council  
(by delegation from the Minister for Roads)

---

**SCHEDULE**
**1. Citation**

This Notice may be cited as the Port Macquarie-Hastings Shire Council B-Doubles Repeal Notice No. 1/2012.

**2. Commencement**

This Notice takes effect on the date of gazettal.

**3. Amendment**

The General B-Double Permit Notice 2010 is amended by omitting the following from that Notice:

<i>Type</i>	<i>Road</i>	<i>Starting Point</i>	<i>Finishing Point</i>
25.	Jindalee Road.	Belah Road.	Small Road.
25.	Jambali Road.	Bolwarra Road.	Belah Road.

**ROADS ACT 1993****LAND ACQUISITION (JUST TERMS  
COMPENSATION) ACT 1991**

Notice of Compulsory Acquisition of Land at Sandy  
Beach in the Coffs Harbour City Council area

Roads and Maritime Services by its delegate declares, with the approval of Her Excellency the Governor, that the land described in the schedule below is acquired by compulsory process under the provisions of the Land Acquisition (Just Terms Compensation) Act 1991 for the purposes of the Roads Act 1993.

T D Craig  
Manager, Compulsory Acquisition & Road Dedication  
Roads and Maritime Services

---

**SCHEDULE**

ALL those pieces or parcels of land situated in the Coffs Harbour City Council area, Parish of Moonee and County of Fitzroy, shown as:

Lot 18 Deposited Plan 1169460, being part of the land in Certificate of Title 13/841652;

Lot 12 Deposited Plan 733077, being the whole of the land in Certificate of Title 12/733077; and

Lot 72 Deposited Plan 788215, being the whole of the land in Certificate of Title 72/788215;

excluding any existing easements from the compulsory acquisition of the land listed above.

The land is said to be in the possession of Coffs Harbour City Council.

ALSO ALL that piece or parcel of land situated in the Coffs Harbour City Council area, Parish of Moonee and County of Fitzroy, shown as Lot 25 Deposited Plan 1169460, being part of the land in Certificate of Title 1/248765.

The land is said to be in the possession of Roads and Maritime Services and Coffs Harbour City Council (which has care, control and management by a notice in Government Gazette No.26 of 27 February 1976 Folio 839).

(RMS Papers: 11M3355; RO 10/110.1863)

## ROADS ACT 1993

Notice of Dedication of Land as Public Road at Auburn and Lidcombe in the Auburn City Council area

Roads and Maritime Services, by its delegate, dedicates the land described in the schedule below as public road under section 10 of the Roads Act 1993.

T D Craig  
Manager, Compulsory Acquisition & Road Dedication  
Roads and Maritime Services

---

SCHEDULE

ALL those pieces or parcels of land situated in the Auburn City Council area, Parishes of St John and Liberty Plains and County of Cumberland, shown as:

<u>Description of Land</u>	<u>Title Particulars</u>
Lot 4 Deposited Plan 225360	Certificate of Title Volume 5402 Folio 49
Lot 3 Deposited Plan 225360	Certificate of Title Volume 5372 Folio 14
Lot 2 Deposited Plan 225360	Deed of Conveyance Book 2762 No 542
Lot 1 Deposited Plan 225360	Deed of Conveyance Book 2762 No 542
That part of Lot 1 Deposited Plan 966924 exclusive of that part of Lot 1 Deposited Plan 240642 within the said Lot 1 Deposited Plan 966924	Certificate of Title Volume 2203 Folio 44
That part of Lot 1 Deposited Plan 949896 exclusive of that part of Lot 1 Deposited Plan 240642 within the said Lot 1 Deposited Plan 949896	Certificate of Title Volume 5721 Folio 36
Lot 1 Deposited Plan 230017	Certificate of Title Volume 2249 Folio 11
Lot 3 Deposited Plan 230017	Certificate of Title Volume 2249 Folio 11
Lot 4 Deposited Plan 230017	Folio Identifier 1 / 938683
Lot 5 Deposited Plan 230017	Certificate of Title Volume 13720 Folio 177
Lot 6 Deposited Plan 230017	Certificate of Title Volume 2021 Folio 120
Lot 7 Deposited Plan 230017	Certificate of Title Volume 2506 Folio 169
Lot 8 Deposited Plan 230017	Certificate of Title Volume 2762 Folio 205
The area of 23.2m <sup>2</sup> shown on Plan marked 'A' annexed to memorandum of Transfer N363923, registered at Land and Property Information, being part of Lot 1 Deposited Plan 925459	Certificate of Title Volume 2385 Folio 41
Lot 11 Deposited Plan 240642 and that part of Lot 2 Deposited Plan 230017 exclusive of the area of 23.2 m <sup>2</sup> shown on Plan marked 'A' annexed to memorandum of Transfer N363923, registered at Land and Property Information, being also the whole of the land in Transfer T603678 also registered at Land and Property Information	Certificate of Title Volume 2385 Folio 41
Lot 10 Deposited Plan 240642	Certificate of Title Volume 2249 Folio 11
Lot 9 Deposited Plan 240642	Folio Identifier 1 / 938683
Lot 8 Deposited Plan 240642	Certificate of Title Volume 13720 Folio 177
Lot 7 Deposited Plan 240642	Certificate of Title Volume 2021 Folio 120
Lot 6 Deposited Plan 240642	Certificate of Title Volume 2506 Folio 169
Lot 5 Deposited Plan 240642	Certificate of Title Volume 2762 Folio 205
Lot 37 Deposited Plan 251167	Certificate of Title Volume 11442 Folio 132
Lot 32 Deposited Plan 251167	Certificate of Title Volume 11198 Folio 195
Lot 31 Deposited Plan 251167	Certificate of Title Volume 13816 Folio 25
Lot 30 Deposited Plan 251167	Certificate of Title Volume 9270 Folio 94
Lot 28 Deposited Plan 251167	Certificate of Title Volume 12836 Folio 216
Lot 27 Deposited Plan 251167	Certificate of Title Volume 11808 Folio 162
Lot 26 Deposited Plan 251167	Certificate of Title Volume 11808 Folio 162

*(Continued over page)*

(Schedule of land continued from previous page)

ALL those pieces or parcels of land situated in the Auburn City Council area, Parishes of St John and Liberty Plains and County of Cumberland, shown as:

<u>Description of Land</u>	<u>Title Particulars</u>
Lot 25 Deposited Plan 251167	Certificate of Title Volume 11643 Folio 41
Lot 24 Deposited Plan 251167	Certificate of Title Volume 9341 Folio 127
Lot 23 Deposited Plan 251167	Certificate of Title Volume 12499 Folio 197
Lot 34 Deposited Plan 251167	Certificate of Title Volume 12499 Folio 198
Lot 33 Deposited Plan 251167	Certificate of Title Volume 12373 Folio 87
That part of Lot 1 Deposited Plan 973570 exclusive of Lot 22 Deposited Plan 251167	Certificate of Title Volume 2301 Folio 148
Lot 12 Deposited Plan 804244	Folio Identifier 12 / 804244
Lot E Deposited Plan 900950 and that part of Lot D Deposited Plan 900950 exclusive of Lot 21 Deposited Plan 251167	Certificate of Title Volume 2248 Folio 186
Lot 25 Deposited Plan 249250	Certificate of Title Volume 6905 Folio 85
Lot 24 Deposited Plan 249250	Certificate of Title Volume 11994 Folio 92
Lot 23 Deposited Plan 249250	Certificate of Title Volume 13908 Folio 122
Lot 22 Deposited Plan 249250	Folio Identifier 22 / 249250
Lot 21 Deposited Plan 249250	Folio Identifier 21 / 249250
Lot 20 Deposited Plan 249250	Certificate of Title Volume 1438 Folio 27
Lot 19 Deposited Plan 249250	Certificate of Title Volume 9474 Folio 172
Lot 18 Deposited Plan 249250	Folio Identifier 18 / 249250
Lot 2 Deposited Plan 567953	Certificate of Title Volume 12418 Folio 87
Lot 20 Deposited Plan 252598	Folio Identifier 20 / 252598
Lot 19 Deposited Plan 252598	Folio Identifier 19 / 252598
Lot 18 Deposited Plan 252598	Certificate of Title Volume 3542 Folio 72
Lot 1 Deposited Plan 218325	Certificate of Title Volume 5422 Folio 115
The area of 504.6 m <sup>2</sup> shown on Deposited Plan 252598 being part of Lot 3 Deposited Plan 343456 exclusive of Lot 1 Deposited Plan 218325	Folio Identifier 3 / 343456
Lot 12 Deposited Plan 774083	Folio Identifier 12 / 774083
Lot 13 Deposited Plan 774083	Folio Identifier 13 / 774083
Lot 14 Deposited Plan 774083	Folio Identifier 14 / 774083
Lot 15 Deposited Plan 774083	Folio Identifier 15 / 774083
Lot 16 Deposited Plan 774083	Certificate of Titles: Volume 7328 Folio 230; Volume 10520 Folio 14; Volume 12152 Folio 51; and Volume 10934 Folio 236
Lot 4 Deposited Plan 811738	Certificate of Titles: Folio Identifier 9 / 774083; Folio Identifier 19 / 774083; and Folio Identifier 20 / 774083
Lot 5 Deposited Plan 811738	Folio Identifier 5 / 811738
Lot 6 Deposited Plan 811738	Certificate of Titles: Folio Identifier 11 / 774083; and Folio Identifier 21 / 774083
The area of 17 ¼ perches shown on Deposited Plan 448095 being part of Lot 1 Deposited Plan 79496	Certificate of Titles: Volume 7541 Folio 227; and Volume 7541 Folio 228
The area of 2 ½ perches shown on Plan marked 'A' annexed to Memorandum of Transfer K733707 registered at Land and Property Information, being part of Lot 2 Deposited Plan 219098	Certificate of Title Volume 7516 Folio 200
Lot 1 Deposited Plan 578109	Certificate of Title Volume 7516 Folio 200
The area of 32 square feet shown on Memorandum of Transfer L566448, registered at Land and Property Information, being part of Lot A Deposited Plan 432278	Certificate of Title Volume 7110 Folio 230

---

## Department of Trade and Investment, Regional Infrastructure and Services

---

### ANIMAL DISEASES (EMERGENCY OUTBREAKS) ACT 1991

#### Section 29 Notice

##### Further Extension of Importation Order – Abalone (No. 5)

I, THERESE MARGARET WRIGHT, Deputy Chief Veterinary Officer, with the powers the Minister has delegated to me pursuant to section 67 of the Animal Diseases (Emergency Outbreaks) Act 1991 ('the Act') and pursuant to sections 28 and 29 of the Act extend the operation of the importation order titled "Importation Order – Abalone (No. 5)" dated 13 January 2012 and published in the *NSW Government Gazette* No. 5 on 13 January 2012 at pages 47-49 for a further period of 30 days from the date this notice is published in the Gazette.

Dated this the 7th day of March 2012.

THERESE MARGARET WRIGHT,  
Deputy Chief Veterinary Officer

Note: The importation order titled "Importation Order – Abalone (No. 5)" dated 13 January 2012 was previously extended by extension notice titled "Extension of Importation Order – Abalone (No. 5)" dated 8 February 2012 and published in *New South Wales Government Gazette* No. 15 on 8 February 2012 at page 371.

---

### ANIMAL DISEASES (EMERGENCY OUTBREAKS) ACT 1991

#### Section 29 Notice

##### 5th Further Extension of Importation Order – Pigeons (No. 2)

I, THERESE MARGARET WRIGHT, Deputy Chief Veterinary Officer, with the powers the Minister has delegated to me pursuant to section 67 of the Animal Diseases (Emergency Outbreaks) Act 1991 ('the Act') and pursuant to sections 28 and 29 of the Act extend the operation of the importation order titled "Importation Order – Pigeons (No. 2)" dated 21 September 2011 and published in *NSW Government Gazette* No. 94 on 23 September 2011 at pages 5675-5676 for a further period of 30 days from the date this notice is published in the Gazette.

Dated this the 7th day of March 2012.

THERESE MARGARET WRIGHT,  
Deputy Chief Veterinary Officer

Note: The importation order titled "Importation Order – Pigeons (No. 2)" dated 21 September 2011 was previously extended by:

- extension notice titled "Extension of Importation Order – Pigeons (No. 2)" dated 14 October 2011 and published in *NSW Government Gazette* No. 101 on 21 October 2011 at page 6107; and
  - extension notice titled "Further Extension of Importation Order – Pigeons (No. 2)" dated 16 November 2011 and published in *NSW Government Gazette* No. 111 on 18 November 2011 at page 6602.
  - extension notice titled "2nd Further Extension of Importation Order – Pigeons (No. 2)" dated 12 December 2011 and published in *NSW Government Gazette* No. 126 on 14 December 2011 at page 7143.
  - extension notice titled "3rd Further Extension of Importation Order – Pigeons (No. 2)" dated 10 January 2012 and published in *NSW Government Gazette* No. 2 on 10 January 2012 at page 11.
  - extension notice titled "4th Further Extension of Importation Order – Pigeons (No. 2)" dated 8 February 2012 and published in *NSW Government Gazette* No. 15 on 8 February 2012 at page 371.
-

## PRIMARY INDUSTRIES

### FISHERIES MANAGEMENT ACT 1994

Fisheries Management (Aquaculture) Regulation 2007

Notification under Clause 33 (4)

Proposed Tender of Aquaculture Leases in Various Estuaries of NSW

NSW Department of Primary Industries (NSW DPI), is offering by public tender nine (9) areas of public water land in various estuaries of NSW, for the purpose of oyster aquaculture.

<i>Lease No.</i>	<i>Lease Area (ha)</i>	<i>Estuary/Location</i>	<i>OISAS Status</i>	<i>GIS Survey Available</i>
OL97/006	1.2099	Macleay River	POAA	Yes
OL85/191	1.093	Wallis Lake	POAA	Yes
OL88/047	0.7179	Wallis Lake	POAA	Yes
AL07/016	0.2001	Port Stephens	POAA	Yes
AL11/003	1.01	Port Stephens	POAA	No
AL11/004	0.52	Port Stephens	POAA	No
OL91/045	0.7837	Port Stephens	POAA	Yes
AL02/024	2.0134	Brisbane Water	POAA	Yes
OL80/058	0.7114	Crookhaven River	POAA	Yes

All tenders must be marked 'Confidential' and submitted to: Tender Box, Port Stephens Fisheries Institute, Locked Bag 1, Nelson Bay NSW 2315. Tenders must be received at this address no later than 4:30 p.m., on Friday, 13 April 2012.

Any lease granted as a result of the tender will be subject to standard covenants and conditions of an aquaculture lease and aquaculture permit as prescribed under the Fisheries Management Act 1994, including payment of prescribed annual fees and charges. Lease rent is charged annually, currently at \$51 per hectare (excl. GST), which is subject to an annual Consumer Price Index adjustment. Tenure of a lease will be up to 15 years.

Leases will be tendered on an "as is" basis, any existing improvements have not been valued and will become the responsibility of the leaseholder. An information package, which contains the Terms and Conditions of the tender and a tender form, can be obtained by contacting an Aquaculture Officer at the Port Stephens Fisheries Institute on (02) 4982 1232, or by visiting the department's website at [www.dpi.nsw.gov.au](http://www.dpi.nsw.gov.au).

BILL TALBOT,  
Director,  
Aquaculture, Conservation and Marine Parks,  
Fisheries Division,  
NSW Department of Primary Industries

**MINERAL RESOURCES**

NOTICE is given that the following applications have been received:

**EXPLORATION LICENCE APPLICATIONS**

(T12-1036)

No. 4492, PERILYA BROKEN HILL LIMITED (ACN 099 761 289), area of 28 units, for Group 1, dated 29 February 2012. (Broken Hill Mining Division).

(T12-1037)

No. 4493, PEEL MINING LIMITED (ACN 119 343 734), area of 100 units, for Group 1, dated 2 March 2012. (Cobar Mining Division).

(T12-1038)

No. 4494, Garry NOBLE, area of 2 units, for Group 1, dated 2 March 2012. (Armidale Mining Division).

(T12-1039)

No. 4495, GOLD AND COPPER RESOURCES PTY LIMITED (ACN 124 534 863), area of 28 units, for Group 1, dated 5 March 2012. (Orange Mining Division).

(T12-1040)

No. 4496, Garry NOBLE, area of 14 units, for Group 1, dated 5 March 2012. (Armidale Mining Division).

(T12-1041)

No. 4497, GOLDEN CROSS OPERATIONS PTY. LTD. (ACN 050 212 827), area of 48 units, for Group 1, dated 6 March 2012. (Orange Mining Division).

**MINING LEASE APPLICATION**

(T12-1016)

No. 418, ARGENT MINERALS LIMITED (ACN 124 780 276), area of about 1465 hectares, to mine for barite, copper, gold, lead, nickel, rare earth minerals, silver and zinc, dated 24 January 2012. (Orange Mining Division).

CHRIS HARTCHER, M.P.,  
Minister for Resources and Energy

NOTICE is given that the following applications have been received:

**REQUEST FOR CANCELLATION OF AUTHORITIES**

(T07-0489)

Exploration Licence No. 7153, ILUKA RESOURCES LIMITED (ACN 008 675 018), Counties of Manara and Kilferra, area of 207 Units. Application for Cancellation was received on 2 March 2012.

(T10-0153)

Exploration Licence No. 7641, ABX2 PTY LTD (ACN 139 791 478), Counties of Kennedy and Cunningham, area of 76 units. Application for Cancellation was received on 5 March 2012.

CHRIS HARTCHER, M.P.,  
Minister for Resources and Energy

NOTICE is given that the following applications have been granted:

**EXPLORATION LICENCE APPLICATIONS**

(T11-0096)

No. 4216, now Exploration Licence No. 7908, LUE RYLSTONE PTY LTD (ACN 147 439 012), County of Phillip, Map Sheet (8832, 8932), area of 40 units, for Group 2 and Group 6, dated 22 February 2012, for a term until 22 February 2014.

(T11-0103)

No. 4223, now Exploration Licence No. 7909, LUE RYLSTONE PTY LTD (ACN 147 439 012), County of Phillip, Map Sheet (8832, 8932), area of 99 units, for Group 1, Group 2 and Group 6, dated 22 February 2012, for a term until 22 February 2014.

(T11-0104)

No. 4224, now Exploration Licence No. 7910, LUE RYLSTONE PTY LTD (ACN 147 439 012), Counties of Hunter, Phillip and Roxburgh, Map Sheet (8932), area of 99 units, for Group 1, Group 2 and Group 6, dated 22 February 2012, for a term until 22 February 2014.

(T11-0281)

No. 4370, now Exploration Licence No. 7913, FAR NORTH MINERALS PTY LTD (ACN 152 153 878), County of Sandon, Map Sheet (9236), area of 12 units, for Group 2, dated 2 March 2012, for a term until 2 March 2014.

CHRIS HARTCHER, M.P.,  
Minister for Resources and Energy

NOTICE is given that the following application has been withdrawn:

**EXPLORATION LICENCE APPLICATION**

(T11-0365)

No. 4443, ABX1 PTY LTD (ACN 139 790 364), County of Arrawatta and County of Gough, Map Sheet (9138, 9139, 9238). Withdrawal took effect on 1 March 2012.

CHRIS HARTCHER, M.P.,  
Minister for Resources and Energy

NOTICE is given that the following applications for renewal have been received:

(12-1324)

Exploration Licence No. 4574, ANGLO COAL (DARTBROOK) PTY LTD (ACN 000 012 813) and MARUBENI THERMAL COAL PTY LTD (ACN 061 468 620), area of 1336 hectares. Application for renewal received 5 March 2012.

(12-1253)

Exploration Licence No. 6209, SOMERSET MINERALS PTY LTD (ACN 142 148 418), area of 3 units. Application for renewal received 1 March 2012.

(11-6503)

Exploration Licence No. 6511, ORPHEUS ENERGY (ASHFORD) PTY LTD (ACN 152 564 933), area of 4 units. Application for renewal received 29 February 2012.

(11-2164)

Exploration Licence No. 6523, GLOUCESTER RESOURCES LIMITED (ACN 114 162 59), area of 3559 hectares. Application for renewal received 2 March 2012.

(12-1298)

Exploration Licence No. 6524, GLOUCESTER RESOURCES LIMITED (ACN 114 162 59), area of 2091 hectares. Application for renewal received 2 March 2012.

(05-0271)

Exploration Licence No. 6532, CARBINE TUNGSTEN LIMITED (ACN 115 009 106), area of 11 units. Application for renewal received 8 February 2012.

(T07-0475)

Exploration Licence No. 7097, GOLDEN CROSS OPERATIONS PTY. LTD. (ACN 050 212 827), area of 23 units. Application for renewal received 1 March 2012.

(T08-0039)

Exploration Licence No. 7128, ALLIANCE (NSW) PTY LTD (ACN 096 947 223), area of 8 units. Application for renewal received 6 March 2012.

(T09-0232)

Exploration Licence No. 7460, CENTIUS GOLD LIMITED (ACN 140 475 921), area of 31 units. Application for renewal received 29 February 2012.

(T09-0237)

Exploration Licence No. 7468, TRI ORIGIN MINING PTY LIMITED (ACN 115 529 112), area of 13 units. Application for renewal received 1 March 2012.

(T09-0267)

Exploration Licence No. 7469, TRI ORIGIN MINING PTY LIMITED (ACN 115 529 112), area of 65 units. Application for renewal received 2 March 2012.

CHRIS HARTCHER, M.P.,  
Minister for Resources and Energy

### RENEWAL OF CERTAIN AUTHORITIES

NOTICE is given that the following authorities have been renewed:

(T04-0063)

Exploration Licence No. 6323, BOUNTY RESOURCES PTY LIMITED (ACN 108 458 420), Counties of Bathurst, Georgiana and Westmoreland, Map Sheet (8830), area of 6 units, for a further term until 18 October 2012. Renewal effective on and from 22 February 2012.

(06-0081)

Exploration Licence No. 6731, OROYA MINING LIMITED (ACN 009 146 794), County of Auckland, Map Sheet (8824), area of 14 units, for a further term until 7 March 2013. Renewal effective on and from 8 February 2012.

(06-4068)

Exploration Licence No. 6739, ISOKIND PTY LIMITED (ACN 081 732 498), Counties of Canbelego and Flinders, Map Sheet (8234, 8235), area of 30 units, for a further term until 26 March 2013. Renewal effective on and from 5 March 2012.

(06-4140)

Exploration Licence No. 6771, SILVER MINES LIMITED (ACN 107 452 942), County of Clive, Map Sheet (9239), area of 12 units, for a further term until 9 March 2013. Renewal effective on and from 5 March 2012.

(07-0086)

Exploration Licence No. 6803, ARASTRA EXPLORATION PTY LTD (ACN 085 025 798), Map Sheet (7436), area of 53 units, for a further term until 6 June 2013. Renewal effective on and from 29 June 2012.

(T09-0025)

Exploration Licence No. 7346, PANGAEA MINERALS PTY LIMITED (ACN 120 631 316), Counties of Fitzgerald, Killara and Yungnulgra, Map Sheet (7636), area of 12 units, for a further term until 29 May 2013. Renewal effective on and from 8 February 2012.

(09-0452)

Mining Lease No. 1596 (Act 1992), GUJARAT NRE FCGL PTY LTD (ACN 111 928 762), Parish of Banksia, County of Camden; Parish of Burke, County of Camden; Parish of Dendrobium, County of Camden; Parish of Kembla, County of Camden and Parish of Wongawilli, County of Camden, Map Sheet (9028-4-N, 9029-2-S, 9029-3-S), area of 11074 hectares, for a further term until 7 October 2029. Renewal effective on and from 3 February 2012.

CHRIS HARTCHER, M.P.,  
Minister for Resources and Energy

### REFUSAL OF APPLICATIONS FOR RENEWAL

NOTICE is given that the applications for renewal in respect of the following authorities have been refused:

(T02-0085)

Exploration Licence No. 6008, Peter John ALSOP, County of Murchison, Map Sheet (9037), area of 2 units. The authority ceased to have effect on 29 February 2012.

(07-0310)

Exploration Licence No. 6919, COMMISSIONERS GOLD LIMITED (ACN 115 845 942), County of St Vincent, Map Sheet (8827), area of 18 units. The authority ceased to have effect on 1 March 2012.

CHRIS HARTCHER, M.P.,  
Minister for Resources and Energy

### WITHDRAWAL OF APPLICATION FOR RENEWAL

NOTICE is given that the application for renewal in respect of the following authority has been withdrawn:

(T09-0218)

Exploration Licence No. 7463, NEWMONT EXPLORATION PTY LTD (ACN 006 306 690), Counties of Phillip and Wellington, Map Sheet (8733, 8833), area of 20 units. Application for renewal lodged on 28 February 2012. The title continues to have effect by virtue of the application for renewal lodged on 1 March 2012.

CHRIS HARTCHER, M.P.,  
Minister for Resources and Energy



## LANDS

**DUBBO CROWN LANDS OFFICE**  
**45 Wingewarra Street (PO Box 1840), Dubbo NSW 2830**  
**Phone: (02) 6883 3300 Fax: (02) 6884 2067**

### ROADS ACT 1993

#### ORDER

Transfer of a Crown Road to a Council

IN pursuance of the provisions of section 151, Roads Act 1993, the Crown road specified in Schedule 1 is transferred to the Roads Authority specified in Schedule 2 hereunder, as from the date of publication of this notice and as from that date, the road specified in Schedule 1 ceases to be a Crown road.

KATRINA HODGKINSON, M.P.,  
 Minister for Primary Industries

#### SCHEDULE 1

The Crown public road south of Lot 495 in DP 722903, Parish of Guntawang, County of Phillip, as shown black on the attached diagram.



#### SCHEDULE 2

Road Authority: Mid-Western Regional Council.

File No.: W493130.

Council's Reference: KB: (R0790022).

### ADDITION TO RESERVED CROWN LAND

PURSUANT to section 88 of the Crown Lands Act 1989, the Crown Land specified in Column 1 of the Schedule hereunder, is added to the reserved land specified opposite thereto in Column 2 of the Schedule.

KATRINA HODGKINSON, M.P.,  
 Minister for Primary Industries

#### SCHEDULE

##### *Column 1*

Land District: Mudgee.  
 Local Government Area:  
 Mid-Western Regional  
 Council.  
 Locality: Gulgong.  
 Lot 5, section 48,  
 DP No. 758482,  
 Parish Guntawang,  
 County Phillip.  
 Area: 1012 square metres.  
 File No.: DB83 R 96.

##### *Column 2*

Reserve No.: 91021.  
 Public Purpose: Public  
 recreation.  
 Notified: 27 January 1978.  
 Lot 7010, DP No. 1019718,  
 Parish Guntawang,  
 County Phillip.  
 Lot 6, section 48, DP No.  
 758482, Parish Guntawang,  
 County Phillip.  
 Lot 480, DP No. 40733,  
 Parish Guntawang,  
 County Phillip.  
 New Area: 6.827 hectares.

**GOULBURN OFFICE**  
**159 Auburn Street (PO Box 748), Goulburn NSW 2580**  
**Phone: (02) 4824 3700 Fax: (02) 4822 4287**

**REVOCATION OF RESERVATION OF CROWN  
LAND**

PURSUANT to section 90 of the Crown Lands Act 1989, the reservation of Crown Land specified in Column 1 of the Schedules hereunder, is revoked to the extent specified opposite thereto in Column 2 of the Schedules.

KATRINA HODGKINSON, M.P.,  
Minister for Primary Industries

SCHEDULE 1

<i>Column 1</i>	<i>Column 2</i>
Land District: Braidwood.	The parts being Lot 1, DP
Local Government Area: Palerang Council.	1172500 (closed road vide <i>New South Wales Government</i>
Locality: Braidwood.	<i>Gazette</i> 111, November 1955,
Reserve No.: 755954.	Folio 3370), Parish Percy,
Public Purpose: Future public requirements.	County St Vincent, of an area of 1.178 hectares.
Notified: 29 June 2007.	
File No.: 11/12497:BA.	

Note: It is intended to sell the revoked part being closed road to the adjoining land owner.

SCHEDULE 2

<i>Column 1</i>	<i>Column 2</i>
Land District: Cooma.	The parts being Lot 2, DP
Local Government Area: Cooma-Monaro Council.	1171883 (closed road vide <i>New South Wales Government</i>
Locality: Numeralla.	<i>Gazette</i> dated 27 March 1925,
Reserve No.: 750551.	Folio 1615), Parish Montagu,
Public Purpose: Future public requirements.	County Beresford, an area of 8280 square metres.
Notified: 29 June 2007.	
File No.: GB07 H 430:BA.	

Note: It is intended to sell the revoked part being closed road to the adjoining land owner.

**ERRATUM**

AS per the notification of Correction of Defective Instrument which appeared in *New South Wales Government Gazette* dated 24 February 2012, Folio 522, part of the description is hereby amended. The description the words “Parish – Milbang; County – Argyle” is deleted and replaced with “Parishes – Cullarin and Milbang; Counties – King and Argyle” and “Lots 1 and 2, DP 1172139 (not being land under the Real Property Act)” is deleted and replaced with “Lots 1 and 2, DP 1172139 (not being land under the Real Property Act and subject to easement for transmission line 30.48 wide over existing line of poles (approximate position) (A) created by Deposited Plan 1172139)”.

Reference: 08/1206:BA.

**GRAFTON OFFICE**  
**76 Victoria Street (PO Box 272), Grafton NSW 2460**  
**Phone: (02) 6640 3400 Fax: (02) 6642 5375**

**NOTIFICATION OF CLOSING OF A ROAD**

IN pursuance of the provisions of the Roads Act 1993, the road hereunder described is closed and the lands comprised therein cease to be public road and the rights of passage and access that previously existed in relation to the road is extinguished. Upon closing, title to the land, comprising the former public road, vests in the body specified in the Schedule hereunder.

KATRINA HODGKINSON, M.P.,  
 Minister for Primary Industries

Description

*Parish – Clarenza; County – Clarence;  
 Land District – Grafton; L.G.A. – Clarence Valley*

Road Closed: Lot 1, DP 1169692.

File No.: GF07 H 154.

Schedule

On closing, the land within Lot 1, DP 1169692 remains vested in the State of New South Wales as Crown Land.

Description

*Parish – Never Never; County – Raleigh;  
 Land District – Bellingen; L.G.A. – Bellingen*

Road Closed: Lots 1-2, DP 1169413.

File No.: 11/00887.

Schedule

On closing, the land within Lots 1-2, DP 1169413 remains vested in the State of New South Wales as Crown Land.

**CROWN LANDS ACT 1989**

## Erratum

IN the notice appearing in the New South Wales Government Gazette No. 21 of the 24 February 2012, Folio 524, under the heading "NOTIFICATION OF CLOSING OF ROAD", in respect of Road Closed: Lot 1, DP 1168673, DP 1168673 should be deleted and DP1168763 be inserted in lieu.

File No.: 09/08721.

**GRIFFITH OFFICE**  
**2nd Floor, Griffith City Plaza,**  
**120–130 Banna Avenue (PO Box 1030), Griffith NSW 2680**  
**Phone: (02) 6960 3600      Fax: (02) 6962 5670**

**ERRATUM**

IN the notice appearing in the *New South Wales Government Gazette* of the 24th February 2012, Folio 525, under the heading of “NOTIFICATION OF CLOSING OF A ROAD”, Lot 1, DP 1170948 the Parish should read Buckinbong and Faithfull.

File No.: 11/00858.

---

**ERRATUM**

IN the notice appearing in the *New South Wales Government Gazette* of the 24th February 2012, Folio 525, under the heading of “NOTIFICATION OF CLOSING OF A ROAD”, Lot 1, DP 1141577 the Parish should read Buckinbong, Brewarrena and Faithfull.

File No.: 08/8734.

KATRINA HODGKINSON, M.P.,  
Minister for Primary Industries

---

**HAY OFFICE**  
**126 Lachlan Street (PO Box 182), Hay NSW 2711**  
**Phone: (02) 6990 1800      Fax: (02) 6993 1135**

**NOTIFICATION OF CLOSING OF A ROAD**

IN pursuance of the provisions of the Roads Act 1993, the road hereunder described is closed and the lands comprised therein cease to be public road and the rights of passage and access that previously existed in relation to the road is extinguished. Upon closing, title to the land, comprising the former public road, vests in the body specified in the Schedule hereunder.

KATRINA HODGKINSON, M.P.,  
Minister for Primary Industries

Description

*Parish – Beremegad; County – Wakool;  
Land District – Deniliquin; L.G.A. – Wakool*

Road Closed: Lots 1-2, DP 1168123.

File No.: HY93 H 46

Schedule

On closing, the land within Lots 1-2, DP 1168123 remains vested in the State of New South Wales as Crown Land.

**ERRATUM**

In the notice appearing in the *New South Wales Government Gazette* of the 23rd December 2011, Folio 7347, under the heading of “NOTIFICATION OF CLOSING OF PUBLIC ROAD” Lots 1 and 2, DP 1170070, File No. should read 11/01334.

File No.: 11/01334.

KATRINA HODGKINSON, M.P.,  
Minister for Primary Industries

## NEWCASTLE OFFICE

437 Hunter Street, Newcastle NSW 2300 (PO Box 2185, Dangar NSW 2309)

Phone: (02) 4925 4104 Fax: (02) 4925 3517

## NOTIFICATION OF CLOSING OF A ROAD

IN pursuance of the provisions of the Roads Act 1993, the road hereunder described is closed and the lands comprised therein cease to be public road and the rights of passage and access that previously existed in relation to the road is extinguished. Upon closing, title to the land, comprising the former public road, vests in the body specified in the Schedule hereunder.

KATRINA HODGKINSON, M.P.,  
Minister for Primary Industries

## Description

*Parish – Arkell; County – Bathurst;  
Land District – Bathurst; L.G.A. – Bathurst Regional*

Road Closed: Lot 1, DP 1172831.

File No.: 11/12535.

## Schedule

On closing, the land within Lot 1, DP 1172831 remains vested in the State of New South Wales as Crown Land.

## Description

*Parish – Malmesbury; County – Bathurst;  
Land District – Bathurst; L.G.A. – Bathurst Regional*

Road Closed: Lot 1, DP 1172496.

File No.: CL/00647.

## Schedule

On closing, the land within Lot 1, DP 1172496 remains vested in the State of New South Wales as Crown Land.

## Description

*Parish – Wyong; County – Northumberland;  
Land District – Gosford; L.G.A. – Wyong*

Road Closed: Lot 1, DP 1169703 (not being land under the Real Property Act).

File No.: 07/1284.

## Schedule

On closing, the Land within Lot 1, DP 1169703 remains vested in the State of New South Wales as Crown Land.

## REVOCATION OF RESERVATION OF CROWN LAND

PURSUANT to section 90 of the Crown Lands Act 1989, the reservation of Crown Land specified in Column 1 of the Schedule hereunder, is revoked to the extent specified opposite thereto in Column 2 of the Schedule.

KATRINA HODGKINSON, M.P.,  
Minister for Primary Industries

## SCHEDULE

## Column 1

Parish: Wyong.  
County: Northumberland.  
Land District: Gosford.  
L.G.A.: Wyong.  
Location: Jilliby.  
Reserve No.: 163.  
Public Purpose: Water  
supply and access.

Notified: 24 September 1884.

File Reference: 07/1284.

## Column 2

The part being Lot 1, DP  
1169703, comprising 5874  
square metres.

Note: For the purpose of sale of Lot 1, DP 1169703, closed Crown road (notified in *New South Wales Government Gazette* dated 9 March 2012, to an adjoining owner).

**NOWRA OFFICE**  
**5 O’Keefe Avenue (PO Box 309), Nowra NSW 2541**  
**Phone: (02) 4428 9100      Fax: (02) 4421 2172**

**NOTIFICATION OF CLOSING OF A ROAD**

IN pursuance of the provisions of the Roads Act 1993, the road hereunder described is closed and the lands comprised therein cease to be public road and the rights of passage and access that previously existed in relation to the road is extinguished. Upon closing, title to the land, comprising the former public road, vests in the body specified in the Schedule hereunder.

KATRINA HODGKINSON, M.P.,  
 Minister for Primary Industries

Description

*Parish – Winifred; County – Beresford;  
 Land District – Cooma; L.G.A. – Cooma-Monaro*

Road Closed: Lot 1, DP 1171074 subject to right of carriageway created by Deposited Plan 1171074.

File No.: GB07 H 328.

Schedule

On closing, the land within Lot 1, DP 1171074 remains vested in the State of New South Wales as Crown Land.

Description

*Parish – Bunberra; County – Camden;  
 Land District – Nowra; L.G.A. – Shoalhaven*

Road Closed: Lots 1-2, DP 1171875.

File No.: 10/15378.

Schedule

On closing, the land within Lots 1-2, DP 1171875 remains vested in the State of New South Wales as Crown Land.

Description

*Parish – Young; County – Monteagle;  
 Land District – Young; L.G.A. – Young*

Road Closed: Lots 1-2, DP 1171629.

File No.: GB05 H 651.

Schedule

On closing, the land within Lots 1-2, DP 1171629 remains vested in the State of New South Wales as Crown Land.

**SYDNEY METROPOLITAN OFFICE**  
**Level 12, Macquarie Tower, 10 Valentine Avenue, Parramatta 2150**  
**(PO Box 3935, Parramatta NSW 2124)**  
**Phone: (02) 8836 5300 Fax: (02) 8836 5365**

**NOTIFICATION OF CLOSING OF A ROAD**

IN pursuance of the provisions of the Roads Act 1993, the road hereunder described is closed and the lands comprised therein cease to be public road and the rights of passage and access that previously existed in relation to the road is extinguished. Upon closing, title to the land, comprising the former public road, vests in the body specified in the Schedule hereunder.

KATRINA HODGKINSON, M.P.,  
 Minister for Primary Industries

Description

*Parish – Butmaroo; County – Murray;  
 Land District – Queanbeyan; L.G.A. – Palerang*

Lot 1, DP 1171538 (not being land under the Real Property Act and subject to Rights of Carriageway created by Deposited Plan 1171538).

File No.: GB06 H 252.

Schedule

On closing, the title for the land in Lot 1, DP 1171538 remains vested in the State of New South Wales as Crown Land.

Description

*Parish – Newham; County – King;  
 Land District – Boorowa; L.G.A. – Boorowa*

Lot 1, DP 1171255 (not being land under the Real Property Act).

File No.: GB06 H 71.

Schedule

On closing, the title for the land in Lot 1, DP 1171255 remains vested in the State of New South Wales as Crown Land.

**APPOINTMENT OF RESERVE TRUST AS TRUSTEE OF A RESERVE**

PURSUANT to section 92(1) of the Crown Lands Act 1989, the reserve trust specified in Column 1 of the Schedule hereunder, is appointed as trustee of the reserve specified opposite thereto in Column 2 of the Schedule.

KATRINA HODGKINSON, M.P.,  
 Minister for Primary Industries

SCHEDULE

*Column 1*

Forestville Park (R48669)  
 Reserve Trust.

*Column 2*

Reserve No.: 88741.  
 Public Purpose: Plantation.  
 Notified: 20 October 1972.  
 File No.: 12/00788.



**TAMWORTH OFFICE****25-27 Fitzroy Street (PO Box 535), Tamworth NSW 2340****Phone: (02) 6764 5100 Fax: (02) 6766 3805****NOTIFICATION OF CLOSING OF A ROAD**

IN pursuance of the provisions of the Roads Act 1993, the road hereunder described is closed and the lands comprised therein cease to be public road and the rights of passage and access that previously existed in relation to the road is extinguished. Upon closing, title to the land, comprising the former public road, vests in the body specified in the Schedule hereunder.

KATRINA HODGKINSON, M.P.,  
Minister for Primary Industries

## Description

*Parishes – Rangira and Willuri; County – Nandewar;  
Land District – Gunnedah; L.G.A. – Gunnedah*

Road Closed: Lots 1 and 2, DP 1167192.

File No.: 08/1534.

## Schedule

On closing, the land within Lots 1 and 2, DP 1167192 remains vested in the State of New South Wales as Crown Land.

## Description

*Parish – Murulla; County – Brisbane;  
Land District – Quirindi; L.G.A. – Upper Hunter*

Road Closed: Lot 1, DP 1167065.

File No.: TH05 H 350.

## Schedule

On closing, the land within Lot 1, DP 1167065 remains vested in the State of New South Wales as Crown Land.

## Description

*Parish – Breeza; County – Pottinger;  
Land District – Gunnedah; L.G.A. – Gunnedah*

Road Closed: Lot 1, DP 1172359.

File No.: 07/5595.

## Schedule

On closing, the land within Lot 1, DP 1172359 remains vested in the State of New South Wales as Crown Land.

## Description

*Parish – Bubbogullion; County – Inglis;  
Land District – Tamworth; L.G.A. – Tamworth Regional*

Road Closed: Lot 2, DP 1172835.

File No.: 07/4509.

## Schedule

On closing, the land within Lot 2, DP 1172835 remains vested in the State of New South Wales as Crown Land.

## Description

*Parish – Rangira; County – Nandewar;  
Land District – Gunnedah; L.G.A. – Gunnedah*

Road Closed: Lot 5, DP 1172836.

File No.: 07/1619.

## Schedule

On closing, the land within Lot 5, DP 1172836 remains vested in the State of New South Wales as Crown Land.

## Description

*Parish – Gill; County – Inglis;  
Land District – Tamworth; L.G.A. – Tamworth Regional*

Road Closed: Lot 2, DP 1171334.

File No.: 11/03385.

## Schedule

On closing, the land within Lot 2, DP 1171334 remains vested in the State of New South Wales as Crown Land.

**TAREE OFFICE**  
**98 Victoria Street (PO Box 440), Taree NSW 2430**  
**Phone: (02) 6591 3500 Fax: (02) 6552 2816**

**CROWN LANDS ACT 1989**

Erratum

IN the notice appearing in the *New South Wales Government Gazette* No. 24 of the 2 March 2012, Folio 600, under the heading "NOTIFICATION OF CLOSING OF ROAD", in respect of Road Closed: Lots 1 and 2, DP 1169619, the words Parish Bellbrook should be deleted and the words Parishes Bellbrook and Hickey inserted in lieu.

File No.: 07/4352.

**NOTIFICATION OF CLOSING OF A ROAD**

IN pursuance of the provisions of the Roads Act 1993, the road hereunder described is closed and the lands comprised therein cease to be public road and the rights of passage and access that previously existed in relation to the road is extinguished. Upon closing, title to the land, comprising the former public road, vests in the body specified in the Schedule hereunder.

KATRINA HODGKINSON, M.P.,  
 Minister for Primary Industries

Description

*Parish – Womboin; County – Gloucester;*  
*Land District – Gloucester; L.G.A. – Gloucester*

Road Closed: Lot 1, DP 1165273.

File No.: TE05 H 269.

Schedule

On closing, the land within Lot 1, DP 1165273 remains vested in the State of New South Wales as Crown Land.

Description

*Parish – Mackay; County – Macquarie;*  
*Land District – Taree; L.G.A. – Greater Taree*

Road Closed: Lot 1, DP 1169669.

File No.: TE06 H 54.

Schedule

On closing, the land within Lot 1, DP 1169669 remains vested in the State of New South Wales as Crown Land.

Description

*Parish – Mimi; County – Gloucester;*  
*Land District – Taree; L.G.A. – Greater Taree*

Road Closed: Lot 1, DP 1169614.

File No.: 07/3124.

Schedule

On closing, the land within Lot 1, DP 1169614 remains vested in the State of New South Wales as Crown Land.

Description

*Parish – Walibree; County – Macquarie;*  
*Land District – Port Macquarie;*  
*L.G.A. – Port Macquarie-Hastings*

Road Closed: Lot 1, DP 1169670.

File No.: TE07 H 80.

Schedule

On closing, the land within Lot 1, DP 1169670 remains vested in the State of New South Wales as Crown Land.

Description

*Parish – Craven; County – Gloucester;*  
*Land District – Gloucester; L.G.A. – Gloucester*

Road Closed: Lots 1-2, DP 1169612.

File No.: 07/3247.

Schedule

On closing, the land within Lots 1-2, DP 1169612 remains vested in the State of New South Wales as Crown Land.

**WESTERN REGION OFFICE**  
**45 Wingewarra Street (PO Box 1840), Dubbo NSW 2830**  
**Phone: (02) 6883 5400 Fax: (02) 6884 2067**

**GRANTING OF A WESTERN LANDS LEASE**

IT is hereby notified that under the provisions of section 28A of the Western Lands Act 1901, the Western Lands Leases of the lands specified in the following Schedule have been granted to the undermentioned persons.

The leases are subject to the provisions of the Western Lands Act 1901 and the Regulations thereunder.

The land is to be used only for the purpose of Residence.

Initial rent will be \$100.00 per annum and re-assessed thereafter annually on 1st April of each year.

The Conditions and Reservations annexed to such leases are those Conditions published in the *New South Wales Government Gazette* of 20 March 2009, Folios 1416-1418.

All amounts due and payable to the Crown *must* be paid to the Department of Primary Industries, Crown Lands by the due date.

KATRINA HODGKINSON, M.P.,  
Minister for Primary Industries

SCHEDULE

*Administrative District – Walgett North; Shire – Walgett; Parish – Wallangulla/Mebea; County – Finch*

WLL No.	Name of Lessee	File No.	Folio Identifier	Area (m2)	Term of Lease	
					From	To
WLL 15144	Suzanne ANDREOU	12/00333	66/1065215	2490	23 February 2012	22 February 2032

**ALTERATION OF PURPOSE/CONDITIONS OF A WESTERN LANDS LEASE**

IT is hereby notified that in pursuance of the provisions of section 18J, Western Lands Act 1901, the purpose and conditions of the undermentioned Western Lands Lease have been altered as shown.

KATRINA HODGKINSON, M.P.,  
Minister for Primary Industries

*Administrative District – Cobar; Shire – Cobar;  
Parish of Beauport; County of Blaxland*

The purpose/conditions of Western Lands Lease 10391, being the land contained within Folio Identifier 4363/767200 have been altered from "Grazing and Cultivation" to "Grazing and Cultivation (Dryland)" effective from 1 March 2012.

As a consequence of the alteration of purpose and conditions rent will be assessed annually in line with the Western Lands Act 1901 and Regulations.

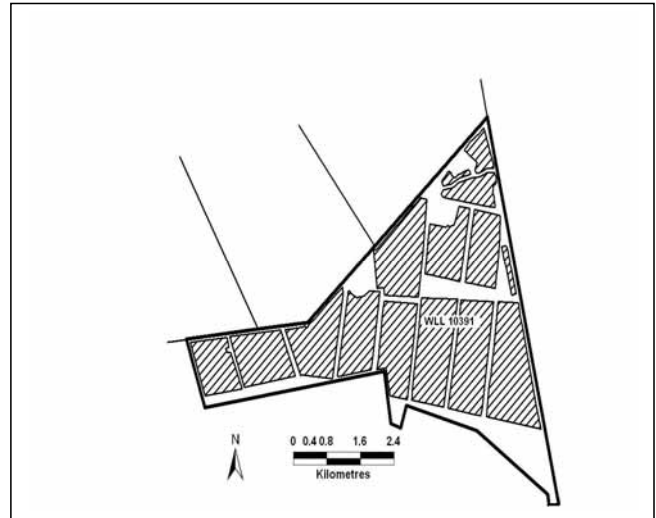
The conditions previously annexed to Western Lands Lease 10391 have been revoked and the following conditions have been annexed thereto.

**CONDITIONS AND RESERVATIONS ATTACHED TO WESTERN LANDS LEASE No. 10391**

- (1) In the conditions annexed to the lease, the expression "the Minister" means the Minister administering the Western Lands Act 1901, and any power, authority, duty or function conferred or imposed upon the Minister by or under those conditions may be exercised or performed either by the Minister or by such officers of the Department of Primary Industries as the Minister may from time to time approve.
- (2) In these conditions and reservations the expression "the Commissioner" means the Commissioner charged with the administration of the Western Lands Act 1901 ("the Act") in accordance with section 4(2) of the Act.
- (3) (a) For the purposes of this clause the term Lessor shall include Her Majesty the Queen Her Heirs and Successors the Minister and the agents servants employees and contractors of the Lessor Her Majesty Her Majesty's Heirs and Successors and the Minister.
- (b) The lessee covenants with the Lessor to indemnify and keep indemnified the Lessor from and against all claims for injury loss or damage suffered by any person or body using or being in or upon the Premises or any adjoining land or premises of the Lessor arising out of the Holder's use of the Premises and against all liabilities for costs charges and expenses incurred by the Lessor in respect of the claim of any such person or body except to the extent that any such claims and demands arise wholly from any negligence or wilful act or omission on the part of the Lessor.
- (c) The indemnity contained in this clause applies notwithstanding that this Lease authorised or required the lessee to undertake or perform the activity giving rise to any claim for injury loss or damage.
- (d) The lessee expressly agrees that the obligations of the Holder under this clause shall continue after the expiration or sooner determination of this Lease in respect of any act deed matter or thing occurring before such expiration or determination.
- (4) The rent of the lease shall be assessed in accordance with Part 6 of the Western Lands Act 1901.

- (5) The rent shall be due and payable annually in advance on 1 July in each year.
- (6) (a) "GST" means any tax on goods and/or services, including any value-added tax, broad-based consumption tax or other similar tax introduced in Australia.  
 "GST law" includes any Act, order, ruling or regulation, which imposes or otherwise deals with the administration or imposition of a GST in Australia.
- (b) Notwithstanding any other provision of this Agreement:
- (i) If a GST applies to any supply made by either party under or in connection with this Agreement, the consideration provided or to be provided for that supply will be increased by an amount equal to the GST liability properly incurred by the party making the supply.
- (ii) If the imposition of a GST or any subsequent change in the GST law is accompanied by or undertaken in connection with the abolition of or reduction in any existing taxes, duties or statutory charges (in this clause "taxes"), the consideration payable by the recipient of the supply made under this Agreement will be reduced by the actual costs of the party making the supply that are reduced directly or indirectly as a consequence of the abolition of or reduction in taxes.
- (7) The lessee must pay all rates and taxes assessed on or in respect of the land leased during the currency of the lease.
- (8) The lessee must hold and use the land leased bona fide for the lessee's own exclusive benefit and must not transfer, convey or assign the land or any portion thereof without having first obtained the written consent of the Minister.
- (9) The lessee must not enter into a sublease of the land leased unless the sublease specifies the purpose for which the land may be used under the sublease, and it is a purpose which is consistent with the purpose for which the land may be used under this lease.
- (10) If the lessee enters into a sublease of the land leased, the lessee must notify the Commissioner of the granting of the sublease within 28 days after it is granted.
- (11) The land leased must be used only for the purpose of Grazing & Cultivation (Dryland).
- (12) The lessee must maintain and keep in reasonable repair all improvements on the land leased during the currency of the lease and shall permit the Minister or the Commissioner or any person authorised by the Minister or the Commissioner at all times to enter upon and examine the whole or any part of the land leased and the buildings or other improvements thereon.
- (13) The lessee must not remove or permit any person to remove gravel, stone, clay, shells or other material for the purpose of sale from the land leased unless the lessee or the person is the holder of a quarry licence under regulations made under the Crown Lands Act 1989 or, in respect of land in a State forest, unless the lessee or the person is the holder of a forest materials licence under the Forestry Act 1916, and has obtained the special authority of the Minister to operate on the land, but the lessee may, with the approval of the Commissioner, take from the land such gravel, stone, clay, shells or other material for building and other purposes upon the land as may be required by the lessee.
- (14) The lessee must not erect or permit any person to erect any buildings or extend any existing buildings on the land leased except to the satisfaction of the Commissioner.
- (15) The lessee must ensure that the land leased is kept in a neat and tidy condition to the satisfaction of the Commissioner and not permit refuse to accumulate on the land.
- (16) Upon termination or forfeiture of the lease the Commissioner may direct that the former lessee remove any structure or material from the land at his own cost and without compensation. Where such a direction has been given the former lessee must leave the land in a clean and tidy condition free from rubbish and debris.
- (17) The lessee must, within 1 year from the date of commencement of the lease or such further period as the Commissioner may allow, enclose the land leased, either separately or conjointly with other lands held in the same interest, with a suitable fence to the satisfaction of the Commissioner.
- (18) The lessee must not obstruct or interfere with any reserves, roads or tracks on the land leased, or the lawful use thereof by any person.
- (19) The lessee must erect gates on roads within the land leased when and where directed by the Commissioner for public use and must maintain those gates together with approaches thereto in good order to the satisfaction of the Commissioner.
- (20) The right is reserved to the public of free access to the bank of any watercourse adjoining the land leased and the lessee must not obstruct access or passage by any member of the public to the bank.
- (21) The Crown shall not be responsible to the lessee or the lessee's successors in title for provision of access to the land leased.
- (22) The lessee must comply with requirements of section 18DA of the Western Lands Act 1901 which provides that except in circumstances referred to in subsection (3) of that section, cultivation of the land leased or occupied may not be carried out unless the written consent of the Authority has first been obtained and any condition to which the consent is subject under sub section (6) is complied with.
- (23) The lessee must, as the Commissioner may from time to time direct, foster and cultivate on the land leased such edible shrubs and plants as the Commissioner may consider can be advantageously and successfully cultivated.
- (24) Whenever so directed by the Commissioner, the lessee must, on such part or parts of the land leased as shall be specified in the direction, carry out agricultural practices, or refrain from agricultural practices, of such types and for such periods as the Commissioner may in the direction specify.

- (25) The lessee must, if the Commissioner so directs, prevent the use by stock of any part of the land leased for such periods as the Commissioner considers necessary to permit of the natural reseedling and regeneration of vegetation and, for that purpose, the lessee must erect within the time appointed by the Commissioner such fencing as the Commissioner may consider necessary.
- (26) The lessee must furnish such returns and statements as the Commissioner may from time to time require on any matter connected with the land leased or any other land (whether within or outside the Western Division) in which the lessee has an interest.
- (27) The lessee must, within such time as may be specified by the Commissioner take such steps and measures as the Commissioner shall direct to destroy vermin and such animals and weeds as may, under any Act, from time to time be declared (by declaration covering the land leased) noxious in the Gazette and must keep the land free of such vermin and noxious animals and weeds during the currency of the lease to the satisfaction of the Commissioner.
- (28) The lessee must ensure that cultivation and associated activities do not interfere with any road formation within the allowable area.
- (29) Access tracks to the area to be cultivated must be arranged in such a manner as to minimise the disturbance of any land surfaces within the areas required to be left uncultivated to comply with the conditions of this consent.
- (30) The lessee must ensure incised drainage lines, other than manmade structures which carry water after storms are left uncultivated in the channels and for a distance of at least 20 metres on either side of the banks of the channels, except when the Commissioner specifies otherwise.
- (31) The lessee must establish windbreaks at his/her own expense as may be ordered by Commissioner to provide adequate protection of the soil.
- (32) The lessee must undertake any appropriate measures, at his/her own expense, ordered by the Commissioner to rehabilitate any degraded cultivated areas.
- (33) The lessee must ensure stubble is retained on the soil surface and must not be burnt, except with the approval of the Commissioner or his delegate.
- (34) The lessee must ensure that sand hills and other soils with a surface texture of loamy sand or coarser are left uncultivated unless specifically approved by the commissioner.
- (35) The lessee must ensure that areas with a slope greater than 2% remain uncultivated until any soil conservation measures documented in a plan approved by the Commissioner have been implemented at the lessee's expense.
- (36) The lessee must ensure that land within 60 metres of any texture contrast or duplex soil area remains uncultivated except in accordance with a plan approved by the Commissioner. Texture contrast (or duplex) soils are soil types which have sandy to loamy topsoil abruptly overlying a clay subsoil and are prone to scalding (producing clay pans and hummocks).
- (37) The lessee must only dryland cultivate an area of 1639 ha shown hatched on the diagram hereunder. Cultivation is permitted over the whole areas shown hatched, unless the Commissioner has required that specific areas remain uncultivated.



#### ALTERATION OF PURPOSE/CONDITIONS OF A WESTERN LANDS LEASE

IT is hereby notified that in pursuance of the provisions of section 18J, Western Lands Act 1901, the purpose and conditions of the undermentioned Western Lands Lease have been altered as shown.

KATRINA HODGKINSON, M.P.,  
Minister for Primary Industries

*Administrative District – Wilcannia;  
Shire – Central Darling;  
Parish of Nelia Gaari; County of Tandora*

The purpose/conditions of Western Lands Lease 174, being the land contained within Folio Identifiers 5764/768664 and 1/1050187 has been altered from "Pastoral Purposes" to "Grazing, Farm Tourism and Recreation" effective from 1 March 2012.

As a consequence of the alteration of purpose and conditions rent will be assessed annually in line with the Western Lands Act 1901 and Regulations.

The conditions have been altered by the inclusion of the special conditions following.

#### SPECIAL CONDITIONS ANNEXED TO WESTERN LANDS LEASE No. 174

- (1) The lessee shall not use any vehicle for the purpose of "Farm Tourism" (and shall take all reasonable steps to prevent any other person from using any vehicle for the purpose of "Farm Tourism") on any part of the lease identified under the provisions of the Soil Conservation Act 1938 as protected land or as being environmentally sensitive.
- (2) The lessee shall ensure that any access tracks must be arranged in such a manner as to minimise the disturbance of any land surface.
- (3) The lessee shall ensure that all traffic is contained to the designated tracks in order to reduce the impact on soil and vegetation including potential wind and water

erosion on those tracks, erect or permit any person to erect any buildings or extend any existing buildings on the land leased except to the satisfaction of the Commissioner.

- (4) The lessee shall ensure that any European heritage sites, artefacts, buildings or other areas of significance will not be damaged, destroyed or defaced by either the lessee or other persons present on the leased land.
- (5) The lessee shall undertake any appropriate measures, at his/her own expense as ordered by the Commissioner to rehabilitate any degraded or disturbed areas.

---

**WATER****WATER ACT 1912**

APPLICATIONS for a new licence under Part 5 of the Water Act 1912, as amended have been received as follows:

NULLA NULLA LOCAL ABORIGINAL LANDS COUNCIL for a new bore, Lot 117, DP 725292, Parish of Bullamunta, County of Gunderbooka, for water supply for irrigation purposes (new licence). (Reference: 85BL239151). (GA1826458).

Any enquires should be directed to (02) 6841 7418.

Written objections, from any local occupier or statutory authority, specifying grounds and how their interest are affected, must be lodged with the NSW Office of Water, PO Box 717, Dubbo NSW 2830, within 28 days of this publication.

VICKIE CHATFIELD,  
Licensing Manager,  
Macquarie-Western

## Other Notices

### COMPANION ANIMALS REGULATION 2008

Order

Organisations Approved by the Chief Executive,  
Local Government, under Clause 16 (d) of the  
Companion Animals Regulation 2008

PURSUANT to Clause 16 (d) of the Companion Animals Regulation 2008, the organisation listed in Schedule 1 is hereby approved, subject to the conditions contained in Schedule 2.

#### SCHEDULE 1

<i>Name of organisation</i>	<i>Address of organisation</i>	<i>Name of contact officer for organisation</i>
Claws n' Paws Rescue	21 Gabagong Road, Horsefield Bay NSW 2256	Ms Christina Pirie

#### SCHEDULE 2

1. The exemption under Clause 16 (d) of the Companion Animals Regulation 2008 from the requirements of section 9 of the Companion Animals Act 1998 only applies to an animal in the custody of an organisation listed in Schedule 1 if the organisation is holding that animal for the sole purpose of re-housing the animal with a new owner.
2. The exemption under Clause 16 (d) of the Companion Animals Regulation 2008 from the requirements of section 9 of the Companion Animals Act 1998 only applies to an animal in the custody of an organisation listed in Schedule 1 if the organisation maintains appropriate records that show compliance with the Companion Animals Act 1998, Companion Animals Regulation 2008 and the Guidelines for Approval to be an Organisation Exempt from Companion Animal Registration under Clause 16 (d) of the Companion Animals Regulation 2008.
3. The exemption under Clause 16 (d) of the Companion Animals Regulation 2008 from the requirements of section 9 of the Companion Animals Act 1998 only applies to an animal in the custody of an organisation listed in Schedule 1 if the organisation maintains a register that is made available to the relevant local council and the Division of Local Government, Department of Premier and Cabinet as requested. The Register must list the names of all carers involved in the rehoming of animals and the locations of all animals received under the exemption while in the custody of the organisation.
4. The exemption under Clause 16 (d) of the Companion Animals Regulation 2008 from the requirements of section 9 of the Companion Animals Act 1998 expires five years from the date of this order, unless revoked or varied at an earlier time.

Date: 1 March 2012.

ROSS WOODWARD,  
Chief Executive, Local Government,  
Delegate of the Director General,  
Department of Premier and Cabinet

### DISTRICT COURT ACT 1973

District Court of New South Wales

Direction

PURSUANT to section 173 of the District Court Act 1973, I direct that the District Court shall sit in its criminal jurisdiction at the place and time shown as follows:

Bourke	10.00am	23 April 2012 (1 week) In lieu of 23 April 2012 (2 weeks)
Campbelltown	10.00am	9 July 2012 (2 weeks) Special Fixture

Dated this 5th day of March 2012.

R. O. BLANCH,  
Chief Judge

### DISTRICT COURT ACT 1973

District Court of New South Wales

Direction

PURSUANT to section 32 of the District Court Act 1973, I direct that the District Court shall sit in its civil jurisdiction at the place and time shown as follows:

Albury	10.00am	19 March 2012 (1 week) In lieu of 19 March 2012 (2 weeks)
Wollongong	10.00am	12 March 2012 (2 weeks) In lieu of 12 March (3 weeks)

Dated this 5th day of March 2012.

R. O. BLANCH,  
Chief Judge

### GEOGRAPHICAL NAMES ACT 1966

Notice to Amend Address Locality Boundaries  
Within the Liverpool Local Government Area

PURSUANT to the provisions of section 10 of the Geographical Names Act 1966, the Geographical Names Board hereby notifies that it has this day amended the address locality boundaries of Chipping Norton, Holsworthy, Moorebank and Wattle Grove in the Liverpool Local Government Area as shown on map GNB 3573-4.

The position and extent of these features are shown in the Geographical Names Register of New South Wales which can be viewed on the Geographical Names Board's internet site at [www.gnb@nsw.gov.au](http://www.gnb@nsw.gov.au)

KEVIN RICHARDS,  
Acting Secretary

Geographical Names Board  
PO Box 143  
Bathurst NSW 2795



**PARENTS AND CITIZENS ASSOCIATIONS  
INCORPORATION ACT 1976**

Incorporation of Parents and Citizens Associations

THE following association is hereby incorporated under the Parents and Citizens Associations Incorporation Act 1976:

- Mulgoa Public School

ADRIAN PICCOLI, M.P.,  
Minister for Education

**SCHEDULE**

Aircraft (Pesticide Applicator) Licence

<i>Name and address of Licensee</i>	<i>Date of Granting of Licence</i>
SOUTHERN AERIAL AGRICULTURE PTY LTD PO Box 1170 Naracoorte SA 5271	7 March 2012

**PESTICIDES ACT 1999**

Notice under Section 48 (4)

NOTICE is hereby given, pursuant to section 48 (4) of the Pesticides Act 1999, that I have granted a Pilot (Pesticide Rating) Licence, particulars of which are stated in the Schedule.

SEAN NUNAN,  
Team Leader, Licensing and Registration  
by delegation

**SCHEDULE**

Pilot (Pesticide Rating) Licence

<i>Name and address of Licensee</i>	<i>Date of Granting of Licence</i>
Trevor GROVE, PO Box 600, Cooroy Qld 4563	6 March 2012

**PESTICIDES ACT 1999**

Notice under Section 48 (4)

NOTICE is hereby given, pursuant to section 48 (4) of the Pesticides Act 1999, that I have granted a Pilot (Pesticide Rating) Licence, particulars of which are stated in the Schedule.

SEAN NUNAN,  
Team Leader, Licensing and Registration  
by delegation

**SCHEDULE**

Pilot (Pesticide Rating) Licence

<i>Name and address of Licensee</i>	<i>Date of Granting of Licence</i>
Jason LAW PO Box 1339 Naracoorte SA 5271	7 March 2012

**PESTICIDES ACT 1999**

Notice under Section 48 (4)

NOTICE is hereby given, pursuant to section 48 (4) of the Pesticides Act 1999, that I have granted an Aircraft (Pesticide Applicator) Licence, particulars of which are stated in the Schedule.

SEAN NUNAN,  
Team Leader, Chemicals and Radiation Licensing,  
Hazardous Materials, Chemicals and Radiation Section,  
Environment Protection Authority  
by delegation

**PESTICIDES ACT 1999**

Notice under Section 48 (4)

NOTICE is hereby given, pursuant to section 48 (4) of the Pesticides Act 1999, that I have granted an Aircraft (Pesticide Applicator) Licence, particulars of which are stated in the Schedule.

SEAN NUNAN,  
Team Leader, Chemicals and Radiation Licensing,  
Hazardous Materials, Chemicals and Radiation Section,  
Environment Protection Authority  
by delegation

**SCHEDULE**

Aircraft (Pesticide Applicator) Licence

<i>Name and address of Licensee</i>	<i>Date of Granting of Licence</i>
G & G AGRICULTURAL SERVICES PTY LTD 1273 Reserve Creek Road Delungra NSW 2403	7 March 2012

Office of the Minister for Police  
Sydney, NSW  
7 March 2012

**DISAPPEARANCE**

**ONE HUNDRED THOUSAND DOLLARS (\$100,000)  
REWARD**

ON the 23rd August 2007, Matthew LEVESON, aged 20 years, was last seen leaving the ARQ nightclub in Oxford Street, Darlinghurst. Matthew has not been seen since and it is believed that he has met with foul play.

Notice is hereby given that a reward of up to one hundred thousand dollars (\$100,000) will be paid by the Government of New South Wales for information leading to the location of the body of Matthew LEVESON or information regarding his disappearance.

The allocation of this reward will be at the sole discretion of the Commissioner of Police.

The urgent assistance and co-operation of the public is especially sought in the matter. Any information, which will be treated as confidential, may be given at any time of the day or night at any Police Station or by telephone –

Police Headquarters telephone (02) 9281 0000  
or Crime Stoppers on 1800 333 000

THE HON. MICHAEL GALLACHER, M.L.C.,  
Minister for Police and Emergency Services  
and Minister for the Hunter

**RURAL FIRES ACT 1997**

PURSUANT to section 82 of the Rural Fires Act 1997 as amended, the Commissioner of the NSW Rural Fire Service, following consultation with the local stakeholders, declares the following Local Bush Fire Danger Period Variation:

Area of Variation:

Far South Coast Team Incorporating:  
Bega Valley Shire Council  
Eurobodalla Shire Council

The Local Bush Fire Danger period has been revoked for the period 7 March until 31 March 2012.

During this period permits pursuant to section 87 of the Rural Fires Act 1997 as amended will not be required for the lighting of fire for the purposes of land clearance or fire breaks.

ROB ROGERS, A.F.S.M.,  
Deputy Commissioner,  
Director, Operational Services  
Delegate

**RURAL FIRES ACT 1997**

PURSUANT to section 82 of the Rural Fires Act 1997 as amended, the Commissioner of the NSW Rural Fire Service, following consultation with the local stakeholders, declares the following Local Bush Fire Danger Period Variation:

Area of Variation:

MIA Zone Incorporating:  
Griffith City Council  
Leeton Shire Council  
Murrumbidgee Shire Council  
Narrandera Shire Council

The Local Bush Fire Danger period has been revoked for the period 11 March until 31 March 2012.

During this period permits pursuant to section 87 of the Rural Fires Act 1997 as amended will not be required for the lighting of fire for the purposes of land clearance or fire breaks.

ROB ROGERS, A.F.S.M.,  
Deputy Commissioner,  
Director, Operational Services  
Delegate

**STATE WATER CORPORATION ACT 2004****LAND ACQUISITION (JUST TERMS  
COMPENSATION) ACT 1991**

Wyangala – Wyangala Dam Safety Upgrade  
Compulsory Acquisition – Hosking

STATE WATER CORPORATION declares, with the approval of Her Excellency the Governor, that the land described in the Schedule hereto is acquired by compulsory process pursuant to section 19 of the Land Acquisition (Just Terms Compensation) Act 1991 and section 22 of the State Water Corporation Act 2004.

Dated at Sydney this 20th day of February 2012.

Signed for State Water Corporation pursuant to Board determination.

BRETT TUCKER,  
Chief Executive Officer,  
State Water Corporation

**SCHEDULE**

1. Lot 2 in Deposited Plan 1169861 in the local government area of Cowra, Parish of Dunleary, County of Bathurst, being an area of 614.5 square metres; and
2. Lot 3, DP 1169862 in the local government area of Cowra, Parish of Dunleary, County of Bathurst, being an area of 3459 square metres

both lots said to be in the possession of Graham Mark Hosking.

**STATE WATER CORPORATION ACT 2004****LAND ACQUISITION (JUST TERMS  
COMPENSATION) ACT 1991**

Wyangala – Wyangala Dam Safety Upgrade  
Compulsory Acquisition – Piol and Stone

STATE WATER CORPORATION declares, with the approval of Her Excellency the Governor, that the land described in the Schedule hereto is acquired by compulsory process pursuant to section 19 of the Land Acquisition (Just Terms Compensation) Act 1991 and section 22 of the State Water Corporation Act 2004.

Dated at Sydney this 20th day of February 2012.

Signed for State Water Corporation pursuant to Board determination.

BRETT TUCKER,  
Chief Executive Officer,  
State Water Corporation

**SCHEDULE**

Lot 4 in Deposited Plan 1169862 in the local government area of Cowra, Parish of Dunleary, County of Bathurst, being an area of 3708 square metres and said to be in the possession of Christopher Luigi Piol and Debbie Maree Stone.

**THREATENED SPECIES CONSERVATION  
ACT 1995****Notice of Preliminary Determinations**

THE Scientific Committee has made Preliminary Determinations proposing the following changes to the relevant Schedules of the Threatened Species Conservation Act 1995.

**Proposed Additions to the Schedules****Endangered Species** (Part 1 of Schedule 1)

*Genoplesium baueri* R. Br., a terrestrial orchid.

**Endangered Population** (Part 2 of Schedule 1)

*Allocasuarina inophloia* (F.Muell. & F.M.Bailey)

L.A.S.Johnson population in the Clarence Valley Local Government Area.

**Critically Endangered Species** (Part 1 of Schedule 1A)

*Calystegia affinis* Endl., a twining plant.

**Proposed Removal from the Schedule****Endangered Population** (Part 2 of Schedule 1)

Yellow-bellied Glider *Petaurus australis* Shaw 1791 population on the Bago Plateau.

Any person may make a written submission regarding these Preliminary Determinations. Send submissions

to Suzanne Chate, PO Box 1967, Hurstville BC 1481.  
Submissions close 4 May 2012.

Copies of these determinations, which contain the reasons for the determinations, may be obtained free of charge on the internet at [www.environment.nsw.gov.au](http://www.environment.nsw.gov.au), by contacting the Scientific Committee Unit, PO Box 1967, Hurstville BC 1481. Tel: (02) 9585 6940 or Fax (02) 9585 6989 or in person at the Office of Environment and Heritage Information Centre, Level 14, 59-61 Goulburn Street, Sydney. Copies of the determinations may also be obtained from National Parks and Wildlife Service Area Offices and Visitor Centres, subject to availability.

Dr MICHELLE LEISHMAN,  
Chairperson

---

## WORKERS COMPENSATION ACT 1987

### ERRATUM

THE following three Workers Compensation Orders:

- Surgeon Fees Order;
- Medical Practitioner Fees Order; and
- Orthopaedic Surgeon Fees Order

are republished here in full. They correct the Orders which were published in Gazette No. 12 of 3 February 2012 and Gazette No. 20 of 17 February 2012.

---

## WORKERS COMPENSATION (SURGEON FEES) ORDER 2012

under the Workers Compensation Act 1987

I, JULIE NEWMAN, Acting Chief Executive Officer of the WorkCover Authority of New South Wales, make the following Order pursuant to section 61 (2) of the Workers Compensation Act 1987.

Dated this twenty-eighth day of February 2012.

JULIE NEWMAN,  
Acting Chief Executive Officer,  
WorkCover Authority

### Explanatory Note

Treatment by a medical practitioner who is a surgeon is a medical or related treatment covered under the Workers Compensation Act 1987. This Order sets the maximum fees for which an employer is liable under the Act for treatment by a surgeon of an injured worker's work-related injury.

(Note: Treatment by an orthopaedic surgeon is covered by the Workers Compensation (Orthopaedic Surgeon Fees) Order 2012. However, maximum fees under this Order may apply to procedures carried out by an orthopaedic surgeon which are covered by the Workers Compensation (Orthopaedic Surgeon Fees) Order 2012).

The effect of the Order is to prevent a surgeon from recovering from the injured worker or employer any extra charge for treatments covered by the Order.

The Order adopts the items listed as Surgical Procedures in the *List of Medical Services and Fees* published by the Australian Medical Association (AMA).

To bill an AMA item number a surgeon must be confident they have fulfilled the service requirements as specified in the item descriptor. Where a comprehensive item number is used, separate items should not be claimed for any of the individual items included in the comprehensive service.

Where only one service is rendered, only one item should be billed. Where more than one service is rendered on one occasion of service, the appropriate item for each discrete service may be billed, provided that each item fully meets the item descriptor. Where an operation comprises a combination of procedures, which are commonly performed together, and for which there is an AMA item that specifically describes the combination of procedures, then only that item should be billed. The invoice should cover the total episode of treatment.

All surgical invoices must be accompanied by a detailed operation report clearly outlining the mechanism of injury, intra-operative findings and the procedures performed.

The incorrect use of AMA items can result in penalties, including the medical provider being asked to repay monies to WorkCover that the provider has incorrectly received.

## Workers Compensation (Surgeon Fees) Order 2012

**1. Name of Order**

This Order is the Workers Compensation (Surgeon Fees) Order 2012.

**2. Commencement**

This Order commences on 1 January 2012.

**3. Definitions****In this Order (including Schedules A, B and C):**

*the Act* means the Workers Compensation Act 1987.

*Aftercare visits* has the same meaning as in the AMA List and is covered by the surgical procedure fee during the first six weeks following the date of surgery or until wound healing has occurred. However unrelated visits or incidental reasons for visits that are not regarded as routine aftercare should be explained with accounts rendered. The consulting surgeon will issue a "certificate" detailing the worker's fitness for work and anticipated aftercare, on discharge from hospital or after the first post injury consultation.

*After hours consultations* means call-outs to a public or private hospital or a private home for urgent cases before 8.00am or after 6:00pm. This fee is not to be utilised where a consultation is conducted for non-urgent cases outside of these hours.

*Assistant at operation* means a medical practitioner but only where an assistant's fee is allowed for in the Commonwealth Medicare Benefits Schedule, or where indicated in the WorkCover schedule or approved in advance by the insurer.

In accordance with NSW health policy (File No. C17061), assistant fees cannot be charged for WorkCover cases performed in a public hospital when the assistant is a registrar. If the registrar is on rotation to an approved private hospital training rotation, the relevant assistant fee may be charged. Payment of these fees is to be directed into a hospital or departmental trust fund account and the invoice should include details of this account. Workcover reserves the right to conduct an audit of assistant fee payments to ensure their proper distribution into the named trust fund.

*AMA list* means the document entitled *List of Medical Services and Fees* published by the Australian Medical Association and dated 1 November 2011.

*Extended initial consultation* means a consultation involving significant multiple trauma or complex "red flag" spinal conditions (systemic pathology, carcinoma, infection, fracture or nerve impingement) involving a lengthy consultation and extensive physical examination.

*GST* means the goods and services tax payable under the GST Law; and

*GST Law* has the same meaning as in the A New Tax System (Goods and Services Tax) Act 1999 of the Commonwealth.

*Initial consultation and report* covers the first consultation and the report to the referring General Practitioner and insurer.

The report will contain:

- the patient's diagnosis and present condition;
- the patient's likely fitness for pre-injury work or for alternate duties;
- the need for treatment or additional rehabilitation; and
- collateral conditions that are likely to impact on the management of the worker's condition (in accordance with privacy considerations).

Receipt of this information and "certificates" post treatment will provide sufficient information for insurers, employers and rehabilitation providers to develop management plans.

Instrument fee covers procedures where the surgeon supplies all the equipment or a substantial number of specialised instruments in exceptional circumstances and must be justified. This fee does not apply for all operations or if only incidental instruments (non critical) are supplied by the surgeon. Routine items such as loupes are not included.

*Medical practitioner* means a person registered under the Health Practitioner Regulation National Law (NSW) No. 86a in the medical profession.

*Multiple operations or injuries* refers to situations that require two or more operations or for the treatment of two or more injuries carried out at the same time. The fee for the main procedure or injury is to be paid in full as per Schedule A and 75% of the charge specified in Schedule A for each additional item number or injury is payable, unless specifically listed in the Schedule as a multiple procedure item.

*Opinion on file request* includes retrieval of a file from whatever source, reading time, and reporting where a request for such an opinion has been made in writing to the surgeon and in accordance with privacy principles. Fees for this service will not be pre-paid in whole or part.

*Revision surgery* refers to a procedure carried out to correct earlier surgery. Only where the revision surgery is performed by a surgeon other than the original surgeon, shall it attract a fee of 50% of the amount for the principal procedure in the initial surgery, in addition to the fee payable for the new procedure, except where the new procedure is specified as a revision procedure in the AMA list.

Surgical procedures are those listed in the AMA list but do not include the cost of bandages, dressings, plaster of Paris bandages, splints, metallic fixation agents, and prosthetic implants which may be charged in addition to the fee set out in the Schedule A, if purchased by the surgeon. The fee for surgical procedures includes aftercare visits.

**Subsequent consultation** is a consultation not included in the normal aftercare that applies following surgery. The cost of the latter is included in the fee for the surgical procedure.

**Surgeon** means a medical practitioner who is currently a Fellow of the Australasian College of Surgeons. It includes a surgeon who is a staff member at a public hospital providing services at the hospital and a surgeon who is recognised by Medicare Australia as a Specialist Surgeon.

#### 4. Application of Order

This Order applies to treatment provided on or after the commencement date of this Order, whether it relates to an injury received before, on or after that date.

#### 5. Maximum fees for treatment by surgeon

(1) The maximum fee amount for which an employer is liable under the Act for treatment of an injured worker by a surgeon, being treatment of a type specified in Column 1 of Schedule A to this Order, is the corresponding amount specified in Column 3 of that Schedule.

(2) A fee charged by a surgeon for a patient's treatment (including the management of fractures and other conditions) will be in addition to the fee in Schedule A for the original examination and report.

#### 6. Billing items for hand surgery (Schedule B)

Schedule B provides mandatory guidelines that must be followed for billing items used in hand and wrist surgery only.

Table 1 details items that are not applicable to hand surgery procedures.

Table 2 details items with restricted application for hand surgery and where clinical justification is required that they are reasonably necessary given the circumstances of the case.

#### 7. Billing items for shoulder and elbow surgery (Schedule C)

Schedule C provides mandatory guidelines that must be followed for billing items used in shoulder and elbow surgery only.

Any item number where the term "flag" is used in the "Clinical Indication" column highlights a potential exception that will require further justification. Should a surgeon seek an exception to the mandatory guidelines the surgeon must provide a written explanation to support the request. Further expert medical opinion may be sought by WorkCover to assist with approving surgery requests or invoices.

#### 8. GST

An amount fixed by this Order is exclusive of GST. An amount fixed by this Order may be increased by the amount of any GST payable in respect of the service to which the cost relates, and the cost so increased is taken to be the amount fixed by this Order. This clause does not permit a medical practitioner to charge or recover more than the amount of GST payable in respect of the service to which the cost relates.

#### SCHEDULE A – Maximum fees for surgeon

<i>Item</i>	<i>Column 1 Type of service</i>	<i>Column 2 AMA Item(s)</i>	<i>Column 3 Maximum amount</i>
<b>Consultations</b>			
1.	Initial consultation and report	AC500 (MBS 104) AC600 (MBS 6007)	\$280.30
2.	Extended initial consultation and report	AC500 (MBS104) AC600 (MBS 6007)	\$386.10
3.	Subsequent consultation and report	AC510 (MBS 105) AC610 (MBS 6009)	\$193.10
4.	After hours consultation		\$162.00 in addition to consultation fee
<b>Procedures</b>			
5.	Surgical procedures	EA015 (MBS 30001) to MY115 (MBS 50130)	150% of AMA Schedule
6.	Instrument fee	WCO003	\$193.10
7.	Assistant at operation	MZ900	\$323.80 or 20% of the fee for surgical procedures where the assistant fee applies, whichever is greater

8.	Multiple operations or injuries	Primary item number is to be paid in full, and additional item numbers at 75% of scheduled fee
9.	Aftercare visits	As per AMA Schedule
Insurer/lawyer requests		
10.	Opinion on file request	\$193.10
11.	Telephone requests	\$37.40 per 3-5 minute phone call
12.	Lost reports and reprints	\$130.80 per report
13.	Treating specialist reports (where additional information that is not related to the routine injury management of the patient, is requested by either party to a potential or current dispute).	Please refer to the Workplace Injury Management and Workers Compensation (Medical Examinations and Reports) Order 2012 Schedule 2
14.	Fees for providing copies of clinical notes and records	Please refer to the Workers Compensation (Medical Practitioners Fees) Order 2012 – Section 5 (5))

#### SCHEDULE B – BILLING ITEMS USED IN HAND SURGERY

Table 1: Item numbers and descriptors no longer applicable to hand surgery procedures

<i>CMBS item code</i>	<i>AMA item code</i>	<i>Descriptor</i>	<i>Reason for decline</i>
Nil	CV233  CV082	INJECTION OF AN ANAESTHETIC AGENT, ulnar, radial or median nerve of main trunk, one or more of, not being associated with a brachial plexus block  MINOR NERVE BLOCK (specify type) to provide post operative pain relief (this does not include subcutaneous infiltration)	The MBS does not allow a claim for nerve blocks performed as a method of postoperative analgesia. Infiltration is included in both the anaesthetic schedule AND in the surgical item number fee if performed by the surgeon. This item can only be used in circumstances where a formal nerve block is performed by the surgeon as the only form of anaesthesia and no charge is raised for another anaesthetic service.
45051	MG540	CONTOUR RECONSTRUCTION for pathological deformity, insertion of foreign implant (non biological but excluding injection of liquid or semisolid material) by open operation	This relates to the insertion of foreign implant for pathological deformity by an open operation i.e. facial reconstruction and was not intended for usage in hand surgery.
45445	MH480	FREE GRAFTING (split skin) as inlay graft to 1 defect including elective dissection using a mould (including insertion of and removal of mould)	The appropriate item number is MH490./45448.
47954	MR170	TENDON, repair of, not being a service to which another item in this Group applies	This item is from the orthopaedic group of item numbers. There already exist appropriate item numbers in the hand surgery section.
47966	MR210	TENDON OR LIGAMENT TRANSFER, not being a service to which another item in this Group applies	This item is from the orthopaedic group of item numbers. There already exist appropriate item numbers in the hand surgery section.
47969	MR220	TENOSYNOVECTOMY, not being a service to which another item in this Group applies	This item is from the orthopaedic group of item numbers. There already exist appropriate item numbers in the hand surgery section.
47972	MR230	TENDON SHEATH, open operation for tenovaginitis, not being a service to which another item in this Group applies	This item is from the orthopaedic group of item numbers. There already exist appropriate item numbers in the hand surgery section.

<i>CMBS item code</i>	<i>AMA item code</i>	<i>Descriptor</i>	<i>Reason for decline</i>
48403	MS015	PHALANX OR METATARSAL, osteotomy or osteectomy of, with internal fixation	This item is from the orthopaedic group of item numbers and relates to foot surgery only. There already exist appropriate item numbers in the hand surgery section.
50103	MY015	JOINT, arthrotomy of, not being a service to which another item in this Group applies	This item is from the orthopaedic group of item numbers. There already exist appropriate item numbers in the hand surgery section.
50104	MY025	JOINT, synovectomy of, not being a service to which another item in this Group applies	This item is from the orthopaedic group of item numbers. There already exist appropriate item numbers in the hand surgery section.
50109	MY045	JOINT, arthrodesis of, not being a service to which another item in this Group applies	This item is from the orthopaedic group of item numbers. There already exist appropriate item numbers in the hand surgery section.
50127	MY105	JOINT OR JOINTS, arthroplasty of, by any technique not being a service to which another item applies	This item is from the orthopaedic group of item numbers. There already exist appropriate item numbers in the hand surgery section.
60506	OF820	FLUOROSCOPY using a mobile image intensifier, in conjunction with a surgical procedure lasting less than 1 hour, not being a service to which another item in this table applies (R)	This item cannot be claimed for use of image intensification when operated by the surgeon in the absence of a radiographer.
60509	OF824	FLUOROSCOPY using a mobile image intensifier, in conjunction with a surgical procedure lasting 1 hour or more, not being a service associated with a service to which another item in this table applies (R)	This item cannot be claimed for use of image intensification when operated by the surgeon in the absence of a radiographer.
	900001	Workcover certificate	This is for general practitioners and not treating specialists.

Table 2: Item numbers with restricted application for hand surgery – clinical justification required

<i>CMBS item code</i>	<i>AMA item code</i>	<i>Descriptor</i>	<i>Clinical indication</i>
105	AC510	Each attendance SUBSEQUENT to the first in a single course of treatment	Follow up consultations will not be paid within the 6 week period following a procedure as this is included in normal aftercare.
30023	EA075	WOUND OF SOFT TISSUE, traumatic, deep or extensively contaminated, debridement of, under general anaesthesia or regional or field nerve block, including suturing of that wound when performed (Assist.)	This item applies to heavily contaminated wounds and removal of devitalized tissue in deep wounds. The majority of clean lacerations in acute hand injuries will attract item number EA095/30029. Debridements are also not applicable when removing percutaneous wire fixation. There will be a limit of one debridement per digit.
30029	EA095	SKIN AND SUBCUTANEOUS TISSUE OR MUCOUS MEMBRANE, REPAIR OF WOUND OF, other than wound closure at time of surgery, not on face or neck, small (NOT MORE THAN 7CM IN LENGTH), involving deeper tissue, not being a service to which another item in Group 3.4 applies.	This item is for use in wound suture when no other vital tissue is involved. It cannot be used in conjunction with EA075/30023 for the same wound/zone of injury, nor when repair of a deeper structure is also performed and claimed for.

<i>CMBS item code</i>	<i>AMA item code</i>	<i>Descriptor</i>	<i>Clinical indication</i>
30223	EA755	LARGE HAEMATOMA, LARGE ABSCESS, CARBUNCLE, CELLULITIS OR SIMILAR LESION, requiring admission to hospital or day-hospital facility, INCISION WITH DRAINAGE OF (excluding aftercare)	This item cannot be used in conjunction with EA075/30023 for the same wound/zone of injury.
30238	EA825	FASCIA, DEEP, repair of, FOR HERNIATED MUSCLE	This item is rarely indicated and cannot be used in conjunction with: EA075/30023 MR240/47975 MR250/47978 MR260/47981
33815 33818	ET560/ ET570	MAJOR ARTERY OR VEIN OF EXTREMITY, repair of wound of, with restoration of continuity, by lateral suture/MAJOR ARTERY OR VEIN OF EXTREMITY, repair of wound of, with restoration of continuity, by direct anastomosis	This item is applicable for repair of radial, ulnar or brachial arteries proximal to wrist crease.
39312	LN 740	NEUROLYSIS, internal (interfascicular) neurolysis of using microsurgical techniques	This item is never indicated in acute trauma. It is rarely indicated in elective surgery and is reserved for use in revision nerve decompression surgery. This item is not to be used in conjunction with MU400: Wrist carpal tunnel release (division of transverse carpal ligament), by open procedure.
39315	LN750	NERVE TRUNK, nerve graft to, (cable graft) including harvesting of nerve graft using microsurgical techniques	This item can only be charged once per named nerve trunk, regardless of the number and distal distribution of individual cables. This item cannot be used in conjunction with LN790, LN800 or LN810
39318	LN760	CUTANEOUS NERVE (including digital nerve), nerve graft to, using microsurgical techniques	This item cannot be used in conjunction with LN790, LN800 or LN810. This item cannot be used for prosthetic neural tubes or wraps. In this setting, LN 700 or LN710 are applicable.
39324	LN790/ 800	NEURECTOMY, NEUROTOMY or removal of tumour from superficial peripheral nerve, by open operation	This item cannot be used in conjunction with LN810..
39330	LN810	NEUROLYSIS by open operation without transposition, not being a service associated with a service to which Item LN740 applies	This item is not for the identification of nerves during surgical exposure. It is not to be used in combination with LN700. This item is not to be used in conjunction with MU400: Wrist carpal tunnel release (division of transverse carpal ligament) by open procedure. However, LN810 and MU400 can be used together for combined open carpal tunnel release and cubital tunnel release surgery. This item is not to be used in conjunction with ML235 Tendon sheath of hand/wrist open operation for stenosing tenovaginitis.
45203	MH115	SINGLE STAGE LOCAL FLAP, where indicated to repair 1 defect, complicated or large, and excluding flap for male pattern baldness and excluding H-flap or double advancement flap	This item is rarely indicated in the hand and wrist as a large defect will not be readily amenable to a local flap reconstruction. It is not to be used for suturing of traumatic skin flaps.



<i>CMBS item code</i>	<i>AMA item code</i>	<i>Descriptor</i>	<i>Clinical indication</i>
45206	MH125	SINGLE STAGE LOCAL FLAP where indicated to repair 1 defect, on eyelid, nose, lip, ear, neck, hand, thumb, finger or genitals, excluding H-flap or double advancement flap	This item can only be used once for a z-plasty.
45500	MJ025	MICROVASCULAR REPAIR using microsurgical techniques, with restoration of continuity of artery or vein of distal extremity or digit	This item relates to microvascular repair of an artery or vein. This item will not be paid for repair of dorsal veins with volar skin intact, branches of digital arteries, branches of radial/ulnar vessels and venae comitantes of major arteries.  Microvascular repairs distal to the metacarpophalangeal joint will also require clinical documentation of appropriate surgical technique utilising an operating microscope.
45501/ 45502	MJ030/ MJ035	MICROVASCULAR ANASTOMOSIS of artery using microsurgical techniques, for re-implantation of limb or digit/ MICROVASCULAR ANASTOMOSIS of vein using microsurgical techniques, for re-implantation of limb or digit	These items specifically relate to replantation of limb and digit i.e: the amputated portion must be completely detached.
45503	MJ045	MICRO-ARTERIAL or MICRO-VEINOUS graft using microsurgical techniques	This item includes the remuneration for harvesting the graft and performing any microvascular anastomoses to the graft.
45515	MJ075	SCAR, other than on face or neck, NOT MORE THAN 7 CMS IN LENGTH, revision of, as an independent procedure, where undertaken in the operating theatre of a hospital or approved day hospital facility, or where performed by a specialist in the practice of his or her specialty	This item cannot be used in conjunction with other items e.g. nerve repair, tendon repair, flap repair (i.e. intended to be an independent procedure).
45563	MJ245	NEUROVASCULAR ISLAND FLAP, including direct repair of secondary cutaneous defect if performed, excluding flap for male pattern baldness	This item is for a true island flap, elevated on a neurovascular pedicle for an existing traumatic defect. This item is not to be claimed for VY advancement flaps where MH125/45206 is applicable.
46325	ML105	CARPAL BONE replacement or resection arthroplasty using adjacent tendon or other soft tissue including associated tendon transfer or realignment when performed	This item is primarily intended for use in reconstruction for basal thumb arthritis. It is not approved for excision of the pisiform.
46327	ML115	INTER-PHALANGEAL JOINT or METACARPOPHALANGEAL JOINT, arthrotomy of	This item is not to be used in addition to EA075/30023 when arthrotomy is performed to facilitate joint lavage within an open wound.
46330	ML125	INTER-PHALANGEAL JOINT or METACARPOPHALANGEAL JOINT, ligamentous or capsular repair with or without arthrotomy	This item is only permitted for repair of named ligaments where preoperative or intraoperative findings document significant joint instability.
46333	ML135	INTER-PHALANGEAL JOINT or METACARPOPHALANGEAL JOINT, ligamentous repair of using free tissue graft or implant	This item is only permitted for repair of named ligaments using free grafts or alloplast where preoperative or intraoperative findings document significant joint instability. This item cannot be used for reattachment of ligament using a bone anchor. ML125/46330 is the approved number.

<i>CMBS item code</i>	<i>AMA item code</i>	<i>Descriptor</i>	<i>Clinical indication</i>
46336	ML145	INTER-PHALANGEAL JOINT or METACARPOPHALANGEAL JOINT, synovectomy, capsulectomy or debridement of, not being a service associated with any other procedure related to that joint	This item cannot be claimed in conjunction with any other item or procedure related to the joint. This item cannot be used in conjunction with EA075/30023 .
46339	ML155	EXTENSOR tendons or FLEXOR tendons of hand or wrist synovectomy of	This item is <u>not</u> indicated for use with surgery for de Quervain's tenovaginitis (ML235/46363) and is rarely indicated in routine carpal tunnel surgery.
46396	ML345	PHALANX or METACARPAL of the hand, osteotomy or osteectomy of	This item is applicable for removing excess bone formation in an intact bone. This is no longer to be applied to removal of loose pieces of bone in trauma or bone shortening for terminalisation or replantation. This is part of the debridement and is included in EA075/30023 if applicable.
46414	ML405	ARTIFICIAL TENDON PROSTHESIS, INSERTION OF in preparation for tendon grafting	Tenolysis (ML545, ML535 : 46450, 46453) or tenotomy (MR20047963) of the tendon to be grafted cannot be billed with this item
46438	ML485	MALLET FINGER, closed pin fixation of	This item is not to be used in conjunction with MP005/47300
46450/ 46453	ML535/ ML545	EXTENSOR TENDON, TENOLYSIS OF, following tendon injury, repair or graft FLEXOR TENDON, TENOLYSIS OF, following tendon injury, repair or graft	These items are applicable for freeing tendons from scar following previous surgery or trauma. They are not indicated in an acute hand injury. ML545 cannot be claimed in conjunction with release of trigger finger.
46504	ML765	NEUROVASCULAR ISLAND FLAP, for pulp innervation	These items are only to be used for a heterodigital neurovascular island flap used to resurface pulp loss (e.g. Littler flap, first dorsal metacarpal artery or Kite flap).
46513/ 46516	ML795/ ML805	Digital nail of finger or thumb removal of	This item should not be used in association with nailbed repair (ML665/46486 or ML675/46489)
46516	ML805	DIGITAL NAIL OF FINGER OR THUMB, removal of in the operating theatre of a hospital or approved day hospital facility	This item is not to be used in association with primary or secondary nail bed repair (ML665/46486, ML675/46489)
46522	ML825	FLEXOR TENDON SHEATH OF FINGER OR THUMB – open operation and drainage for infection	This item is applicable only for drainage of suppurative flexor tenosynovitis It does not apply to washout of flexor sheath in acute injury.
47306	MP025	Distal PHALANX of FINGER or THUMB treatment of by open reduction	This item is not appropriate to be used in conjunction with ML665/46486 where a distal tuft fracture is manipulated into position.
47920	MR088	BONE GROWTH STIMULATOR, insertion of	This is only indicated where a mechanical bone growth stimulator has been inserted. It is not for the insertion of OP1 or other bone morphogenic proteins in the setting of hand surgery
47921	MR090	ORTHOPAEDIC PIN OR WIRE, insertion of, as an independent procedure	This item cannot be claimed when the k-wire has been used as part of fracture fixation.

CMBS item code	AMA item code	Descriptor	Clinical indication
47927	MR110	BURIED WIRE, PIN OR SCREW, 1 or more of, which were inserted for internal fixation purposes, removal of, in the operating theatre of a hospital or approved day hospital facility – per bone	This item applies for removal of buried k-wire. Where a k-wire or wires cross more than 2 bones, only 1 item number is claimable.
48239/ 47306	MR630/ MR640	BONE GRAFT (with or without internal fixation), not being a service to which another item in this Group applies	These items cannot be claimed in conjunction with fracture fixation numbers or the following item numbers : ML005, ML015, ML355, ML365, ML375, MR560-MR620.
48400	MS005	PHALANX, METATARSAL, ACCESSORY BONE OR SESAMOID BONE, osteotomy or osteectomy of, excluding services to which Item MX660 or MX670 applies	This item is only applicable to sesamoidectomy.
48406	MS025	FIBULA, RADIUS, ULNA, CLAVICLE, SCAPULA (other than acromion), RIB, TARSUS OR CARPUS, osteotomy or osteectomy of	This item <u>is</u> the appropriate number for excision of the pisiform. This item is <u>not</u> appropriate for simple removal of bone prominence, osteophytes or small quantities of excess bone.
49212	MU470	WRIST, arthrotomy of	This item is not to be used in conjunction with excision of primary or recurrent wrist ganglia. (ML725/46500,ML755/46503/)
50106	MY035	JOINT, stabilisation of, involving 1 or more of: repair of capsule, repair of ligament or internal fixation, not being a service to which another item in this Group applies	This item is applicable for stabilization of CMC joints only.

**Additional assistance:**

1. Where questions arise in individual clinical situations supply of additional information will be considered to assist in determinations.
2. In an open fracture wound that requires debridement, a 50% loading for open fracture fixation can be applied. Debridement item 30023/EA075 is not to be used when applying this loading
3. After hours loading for cases only applies when a surgeon is called back to perform a procedure(s) in isolation rather than for cases scheduled after 6.00 pm on a weekday or a routine weekend operating list.

**Requirements for claims for payment**

All claims for payment will need to be accompanied by the following:

1. Detailed operation record including a description of the initial injury, structures that were repaired including the anatomic location and technique of repair.
2. Usage of any of the restricted item numbers (Table 2) should be accompanied by clinical justification in order to process the claim.
3. For any proposed surgery – a list of proposed applicable item numbers will need to be provided prior to approval being given.
4. WorkCover reserves the right to insist on independent clinical assessment prior to the payment of invoices and approvals for surgical procedures.

SCCHEDULE C – Billing Items Used in Shoulder and Elbow Surgery

The Order adopts the *WorkCover Qld Shoulder and Elbow Surgery Guidelines* with minor modifications. These are outlined below and their use is mandatory when billing for shoulder and elbow surgery.

AMA/CMBS item code	Descriptor	Clinical indication
<b>BONE GRAFTS</b>		
MR550/48215	Humerus, bone graft to, with internal fixation	

<i>AMA/CMBS item code</i>	<i>Descriptor</i>	<i>Clinical indication</i>
MR640/48242	Bone graft, with internal fixation	Not being a service to which another item in this group applies
MS005/48400	Phalanx, metatarsal, accessory bone or sesamoid bone, osteotomy or osteectomy of, excluding services to which item MX660 or MX670 applies, any of items MX660, MX670, MR130 or MR140 apply	
MS025/48406	Fibula, radius, ulna, clavicle, scapula (other than acromion), rib, tarsus or carpus, osteotomy or osteectomy of	Excluding services to which items MR130/47933 or MR140/47936 apply Not to be used in combination with MT770/48951 <b>Flag if this item is used in combination with any other shoulder item codes (MT600/48900 to MT800/48960)</b>
MS035/48409	Fibula, radius, ulna, clavicle, scapula (other than acromion), rib, tarsus or carpus, osteotomy or osteectomy of, with internal fixation,	Excluding services to which items MR130/47933 or MR140/47936 apply Not to be used in combination with MT770/48951 <b>Flag if this item is used in combination with any other shoulder items (MT600/48900 to MT800/48960)</b>
MS045/48412	HUMERUS, osteotomy or osteectomy of, excluding services to which items MR130 or MR140 apply	<b>Flag if this item is used for tennis elbow surgery</b>
<b>SHOULDERS</b>		
MT600/48900	Excision or coraco-acromial ligament or removal of calcium deposit from cuff or both	Open operation not arthroscopic Use of this item rarely seen in WorkCover NSW claims <b>Flag if this item is used twice or more</b>
MT610/48903	Decompression of subacromial space by acromioplasty	Open operation, also known as open acromioplasty or subacromial decompression (SAD)
MT620/48906	Repair of rotator cuff, including excision of coraco-acromial ligament	Known as open cuff repair without acromioplasty Not to be used in combination with MT600/48900. If MS025 is performed it cannot be used with MT770
MT630/48909	Repair of rotator cuff, including decompression of subacromial space by acromioplasty	Known as open rotator cuff repair with acromioplasty with excision of AC joint Not being a service to which item MT610/48903 applies <b>Flag if this item is used with MX670/49851</b>
MT640/48912	Shoulder arthrotomy	Use of this item rarely seen in WorkCover NSW claims <b>Flag if this item is used in combination with any other item code for shoulder surgery</b>
MT650/48915	Hemi-arthroplasty	Use of this item rarely seen in WorkCover NSW claims Maybe appropriate for shoulder fractures only
MT660/48918	Total replacement arthroplasty including rotator cuff repair	Use of this item rarely seen in WorkCover NSW claims
MT670/48921	Revision of total replacement arthroplasty	Use of this item rarely seen in WorkCover NSW claims
MT680/48924	Revision of total replacement arthroplasty with bone graft to scapula or humerus	Use of this item rarely seen in WorkCover NSW claims
MT690/48927	Removal of shoulder prosthesis	Use of this item rarely seen in WorkCover NSW claims

<i>AMA/CMBS item code</i>	<i>Descriptor</i>	<i>Clinical indication</i>
MT700/48930	Stabilisation for recurrent anterior/posterior dislocation	Known as open shoulder stabilisation (including repair of labrum) If recurrent, treatment option: highly recommend looking in claimant's history to determine if surgery is to treat the aggravation or pre-existing condition
MT710/48933	Stabilisation for multidirectional dislocation	Mostly used for open procedures
MT720/48936	Synovectomy as an independent procedure	Use of this item rarely seen in WorkCover NSW claims <b>Flag if this item is used in combination with any other item code</b>
MT730/48939	Arthrodesis with synovectomy	Use of this item rarely seen in WorkCover NSW claims <b>Flag if this item is used once or more</b>
MT740/48942	Arthrodesis with synovectomy, removal of prosthesis and bone grafting	Use of this item rarely seen in WorkCover NSW claims <b>Flag if this item is used once or more</b>
MT750/48945	Diagnostic arthroscopy	Not to be used with any <b>arthroscopic</b> procedure of the shoulder region May be used with open surgery i.e. MT630/48909, MT620/48906, MT710/48933
MT760/48948	Arthroscopic surgery, with one or more: removal loose bodies, decompression of calcium deposits, debridement labrum/synovium/rotator cuff, chondroplasty	Not to be used with any other <b>arthroscopic</b> procedure of the shoulder region Preparatory for an open procedure Appropriate with MT620/48906 and MT630/48909, May be used with MT700/48930 and MT710/48933
MT770/48951	Arthroscopic division of the coraco-acromial ligament including acromioplasty	Not to be used with any other <b>arthroscopic</b> procedure of the shoulder region Not to be used in combination with EA365/30111 or MT780/48954
MT780/48954	Arthroscopic total synovectomy including release of contracture (shoulder)	Known as frozen shoulder release; stand alone item code Not to be used with any other <b>arthroscopic</b> procedure of the shoulder region Not to be used in combination with MT770/48951 <b>Flag if this item is used with any other item number for shoulder surgery</b>
MT790/48957	Arthroscopic stabilisation for recurrent instability including labral tear or reattachment	Not to be used with any other <b>arthroscopic</b> procedure of the shoulder region If recurrent treatment option, highly recommend looking in claimant's history to determine if surgery is to treat the aggravation or pre-existing condition <b>Flag if this item number used with any other item number for shoulder surgery</b>
MT800/48960	Reconstruction or repair of, including rotator cuff by arthroscopic, arthroscopic assisted or mini open means; arthroscopic acromioplasty; or resection of acromioclavicular joint by separate approach	Not to be used with any procedure of the shoulder region Not to be used in combination with any other item number for shoulder surgery May be used with 18256 Not to be used with <b>EA365/30111</b> <b>Flag if this item number is used in combination with MT770/48951 or MT790/48957</b>

<i>AMA/CMBS item code</i>	<i>Descriptor</i>	<i>Clinical indication</i>
<b>ELBOW</b>		
MU035/49100	Arthrotomy with removal one or more lavage, removal of loose body or division of contracture	Not to be used for tennis elbow surgery
MU045/49103	Ligamentous stabilisation	Not to be used in conjunction with LN810/39330 Acceptable to use LN810/39330 if the ulnar nerve requires mobilisation or decompression at the time of stabilisation (operation notes should reflect this). Transposition LN770/39321 is commonly used. Ulnar nerve transposition can occur frequently in large elbow operations. It may be necessary to perform neurolysis of more than one nerve such as radial and ulnar, if there was significant previous injury or previous surgery
MU055/49106	Arthrodesis with synovectomy	Use of this item rarely seen in WorkCover NSW claims <b>Flag if this item code is used</b>
MU065/49109	Total synovectomy	Known as <b>common contracture release</b> Use of this item rarely seen in WorkCover NSW claims May be appropriate with oosteotomy ie. MS045/48412 or MS025/ 48406 <b>Flag if used</b>
MU075/49112	Silastic replacement of radial head	Seen with fractures and dislocations May be associated with other item numbers i.e. MU045/49103 or MU075/49112 Not to be used in combination with MU065/49109 <b>Flag if used</b>
MU085/49115	Total joint replacement	Use of this item rarely seen in WorkCover NSW claims <b>Flag if used</b>
MU086/49116	Total replacement arthroplasty, revision including removal of prosthesis	Use of this item rarely seen in WorkCover NSW claims <b>Flag if used</b>
MU087/49117	Total replacement arthroplasty, revision procedure with bone grafting or removal or prosthesis	Use of this item rarely seen in WorkCover NSW claims <b>Flag if used</b>
MU095/49118	Diagnostic arthroscopy	Not to be used with any other <b>arthroscopic</b> procedure of the elbow region Appropriate for use with open elbow surgery
MU105/49121	Arthroscopic surgery of elbow	Involving any one or more of: drilling of defect, removal of loose body, release of contracture or adhesions, chondroplasty, or osteoplasty (not a service associated with any other <b>arthroscopic</b> procedure of the elbow joint)
<b>OTHER</b>		
EA365/30111	Bursa (large) including olecranon, calcaneum or patella, excision of	May be used in combination with olecranon bursa <b>Flag if used in combination with any shoulder surgery</b> Not to be used in combination with MT800/48960
LN810/39330	Neurolysis by open operation without transposition	Not being a service associated with a service to which item LN740/39312 applies Can be used in combination with elbow surgery Not to be used in combination with MT760/48948 <b>Flag if used in combination with any item codes for shoulder surgery</b>

<i>AMA/CMBS item code</i>	<i>Descriptor</i>	<i>Clinical indication</i>
<b>LIMB LENGTHENING AND DEFORMITY CORRECTION</b>		
MZ330/50405	Elbow, flexorplasty, or tendon transfer to restore elbow function	May be seen in distal biceps reconstruction Use of this item rarely seen in WorkCover NSW claims – set of item numbers address congenital conditions <b>Flag if used</b>
<b>OTHER JOINTS</b>		
MY035/50106	Joint, stabilisation of, involving one or more of: repair of capsule, repair of ligament or internal fixation	Not being a service to which another item in this Group applies Appropriate to be used with MT610/48903 and MR210/47966
MY055/50112	Cicatricial flexion or extension contraction of joint, correction of, involving tissues deeper than skin and subcutaneous tissue, not being a service to which another item in this group applies	Not to be used with any other <b>arthroscopic</b> procedure of the shoulder region Not to be used in combination with item code MT780/48954 <b>Flag if used in combination with any item code for elbow and shoulder surgery</b> Implies a release for stiffness after injury or surgery. May occur with other numbers in relation to a large release of the stiff elbow. Three to five item numbers should be in association with an operation that took two to three hours and is usually a revision situation or after serious trauma. The complexity should be reflected in the history of injury, number of prior operations, duration of surgery, complexity of the operation note.
MY065/50115	Joint or joints, manipulation of, performed in the operating theatre of a hospital	Not to be used for an ‘examination’ of a joint under general anaesthetic prior to an operation, where the general anaesthetic is for the operation itself Not being a service associated with a service to which another item in this group applies <b>Flag if this item code is used two or more times</b>
MY105/50127	Joint or joints, arthroplasty of, by any technique	Not being a service to which another item applies Not to be used in combination with any item code for shoulder, elbow or sternoclavicular surgery
<b>GENERAL</b>		
MP455/47429	Humerus, proximal, treatment of fracture of, by open reduction	
MP465/47432	Humerus, proximal, treatment of intra-articular fracture of, by open reduction	
MP485/47438	Humerus, proximal, treatment of fracture of, and associated dislocation of shoulder, by open reduction	
MP495/47441	Humerus, proximal, treatment of intra-articular fracture of, and associated dislocation of shoulder, by open reduction	
MR020/47903	Epicondylitis, open operation for	Tennis elbow Not to be used in combination with MS045/48412 <b>Flag if used</b>

<i>AMA/CMBS item code</i>	<i>Descriptor</i>	<i>Clinical indication</i>
MR110/47927	Buried wire, pin or screw, one or more of, which were inserted for internal fixation purposes, removal of, in the operating theatre of a hospital	Per bone
MR120/47930	Plate, rod or nail and associated wires, pins or screws, one or more of, all of which were inserted for internal fixation purposes, removal of	Not being a service associated with a service to which item MR100/47924 or MR110/47927 applies – per bone
MR170/47954	Tendon, repair of, as an independent procedure	Can be used in treating biceps tenodesis <b>Flag if used with any other item code</b>
MR190/47960	Tenotomy, subcutaneous	Not being a service to which another item in this group applies
MR200/47963	Tenotomy, open, with or without tenoplasty	Not being a service to which another item in this group applies Could be used in combination with MT770/48951 or MT800/48960
MR210/47966	Tendon or ligament, transfer,	As an independent procedure Could be used in combination with MT770/48951 or MT800/48960
MR220/47969	Tenosynovectomy	Not being a service to which another item in this group applies Should not be used for tennis elbow or shoulder surgery <b>Flag if used for shoulder or elbow procedures</b>



**WORKERS COMPENSATION (MEDICAL PRACTITIONER FEES) ORDER 2012**

under the Workers Compensation Act 1987

I, JULIE NEWMAN, Acting Chief Executive Officer of the WorkCover Authority of New South Wales, make the following Order pursuant to section 61 (2) of the Workers Compensation Act 1987.

Dated this twenty-eighth day of February 2012.

JULIE NEWMAN,  
Acting Chief Executive Officer  
WorkCover Authority

**EXPLANATORY NOTE**

Treatment by a Medical Practitioner is one of the categories of medical or related treatment covered under the Workers Compensation Act 1987. This Order sets the maximum fees for which an employer is liable under the Act for treatment by a Medical Practitioner of an injured worker's work-related injury.

The effect of the Order is to prevent a Medical Practitioner from recovering from the injured worker or employer any extra charge for treatments covered by the Order.

The Order does not apply to services provided by a Specialist Surgeon.

The Order adopts the *List of Medical Services and Fees* published by the Australian Medical Association (AMA). To bill an AMA item, a Medical Practitioner must be confident they have fulfilled the service requirements as specified in the item descriptor. Where a comprehensive item is used, separate items cannot be claimed for any of the individual items included in the comprehensive service.

The incorrect use of AMA items can result in penalties, including the medical provider being asked to repay monies to WorkCover that the provider has incorrectly received.

Workers Compensation (Medical Practitioner Fees) Order 2012

**1. Name of Order**

This Order is the Workers Compensation (Medical Practitioner Fees) Order 2012

**2. Commencement**

This Order commences on 1 January 2012.

**3. Definitions**

In this Order:

*the Act* means the *Workers Compensation Act 1987*.

*After hours services* applies in an emergency where the clinic is not normally open at that time, and urgent treatment is provided. This fee is not to be utilised in the situation where a consultation is conducted within the advertised hours of a clinic.

*AMA List* means the document entitled *List of Medical Services and Fees* published by the Australian Medical Association and dated 1 November 2011.

*Assistant at Operation* means a Medical Practitioner, but only where an assistant's fee is allowed for in the Commonwealth Medical Benefits Schedule, or where indicated in the WorkCover Order or approved in advance by the insurer. An assistant fee may only be applicable for surgical procedures EA010 to MY115.

In accordance with NSW health policy (File No. C17061), assistant fees cannot be charged for WorkCover cases performed in a public hospital when the assistant is a Registrar. If the Registrar is on rotation to an approved private hospital training rotation, the relevant assistant fee may be charged. Payment of these fees is to be directed into a hospital or departmental trust fund account and the invoice should include details of this account. Workcover reserves the right to conduct an audit of assistant fee payments to ensure their proper distribution into the named trust fund.

*GST* means the goods and services tax payable under the GST Law; and

*GST Law* has the same meaning as in the A New Tax System (Goods and Services Tax) Act 1999 (Cth).

*Medical Practitioner* means a person registered under the Health Practitioner Regulation National Law (NSW) No. 86a in the medical profession who is not a Specialist Surgeon.

*Specialist Surgeon* means a Medical Practitioner who holds a fellowship of the Royal Australian College of Surgeons.

**4. Application of Order**

This Order applies to treatment provided on or after the commencement date of this Order, whether it relates to an injury received before, on or after that date.

**5. Maximum fees for Medical Practitioners**

(1) This clause applies to medical and related treatment provided by a Medical Practitioner in respect of which a fee is specified in the AMA List, except:

- (a) Medical services identified in the AMA List by AMA numbers AC500, AC510, AC520, AC530, AC600 and AC610 (Professional Attendances by a Specialist), if these medical services are provided by a Specialist Surgeon;
  - (b) Medical services identified in the AMA List by AMA Numbers EA010 to MZ705 (Surgical Operations) if these medical services are provided by a Specialist Surgeon;
  - (c) Medical services identified in the AMA List by AMA Number MZ900 (Assistant Surgeon's fee);
  - (d) Medical services identified in the AMA List by AMA numbers OP200, OP210 and OP220 (magnetic resonance imaging – MRI).
- (2) The maximum amount payable for magnetic resonance imaging (MRI) is \$700 for a single region or two contiguous regions, and \$1050 for more than two contiguous regions.
  - (3) The maximum amount payable for a medical certificate is \$20.00.
  - (4) The maximum hourly rate payable to a General Practitioner is \$242.90. The maximum hourly rate payable to a Specialist is \$336.30. The hourly rate may cover, for example, case conferences, visits to worksites and additional reports requested from treating doctors. These should be billed under the WorkCover payment classification code WCO002.
  - (5) The maximum fee for providing copies of medical records (including Specialist's notes and reports) is \$30 (for 33 pages or less) and an additional \$1.00 per page if more than 33 pages.
  - (6) Subject to subclauses (1), (2), (3), (4), (5), and clause 7 (Nil fee for certain medical services), the maximum amount for which an employer is liable under the Act for any claim for medical or related treatment to which this clause applies is the fee listed, in respect of the medical or related treatment concerned, in the AMA List.

#### **6. Specialist consultations**

The initial Specialist consultation fee includes the first consultation and report to the referring General Practitioner copied to the insurer.

The report will contain:

- (a) The patient's diagnosis and present condition;
- (b) The patient's likely fitness for pre-injury work or alternate duties;
- (c) The need for treatment or additional rehabilitation; and
- (d) Collateral conditions that are likely to impact on the management of the worker's condition (in accordance with privacy considerations).

Additional reports requested that do not relate to the routine management of a worker's injury and are not required as part of a dispute or potential dispute should be billed under WCO002 and at a rate of \$336.30/hour (plus GST) for Specialists. If the report is requested as part of a current or potential dispute, then the Workplace Injury Management and Workers Compensation (Medical Examination and Reports) Order 2012 applies.

#### **7. Nil fee for certain medical services**

The AMA List includes items that are not relevant to medical services provided to injured workers. As such, the fee set for the following items is nil:

- (a) General Practitioner – Urgent attendances after hours items (Medical services identified in the AMA List by AMA number AA007)
- (b) All time based General Practitioner fees items (Medical services identified in the AMA List by AMA numbers AA190 – AA320)
- (c) Enhanced primary care items (Medical services identified in the AMA List by AMA numbers AA501 – AA850)
- (d) Telehealth items (Medical services identified in the AMA List by AMA numbers AP050 – AP105).

#### **8. Goods and Services Tax**

An amount fixed by this Order is exclusive of GST. An amount fixed by this Order may be increased by the amount of any GST payable in respect of the service to which the cost relates, and the cost so increased is taken to be the amount fixed by this Order. This clause does not permit a Medical Practitioner to charge or recover more than the amount of GST payable in respect of the service to which the cost relates.

**WORKERS COMPENSATION ORTHOPAEDIC SURGEON FEES) ORDER 2012**

under the Workers Compensation Act 1987

I, JULIE NEWMAN, Acting Chief Executive Officer of the WorkCover Authority of New South Wales, make the following Order pursuant to section 61 (2) of the Workers Compensation Act 1987.

Dated this twenty-eighth day of February 2012.

JULIE NEWMAN,  
Acting Chief Executive Officer  
WorkCover Authority

Explanatory Note

Treatment by a medical practitioner who is an orthopaedic surgeon is a medical or related treatment covered under the Workers Compensation Act 1987. This Order sets the maximum fees for which an employer is liable under the Act for treatment by an orthopaedic surgeon of an injured worker's work-related injury.

The effect of the Order is to prevent an orthopaedic surgeon from recovering from the injured worker or employer any extra charge for treatments covered by the Order.

The Order adopts the items listed as Orthopaedic Procedures in the *List of Medical Services and Fees* published by the Australian Medical Association (AMA).

To bill an AMA item number a surgeon must be confident they have fulfilled the service requirements as specified in the item descriptor. Where a comprehensive item number is used, separate items should not be claimed for any of the individual items included in the comprehensive service.

Where only one service is rendered, only one item should be billed. Where more than one service is rendered on one occasion of service, the appropriate item for each discrete service may be billed, provided that each item fully meets the item descriptor. Where an operation comprises a combination of procedures which are commonly performed together and for which there is an AMA item that specifically describes the combination of procedures then only that item should be billed. The invoice should cover the total episode of treatment.

All surgical invoices must be accompanied by a detailed operation report clearly outlining the mechanism of injury, intra-operative findings and the procedures performed.

The incorrect use of AMA items can result in penalties, including the medical provider being asked to repay monies to WorkCover that the provider has incorrectly received.

Workers Compensation (Orthopaedic Surgeon Fees) Order 2012

**1. Name of Order**

This Order is the Workers Compensation (Orthopaedic Surgeon Fees) Order 2012.

**2. Commencement**

This Order commences on 1 January 2012.

**3. Definitions**

In this Order (including Schedule A):

*the Act* means the *Workers Compensation Act 1987*.

*Aftercare visits* has the same meaning as in the AMA List and is covered by the surgical procedure fee during the first six weeks following the date of surgery or until wound healing has occurred. However, unrelated visits or incidental reasons for visits that are not regarded as routine aftercare should be explained with accounts rendered. The consulting surgeon will issue a "certificate" detailing the worker's fitness for work and anticipated after-care on discharge from hospital or after the first post injury consultation.

*After hours consultations* means call-outs to a public or private hospital or a private home for urgent cases before 8.00am or after 6:00pm. This fee is not to be utilised where a consultation is conducted for non-urgent cases outside of these hours.

*Assistant at operation* means a medical practitioner, but only where an assistant's fee is allowed for in the Commonwealth Medicare Benefits Schedule, or where indicated in the WorkCover schedule or approved in advance by the insurer. An assistant fee may only be applicable for surgical procedures EA010 to MY115.

In accordance with NSW health policy (File No. C17061), assistant fees cannot be charged for WorkCover cases performed in a public hospital when the assistant is a registrar. If the registrar is on rotation to an approved private hospital training rotation, the relevant assistant fee may be charged. Payment of these fees is to be directed into a hospital or departmental trust fund account and the invoice should include details of this account. Workcover reserves the right to conduct an audit of assistant fee payments to ensure their proper distribution into the named trust fund.

*AMA list* means the document entitled *List of Medical Services and Fees* published by the Australian Medical Association and dated 1 November 2011.

**Extended initial consultation** means a consultation involving significant multiple trauma or complex “red flag” spinal conditions (systemic pathology, carcinoma, infection, fracture or nerve impingement) involving a lengthy consultation and extensive physical examination.

**GST** means the goods and services tax payable under the GST Law; and

**GST Law** has the same meaning as in the A New Tax System (Goods and Services Tax) Act 1999 of the Commonwealth.

**Initial consultation and report** covers the first consultation and the report to the referring General Practitioner and insurer.

The report will contain:

- the patient’s diagnosis and present condition;
- the patient’s likely fitness for pre-injury work or for alternate duties;
- the need for treatment or additional rehabilitation; and
- collateral conditions that are likely to impact on the management of the worker’s condition (in accordance with privacy considerations).

Receipt of this information and “certificates” post treatment will provide sufficient information for insurers, employers and rehabilitation providers to develop management plans.

Instrument fee covers procedures where the surgeon supplies all the equipment or a substantial number of specialised instruments in exceptional circumstances and must be justified. This fee does not apply for all operations or if only incidental instruments (non critical) are supplied by the surgeon. Routine items such as loupes are not included.

**Medical practitioner** means a person registered under the Health Practitioner Regulation National Law (NSW) No. 86a in the medical profession.

**Multiple operations or injuries** refers to situations that require two or more operations or for the treatment of two or more injuries carried out at the same time. The fee for the main procedure or injury is to be paid in full as per Schedule A and 75% of the charge specified in Schedule A for each additional item number or injury is payable, unless specifically listed in the Schedule as a multiple procedure item.

**Opinion on file request** includes retrieval of a file from whatever source, reading time, and reporting where a request for such an opinion has been made in writing to the orthopaedic surgeon and in accordance with privacy principles. Fees for this service will not be pre-paid in whole or part.

Orthopaedic procedures are those listed in the AMA list but do not include the cost of bandages, dressings, plaster of Paris bandages, splints, metallic fixation agents, and prosthetic implants which may be charged in addition to the fee set out in the Schedule A, if purchased by the surgeon. The fee for orthopaedic procedures includes aftercare visits.

**Orthopaedic surgeon** means a medical practitioner who is currently a Fellow of the Australian Orthopaedic Association or who is recognised by Medicare Australia as a specialist in orthopaedic surgery. It includes an orthopaedic surgeon who is a staff member at a public hospital providing services at the hospital.

**Revision surgery** refers to a procedure carried out to correct earlier surgery. Only where the revision surgery is performed by a surgeon other than the original surgeon, shall it attract a fee of 50% of the amount for the principal procedure in the initial surgery, in addition to the fee payable for the new procedure, except where the new procedure is specified as a revision procedure in the AMA list.

**Subsequent consultation** is a consultation not included in the normal aftercare that applies following surgery. The cost of the latter is included in the fee for the orthopaedic procedure.

#### 4. Application of Order

This Order applies to treatment provided on or after the commencement date of this Order, whether it relates to an injury received before, on or after that date.

#### 5. Maximum fees for treatment by orthopaedic surgeon

- (1) The maximum fee amount for which an employer is liable under the Act for treatment of an injured worker by an orthopaedic surgeon, being treatment of a type specified in Column 1 of Schedule A to this Order, is the corresponding amount specified in Column 3 of that Schedule.
- (2) A fee charged by an orthopaedic surgeon for a patient’s treatment (including the management of fractures and other conditions) will be in addition to the fee in Schedule A for the original examination and report.

#### 6. Billing items for hand surgery (Schedule B)

Schedule B provides mandatory guidelines for billing items used in hand and wrist surgery only.

Table 1 details items that are not applicable to hand surgery procedures.

Table 2 details items with restricted application for hand surgery and where clinical justification is required that they are reasonably necessary given the circumstances of the case.

#### 7. Billing items for shoulder and elbow surgery (Schedule C)

Schedule C provides mandatory guidelines that must be followed for billing items used in shoulder and elbow surgery only.

Any item number where the term “flag” is used in the Clinical Indication column highlights a potential exception that will require further justification. Should a surgeon seek an exception to the guidelines, the surgeon must provide a written explanation to support the request. Further expert medical opinion may be sought by WorkCover to assist with approving surgery requests or invoices.

### 8. GST

An amount fixed by this Order is exclusive of GST. An amount fixed by this Order may be increased by the amount of any GST payable in respect of the service to which the cost relates, and the cost so increased is taken to be the amount fixed by this Order. This clause does not permit a medical practitioner to charge or recover more than the amount of GST payable in respect of the service to which the cost relates.

#### SCHEDULE A – Maximum Fees for Orthopaedic Surgeons

<i>Item</i>	<i>Column 1 Type of service</i>	<i>Column 2 AMA Item(s)</i>	<i>Column 3 Maximum amount</i>
<b>Consultations</b>			
1.	Initial consultation and report	AC500 (MBS 104)	\$280.30
2.	Extended initial consultation and report	AC500 (MBS104)	\$386.10
3.	Subsequent consultation	AC510 (MBS 105)	\$193.10
4.	After hours consultation		\$162.00 in addition to consultation fee
<b>Procedures</b>			
5.	Orthopaedic procedures	ML005 (MBS 46300) to MY115 (MBS 50130)	150% of AMA Schedule
6.	Instrument fee	WCO003	\$193.10
7.	Assistant at operation	MZ900	\$323.80 or 20% of the fee for surgical procedures where the assistant fee applies, whichever is greater
8.	Multiple operations or injuries		Primary item number is to be paid in full, and additional item numbers at 75% of scheduled fee
9.	Aftercare visits		As per AMA Schedule
<b>Insurer/lawyer requests</b>			
10.	Opinion on file request		\$193.10
11.	Telephone requests		\$37.40 per 3-5 minute phone call
12.	Lost reports and reprints		\$130.80 per report
13.	Treating Specialist Report (where additional information that is not related to the routine injury management of the patient, is requested by either party to a potential or current dispute)		Please refer to the Workplace Injury Management and Workers Compensation (Medical Examinations and Reports) Order 2012 Schedule 2
14.	Fees for providing copies of clinical notes and records		Please refer to the Workers Compensation (Medical Practitioners Fees) Order 2012 – Section 5 (5)

## SCHEDULE B – Billing Items used in Hand Surgery

Table 1: Item numbers and descriptors no longer applicable to hand surgery procedures

<i>CMBS item code</i>	<i>AMA item code</i>	<i>Descriptor</i>	<i>Reason for decline</i>
Nil	CV233  CV082	INJECTION OF AN ANAESTHETIC AGENT, ulnar, radial or median nerve of main trunk, one or more of, not being associated with a brachial plexus block MINOR NERVE BLOCK (specify type) to provide post operative pain relief (this does not include subcutaneous infiltration)	The MBS does not allow a claim for nerve blocks performed as a method of postoperative analgesia. Infiltration is included in both the anaesthetic schedule AND in the surgical item number fee if performed by the surgeon. This item can only be used in circumstances where a formal nerve block is performed by the surgeon as the only form of anaesthesia and no charge is raised for another anaesthetic service.
45051	MG540	CONTOUR RECONSTRUCTION for pathological deformity, insertion of foreign implant (non biological but excluding injection of liquid or semisolid material) by open operation	This relates to the insertion of foreign implant for pathological deformity by an open operation i.e. facial reconstruction and was not intended for usage in hand surgery.
45445	MH480	FREE GRAFTING (split skin) as inlay graft to 1 defect including elective dissection using a mould (including insertion of and removal of mould)	The appropriate item number is MH490/45448.
47954	MR170	TENDON, repair of, not being a service to which another item in this Group applies	This item is from the orthopaedic group of item numbers. There already exist appropriate item numbers in the hand surgery section.
47966	MR210	TENDON OR LIGAMENT TRANSFER, not being a service to which another item in this Group applies	This item is from the orthopaedic group of item numbers. There already exist appropriate item numbers in the hand surgery section.
47969	MR220	TENOSYNOVECTOMY, not being a service to which another item in this Group applies	This item is from the orthopaedic group of item numbers. There already exist appropriate item numbers in the hand surgery section.
47972	MR230	TENDON SHEATH, open operation for tenovaginitis, not being a service to which another item in this Group applies	This item is from the orthopaedic group of item numbers. There already exist appropriate item numbers in the hand surgery section.
48403	MS015	PHALANX OR METATARSAL, osteotomy or osteectomy of, with internal fixation	This item is from the orthopaedic group of item numbers and relates to foot surgery only. There already exist appropriate item numbers in the hand surgery section.
50103	MY015	JOINT, arthrotomy of, not being a service to which another item in this Group applies	This item is from the orthopaedic group of item numbers. There already exist appropriate item numbers in the hand surgery section.
50104	MY025	JOINT, synovectomy of, not being a service to which another item in this Group applies	This item is from the orthopaedic group of item numbers. There already exist appropriate item numbers in the hand surgery section.
50109	MY045	JOINT, arthrodesis of, not being a service to which another item in this Group applies	This item is from the orthopaedic group of item numbers. There already exist appropriate item numbers in the hand surgery section.

<i>CMBS item code</i>	<i>AMA item code</i>	<i>Descriptor</i>	<i>Reason for decline</i>
50127	MY105	JOINT OR JOINTS, arthroplasty of, by any technique not being a service to which another item applies	This item is from the orthopaedic group of item numbers. There already exist appropriate item numbers in the hand surgery section.
60506	OF820	FLUOROSCOPY using a mobile image intensifier, in conjunction with a surgical procedure lasting less than 1 hour, not being a service to which another item in this table applies (R)	This item cannot be claimed for use of image intensification when operated by the surgeon in the absence of a radiographer.
60509	OF824	FLUOROSCOPY using a mobile image intensifier, in conjunction with a surgical procedure lasting 1 hour or more, not being a service associated with a service to which another item in this table applies (R)	This item cannot be claimed for use of image intensification when operated by the surgeon in the absence of a radiographer.
	900001	Workcover certificate	This is for general practitioners and not treating specialists.

Table 2: Item numbers with restricted application for hand surgery – clinical justification required

<i>CMBS item code</i>	<i>AMA item code</i>	<i>Descriptor</i>	<i>Clinical indication</i>
105	AC510	Each attendance SUBSEQUENT to the first in a single course of treatment	Follow up consultations will not be paid within the 6 week period following a procedure as this is included in normal aftercare.
30023	EA075	WOUND OF SOFT TISSUE, traumatic, deep or extensively contaminated, debridement of, under general anaesthesia or regional or field nerve block, including suturing of that wound when performed (Assist.)	This item applies to heavily contaminated wounds and removal of devitalized tissue in deep wounds. The majority of clean lacerations in acute hand injuries will attract item number EA095/30029. Debridements are also not applicable when removing percutaneous wire fixation. There will be a limit of one debridement per digit.
30029	EA095	SKIN AND SUBCUTANEOUS TISSUE OR MUCOUS MEMBRANE, REPAIR OF WOUND OF, other than wound closure at time of surgery, not on face or neck, small (NOT MORE THAN 7CM IN LENGTH), involving deeper tissue, not being a service to which another item in Group 3.4 applies.	This item is for use in wound suture when no other vital tissue is involved. It cannot be used in conjunction with 30023 (EA075) for the same wound/zone of injury, nor when repair of a deeper structure is also performed and claimed for.
30223	EA755	LARGE HAEMATOMA, LARGE ABSCESS, CARBUNCLE, CELLULITIS OR SIMILAR LESION, requiring admission to hospital or day-hospital facility, INCISION WITH DRAINAGE OF (excluding aftercare)	This item cannot be used in conjunction with 30023 (EA075) for the same wound/zone of injury.
30238	EA825	FASCIA, DEEP, repair of, FOR HERNIATED MUSCLE	This item is rarely indicated and cannot be used in conjunction with: EA075/30023, MR240/47975, MR250/47978, MR260/47981.

<i>CMBS item code</i>	<i>AMA item code</i>	<i>Descriptor</i>	<i>Clinical indication</i>
33815 33818	ET560/ ET570	MAJOR ARTERY OR VEIN OF EXTREMITY, repair of wound of, with restoration of continuity, by lateral suture/MAJOR ARTERY OR VEIN OF EXTREMITY, repair of wound of, with restoration of continuity, by direct anastomosis	This item is applicable for repair of radial, ulnar or brachial arteries proximal to wrist crease.
39312	LN 740	NEUROLYSIS, internal (interfascicular) neurolysis of using microsurgical techniques	This item is never indicated in acute trauma. It is rarely indicated in elective surgery and is reserved for use in revision nerve decompression surgery. This item is not to be used in conjunction with MU400: Wrist carpal tunnel release (division of transverse carpal ligament), by open procedure.
39315	LN750	NERVE TRUNK, nerve graft to, (cable graft) including harvesting of nerve graft using microsurgical techniques	This item can only be charged once per named nerve trunk, regardless of the number and distal distribution of individual cables.  This item cannot be used in conjunction with LN790, LN800 or LN810
39318	LN760	CUTANEOUS NERVE (including digital nerve), nerve graft to, using microsurgical techniques	This item cannot be used in conjunction with LN790, LN800 or LN810. This item cannot be used for prosthetic neural tubes or wraps. In this setting, LN 700 or LN710 are applicable.
39324	LN790/ 800	NEURECTOMY, NEUROTOMY or removal of tumour from superficial peripheral nerve, by open operation	This item cannot be used in conjunction with LN810.
39330	LN810	NEUROLYSIS by open operation without transposition, not being a service associated with a service to which Item LN740 applies	This item is not for the identification of nerves during surgical exposure. It is not to be used in combination with LN700.  This item is not to be used in conjunction with MU400: Wrist carpal tunnel release (division of transverse carpal ligament) by open procedure. However, LN810 and MU400 can be used together for combined open carpal tunnel release and cubital tunnel release surgery.  This item is not to be used in conjunction with ML235 Tendon sheath of hand/wrist open operation for stenosing tenovaginitis.
45203	MH115	SINGLE STAGE LOCAL FLAP, where indicated to repair 1 defect, complicated or large, and excluding flap for male pattern baldness and excluding H-flap or double advancement flap	This item is rarely indicated in the hand and wrist as a large defect will not be readily amenable to a local flap reconstruction. It is not to be used for suturing of traumatic skin flaps.
45206	MH125	SINGLE STAGE LOCAL FLAP where indicated to repair 1 defect, on eyelid, nose, lip, ear, neck, hand, thumb, finger or genitals, excluding H-flap or double advancement flap	This item can only be used once for a z-plasty.



<i>CMBS item code</i>	<i>AMA item code</i>	<i>Descriptor</i>	<i>Clinical indication</i>
45500	MJ025	MICROVASCULAR REPAIR using microsurgical techniques, with restoration of continuity of artery or vein of distal extremity or digit	This item relates to microvascular repair of an artery or vein. This item will not be paid for repair of dorsal veins with volar skin intact, branches of digital arteries, branches of radial/ulnar vessels and venae comitantes of major arteries. Microvascular repairs distal to the metacarpophalangeal joint will also require clinical documentation of appropriate surgical technique utilising an operating microscope.
45501/ 45502	MJ030/ MJ035	MICROVASCULAR ANASTOMOSIS of artery using microsurgical techniques, for re-implantation of limb or digit/ MICROVASCULAR ANASTOMOSIS of vein using microsurgical techniques, for re-implantation of limb or digit	These items specifically relate to replantation of limb and digit i.e. The amputated portion must be completely detached.
45503	MJ045	MICRO-ARTERIAL or MICRO-VEINOUS graft using microsurgical techniques	This item includes the remuneration for harvesting the graft and performing any microvascular anastomoses to the graft.
45515	MJ075	SCAR, other than on face or neck, NOT MORE THAN 7 CMS IN LENGTH, revision of, as an independent procedure, where undertaken in the operating theatre of a hospital or approved day hospital facility, or where performed by a specialist in the practice of his or her specialty	This item cannot be used in conjunction with other items e.g. nerve repair, tendon repair, flap repair (i.e. intended to be an independent procedure).
45563	MJ245	NEUROVASCULAR ISLAND FLAP, including direct repair of secondary cutaneous defect if performed, excluding flap for male pattern baldness	This item is for a true island flap, elevated on a neurovascular pedicle for an existing traumatic defect. This item is not to be claimed for VY advancement flaps where MH125/45206 is applicable.
46325	ML105	CARPAL BONE replacement or resection arthroplasty using adjacent tendon or other soft tissue including associated tendon transfer or realignment when performed	This item is primarily intended for use in reconstruction for basal thumb arthritis. It is not approved for excision of the pisiform.
46327	ML115	INTER-PHALANGEAL JOINT or METACARPOPHALANGEAL JOINT, arthrotomy of	This item is not to be used in addition to EA075/30023 when arthrotomy is performed to facilitate joint lavage within an open wound.
46330	ML125	INTER-PHALANGEAL JOINT or METACARPOPHALANGEAL JOINT, ligamentous or capsular repair with or without arthrotomy	This item is only permitted for repair of named ligaments where preoperative or intraoperative findings document significant joint instability.
46333	ML135	INTER-PHALANGEAL JOINT or METACARPOPHALANGEAL JOINT, ligamentous repair of using free tissue graft or implant	This item is only permitted for repair of named ligaments using free grafts or alloplast where preoperative or intraoperative findings document significant joint instability. This item cannot be used for reattachment of ligament using a bone anchor. ML125/46330 is the approved number.
46336	ML145	INTER-PHALANGEAL JOINT or METACARPOPHALANGEAL JOINT, synovectomy, capsulectomy or debridement of, not being a service associated with any other procedure related to that joint	This item cannot be claimed in conjunction with any other item or procedure related to the joint. This item cannot be used in conjunction with EA075/30023 .

CMBS item code	AMA item code	Descriptor	Clinical indication
46339	ML155	EXTENSOR tendons or FLEXOR tendons of hand or wrist synovectomy of	This item is <u>not</u> indicated for use with surgery for de Quervain's tenovaginitis ML235/46363 and is rarely indicated in routine carpal tunnel surgery.
46396	ML345	PHALANX or METACARPAL of the hand, osteotomy or osteectomy of	This item is applicable for removing excess bone formation in an <i>intact</i> bone. This is no longer to be applied to removal of loose pieces of bone in trauma or bone shortening for terminalisation or replantation. This is part of the debridement and is included in EA075/30023 if applicable.
46414	ML405	ARTIFICIAL TENDON PROSTHESIS, INSERTION OF in preparation for tendon grafting	Tenolysis (ML545, ML535 : 46450, 46453) or tenotomy (MR20047963) of the tendon to be grafted cannot be billed with this item.
46438	ML485	MALLET FINGER, closed pin fixation of	This item is not to be used in conjunction with MP005/47300
46450/ 46453	ML535/ ML545	EXTENSOR TENDON, TENOLYSIS OF, following tendon injury, repair or graft FLEXOR TENDON, TENOLYSIS OF, following tendon injury, repair or graft	These items are applicable for freeing tendons from scar following previous surgery or trauma. They are not indicated in an acute hand injury. ML545 cannot be claimed in conjunction with release of trigger finger.
46504	ML765	NEUROVASCULAR ISLAND FLAP, for pulp innervation	These items are only to be used for a heterodigital neurovascular island flap used to resurface pulp loss (e.g. Littler flap, first dorsal metacarpal artery or Kite flap).
46513/ 46516	ML795/ ML805	Digital nail of finger or thumb removal of	This item should not be used in association with nailbed repair (ML665/46486 or ML675/46489)
46516	ML805	DIGITAL NAIL OF FINGER OR THUMB, removal of in the operating theatre of a hospital or approved day hospital facility	This item is not to be used in association with primary or secondary nail bed repair (ML665/46486, ML675/46489)
46522	ML825	FLEXOR TENDON SHEATH OF FINGER OR THUMB – open operation and drainage for infection	This item is applicable only for drainage of suppurative flexor tenosynovitis It does not apply to washout of flexor sheath in acute injury.
47306	MP025	Distal PHALANX of FINGER or THUMB treatment of by open reduction	This item is not appropriate to be used in conjunction with ML665/46486 where a distal tuft fracture is manipulated into position.
47920	MR088	BONE GROWTH STIMULATOR, insertion of	This is only indicated where a mechanical bone growth stimulator has been inserted. It is not for the insertion of OP1 or other bone morphogenic proteins in the setting of hand surgery
47921	MR090	ORTHOPAEDIC PIN OR WIRE, insertion of, as an independent procedure	This item cannot be claimed when the k-wire has been used as part of fracture fixation.
47927	MR110	BURIED WIRE, PIN OR SCREW, 1 or more of, which were inserted for internal fixation purposes, removal of, in the operating theatre of a hospital or approved day hospital facility – per bone	This item applies for removal of <i>buried</i> k-wire. Where a k-wire or wires cross more than 2 bones, only 1 item number is claimable.

<i>CMBS item code</i>	<i>AMA item code</i>	<i>Descriptor</i>	<i>Clinical indication</i>
48239/ 47306	MR630/ MR640	BONE GRAFT (with or without internal fixation), not being a service to which another item in this Group applies	These items cannot be claimed in conjunction with fracture fixation numbers or the following item numbers : ML005, ML015, ML355, ML365, ML375, MR560-MR620.
48400	MS005	PHALANX, METATARSAL, ACCESSORY BONE OR SESAMOID BONE, osteotomy or osteectomy of, excluding services to which Item MX660 or MX670 applies	This item is only applicable to sesamoidectomy.
48406	MS025	FIBULA, RADIUS, ULNA, CLAVICLE, SCAPULA (other than acromion), RIB, TARSUS OR CARPUS, osteotomy or osteectomy of	This item <u>is</u> the appropriate number for excision of the pisiform. This item is <u>not</u> appropriate for simple removal of bone prominence, osteophytes or small quantities of excess bone.
49212	MU470	WRIST, arthrotomy of	This item is not to be used in conjunction with excision of primary or recurrent wrist ganglia. (ML725/46500,ML755/46503)
50106	MY035	JOINT, stabilisation of, involving 1 or more of: repair of capsule, repair of ligament or internal fixation, not being a service to which another item in this Group applies	This item is applicable for stabilization of CMC joints only.

**Additional assistance:**

1. Where questions arise in individual clinical situations supply of additional information will be considered to assist in determinations.
2. In an open fracture wound that requires debridement, a 50% loading for open fracture fixation can be applied. Debridement item 30023/EA075 is not to be used when applying this loading
3. After hours loading for cases only applies when a surgeon is called back to perform a procedure(s) in isolation rather than for cases scheduled after 6.00 pm on a weekday or a routine weekend operating list.

**Requirements for claims for payment**

All claims for payment will need to be accompanied by the following

1. Detailed operation record including a description of the initial injury, structures that were repaired including the anatomic location and technique of repair.
2. Usage of any of the restricted item numbers (Table 2) should be accompanied by clinical justification in order to process the claim.
3. For any proposed surgery – a list of proposed applicable item numbers will need to be provided prior to approval being given.
4. WorkCover reserves the right to insist on independent clinical assessment prior to the payment of invoices and approvals for surgical procedures.

SCHEDULE C – Billing Items Used in Shoulder and Elbow Surgery

The Order adopts the *WorkCover Qld Shoulder and Elbow Surgery Guidelines* with minor modifications. These are outlined below and their use is mandatory when billing for shoulder and elbow surgery.

<i>AMA/CMBS item code</i>	<i>Descriptor</i>	<i>Clinical indication</i>
<b>BONE GRAFTS</b>		
MR550/48215	Humerus, bone graft to, with internal fixation	
MR640/48242	Bone graft, with internal fixation	Not being a service to which another item in this group applies

<i>AMA/CMBS item code</i>	<i>Descriptor</i>	<i>Clinical indication</i>
MS005/48400	Phalanx, metatarsal, accessory bone or sesamoid bone, osteotomy or osteectomy of, excluding services to which item MX660 or MX670 applies, any of items MX660, MX670, MR130 or MR140 apply	
MS025/48406	Fibula, radius, ulna, clavicle, scapula (other than acromion), rib, tarsus or carpus, osteotomy or osteectomy of	Excluding services to which items MR130/47933 or MR140/47936 apply Not to be used in combination with MT770/48951 <b>Flag if this item is used in combination with any other shoulder item codes (MT600/48900 to MT800/48960)</b>
MS035/48409	Fibula, radius, ulna, clavicle, scapula (other than acromion), rib, tarsus or carpus, osteotomy or osteectomy of, with internal fixation,	Excluding services to which items MR130/47933 or MR140/47936 apply Not to be used in combination with MT770/48951 <b>Flag if this item is used in combination with any other shoulder items (MT600/48900 to MT800/48960)</b>
MS045/48412	HUMERUS, osteotomy or osteectomy of, excluding services to which items MR130 or MR140 apply	<b>Flag if this item is used for tennis elbow surgery</b>
<b>SHOULDERS</b>		
MT600/48900	Excision or coraco-acromial ligament or removal of calcium deposit from cuff or both	Open operation not arthroscopic Use of this item rarely seen in WorkCover NSW claims <b>Flag if this item is used twice or more</b>
MT610/48903	Decompression of subacromial space by acromioplasty	Open operation, also known as open acromioplasty or subacromial decompression (SAD)
MT620/48906	Repair of rotator cuff, including excision of coraco-acromial ligament	Known as open cuff repair without acromioplasty Not to be used in combination with MT600/48900. If MS025 is performed it cannot be used with MT770
MT630/48909	Repair of rotator cuff, including decompression of subacromial space by acromioplasty	Known as open rotator cuff repair with acromioplasty with excision of AC joint Not being a service to which item MT610/48903 applies <b>Flag if this item is used with MX670/49851</b>
MT640/48912	Shoulder arthrotomy	Use of this item rarely seen in WorkCover NSW claims <b>Flag if this item is used in combination with any other item code for shoulder surgery</b>
MT650/48915	Hemi-arthroplasty	Use of this item rarely seen in WorkCover NSW claims Maybe appropriate for shoulder fractures only
MT660/48918	Total replacement arthroplasty including rotator cuff repair	Use of this item rarely seen in WorkCover NSW claims
MT670/48921	Revision of total replacement arthroplasty	Use of this item rarely seen in WorkCover NSW claims
MT680/48924	Revision of total replacement arthroplasty with bone graft to scapula or humerus	Use of this item rarely seen in WorkCover NSW claims
MT690/48927	Removal of shoulder prosthesis	Use of this item rarely seen in WorkCover NSW claims
MT700/48930	Stabilisation for recurrent anterior/posterior dislocation	Known as open shoulder stabilisation (including repair of labrum) If recurrent, treatment option: highly recommend looking in claimant's history to determine if surgery is to treat the aggravation or pre-existing condition

<i>AMA/CMBS item code</i>	<i>Descriptor</i>	<i>Clinical indication</i>
MT710/48933	Stabilisation for multidirectional dislocation	Mostly used for open procedures
MT720/48936	Synovectomy as an independent procedure	Use of this item rarely seen in WorkCover NSW claims <b>Flag if this item is used in combination with any other item code</b>
MT730/48939	Arthrodesis with synovectomy	Use of this item rarely seen in WorkCover NSW claims <b>Flag if this item is used once or more</b>
MT740/48942	Arthrodesis with synovectomy, removal of prosthesis and bone grafting	Use of this item rarely seen in WorkCover NSW claims <b>Flag if this item is used once or more</b>
MT750/48945	Diagnostic arthroscopy	Not to be used with any <b>arthroscopic</b> procedure of the shoulder region May be used with open surgery i.e. MT630/48909, MT620/48906, MT710/48933
MT760/48948	Arthroscopic surgery, with one or more: removal loose bodies, decompression of calcium deposits, debridement labrum/synovium/rotator cuff, chondroplasty	Not to be used with any other <b>arthroscopic</b> procedure of the shoulder region Preparatory for an open procedure Appropriate with MT620/48906 and MT630/48909, May be used with MT700/48930 and MT710/48933
MT770/48951	Arthroscopic division of the coraco-acromial ligament including acromioplasty	Not to be used with any other <b>arthroscopic</b> procedure of the shoulder region Not to be used in combination with EA365/30111 or MT780/48954
MT780/48954	Arthroscopic total synovectomy including release of contracture (shoulder)	Known as frozen shoulder release; stand alone item code Not to be used with any other <b>arthroscopic</b> procedure of the shoulder region Not to be used in combination with MT770/48951 <b>Flag if this item is used with any other item number for shoulder surgery</b>
MT790/48957	Arthroscopic stabilisation for recurrent instability including labral tear or reattachment	Not to be used with any other <b>arthroscopic</b> procedure of the shoulder region If recurrent treatment option, highly recommend looking in claimant's history to determine if surgery is to treat the aggravation or pre-existing condition <b>Flag if this item number used with any other item number for shoulder surgery</b>
MT800/48960	Reconstruction or repair of, including rotator cuff by arthroscopic, arthroscopic assisted or mini open means; arthroscopic acromioplasty; or resection of acromioclavicular joint by separate approach	Not to be used with any procedure of the shoulder region Not to be used in combination with any other item number for shoulder surgery May be used with 18256 Not to be used with <b>EA365/30111</b> <b>Flag if this item number is used in combination with MT770/48951 or MT790/48957</b>
<b>ELBOW</b>		
MU035/49100	Arthrotomy with removal one or more lavage, removal of loose body or division of contracture	Not to be used for tennis elbow surgery

<i>AMA/CMBS item code</i>	<i>Descriptor</i>	<i>Clinical indication</i>
MU045/49103	Ligamentous stabilisation	Not to be used in conjunction with LN810/39330 Acceptable to use LN810/39330 if the ulnar nerve requires mobilisation or decompression at the time of stabilisation (operation notes should reflect this). Transposition LN770/39321 is commonly used. Ulnar nerve transposition can occur frequently in large elbow operations. It may be necessary to perform neurolysis of more than one nerve such as radial and ulnar, if there was significant previous injury or previous surgery
MU055/49106	Arthrodesis with synovectomy	Use of this item rarely seen in WorkCover NSW claims <b>Flag if this item code is used</b>
MU065/49109	Total synovectomy	Known as <b>common contracture release</b> Use of this item rarely seen in WorkCover NSW claims May be appropriate with oestectomy ie. MS045/48412 or MS025/48406 <b>Flag if used</b>
MU075/49112	Silastic replacement of radial head	Seen with fractures and dislocations May be associated with other item numbers i.e. MU045/49103 or MU075/49112 Not to be used in combination with MU065/49109 <b>Flag if used</b>
MU085/49115	Total joint replacement	Use of this item rarely seen in WorkCover NSW claims <b>Flag if used</b>
MU086/49116	Total replacement arthroplasty, revision including removal of prosthesis	Use of this item rarely seen in WorkCover NSW claims <b>Flag if used</b>
MU087/49117	Total replacement arthroplasty, revision procedure with bone grafting or removal or prosthesis	Use of this item rarely seen in WorkCover NSW claims <b>Flag if used</b>
MU095/49118	Diagnostic arthroscopy	Not to be used with any other <b>arthroscopic</b> procedure of the elbow region Appropriate for use with open elbow surgery
MU105/49121	Arthroscopic surgery of elbow	Involving any one or more of: drilling of defect, removal of loose body, release of contracture or adhesions, chondroplasty, or osteoplasty (not a service associated with any other <b>arthroscopic</b> procedure of the elbow joint)
<b>OTHER</b>		
EA365/30111	Bursa (large) including olecranon, calcaneum or patella, excision of	May be used in combination with olecranon bursa <b>Flag if used in combination with any shoulder surgery</b> Not to be used in combination with MT800/48960
LN810/39330	Neurolysis by open operation without transposition	Not being a service associated with a service to which item LN740/39312 applies Can be used in combination with elbow surgery Not to be used in combination with MT760/48948 <b>Flag if used in combination with any item codes for shoulder surgery</b>

<i>AMA/CMBS item code</i>	<i>Descriptor</i>	<i>Clinical indication</i>
<b>LIMB LENGTHENING AND DEFORMITY CORRECTION</b>		
MZ330/50405	Elbow, flexorplasty, or tendon transfer to restore elbow function	May be seen in distal biceps reconstruction Use of this item rarely seen in WorkCover NSW claims – set of item numbers address congenital conditions <b>Flag if used</b>
<b>OTHER JOINTS</b>		
MY035/50106	Joint, stabilisation of, involving one or more of: repair of capsule, repair of ligament or internal fixation	Not being a service to which another item in this Group applies Appropriate to be used with MT610/48903 and MR210/47966
MY055/50112	Cicatricial flexion or extension contraction of joint, correction of, involving tissues deeper than skin and subcutaneous tissue, not being a service to which another item in this group applies	Not to be used with any other <b>arthroscopic</b> procedure of the shoulder region Not to be used in combination with item code MT780/48954 <b>Flag if used in combination with any item code for elbow and shoulder surgery</b> Implies a release for stiffness after injury or surgery. May occur with other numbers in relation to a large release of the stiff elbow. Three to five item numbers should be in association with an operation that took two to three hours and is usually a revision situation or after serious trauma. The complexity should be reflected in the history of injury, number of prior operations, duration of surgery, complexity of the operation note.
MY065/50115	Joint or joints, manipulation of, performed in the operating theatre of a hospital	Not to be used for an ‘examination’ of a joint under general anaesthetic prior to an operation, where the general anaesthetic is for the operation itself Not being a service associated with a service to which another item in this group applies <b>Flag if this item code is used two or more times</b>
MY105/50127	Joint or joints, arthroplasty of, by any technique	Not being a service to which another item applies Not to be used in combination with any item code for shoulder, elbow or sternoclavicular surgery
<b>GENERAL</b>		
MP455/47429	Humerus, proximal, treatment of fracture of, by open reduction	
MP465/47432	Humerus, proximal, treatment of intra-articular fracture of, by open reduction	
MP485/47438	Humerus, proximal, treatment of fracture of, and associated dislocation of shoulder, by open reduction	
MP495/47441	Humerus, proximal, treatment of intra-articular fracture of, and associated dislocation of shoulder, by open reduction	
MR020/47903	Epicondylitis, open operation for	Tennis elbow Not to be used in combination with MS045/48412 <b>Flag if used</b>

<i>AMA/CMBS item code</i>	<i>Descriptor</i>	<i>Clinical indication</i>
MR110/47927	Buried wire, pin or screw, one or more of, which were inserted for internal fixation purposes, removal of, in the operating theatre of a hospital	Per bone
MR120/47930	Plate, rod or nail and associated wires, pins or screws, one or more of, all of which were inserted for internal fixation purposes, removal of	Not being a service associated with a service to which item MR100/47924 or MR110/47927 applies – per bone
MR170/47954	Tendon, repair of, as an independent procedure	Can be used in treating biceps tenodesis <b>Flag if used with any other item code</b>
MR190/47960	Tenotomy, subcutaneous	Not being a service to which another item in this group applies
MR200/47963	Tenotomy, open, with or without tenoplasty	Not being a service to which another item in this group applies Could be used in combination with MT770/48951 or MT800/48960
MR210/47966	Tendon or ligament, transfer,	As an independent procedure Could be used in combination with MT770/48951 or MT800/48960
MR220/47969	Tenosynovectomy	Not being a service to which another item in this group applies Should not be used for tennis elbow or shoulder surgery <b>Flag if used for shoulder or elbow procedures</b>



# PRIVATE ADVERTISEMENTS

## COUNCIL NOTICES

### CAMPBELLTOWN CITY COUNCIL

Roads Act 1993, Section 16

Dedication of Land as Public Road

NOTICE is hereby given pursuant to section 16 of the Roads Act 1993, that the land described in the Schedule below is dedicated to the public as road. PAUL TOSI, General Manager, Campbelltown City Council, PO Box 57, Campbelltown NSW 2560.

#### SCHEDULE

All those pieces or parcels of Cadogan Road provided for in DP 960 forming part of land remaining comprised in Certificate of Title Volume 618, Folio 6, at Macquarie Fields, in the State of New South Wales (as shown on the diagram below).

Note: On dedication, title for the land will remain vested in Campbelltown City Council as operational land.



[6353]

### CAMPBELLTOWN CITY COUNCIL

Roads Act 1993, Section 16

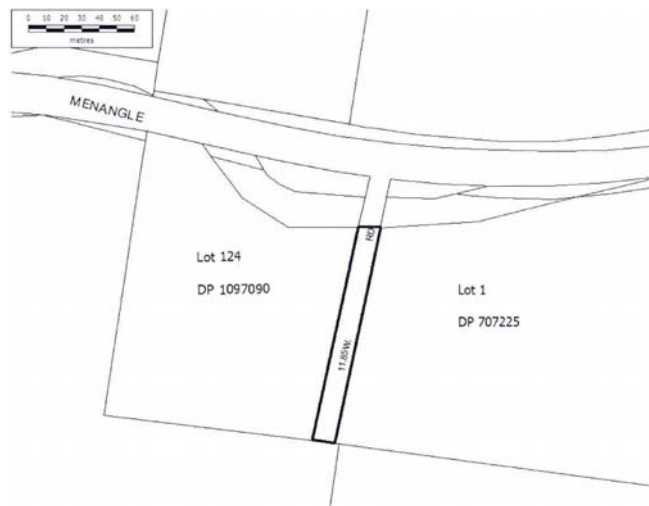
Dedication of Land as Public Road

NOTICE is hereby given pursuant to section 16 of the Roads Act 1993, that the land described in the Schedule below is dedicated to the public as road. PAUL TOSI, General Manager, Campbelltown City Council, PO Box 57, Campbelltown NSW 2560.

#### SCHEDULE

All those pieces or parcel of land at Menangle Park situated between Lot 124, DP 1097090 and Lot 1, DP 707225 being part of the land remaining comprised in Conveyance Book 151, No. 872, in the State of New South Wales (as shown on the diagram below).

Note: On dedication, title for the land will remain vested in Campbelltown City Council as operational land.



[6354]

### EUROBODALLA SHIRE COUNCIL

Roads Act 1993

Naming of Road

NOTICE is hereby given that Eurobodalla Shire Council, in pursuance of section 162 of the Roads Act 1993, has renamed a section of the Princes Highway, Central Tilba which will be bypassed when the current RMS road works at Victoria Creek Upgrade realignment in the area is completed.

*Location*

The section of Princes Highway to be renamed will be located some 330 metres north of the Corkhill Drive intersection in a northerly direction for approx. 19km.

*Name*

Victoria Creek Road.

GENERAL MANAGER, Eurobodalla Shire Council, PO Box 99, Moruya NSW 2537. Reference No. E05.9211.

[6355]

### HURSTVILLE CITY COUNCIL

Notification of Vesting of Public Garden and Recreation Space

HURSTVILLE CITY COUNCIL requires the land to vest in Hurstville City Council as public garden and recreation space in accordance with section 50 (4) of the Local Government Act 1993. Dated: 1 March 2012. VICTOR GORDON DOUGLAS LAMPE, General Manager, Hurstville City Council, PO Box 205, Hurstville BC NSW 1481.

#### Descriptions

Part Volume 7416, Folio 94 (as regards the road in Deposited Plan 13496) and part Volume 5661, Folio 42, being Lot N in Deposited Plan 30731, Kindilan Street, Kingsgrove, Parish of St George, County of Cumberland.

Note: On vesting, title for the land will remain vested in Hurstville City Council.

[6356]

**LIVERPOOL CITY COUNCIL**

Roads Act 1993, Section 10

## Notice of Dedication of Land as Public Road

NOTICE is hereby given that the Council of the City of Liverpool dedicates the land described in the Schedule below as public road under section 10 of the Roads Act 1993. FAROOQ PORTELLI, General Manager, The Council of the City of Liverpool, Locked Bag 7064, Liverpool BC NSW 1871.

**SCHEDULE**

All that piece or parcel of land known as Lot 2032 in Deposited Plan 775859 in the City of Liverpool, Parish of St Luke, County of Cumberland and as described in Folio Identifier 2032/775859. [6357]

**LIVERPOOL CITY COUNCIL**

Erratum

PURSUANT to Clause 9 of the Roads Regulation 2008, the following notice replaces the one advertised on page 412 of the *New South Wales Government Gazette* No. 18, dated 10 February 2012.

Road name changes in Prestons in DP 1155997.

Montague Street is now known as Corrimal Street.

Norfolk Boulevard is now known as Woonona Road.

FAROOQ PORTELLI, General Manager, Liverpool City Council, Locked Bag 7054, Liverpool BC NSW 1871.

[6358]

**SHOALHAVEN CITY COUNCIL**

Roads Act 1993

Erratum

IN the notice in *New South Wales Government Gazette* No. 20 of 25 February 2011, Folio 1565, under the heading "SHOALHAVEN CITY COUNCIL", "Naming of Roads" the road name was shown as Elian Court and should have read Elian Crescent. This notice corrects this error. R. PIGG, General Manager, Shoalhaven City Council, Bridge Road, Nowra NSW 2541. File SF10192. [6359]

**WAGGA WAGGA CITY COUNCIL**

Roads Act 1993

Land Acquisition (Just Terms Compensation) Act 1991

Notice of Dedication to Public Road of Land at Wagga Wagga, Wagga Wagga City Council Area

WAGGA WAGGA CITY COUNCIL declares that the land described in the Schedule below is dedicated as public road under section 10 of the Roads Act 1993. GENERAL MANAGER, Wagga Wagga City Council, PO Box 20, Wagga Wagga NSW 2650.

**SCHEDULE**

Lot 1, DP 1163426.

[6360]

**COMPANY NOTICES**

NOTICE of voluntary liquidation. – ASQUITH & DE WITT PTY LTD (In Liquidation), ACN 001 431 072. – Notice is hereby given pursuant to section 491 (2) of the Corporations Act 2001, that at a meeting of Shareholders of Asquith & De Witt Pty Ltd, duly convened and held on 5 March 2012, it was resolved that the company be wound up voluntarily as a Members Voluntary Liquidation and that the assets of the company may be distributed in whole or in part to the members in specie should the liquidator so desire and by ordinary resolution that Brent Antony Perkins be appointed Liquidator. Dated 5 March 2012. BRENT ANTONY PERKINS, Liquidator, Box 29, Hunter Region Mail Centre NSW 2310, tel.: (02) 4923 4000. [6361]

---

 Authorised to be printed

ISSN 0155-6320

TONY DUCKMANTON, Government Printer.