

Government Gazette

of the State of

New South Wales

Number 86

Friday, 2 October 2015

The *New South Wales Government Gazette* is the permanent public record of official notices issued by the New South Wales Government. It also contains local council and other notices and private advertisements.

The Gazette is compiled by the Parliamentary Counsel's Office and published on the NSW legislation website (www.legislation.nsw.gov.au) under the authority of the NSW Government. The website contains a permanent archive of past Gazettes.

To submit a notice for gazettal – see [Gazette Information](#).

PARLIAMENT

ACTS OF PARLIAMENT ASSENTED TO

Legislative Assembly Office, Sydney 28 September 2015

It is hereby notified, for general information, that His Excellency the Governor, has, in the name and on behalf of Her Majesty, this day assented to the under mentioned Acts passed by the Legislative Assembly and Legislative Council of New South Wales in Parliament assembled, viz.:

Act No 25 — An Act with respect to providing incentives for economic development and job creation; to establish Jobs for NSW and the Jobs for NSW Fund; and for other purposes. [**Jobs for NSW Bill**]

Act No 26 — An Act to constitute Dams Safety NSW and to confer functions on it relating to the safety of dams; and for related purposes. [**Dams Safety Bill**]

Act No 27 — An Act to amend the *Impounding Act 1993* to make further provision for the impounding of boat trailers left unattended for extended periods. [**Impounding Amendment (Unattended Boat Trailers) Bill**]

Act No 28 — An Act to amend the *Independent Commission Against Corruption Act 1988* in relation to the jurisdiction and powers of the Independent Commission Against Corruption. [**Independent Commission Against Corruption Amendment Bill**]

Act No 29 — An Act to amend the *Adoption Act 2000*, the *Child Protection (Working with Children) Act 2012*, the *Children and Young Persons (Care and Protection) Act 1998* and other Acts with respect to the suitability of persons to be carers, adoptive parents and guardians of children and young people; and for other purposes. [**Child Protection Legislation Amendment Bill**]

RONDA MILLER
Clerk of the Legislative Assembly

GOVERNMENT NOTICES

Miscellaneous Instruments

NATIONAL PARKS AND WILDLIFE ACT 1974

NOTICE OF RESERVATION OF A NATIONAL PARK

I, General The Honourable David Hurley AC DSC (Ret'd), Governor of the State of New South Wales, with the advice of the Executive Council, reserve the lands described in the Schedule 1 below as part of **Brisbane Water National Park**, under the provisions of section 30A (1) of the *National Parks and Wildlife Act 1974*.

Signed and Sealed at Sydney this 23rd day of September 2015.

DAVID HURLEY
Governor

By His Excellency's Command,

MARK SPEAKMAN SC, MP
Minister for the Environment

GOD SAVE THE QUEEN

Land District – Gosford LGA – Gosford

Schedule 1

County Northumberland, Parish Patonga, about 2.4 hectares being the council road shown red in the diagram below
Papers OEH/EF14/7122





New South Wales

Notice of Determination for Provisional Listing on an Emergency Basis

under the

Threatened Species Conservation Act 1995

The Scientific Committee established under the *Threatened Species Conservation Act 1995* has made a determination for provisional listing, on an emergency basis, of the following species as a critically endangered species under that Act, and, accordingly, Schedule 1A to that Act is taken to have been amended by inserting in Part 1 in alphabetical order in the matter relating to Proteaceae under the heading “Plants”:

Banksia vincentia M.L. Stimpson & P.H. Weston

This Notice commences on the day on which it is published in the Gazette.

Dated, this 15th day of September 2015.

Dr Mark Eldridge
Chairperson of the Scientific Committee

Copies of determination and reasons

Copies of the determination and the reasons for it are available to members of the public (free of charge) as follows:

- (a) on the Internet at www.environment.nsw.gov.au,
- (b) by contacting the Scientific Committee Unit, by post C/- Office of Environment and Heritage, PO Box 1967, Hurstville BC NSW 1481, by telephone (02) 9585 6940 or by facsimile (02) 9585 6606,
- (c) in person at the Office of Environment and Heritage Information Centre, Level 14, 59–61 Goulburn St, Sydney.



New South Wales

Notice of Final Determination

under the

Threatened Species Conservation Act 1995

The Scientific Committee established under the *Threatened Species Conservation Act 1995* has made a final determination to insert the following species as an endangered species under that Act and, accordingly, Schedule 1 to that Act is amended by inserting the following in Part 1 in alphabetical order in the matter relating to Fabaceae under the heading "Plants":

Acacia meiantha Tindale & Herscovitch

This Notice commences on the day on which it is published in the Gazette.

Dated, this 15th day of September 2015.

Dr Mark Eldridge
Chairperson of the Scientific Committee

Copies of final determination and reasons

Copies of the final determination and the reasons for it are available to members of the public (free of charge) as follows:

- (a) on the Internet at www.environment.nsw.gov.au,
- (b) by contacting the Scientific Committee Unit, by post C/- Office of Environment and Heritage, PO Box 1967, Hurstville BC NSW 1481, by telephone (02) 9585 6940 or by facsimile (02) 9585 6606,
- (c) in person at the Office of Environment and Heritage Information Centre, Level 14, 59–61 Goulburn St, Sydney.



New South Wales

Notice of Final Determination

under the

Threatened Species Conservation Act 1995

The Scientific Committee established under the *Threatened Species Conservation Act 1995* has made a final determination to insert the following species as an endangered species under that Act and, accordingly, Schedule 1 to that Act is amended by inserting the following in Part 1 in alphabetical order in the matter relating to Orchidaceae under the heading “Plants”:

Diuris eborensis D.L. Jones

This Notice commences on the day on which it is published in the Gazette.

Dated, this 15th day of September 2015.

Dr Mark Eldridge
Chairperson of the Scientific Committee

Copies of final determination and reasons

Copies of the final determination and the reasons for it are available to members of the public (free of charge) as follows:

- (a) on the Internet at www.environment.nsw.gov.au,
- (b) by contacting the Scientific Committee Unit, by post C/- Office of Environment and Heritage, PO Box 1967, Hurstville BC NSW 1481, by telephone (02) 9585 6940 or by facsimile (02) 9585 6606,
- (c) in person at the Office of Environment and Heritage Information Centre, Level 14, 59–61 Goulburn St, Sydney.



Notice of Final Determination

under the

Threatened Species Conservation Act 1995

The Scientific Committee established under the *Threatened Species Conservation Act 1995* has made a final determination to insert the following species as a critically endangered species under that Act and, accordingly, Schedule 1A to that Act is amended by inserting the following in Part 1 in alphabetical order in the matter relating to Fabaceae under the heading “Plants”:

- * *Glycine latrobeana* (Meisn.) Benth.

This Notice commences on the day on which it is published in the Gazette.

Dated, this 15th day of September 2015.

Dr Mark Eldridge
Chairperson of the Scientific Committee

Copies of final determination and reasons

Copies of the final determination and the reasons for it are available to members of the public (free of charge) as follows:

- (a) on the Internet at www.environment.nsw.gov.au,
- (b) by contacting the Scientific Committee Unit, by post C/- Office of Environment and Heritage, PO Box 1967, Hurstville BC NSW 1481, by telephone (02) 9585 6940 or by facsimile (02) 9585 6606,
- (c) in person at the Office of Environment and Heritage Information Centre, Level 14, 59–61 Goulburn St, Sydney.



New South Wales

Notice of Final Determination

under the

Threatened Species Conservation Act 1995

The Scientific Committee established under the *Threatened Species Conservation Act 1995* has made a final determination to insert the following species as a critically endangered species under that Act and, accordingly, Schedule 1A to that Act is amended by inserting the following in Part 1 in alphabetical order in the matter relating to Dilleniaceae under the heading “Plants”:

Hibbertia sp. Turramurra (A.F. Robinson s.n. NSW 981514)

This Notice commences on the day on which it is published in the Gazette.

Dated, this 15th day of September 2015.

Dr Mark Eldridge
Chairperson of the Scientific Committee

Copies of final determination and reasons

Copies of the final determination and the reasons for it are available to members of the public (free of charge) as follows:

- (a) on the Internet at www.environment.nsw.gov.au,
- (b) by contacting the Scientific Committee Unit, by post C/- Office of Environment and Heritage, PO Box 1967, Hurstville BC NSW 1481, by telephone (02) 9585 6940 or by facsimile (02) 9585 6606,
- (c) in person at the Office of Environment and Heritage Information Centre, Level 14, 59–61 Goulburn St, Sydney.



Notice of Final Determination

under the

Threatened Species Conservation Act 1995

The Scientific Committee established under the *Threatened Species Conservation Act 1995* has made a final determination to insert the species referred to in paragraph (a) as critically endangered species under that Act, and, as a consequence, to omit reference to that species as an endangered species and, accordingly:

- (a) Schedule 1A to that Act is amended by inserting the following in Part 1 in alphabetical order under the heading “Mammals”:

Potoroidae

* *Potorous longipes* Seebeck and Johnston, 1980 Long-footed Potoroo

- (b) Schedule 1 to that Act is amended by omitting the following from Part 1 under the heading “Mammals”:

Potoroidae

* *Potorous longipes* Seebeck & Johnston, 1980 Long-footed Potoroo

This Notice commences on the day on which it is published in the Gazette.

Dated, this 15th day of September 2015.

Dr Mark Eldridge
Chairperson of the Scientific Committee

Copies of final determination and reasons

Copies of the final determination and the reasons for it are available to members of the public (free of charge) as follows:

- (a) on the Internet at www.environment.nsw.gov.au,
(b) by contacting the Scientific Committee Unit, by post C/- Office of Environment and Heritage, PO Box 1967, Hurstville BC NSW 1481, by telephone (02) 9585 6940 or by facsimile (02) 9585 6606,
(c) in person at the Office of Environment and Heritage Information Centre, Level 14, 59–61 Goulburn St, Sydney.



New South Wales

Notice of Final Determination

under the

Threatened Species Conservation Act 1995

The Scientific Committee established under the *Threatened Species Conservation Act 1995* has made a final determination to insert the following species as an endangered species under that Act and, accordingly, Schedule 1 to that Act is amended by inserting the following in Part 1 in alphabetical order in the matter relating to Rhamnaceae under the heading “Plants”:

Pomaderris cocoparrana N.G. Walsh

This Notice commences on the day on which it is published in the Gazette.

Dated, this 15th day of September 2015.

Dr Mark Eldridge
Chairperson of the Scientific Committee

Copies of final determination and reasons

Copies of the final determination and the reasons for it are available to members of the public (free of charge) as follows:

- (a) on the Internet at www.environment.nsw.gov.au,
- (b) by contacting the Scientific Committee Unit, by post C/- Office of Environment and Heritage, PO Box 1967, Hurstville BC NSW 1481, by telephone (02) 9585 6940 or by facsimile (02) 9585 6606,
- (c) in person at the Office of Environment and Heritage Information Centre, Level 14, 59–61 Goulburn St, Sydney.



New South Wales

Notice of Final Determination

under the

Threatened Species Conservation Act 1995

The Scientific Committee established under the *Threatened Species Conservation Act 1995* has made a final determination to insert the following species as an endangered species under that Act and, accordingly, Schedule 1 to that Act is amended by inserting the following in Part 1 in alphabetical order in the matter relating to Solanaceae under the heading “Plants”:

Solanum sulphureum A.R. Bean

This Notice commences on the day on which it is published in the Gazette.

Dated, this 15th day of September 2015.

Dr Mark Eldridge
Chairperson of the Scientific Committee

Copies of final determination and reasons

Copies of the final determination and the reasons for it are available to members of the public (free of charge) as follows:

- (a) on the Internet at www.environment.nsw.gov.au,
- (b) by contacting the Scientific Committee Unit, by post C/- Office of Environment and Heritage, PO Box 1967, Hurstville BC NSW 1481, by telephone (02) 9585 6940 or by facsimile (02) 9585 6606,
- (c) in person at the Office of Environment and Heritage Information Centre, Level 14, 59–61 Goulburn St, Sydney.



New South Wales

Notice of Final Determination

under the

Threatened Species Conservation Act 1995

The Scientific Committee established under the *Threatened Species Conservation Act 1995* has made a final determination to insert the following species as a vulnerable species under that Act and, accordingly, Schedule 2 to that Act is amended by inserting the following in Part 1 in alphabetical order in the matter relating to Orchidaceae under the heading “Plants”:

Thelymitra alpicola Jeanes

This Notice commences on the day on which it is published in the Gazette.

Dated, this 15th day of September 2015.

Dr Mark Eldridge
Chairperson of the Scientific Committee

Copies of final determination and reasons

Copies of the final determination and the reasons for it are available to members of the public (free of charge) as follows:

- (a) on the Internet at www.environment.nsw.gov.au,
- (b) by contacting the Scientific Committee Unit, by post C/- Office of Environment and Heritage, PO Box 1967, Hurstville BC NSW 1481, by telephone (02) 9585 6940 or by facsimile (02) 9585 6606,
- (c) in person at the Office of Environment and Heritage Information Centre, Level 14, 59–61 Goulburn St, Sydney.



New South Wales

Notice of Final Determination

under the

Threatened Species Conservation Act 1995

The Scientific Committee established under the *Threatened Species Conservation Act 1995* has made a final determination to insert the following ecological community as a critically endangered ecological community under that Act and, accordingly, Schedule 1A to that Act is amended by inserting the following in Part 2 in alphabetical order:

Windswept Feldmark in the Australian Alps Bioregion (as described in the final determination of the Scientific Committee to list the ecological community)

This Notice commences on the day on which it is published in the Gazette.

Dated, this 15th day of September 2015.

Dr Mark Eldridge
Chairperson of the Scientific Committee

Copies of final determination and reasons

Copies of the final determination and the reasons for it are available to members of the public (free of charge) as follows:

- (a) on the Internet at www.environment.nsw.gov.au,
- (b) by contacting the Scientific Committee Unit, by post C/- Office of Environment and Heritage, PO Box 1967, Hurstville BC NSW 1481, by telephone (02) 9585 6940 or by facsimile (02) 9585 6606,
- (c) in person at the Office of Environment and Heritage Information Centre, Level 14, 59–61 Goulburn St, Sydney.

THREATENED SPECIES CONSERVATION ACT 1995

FINAL DETERMINATION

The Scientific Committee, established by the *Threatened Species Conservation Act 1995* (the Act), has made a Final Determination under section 23 of the Act to list Windswept Feldmark in the Australian Alps Bioregion as a CRITICALLY ENDANGERED ECOLOGICAL COMMUNITY in Part 2 of Schedule 1A of the Act.

This determination contains the following information:

- Parts 1 & 2:** Section 4 of the Act defines an ecological community as “an assemblage of species occupying a particular area”. These features of Windswept Feldmark in the Australian Alps Bioregion are described in Parts 1 and 2 of this Determination, respectively.
- Part 3:** Part 3 of this Determination describes the eligibility for listing of this ecological community in Part 2 of Schedule 1A of the Act according to criteria as prescribed by the *Threatened Species Conservation Regulation 2010*.
- Part 4:** Part 4 of this Determination provides additional information intended to aid recognition of this community in the field.

Part 1. Assemblage of species

- 1.1 Windswept Feldmark in the Australian Alps Bioregion (hereafter referred to as Windswept Feldmark) is characterised by the assemblage of species listed below.

<i>Agrostis muelleriana</i>	<i>Leptorhynchos squamatus</i>
<i>Brachyscome spathulata</i> subsp. <i>spathulata</i>	<i>Luzula australasica</i> subsp. <i>dura</i>
<i>Colobanthus pulvinatus</i>	<i>Lycopodium fastigiatum</i>
<i>Colobanthus affinis</i>	<i>Pentachondra pumila</i>
<i>Craspedia jamesii</i>	<i>Poa fawsettae</i>
<i>Epacris gunnii</i>	<i>Polytrichum juniperum</i>
<i>Epacris petrophila</i>	<i>Ranunculus acrophilus</i>
<i>Epilobium tasmanicum</i>	<i>Rhytidosperma pumilum</i>
<i>Euphrasia collina</i> subsp. <i>lapidosa</i>	<i>Scleranthus singuliflorus</i>
<i>Ewartia nubigena</i>	<i>Senecio pectinatus</i> var. <i>major</i>
<i>Hypogymnia lugubris</i>	<i>Trisetum spicatum</i> subsp. <i>australiense</i>
<i>Kelleria dieffenbachii</i>	<i>Veronica densifolia</i>

- 1.2 The total species list of the community across all occurrences is likely to be larger than that given above. Due to variation across the range of the community, not all of the above species are present at every site and many sites may also contain species not listed above.

Characteristic species may be abundant or rare and comprise only a subset of the complete list of species recorded in known examples of the community. Some characteristic species show a high fidelity (are relatively restricted) to the community, but may also occur in other communities, while others are more typically found in a range of communities.

The number and identity of species recorded at a site is a function of sampling scale and effort. In general, the number of species recorded is likely to increase with the size of the site and there is a greater possibility of recording species that are rare in the landscape.

Species presence and relative abundance (dominance) will vary from site to site as a function of environmental factors such as soil properties (chemical composition, texture, depth, drainage), topography, climate, and through time as a function of disturbance (eg fire) and weather (eg snow cover, extreme cold).

At any one time, above ground individuals of some species may be absent, but the species may be represented below ground in the soil seed bank or as dormant structures such as bulbs, corms, rhizomes, rootstocks or lignotubers.

The species listed above are vascular and cryptogamic plants, however the community also includes micro-organisms, fungi, vertebrate and invertebrate fauna. These components of the community are less well documented.

Part 2. Particular area occupied by the ecological community

- 2.1 The assemblage of species listed in Part 1.1 above which characterises Windswept Feldmark occurs within the Australian Alps Bioregion. This Bioregion is defined by SEWPaC (2012) Interim Biogeographic Regionalisation for Australia, Version 7. Department of Sustainability, Environment, Water, Population and Communities. <http://www.environment.gov.au/parks/nrs/science/bioregion-framework/ibra/maps.html>.
- 2.2 It is the intent of the Scientific Committee that all occurrences of the ecological community (both recorded and as yet unrecorded, and independent of their condition) that occur within this Bioregion be covered by this Determination.
- 2.3 Windswept Feldmark occurs on high alpine ridgelines along the Main Range of Kosciuszko National Park.

Part 3. Eligibility for listing

3.1 Reasons for determining eligibility for listing

- 3.1.1 The extent of occurrence and area of occupancy (AOO) of Windswept Feldmark are estimated to be 24 km². The AOO is based on six 2 x 2 km grid cells, the scale recommended for assessing occupancy by IUCN (2014). The geographic distribution of Windswept Feldmark is therefore considered to be very highly restricted.
- 3.1.2 Windswept Feldmark has been altered by walking track use and trampling by humans, resulting in soil erosion and changes in community composition. The Main Range walking track divides much of the Windswept Feldmark community. Between 5–11% of the community between Carruthers Peak and Mount Northcote has been lost or damaged by trail-based fragmentation (Ballantyne *et al.* 2014). Trampling by humans also results in damage to Windswept Feldmark, with the exposed soil colonised by dominant species of the adjoining Tall Alpine Herbfield vegetation community such as *Celmisia costiniana* and *Aciphylla glacialis* (M. Ballantyne *in litt.* November 2013). Repeated trampling of feldmark vegetation in Kosciuszko National Park has been shown to reduce vegetation cover and species richness as well as regeneration of vegetation (McDougall and Wright 2004). The dominant species *Epacris gunnii* is highly vulnerable to trampling impacts (McDougall and Wright 2004; M. Ballantyne *in litt.* November 2013), with regeneration of the species impeded across the Main Range walking track (Ballantyne *et al.* 2014). Humans using the Main Range walking track are also likely to facilitate the input of exotic plant species' propagules to the community. The exotic herb *Acetosella vulgaris* is common in Windswept Feldmark although as yet poses little threat (Costin *et al.* 2000; M. Ballantyne *in litt.* November 2013).
- 3.1.3 Windswept Feldmark is restricted to the highest ridges in the Australian Alps and thus is likely to be highly vulnerable to warming and drying due to climate change (Ballantyne *et al.* 2014). However Pickering and Armstrong (2014) state that it is not clear if Windswept Feldmark will increase, stabilise or decline in the long term with climate change (> 30 years). It is possible that Windswept Feldmark may increase in area as snow cover in winter decreases, resulting in increased exposure to freezing conditions that plant species of adjacent communities are less tolerant of (Pickering and Armstrong 2014). Alternatively, warmer temperatures may result in grass and herb species of Tall Alpine Herbfield replacing species of Windswept Feldmark (Pickering and Armstrong 2014). Windswept Feldmark is also likely to be vulnerable to an increase in fire frequency associated with climate change, resulting in reduced regeneration of the community's component species (S. Garrett *in litt.* February 2014). Regeneration of the dominant shrub *Epacris gunnii* after a bushfire in 2003 has been very slow and the burned patches of Windswept Feldmark now more closely resemble Tall Alpine Herbfield vegetation (Pickering and Venn 2013).

3.2 Criteria for listing

Windswept Feldmark in the Australian Alps Bioregion is eligible to be listed as a Critically Endangered Ecological Community in accordance with section 12 of the Act as, in the opinion of the Scientific Committee, it is facing an extremely high risk of extinction in New South Wales in the near future, as determined in accordance with the following criteria as prescribed by the *Threatened Species Conservation Regulation 2010*:

Clause 18 Restricted geographic distribution of the ecological community

The ecological community's geographic distribution is estimated or inferred to be:

- (b) Very highly restricted,

and the nature of its distribution makes it likely that the action of a threatening process could cause it to decline or degrade in extent or ecological function over a time span appropriate to the life cycle and habitat characteristics of the ecological community's component species.

Dr Mark Eldridge
Chairperson
Scientific Committee

Part 4. Additional information about the ecological community

The following information is additional to that required to meet the definition of an ecological community under the Act, but is provided to assist in the recognition of Windswept Feldmark in the field. Given natural variability, along with disturbance history, Windswept Feldmark may sometimes occur outside the typical range of variation in the features described below.

- 4.1 Windswept Feldmark occurs along high alpine ridgelines along the Main Range of Kosciuszko National Park in south-eastern New South Wales (Costin *et al.* 2000). It occurs mainly between Mt Twynam and Rawsons Pass (McDougall and Walsh 2007). The community occurs in small patches (< 2.5 ha) and is interspersed with Tall Alpine Herbfield. The total area of Windswept Feldmark is 28.5 ha (Costin *et al.* 2000).
- 4.2 Windswept Feldmark is described by McDougall and Walsh (2007) as *Epacris gunnii-Chionohebe pulvinatus* feldmark (Community 40) that occurs on high ridges from 2010–2150 m a.s.l. It is described as a short alpine heathland (McDonald and Walsh 2007) or tundra-like plant community (Costin *et al.* 1979). The shallow soils and strong winds result in vegetation cover of Windswept Feldmark being relatively sparse with low plant diversity. The dominant shrub (*Epacris gunnii*) grows in discrete 'halo-like' patches typically less than 1 m² in area and accounts for 25–50% cover of Windswept Feldmark (McDougall and Wright 2004). A small number of sub-shrub, herb and graminoid species, typically < 50 cm in height, are associated with *E. gunnii*. *Epacris gunnii* is thought to be important in facilitating

regeneration and growth of other key component species of the community (Ballantyne and Pickering 2015; Costin *et al.* 2000; McDougall and Wright 2004).

- 4.3 Windswept Feldmark has been recorded in the local government areas of Snowy River and Tumbarumba Shires (within the Australian Alps Bioregion), however unrecorded stands of the ecological community may occur elsewhere in the Bioregion.

References:

Ballantyne M, Pickering CM, McDougall KL, Wright GT (2014) Sustained impacts of a hiking trail on changing Windswept Feldmark vegetation in the Australian Alps. *Australian Journal of Botany* **62**, 263–275.

Ballantyne M, Pickering CM, (2015) Shrub facilitation is an important driver of alpine plant community diversity and functional composition. *Biodiversity and Conservation* 1–17.

Costin A, Gray M, Totterdell C, Wimbush D (1979) 'Kosciuszko alpine flora (1st edn).' (CSIRO Publishing: Melbourne)

Costin AB, Gray M, Totterdell C, Wimbush D (2000) 'Kosciuszko alpine flora (2nd edn).' (CSIRO Publishing: Melbourne)

IUCN Standards and Petitions Subcommittee (2014) Guidelines for Using the IUCN Red List Categories and Criteria. Version 11. Prepared by the Standards and Petitions Subcommittee. <http://www.iucnredlist.org/documents/RedListGuidelines.pdf>.

McDougall KL, Walsh NG (2007) Treeless vegetation of the Australian Alps. *Cunninghamia* **10**, 1–57.

McDougall KL, Wright GT (2004) The impact of trampling on feldmark vegetation in Kosciuszko National Park, New South Wales. *Australian Journal of Botany* **52**, 315–320.

Pickering CM, Armstrong T (2014) Climate change and the plant communities of the Kosciuszko alpine zone in the Australian Alps. (Cooperative Research Centre for Sustainable Tourism: Griffith University)

Pickering CM, Venn SE (2013) Increasing the resilience of the Australian alpine flora to climate change and associated threats: a plant functional traits approach. (National Climate Change Adaptation Research Facility: Gold Coast)



Notice of Final Determination

under the

Threatened Species Conservation Act 1995

The Scientific Committee established under the *Threatened Species Conservation Act 1995* has made a final determination to insert the species referred to in paragraph (a) as a critically endangered species under that Act, and, as a consequence, to omit reference to that species as an endangered species and, accordingly:

- (a) Schedule 1A to that Act is amended by inserting the following in Part 1 in alphabetical order under the heading “Plants”:

Araucariaceae

- * *Wollemia nobilis* W.G. Jones, K.D. Hill & J.M. Allen Wollemi Pine

- (b) Schedule 1 to that Act is amended by omitting the following from Part 1 under the heading “Plants”:

Araucariaceae

- * *Wollemia nobilis* W. Jones, K. Hill & J. Allen

This Notice commences on the day on which it is published in the Gazette.

Dated, this 15th day of September 2015.

Dr Mark Eldridge
Chairperson of the Scientific Committee

Copies of final determination and reasons

Copies of the final determination and the reasons for it are available to members of the public (free of charge) as follows:

- (a) on the Internet at www.environment.nsw.gov.au,
(b) by contacting the Scientific Committee Unit, by post C/- Office of Environment and Heritage, PO Box 1967, Hurstville BC NSW 1481, by telephone (02) 9585 6940 or by facsimile (02) 9585 6606,

Notice of Final Determination [NSW]

- (c) in person at the Office of Environment and Heritage Information Centre, Level 14, 59–61 Goulburn St, Sydney.

Appointments

CONSTITUTION ACT 1902

Ministerial Arrangements for the Minister for Innovation and Better Regulation

Pursuant to section 36 of the *Constitution Act 1902*, His Excellency the Governor, with the advice of the Executive Council, has authorised the Honourable D F Perrottet MP to act for and on behalf of the Minister for Innovation and Better Regulation for the period from 3 October to 11 October 2015, inclusive.

Dated 30 September 2015.

MIKE BAIRD, MP
Premier

Planning and Environment Notices

NATIONAL PARKS AND WILDLIFE ACT 1974

Wyrrabalong National Park Plan of Management

Yarrahapinni Wetlands National Park Plan of Management

Cataract National Park and State Conservation Area
Plan of Management

Timbarra National Park Plan of Management

Hayters Hill Nature Reserve Plan of Management

Seal Rocks Nature Reserve Plan of Management

Couchy Creek Nature Reserve Plan of Management

Plans of management for Wyrrabalong National Park and for Yarrahapinni Wetlands National Park were adopted by the Minister for the Environment on 25 March 2013.

A plan of management for Cataract National Park and State Conservation Area was adopted by the Minister for the Environment on 8 July 2013.

A plan of management for Timbarra National Park was adopted by the Minister for the Environment on 1 August 2013.

A plan of management for Hayters Hill Nature Reserve was adopted by the Minister for the Environment on 29 October 2013.

A plan of management for Seal Rocks Nature Reserve was adopted by the Minister for the Environment on 18 March 2014.

A plan of management for Couchy Creek Nature Reserve was adopted by the Minister for the Environment on 14 July 2014.

These plans are available at: www.environment.nsw.gov.au.

NATIONAL PARKS AND WILDLIFE ACT 1974

Yuin *Bangguri* (Mountain) Parks

Plan of Management

The Minister for the Environment adopted the plan of management for the Yuin *Bangguri* Mountain Parks (incorporating Gulaga National Park and Biamanga National Park) on 7 October 2014.

The adopted plan is available at www.environment.nsw.gov.au. Additional copies of the plan may be obtained from the NPWS Narooma office, Cnr Graham and Burrawang Streets, Narooma NSW 2546 or by telephone on 02 4476 0800.

Roads and Maritime Notices

ROADS ACT 1993

ORDER

Section 31

Fixing or Variation of Levels of Part Main Road 217 –
Cary Street in the City of Lake Macquarie Council area

Roads and Maritime Services of New South Wales, by this Order under section 31 of the *Roads Act 1993*, fixes or varies the levels of the part of Main Road No 217 – Cary Street between The Boulevarde and Bay Street Toronto, as shown on Roads and Maritime Services plan No DS2014/005543.

TONY POWELL

Infrastructure Property Manager
Roads and Maritime Services of New South Wales
59 Darby Street
Newcastle NSW 2300

(RMS Papers: SF2014/101078)

Mining and Petroleum Notices

Notice is given that the following application has been granted:

EXPLORATION LICENCE APPLICATION

(T14-1069)

No 5023, now Exploration Licence No 8390, NASROY GROUP PTY LTD (ACN 169 094 366), County of St Vincent, Map Sheet (8826), area of 10 units, for Group 1, dated 8 September 2015, for a term until 8 September 2018.

The Hon ANTHONY ROBERTS, MP
Minister for Industry, Resources and Energy

Notice is given that the following applications for renewal have been received:

(13-3535)

Exploration Licence No 6304, DONALD JOHN PERKIN, area of 49 units. Application for renewal received 23 September 2015.

(04-0524)

Exploration Licence No 6319, ALKANE RESOURCES LTD (ACN 000 689 216), area of 7 units. Application for renewal received 24 September 2015.

(15-2133)

Exploration Licence No 6320, ALKANE RESOURCES LTD (ACN 000 689 216), area of 14 units. Application for renewal received 24 September 2015.

(15-2130)

Exploration Licence No 6901, CARPENTARIA EXPLORATION LIMITED (ACN 095 117 981), area of 21 units. Application for renewal received 24 September 2015.

(T12-1150)

Exploration Licence No 7225, PERILYA BROKEN HILL LIMITED (ACN 099 761 289), area of 2 units. Application for renewal received 15 May 2015.

(T09-0091)

Exploration Licence No 7399, CLANCY EXPLORATION LIMITED (ACN 105 578 756), area of 9 units. Application for renewal received 25 September 2015.

(T02-0163)

Mining Purposes Lease No 132 (Act 1973), ALLAN BAMFORD AND FIONA BAMFORD, area of 9416 square metres. Application for renewal received 28 September 2015.

The Hon ANTHONY ROBERTS, MP
Minister for Industry, Resources and Energy

RENEWAL OF CERTAIN AUTHORITIES

Notice is given that the following authorities have been renewed:

(11-2528)

Exploration Licence No 6419, HILLGROVE MINES PTY LTD (ACN 102 660 506), Counties of Clarke and Sandon, Map Sheet (9236, 9237, 9337), area of 70 units, for a further term until 16 May 2018. Renewal effective on and from 3 September 2015.

(T10-0242)

Exploration Licence No 7748, CLANCY EXPLORATION LIMITED (ACN 105 578 756), Counties of Cunningham and Gipps, Map Sheet (8331, 8332), area of 63 units, for a further term until 26 May 2017. Renewal effective on and from 3 September 2015.

(T11-0335)

Exploration Licence No 8084, TRITTON RESOURCES PTY LTD (ACN 100 095 494), Counties of Canbelego and Gregory, Map Sheet (8235, 8335), area of 100 units, for a further term until 10 May 2018. Renewal effective on and from 3 September 2015.

(T12-1229)

Exploration Licence No 8095, CARPENTARIA EXPLORATION LIMITED (ACN 095 117 981), Counties of Blaxland, Cunningham, Dowling and Gipps, Map Sheet (8231), area of 100 units, for a further term until 28 May 2017. Renewal effective on and from 8 September 2015.

(08-7419)

Consolidated Coal Lease No 719 (Act 1973), CENTENNIAL MANNERING PTY LTD (ACN 101 509 120), Parish of Wallarah, County of Northumberland, Map Sheet (), area of 1791 hectares, for a further term until 22 September 2020. Renewal effective on and from 16 September 2015.

(14-2412)

Mining Purposes Lease No 233 (Act 1906), AUSTAR COAL MINE PTY LIMITED (ACN 111 910 822), Parish of Cessnock, County of Northumberland, Map Sheet (9132-2-N), area of 1.973 hectares, for a further term until 1 August 2036. Renewal effective on and from 15 September 2015.

The Hon ANTHONY ROBERTS, MP
Minister for Industry, Resources and Energy

WITHDRAWAL OF APPLICATION FOR RENEWAL

Notice is given that the application for renewal in respect of the following authority has been withdrawn:

(T09-0232)

Exploration Licence No 7460, ARDENT RESOURCES LTD (ACN 140 475 921), Counties of Buller and Drake, Map Sheet (9340), area of 16 units. The authority ceased to have effect on 16 September 2015.

The Hon ANTHONY ROBERTS, MP
Minister for Industry, Resources and Energy

Energy Notices

ELECTRICITY GENERATOR ASSETS (AUTHORISED TRANSACTIONS) ACT 2012

LAND ACQUISITION (JUST TERMS COMPENSATION) ACT 1991

Notice of Compulsory Acquisition of Land
for Purposes of the Act

The Electricity Assets Ministerial Holding Corporation, with the approval of His Excellency the Governor, declares that the lands described in the schedule below are acquired by compulsory process under the provisions of the *Land Acquisition (Just Terms Compensation) Act 1991* for the purposes of the *Electricity Generator Assets (Authorised Transactions) Act 2012*.

Dated at Sydney, this 11th day of September 2015.

GLADYS BEREJKLIAN, MP
Treasurer for
Electricity Assets Ministerial Holding Corporation

Schedule

All that part of the public road within Lot 490 DP 755242 situated at Wyee in the Parish of Morisset, the County of Northumberland and the Local Government Area of Lake Macquarie identified as Lot 1 in DP 1210384.

Primary Industries Notices

ANIMAL DISEASES AND ANIMAL PESTS (EMERGENCY OUTBREAKS) ACT 1991

Appointment of Inspectors

I, Ian Roth, Chief Veterinary Officer, of the Department of Primary Industries, pursuant to section 68 of the *Animal Diseases and Animal Pests (Emergency Outbreaks) Act 1991* (“the Act”), hereby appoint the persons named in the Schedule below as inspectors for the purpose of exercising the functions in sections 45 (1) (a), (b), (d), (e), (g), (h) and (i), and 47 of the Act.

This appointment is in force from the date of signature until 11.59pm on 30 June 2016.

Schedule

Nerida Jann GILL

Anthony John SCHOFIELD

Dated this 25th day of September 2015

IAN ROTH

Chief Veterinary Officer

Department of Primary Industries

(an office within the Department of Industry, Skills and Regional Development)

FISHERIES MANAGEMENT ACT 1994

Sections 8 and 11 Notification – Fishing Closure

Port Stephens and Hunter River

I, Geoff Allan, Deputy Director General Fisheries, with the delegated authority of the Minister for Primary Industries and the Secretary of the Department of Industry, Skills and Regional Development pursuant to sections 227 and 228 of the *Fisheries Management Act 1994* (“the Act”), do by this notification:

1. pursuant to section 11 of the Act, revoke the fishing closure notification titled “Sections 8 & 9 Notification – Urgent Fishing Closure Port Stephens and Hunter River” published in *NSW Government Gazette* No 76 of 4 September 2015 at page 2829 and any notification revived as a result of this revocation, and
2. pursuant to section 8 of the Act, prohibit the taking of any species of fish, by any person, from the waters described in the Schedule to this notification.

The provisions of this fishing closure have effect in respect of endorsement holders in the Estuary General Fishery despite any provisions in the *Fisheries Management (Estuary General Share Management Plan) Regulation 2006*.

The provisions of this fishing closure have effect in respect of endorsement holders in the Estuary Prawn Trawl Fishery despite any provisions in the *Fisheries Management (Estuary Prawn Trawl Share Management Plan) Regulation 2006*.

This fishing closure has effect for a period commencing on the day of publication of this notification in the Gazette and ending on 31 October 2015, unless sooner amended or revoked.

Schedule

Waters
Port Stephens
That part of Port Stephens known as Tilligerry Creek and its bays and tributaries upstream of the line between:
(a) the point on the mean high water mark nearest to 32°45.299'S, 151°59.857'E on the northern shore of Tilligerry Creek, and
(b) the point on the mean high water mark nearest to 32°45.687'S, 152°0.266'E on the southern shore of Tilligerry Creek.
Hunter River
That part of the Hunter River known as Fullerton Cove upstream of the line between
(a) the point on the mean high water mark nearest to 32°51.394'S, 151° 47.564'E on the eastern shore of Fullerton Cove, and
(b) the point on the mean high water mark nearest to 32°51.386'S, 151°46.908'E on the southern shore of Fullerton Cove, and
(c) the point on the mean high water mark nearest to 32°50.517'S, 151°46.160'E on the northern shore of Fullerton Cove.

In this Schedule, latitude and longitude coordinates are in WGS84 datum.

Dated this 29th day of September 2015

Dr GEOFF ALLAN

Deputy Director General Fisheries

Department of Primary Industries

(an office within the Department of Industry, Skills and Regional Development)

Note: The purpose of this fishing closure is to prohibit the taking of fish because of a pollution event.

RURAL ASSISTANCE ACT 1989

NSW Rural Assistance Authority Board

Appointment of Members

I, Niall Mark Blair, MLC, Minister for Primary Industries make the following appointments:

1. Pursuant to section 9 and Schedule 1 of the *Rural Assistance Act 1989*, I appoint the persons listed in column 1 of the table below as members of the New South Wales Rural Assistance Authority Board, having met the statutory criteria specified in column 2 of the table, for a term commencing on the date of this instrument and expiring on the date specified in column 3 of the table.

Name of Member	Statutory criteria met	Expiry of Term
Robert Rolfe MacArthur BROWN	Section 9 (3) (c)	30 June 2016
Wendy Margaret TUCKERMAN	Section 9 (3) (c)	30 June 2016
David Andrew LOCKE	Section 9 (3) (b)	30 June 2017
Barbara Ann CLARK	Section 9 (3) (b)	30 June 2017
Markeeta GIBSON	Section 9 (3) (a)	30 June 2018
David William Learmonth PALMER	Section 9 (3) (a)	30 June 2018

2. Pursuant to clause 2 of Schedule 1 to the Act I appoint David William Learmonth PALMER as Chairperson of the Board.

Signed this Eighteenth day of September 2015.

NIALL MARK BLAIR, MLC

Minister for Primary Industries

Crown Lands Notices

1300 886 235 www.crownland.nsw.gov.au

ARMIDALE OFFICE

ROADS ACT 1993 ORDER

Transfer of a Crown Road to a Council

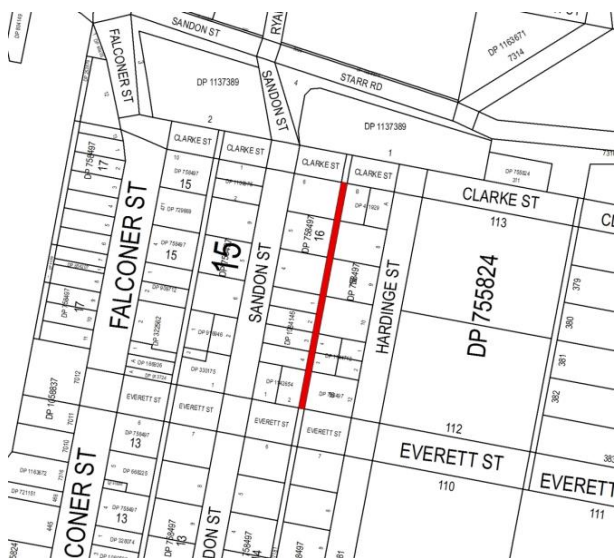
In pursuance of the provisions of section 151, *Roads Act 1993*, the Crown road specified in Schedule 1 is hereby transferred to the Roads Authority specified in Schedule 2 hereunder, and as from the date of publication of this notice, the road specified in schedule 1 ceases to be a Crown road.

The Hon NIALL BLAIR, MLC
Minister for Lands and Water

Schedule 1

Parish – Falconer; County – Sandon
Land District – Armidale; LGA – Guyra Shire

Crown road shown coloured in red on diagram hereunder.



Schedule 2

Roads Authority: Gwydir Shire Council
Council Reference: G07/6844
Lands Reference: 15/08437

DUBBO OFFICE

NOTICE OF PURPOSE OTHER THAN THE DECLARED PURPOSE PURSUANT TO SECTION 34A (2) (b) OF THE CROWN LANDS ACT 1989

Pursuant to section 34A (2) (b) of the *Crown Lands Act 1989*, the Crown reserve(s) specified in Column 2 of the Schedule is to be used or occupied under a relevant interest granted for the purpose(s) specified in Column 1 of the Schedule where such use or occupation is other than the declared purpose of the reserve.

The Hon NIALL BLAIR, MLC
Minister for Lands and Water

Schedule

Column 1

Agriculture; Grazing

Column 2

Reserve No 7237
Public Purpose: Pound
Notified: 22 September 1888
File Reference: 15/05721
Reserve No 94388
Public Purpose: Future
Public Requirements
Notified: 13 March 1981
File Reference: 15/05721
Reserve No 94389
Public Purpose: Future
Public Requirements
Notified: 13 March 1981
File Reference: 15/05721

Schedule

Column 1

Grazing; Pump and Pipeline

Column 2

Reserve No 75644
Public Purpose: Future
Public Requirements
Notified: 27 February 1953
File Reference: 15/00827

GOULBURN OFFICE

NOTICE OF PURPOSE OTHER THAN THE DECLARED PURPOSE PURSUANT TO SECTION 34A (2) (b) OF THE CROWN LANDS ACT 1989

Pursuant to section 34A (2) (b) of the *Crown Lands Act 1989*, the Crown reserve(s) specified in Column 2 of the Schedule is to be used or occupied under a relevant interest granted for the purpose(s) specified in Column 1 of the Schedule where such use or occupation is other than the declared purpose of the reserve.

The Hon NIALL BLAIR, MLC
Minister for Lands and Water

Column 1	Schedule	Column 2
Grazing		Reserve No 90440 Public Purpose: Future Public Requirements Notified: 10 May 1974 File Reference: 14/08634
		Reserve No 90446 Public Purpose: Future Public Requirements Notified: 17 May 1974 File Reference: 14/08634
		Reserve No 94321 Public Purpose: Future Public Requirements Notified: 20 February 1981 File Reference: 14/06641

GRAFTON OFFICE

NOTIFICATION OF CLOSING OF A ROAD

In pursuance of the provisions of the *Roads Act 1993*, the road hereunder described is closed and the lands comprised therein cease to be public road and the rights of passage and access that previously existed in relation to the road is extinguished. Upon closing, title to the land, comprising the former public road, vests in the body specified in the Schedule hereunder.

The Hon NIALL BLAIR, MLC
Minister for Lands and Water

Description

*Parish – Adelong; County – Wynyard
Land District – Tumut; LGA – Tumut*

Road Closed: Lot 1 DP 1212059
File No: 15/01056

Schedule

On closing, the land within Lot 1 DP 1212059 remains vested in the State of New South Wales as Crown land.

NOTIFICATION OF CLOSING OF A ROAD

In pursuance of the provisions of the *Roads Act 1993*, the road hereunder described is closed and the lands comprised therein cease to be public road and the rights of passage and access that previously existed in relation to the road is extinguished. Upon closing, title to the land, comprising the former public road, vests in the body specified in the Schedule hereunder.

The Hon NIALL BLAIR, MLC
Minister for Lands and Water

Description

*Parish – Sebastopol; County – Clarendon
Land District – Cootamundra Central; LGA – Temora*

Road Closed: Lots 1–2 DP 1210506
File No: 15/01057

Schedule

On closing, the land within Lot 1 DP 1210506 remains vested in the State of New South Wales as Crown land.

On closing, the land within Lot 2 DP 1210506 becomes vested in the State of New South Wales as Crown Land.

Council's reference: NO:NMB:L/01/01

NOTIFICATION OF CLOSING OF A ROAD

In pursuance of the provisions of the *Roads Act 1993*, the road hereunder described is closed and the lands comprised therein cease to be public road and the rights of passage and access that previously existed in relation to the road is extinguished. Upon closing, title to the land, comprising the former public road, vests in the body specified in the Schedule hereunder.

The Hon NIALL BLAIR, MLC
Minister for Lands and Water

Description

*Parish – Gooninbar; County – Rous
Land District – Murwillumbah; LGA – Tweed*

Road Closed: Lot 1 DP 1206365
File No: 08/10924

Schedule

On closing, the land within Lot 1 DP 1206365 remains vested in the State of New South Wales as Crown land.

NOTIFICATION OF CLOSING OF A ROAD

In pursuance of the provisions of the *Roads Act 1993*, the road hereunder described is closed and the lands comprised therein cease to be public road and the rights of passage and access that previously existed in relation to the road is extinguished. Upon closing, title to the land, comprising the former public road, vests in the body specified in the Schedule hereunder.

The Hon NIALL BLAIR, MLC
Minister for Lands and Water

Description

*Parish – Mayne; County – Stapylton
Land District – Warialda; LGA – Moree Plains*

Road Closed: Lot 2 DP 1206360
File No: 14/07101

Schedule

On closing, the land within Lot 2 DP 1206360 remains vested in the State of New South Wales as Crown land.

NOTIFICATION OF CLOSING OF A ROAD

In pursuance of the provisions of the *Roads Act 1993*, the road hereunder described is closed and the lands comprised therein cease to be public road and the rights of passage and access that previously existed in relation to the road is extinguished. Upon closing, title to the land, comprising the former public road, vests in the body specified in the Schedule hereunder.

The Hon NIALL BLAIR, MLC
Minister for Lands and Water

Description

*Parish – Eastlake; County – Denham
Land District – Narrabri; LGA – Walgett*

Road Closed: Lot 1 DP 1187179
File No: ME02H343

Schedule

On closing, the land within Lot 1 DP 1187179 remains vested in the State of New South Wales as Crown land.

NOTIFICATION OF CLOSING OF A ROAD

In pursuance of the provisions of the *Roads Act 1993*, the road hereunder described is closed and the lands comprised therein cease to be public road and the rights of passage and access that previously existed in relation to the road is extinguished. Upon closing, title to the land, comprising the former public road, vests in the body specified in the Schedule hereunder.

The Hon NIALL BLAIR, MLC
Minister for Lands and Water

Description

*Parish – Eastlake; County – Denham
Land District – Narrabri; LGA – Walgett*

Road Closed: Lot 2 DP 1187179
File No: ME02H343

Schedule

On closing, the land within Lot 2 DP 1187179 remains vested in the State of New South Wales as Crown land.

NOTIFICATION OF CLOSING OF A ROAD

In pursuance of the provisions of the *Roads Act 1993*, the road hereunder described is closed and the lands comprised therein cease to be public road and the rights of passage and access that previously existed in relation to the road is extinguished. Upon closing, title to the land, comprising the former public road, vests in the body specified in the Schedule hereunder.

The Hon NIALL BLAIR, MLC
Minister for Lands and Water

Description

*Parish – Southampton; County – Clarence
Land District – Grafton; LGA – Clarence Valley*

Road Closed: Lot 100 DP 1208116
File No: 12/06084

Schedule

On closing, the land within Lot 100 DP 1208116 becomes vested in the State of New South Wales as Crown Land.

NOTIFICATION OF CLOSING OF A ROAD

In pursuance of the provisions of the *Roads Act 1993*, the road hereunder described is closed and the lands comprised therein cease to be public road and the rights of passage and access that previously existed in relation to the road is extinguished. Upon closing, title to the land, comprising the former public road, vests in the body specified in the Schedule hereunder.

The Hon NIALL BLAIR, MLC
Minister for Lands and Water

Description

*Parish – Everett; County – Hardinge
Land District – Armidale; LGA – Guyra*

Road Closed: Lot 1 DP 1211226
File No: 14/09050

Schedule

On closing, the land within Lot 1 DP 1211226 remains vested in the State of New South Wales as Crown land.

NOTIFICATION OF CLOSING OF A ROAD

In pursuance of the provisions of the *Roads Act 1993*, the road hereunder described is closed and the lands comprised therein cease to be public road and the rights of passage and access that previously existed in relation to the road is extinguished. Upon closing, title to the land, comprising the former public road, vests in the body specified in the Schedule hereunder.

The Hon NIALL BLAIR, MLC
Minister for Lands and Water

Description

*Parish – Tenterfield; County – Clive
Land District – Tenterfield; LGA – Tenterfield*

Road Closed: Lots 1–3 DP 1211618
File No: 14/09224

Schedule

On closing, the land within Lots 1–3 DP 1211618 remains vested in the State of New South Wales as Crown land.

NOTIFICATION OF CLOSING OF A ROAD

In pursuance of the provisions of the *Roads Act 1993*, the road hereunder described is closed and the lands comprised therein cease to be public road and the rights of passage and access that previously existed in relation to the road is extinguished. Upon closing, title to the land, comprising the former public road, vests in the body specified in the Schedule hereunder.

The Hon NIALL BLAIR, MLC
Minister for Lands and Water

Description

*Parish – Tenterfield; County – Clive
Land District – Tenterfield; LGA – Tenterfield*

Road Closed: Lot 4 DP 1211616
File No: 14/09227

Schedule

On closing, the land within Lot 4 DP 1211616 remains vested in the State of New South Wales as Crown land.

NOTIFICATION OF CLOSING OF A ROAD

In pursuance of the provisions of the *Roads Act 1993*, the road hereunder described is closed and the lands comprised therein cease to be public road and the rights of passage and access that previously existed in relation to the road is extinguished. Upon closing, title to the land, comprising the former public road, vests in the body specified in the Schedule hereunder.

The Hon NIALL BLAIR, MLC
Minister for Lands and Water

Description

*Parish – Mittagong; County – Camden
Land District – Moss Vale; LGA – Wingecarribee*

Road Closed: Lot 1 DP 1212388
File No: 15/02203

Schedule

On closing, the land within Lot 1 DP 1212388 remains vested in the State of New South Wales as Crown land.

NOTIFICATION OF CLOSING OF A ROAD

In pursuance of the provisions of the *Roads Act 1993*, the road hereunder described is closed and the lands comprised therein cease to be public road and the rights of passage and access that previously existed in relation to the road is extinguished. Upon closing, title to the land, comprising the former public road, vests in the body specified in the Schedule hereunder.

The Hon NIALL BLAIR, MLC
Minister for Lands and Water

Description

*Parish – Collombatti; County – Dudley
Land District – Kempsey; LGA – Kempsey*

Road Closed: Lot 2 DP 1209288
File No: 14/02935

Schedule

On closing, the land within Lot 2 DP 1209288 remains vested in the State of New South Wales as Crown land.

**NOTICE OF PURPOSE OTHER THAN
THE DECLARED PURPOSE PURSUANT
TO SECTION 34A (2) (b) OF THE
CROWN LANDS ACT 1989**

Pursuant to section 34A (2) (b) of the *Crown Lands Act 1989*, the Crown reserve(s) specified in Column 2 of the Schedule is to be used or occupied under a relevant interest granted for the purpose(s) specified in Column 1 of the Schedule where such use or occupation is other than the declared purpose of the reserve.

The Hon NIALL BLAIR, MLC
Minister for Lands and Water

Schedule

Column 1	Column 2
Grazing	Reserve No 33093 Public Purpose: Public Recreation Notified: 10 August 1901 File Reference: 15/03456

Schedule

Column 1	Column 2
Concrete Ramp; Wet Area	Reserve No 1011748 Public Purpose: Regional Requirements Notified: 18 August 2006 File Reference: 15/01182

Schedule

Column 1	Column 2
Concrete Ramp	Reserve No 56146 Public Purpose: Generally Notified: 11 May 1923 File Reference: 15/01182 Reserve No 1011268 Public Purpose: Future Public Requirements Notified: 3 February 2006 File Reference: 15/01182

GRIFFITH OFFICE

ESTABLISHMENT OF RESERVE TRUST

Pursuant to section 92 (1) of the *Crown Lands Act 1989*, the reserve trust specified in Column 1 of the Schedule hereunder is established under the name stated in that Column and is appointed as trustee of the reserve specified opposite thereto in Column 2 of the Schedule.

The Hon NIALL BLAIR, MLC
Minister for Lands and Water

Schedule

Column 1	Column 2
Whitton Public School Environmental Reserve Trust	Dedication No 1000598 Public Purpose: Public School Site (Addition) Notified: 26 June 1931 File Reference: 15/09161

**NOTICE OF PURPOSE OTHER THAN
THE DECLARED PURPOSE PURSUANT
TO SECTION 34A (2) (b) OF THE
CROWN LANDS ACT 1989**

Pursuant to section 34A (2) (b) of the *Crown Lands Act 1989*, the Crown reserve(s) specified in Column 2 of the Schedule is to be used or occupied under a relevant interest granted for the purpose(s) specified in Column 1 of the Schedule where such use or occupation is other than the declared purpose of the reserve.

The Hon NIALL BLAIR, MLC
Minister for Lands and Water

Schedule

Column 1	Column 2
Grazing	Reserve No 753070 Public Purpose: Future Public Requirements Notified: 29 June 2007 File Reference: 11/10730

Column 1	Schedule	Column 2
Channel		Reserve No 656 Public Purpose: Travelling Stock Notified: 1 July 1874 File Reference: 14/06740
		Reserve No 26966 Public Purpose: Travelling Stock Notified: 11 December 1897 File Reference: 14/06740
		Dedication No 560008 Public Purpose: Public Recreation Notified: 6 December 1902 File Reference: 14/06740

NEWCASTLE OFFICE

NOTIFICATION OF CLOSING OF A ROAD

In pursuance of the provisions of the *Roads Act 1993*, the road hereunder described is closed and the lands comprised therein cease to be public road and the rights of passage and access that previously existed in relation to the road is extinguished. Upon closing, title to the land, comprising the former public road, vests in the body specified in the Schedule hereunder.

The Hon NIALL BLAIR, MLC
Minister for Lands and Water

Description

*Parish – Dandaloo; County – Kennedy
Land District – Parkes; LGA – Lachlan*

Road Closed: Lot 1 DP 1200339
File No: 13/12452

Schedule

On closing, the land within Lot 1 DP 1200339 remains vested in the State of New South Wales as Crown land.

NOTIFICATION OF CLOSING OF A ROAD

In pursuance of the provisions of the *Roads Act 1993*, the road hereunder described is closed and the lands comprised therein cease to be public road and the rights of passage and access that previously existed in relation to the road is extinguished. Upon closing, title to the land, comprising the former public road, vests in the body specified in the Schedule hereunder.

The Hon NIALL BLAIR, MLC
Minister for Lands and Water

Description

*Parish – Cadalgulee; County – Gipps
Land District – Forbes; LGA – Forbes*

Road Closed: Lot 1 DP 1211957
File No: CL/00247: CM

Schedule

On closing, the land within Lot 1 DP 1211957 remains vested in the State of New South Wales as Crown land.

NOTIFICATION OF CLOSING OF A ROAD

In pursuance of the provisions of the *Roads Act 1993*, the road hereunder described is closed and the lands comprised therein cease to be public road and the rights of passage and access that previously existed in relation to the road is extinguished. Upon closing, title to the land, comprising the former public road, vests in the body specified in the Schedule hereunder.

The Hon NIALL BLAIR, MLC
Minister for Lands and Water

Description

*Parish – Murrumboola; County – Harden
Land District – Young; LGA – Harden*

Road Closed: Lots 16–17 DP 1198562
File No: 13/15661: CM

Schedule

On closing, the land within Lots 16–17 DP 1198562 remains vested in the State of New South Wales as Crown land.

NOTIFICATION OF CLOSING OF A ROAD

In pursuance of the provisions of the *Roads Act 1993*, the road hereunder described is closed and the lands comprised therein cease to be public road and the rights of passage and access that previously existed in relation to the road is extinguished. Upon closing, title to the land, comprising the former public road, vests in the body specified in the Schedule hereunder.

The Hon NIALL BLAIR, MLC
Minister for Lands and Water

Description

*Parish – Harwood; County – Clarence
Land District – Grafton; LGA – Clarence Valley*

Road Closed: Lot 1 DP 1212389
File No: 15/05085

Schedule

On closing, the land within Lot 1 DP 1212389 remains vested in Clarence Valley Council as operational land for the purposes of the *Local Government Act 1993*.

Council Reference: 1394452

NOTIFICATION OF CLOSING OF A ROAD

In pursuance of the provisions of the *Roads Act 1993*, the road hereunder described is closed and the lands comprised therein cease to be public road and the rights of passage and access that previously existed in relation to the road is extinguished. Upon closing, title to the land, comprising the former public road, vests in the body specified in the Schedule hereunder.

The Hon NIALL BLAIR, MLC
Minister for Lands and Water

Description

*Parish – Mandolong; County – Northumberland
Land District – Gosford; LGA – Lake Macquarie*

Road Closed: Lot 1 DP 1202811, Lot 1 DP 1202946
File No: 13/00447

Schedule

On closing, the land within Lot 1 DP 1202811, Lot 1 DP 1202946 remains vested in the State of New South Wales as Crown land.

NOTIFICATION OF CLOSING OF A ROAD

In pursuance of the provisions of the *Roads Act 1993*, the road hereunder described is closed and the lands comprised therein cease to be public road and the rights of passage and access that previously existed in relation to the road is extinguished. Upon closing, title to the land, comprising the former public road, vests in the body specified in the Schedule hereunder.

The Hon NIALL BLAIR, MLC
Minister for Lands and Water

Description

*Parish – Heddon; County – Northumberland
Land District – Maitland; LGA – Cessnock*

Road Closed: Lot 2 DP 1211834
File No: 14/11060: JT

Schedule

On closing, the land within Lot 2 DP 1211834 remains vested in the State of New South Wales as Crown land.

NOTIFICATION OF CLOSING OF A ROAD

In pursuance of the provisions of the *Roads Act 1993*, the road hereunder described is closed and the lands comprised therein cease to be public road and the rights of passage and access that previously existed in relation to the road is extinguished. Upon closing, title to the land, comprising the former public road, vests in the body specified in the Schedule hereunder.

The Hon NIALL BLAIR, MLC
Minister for Lands and Water

Description

*Parish – Nyngan; County – Oxley
Land District – Nyngan; LGA – Bogan*

Road Closed: Lot 1 DP 1203700 (subject to easement for Transmission Line created by Deposited Plan 1203700)
File No: 10/14248 RS

Schedule

On closing, the land within Lot 1 DP 1203700 remains vested in the State of New South Wales as Crown land.

On closing, the land within Lot 1 DP1203700 becomes vested in the State of New South Wales as Crown Land.

Council's reference: 10/14248

NOTIFICATION OF CLOSING OF A ROAD

In pursuance of the provisions of the *Roads Act 1993*, the road hereunder described is closed and the lands comprised therein cease to be public road and the rights of passage and access that previously existed in relation to the road is extinguished. Upon closing, title to the land, comprising the former public road, vests in the body specified in the Schedule hereunder.

The Hon NIALL BLAIR, MLC
Minister for Lands and Water

Description

*Parish – Barton; County – Narromine
Land District – Dubbo; LGA – Narromine*

Road Closed: Lot 1 DP 1212130
File No: 09/11858

Schedule

On closing, the land within Lot 1 DP 1212130 remains vested in the State of New South Wales as Crown land.

NOTIFICATION OF CLOSING OF A ROAD

In pursuance of the provisions of the *Roads Act 1993*, the road hereunder described is closed and the lands comprised therein cease to be public road and the rights of passage and access that previously existed in relation to the road is extinguished. Upon closing, title to the land, comprising the former public road, vests in the body specified in the Schedule hereunder.

The Hon NIALL BLAIR, MLC
Minister for Lands and Water

Description

*Parish – Narara; County – Northumberland
Land District – Gosford; LGA – Gosford*

Road Closed: Lot 2 DP 1204673
File No: 11/02450

Schedule

On closing, the land within Lot 2 DP 1204673 remains vested in the State of New South Wales as Crown land.

NOWRA OFFICE

ADDITION TO RESERVED CROWN LAND

Pursuant to section 88 of the *Crown Lands Act 1989*, the Crown land specified in Column 1 of the Schedule hereunder is added to the reserved land specified opposite thereto in Column 2 of the Schedule.

The Hon NIALL BLAIR, MLC
Minister for Lands and Water

Schedule

Column 1	Column 2
Land District: Moruya	Reserve No 85999
Local Government Area: Eurobodalla Shire Council	Public Purpose: Public Recreation
Locality: Surfside, Batemans Bay	Notified: 14 October 1966
Lot 81 DP No 1211389	Lot 7009 DP No 1125971
Parish East Nelligen	Parish East Nelligen
County St Vincent	County St Vincent
Area: 1.668ha	New Area: 1.893ha
File Reference: NA81R215	

**NOTICE OF PURPOSE OTHER THAN
THE DECLARED PURPOSE PURSUANT
TO SECTION 34A (2) (b) OF THE
CROWN LANDS ACT 1989**

Pursuant to section 34A (2) (b) of the *Crown Lands Act 1989*, the Crown reserve(s) specified in Column 2 of the Schedule is to be used or occupied under a relevant interest granted for the purpose(s) specified in Column 1 of the Schedule where such use or occupation is other than the declared purpose of the reserve.

The Hon NIALL BLAIR, MLC
Minister for Lands and Water

Schedule

Column 1	Column 2
Reclamation; Jetty; Wet Area	Reserve No 1011528 Public Purpose: Access and Public Requirements, Tourism Purposes and Environmental and Heritage Conservation Notified: 9 June 2006 File Reference: 15/05011

Schedule

Column 1	Column 2
Reclamation	Reserve No 56146 Public Purpose: Generally Notified: 11 May 1923 File Reference: 15/05011 Reserve No 1011268 Public Purpose: Future Public Requirements Notified: 3 February 2006 File Reference: 15/05011

ORANGE OFFICE

**NOTICE OF PURPOSE OTHER THAN
THE DECLARED PURPOSE PURSUANT
TO SECTION 34A (2) (b) OF THE
CROWN LANDS ACT 1989**

Pursuant to section 34A (2) (b) of the *Crown Lands Act 1989*, the Crown reserve(s) specified in Column 2 of the Schedule is to be used or occupied under a relevant interest granted for the purpose(s) specified in Column 1 of the Schedule where such use or occupation is other than the declared purpose of the reserve.

The Hon NIALL BLAIR, MLC
Minister for Lands and Water

Schedule

Column 1	Column 2
Sporting Facilities	Reserve No 757068 Public Purpose: Future Public Requirements Notified: 29 June 2007 File Reference: 14/02005

SYDNEY METROPOLITAN OFFICE

ERRATUM

In the notification appearing in the *New South Wales Government Gazette* No 79 of 18 September 2015, folio 2954, under the heading "Roads Act 1993, Order, Transfer of a Crown Road to Council", replace Schedule 1 description "Foxhall Road" with "Foxall Road".

**NOTICE OF PURPOSE OTHER THAN
THE DECLARED PURPOSE PURSUANT
TO SECTION 34A (2) (b) OF THE
CROWN LANDS ACT 1989**

Pursuant to section 34A (2) (b) of the *Crown Lands Act 1989*, the Crown reserve(s) specified in Column 2 of the Schedule is to be used or occupied under a relevant interest granted for the purpose(s) specified in Column 1 of the Schedule where such use or occupation is other than the declared purpose of the reserve.

The Hon NIALL BLAIR, MLC
Minister for Lands and Water

Schedule

Column 1	Column 2
Grazing	Reserve No 15814 Public Purpose: Trigonometrical Purposes Notified: 18 June 1892 File Reference: 14/06683

TAREE OFFICE

ROADS ACT 1993

ORDER

Transfer of Crown Road to a Council

In pursuance of the provisions of section 151, *Roads Act 1993*, the Crown road specified in Schedule 1 is hereby transferred to the Roads Authority specified in Schedule 2 hereunder and as from the date of publication of this notice, the road specified in Schedule 1 ceases to be a Crown Road.

The Hon NIALL BLAIR, MLC
Minister for Lands and Water

Schedule 1

1. Crown Public Road, (part Walter Fay Street, Old Bar), Parish Bohnock from 10 metres North of North Eastern corner of Lot 70 DP 1146993 to the North Eastern corner of Lot 3 DP 1102425.
2. Crown Public Road (part Forest Lane, Old Bar), Parish Bohnock from 10 metres West of the North Western corner of Lot 237 DP 1205932 to the north Western corner of Lot 3 DP 1102425.
3. Crown Public Road (part Wyden Street, Old Bar), Parish Bohnock from the Northern boundary of Lot B DP 377867 to the Southern alignment of Old Bar Road.
4. Crown Public Road (part Medowie Road, Old Bar), Parish Bohnock from the Northern alignment of Old

Bar Road to the North Eastern corner of Lot 156 DP 753149.

5. Crown Public Road (part Berber Road, Old Bar), Parish Bohnock from the Western alignment of Medowie Road to 15 metres West of the North Eastern corner of Lot 2 DP 522670.
6. Crown Public Road (part Harrogate Lane, Old Bar), Parish Bohnock from the Northern alignment of Old Bar Road to the South Western corner of Lot 152 DP 753149.
7. Crown Public Road (part Banyula Drive, Old Bar), Parish Bohnock from the South Eastern corner of Lot 58 DP 718546 to 20 metres West of the South Western corner of Lot 9 DP 703118.
8. Crown Public Road (part Molong Road, Old Bar), Parish Bohnock from the North Western corner of Lot 1 DP 709593 to the boundary of Corkwood Street.
9. Crown Public Road (part Leopardwood Street, Old Bar), Parish Bohnock from the Eastern alignment of Waterman Street.

Schedule 2

Roads Authority: Greater Taree City Council

Lands File No TE03H237

WAGGA WAGGA OFFICE

REVOCATION OF RESERVATION OF CROWN LAND

Pursuant to section 90 of the *Crown Lands Act 1989*, the reservation of Crown land specified in Column 1 of the Schedule hereunder is revoked to the extent specified opposite thereto in Column 2 of the Schedule.

The Hon NIALL BLAIR, MLC
Minister for Lands and Water

Schedule

Column 1	Column 2
Land District: Wagga Wagga Local Government Area: Junee Shire Council Locality: Boree, Clarendon (Parish, County) Reserve No 751399 Public Purpose: Future Public Requirements Notified: 29 June 2007 Lot 174 DP No 751399 Parish Boree County Clarendon Lot 175 DP No 751399 Parish Boree County Clarendon	The part being Lot 187 DP No 820894 Parish Boree County Clarendon of an area of 4.714ha

Column 1

Column 2

Lot 187 DP No 820894
Parish Boree
County Clarendon
Lot 188 DP No 820894
Parish Boree
County Clarendon

File Reference: 14/07100
Notes: Sale

WESTERN REGION OFFICE

APPOINTMENT OF TRUST BOARD MEMBERS

Pursuant to section 93 of the *Crown Lands Act 1989*, the persons whose names are specified in Column 1 of the Schedule hereunder are appointed, for the terms of office specified in that Column, as members of the trust board for the reserve trust specified opposite thereto in Column 2, which has been established and appointed as trustee of the reserve referred to opposite thereto in Column 3 of the Schedule.

The Hon NIALL BLAIR, MLC
Minister for Lands and Water

Schedule

Column 1	Column 2	Column 3
Michael Lance TAYLOR (re-appointment) For a term commencing the date of this notice and expiring 17 September 2020.	Lightning Ridge Historical Society Trust	Reserve No 95663 Public Purpose: Preservation of Historical Sites and Buildings Notified: 6 November 1981 Reserve No 96499 Public Purpose: Preservation of Historical Sites and Buildings Notified: 10 December 1982 File Reference: 09/04274

Water Notices

WATER ACT 1912

An application for a licence, under section 10 of Part 2 of the *Water Act 1912*, as amended, has been received as follows:

AMARJIT KAUR BENNING, BALBIR KAUR BENNING, JUSBINDER SINGH BENNING and TARLOCHAN SINGH BENNING for a pump on Bucca Bucca Creek on Lot 41 DP 774615, Parish of Moonee, County of Fitzroy, for farming purposes and irrigation of 2 hectares (10 megalitres). Entitlement by way of permanent transfer. (Ref: 30SL067317).

Any inquiries should be directed to (02) 6641 6500. Written objections, from any local occupier or statutory authority, specifying grounds and how their interests are affected, must be lodged with DPI Water, Locked Bag 10, Grafton NSW 2460, within 28 days of this publication.

BART KELLETT
Water Regulation Officer
Department of Primary Industries (DPI) Water

Other Government Notices

APPRENTICESHIP AND TRAINEESHIP ACT 2001

Notice is given that the Commissioner for Vocational Training has **established** a Vocational Training Order for the recognised traineeship vocations of:

- Transport and Logistics – Marina Operations

under section 6 of the *Apprenticeship and Traineeship Act 2001*.

The Order specifies a number of matters relating to the required training for the vocation including the terms of the traineeship probationary periods and qualifications to be undertaken.

The Order will take effect from the date of publication in the *NSW Government Gazette*.

Copies of the Order may be inspected at any State Training Services Regional office of the NSW Department of Industry or on the internet at:

https://www.training.nsw.gov/cib_vto/cibs/cib_637.html

APPRENTICESHIP AND TRAINEESHIP ACT 2001

Notice is given that the Commissioner for Vocational Training has **established** a Vocational Training Order for the recognised traineeship vocations of:

- Community Services – Ageing Support
- Community Services – Community Services
- Community Services – Individual Support
- Community Services – Mental Health Peer Work

under section 6 of the *Apprenticeship and Traineeship Act 2001*.

The Order specifies a number of matters relating to the required training for the vocation including the terms of the traineeship probationary periods and qualifications to be undertaken.

The Order will take effect from the date of publication in the *NSW Government Gazette*.

Copies of the Order may be inspected at any State Training Services Regional office of the NSW Department of Industry or on the internet at:

https://www.training.nsw.gov/cib_vto/cibs/cib_635.html

Notice is also given that the following recognised traineeship vocations have been **repealed**:

- Community Services – Aged Care
- Community Services – Community Services Work
- Community Services – Home and Community Care

APPRENTICESHIP AND TRAINEESHIP ACT 2001

Notice is given that the Commissioner for Vocational Training has **established** a Vocational Training Order for the recognised traineeship vocations of:

- Health Services – Audiometry
- Health Services – Massage Therapy
- Health Services – Pathology Assistance
- Health Services – Pathology Collection

under section 6 of the *Apprenticeship and Traineeship Act 2001*.

The Order specifies a number of matters relating to the required training for the vocation including the terms of the traineeship probationary periods and qualifications to be undertaken.

The Order will take effect from the date of publication in the *NSW Government Gazette*.

Copies of the Order may be inspected at any State Training Services Regional office of the NSW Department of Industry or on the internet at:

https://www.training.nsw.gov/cib_vto/cibs/cib_636.html

Notice is also given that the following recognised traineeship vocations have been **repealed**:

- Health Services – Aromatherapy
- Health Services – Audiometric Assessment
- Health Services – Massage Therapy Practice
- Health Services – Nutrition and Dietetic Assistance
- Health Services – Optical Technology
- Health Services – Pathology
- Health Services – Pathology (Collection)
- Health Services – Pathology (Pathology Assistance)
- Health Services – Supervision

ASSOCIATIONS INCORPORATION ACT 2009

Cancellation of Incorporation Pursuant to Section 74

Take notice that the incorporation of the following associations is cancelled by this notice pursuant to section 74 of the *Associations Incorporation Act 2009*.

ARAOVITON ASSOCIATION OF NSW AI KARYE CLUB INCORPORATED	INC9888356
BEAUMONT RD OSHC INCORPORATED	INC9878905
BELMONT MACQUARIE TENNIS CLUB INC	Y0700306
BETTER FUTURE FOR SINGLETON SHIRE ASSOCIATION INCORPORATED	INC1300665
BYRON BAY YOUTH HOUSE INC	Y0178921
CASINO FAMILY SUPPORT SERVICE INCORPORATED	Y1916807

CHALK URBAN ART INCORPORATED	INC9889160
COOLAMON RURAL WOMEN'S GATHERING INCORPORATED	INC1301455
GRASSROOTS CHURCH INCORPORATED	INC9889441
HAWKESBURY RAINFOREST NETWORK INCORPORATED	Y2991000
ILLAWARRA DOLLS, BEARS AND CRAFT INCORPORATED	INC9895664
MILTON-ULLADULLA & DISTRICTS COMMUNITY RADIO ASSOCIATION OF BROADCASTERS (MUDCRAB) INCORPORATED –	INC9877194
MY DARLING PATRICIA INCORPORATED	INC9897436
PAIT PROFESSIONAL ASSOCIATION OF INTERPRETERS AND TRANSLATORS OF NSW INCORPORATED	Y1717226
SIEM INCORPORATED	INC9887542
UNDEES FOR KIDS INCORPORATED	INC9895204
VINEYARD CARE INC	INC9897504
WHITEHAVEN HEALING/AWARENESS CENTRE INC	INC9893039

Cancellation is effective as at the date of gazettal.

Dated 30th day of September 2015.

ROBYNE LUNNEY
 Delegate of the Commissioner
 NSW Fair Trading

ASSOCIATIONS INCORPORATION ACT 2009

Cancellation of Incorporation Pursuant to Section 76

Take notice that the incorporation of the following associations is cancelled by this notice pursuant to section 76 of the *Associations Incorporation Act 2009*.

AUSTRALIA MEMORABILIA ASSOCIATION INCORPORATED	INC9893129
AUSTRALIAN INTERNATIONAL EXCELLENT BRAND INVESTIGATION ASSOCIATION INCORPORATED	INC1400173
CAMDEN HAVEN ARTS COUNCIL INCORPORATED	Y2232938
CHASARAINBOW INCORPORATED	INC9893914
EDEN GROWTH PLAN INCORPORATED	INC1200412
HALLELUYAH CHRIST CHURCH OF AUSTRALIA INCORPORATED	INC9893395

INSTITUTE OF HUMAN ECOLOGY INNOVATION AND MANAGEMENT INCORPORATED	INC1300833
MARTIN HEATH BALL COMMITTEE INCORPORATED	INC9896873
MUMS LIKE ME ORGANISATION INCORPORATED	INC9895668
ROBIN'S NEST GLOBAL C.H.I.L.D. INCORPORATED	INC1200091
SECURING AUSTRALIA'S FUTURE INCORPORATED	INC9890138
VAKTA MANDIR SYDNEY INCORPORATED	INC9894191

Cancellation is effective as at the date of gazettal.

Dated this 28th September 2015

ROBYNE LUNNEY
 Delegate of the Commissioner
 NSW Fair Trading

ASSOCIATIONS INCORPORATION ACT 2009

Cancellation of Registration Pursuant to Section 80

Take notice that PROVIDENT INCORPORATED (INC9892072) became registered under the *Corporations Act 2001* as DOWNUNDER FOUNDATION LIMITED – ACN 607 565 140, a public company limited by guarantee on the tenth day of August 2015 and accordingly its registration under the *Associations Incorporation Act 2009* is cancelled as of that date.

Dated 30 September 2015.

ROBYNE LUNNEY
 Delegate of the Commissioner
 NSW Fair Trading

GEOGRAPHICAL NAMES ACT 1966

Pursuant to the provisions of section 7A (1) of the *Geographical Names Act 1966*, the Geographical Names Board has this day assigned the recorded names listed hereunder as geographical names.

Thompson Reserve for a reserve adjacent to the Old Hume Highway, near Thompson Place in the suburb of Camden South.

Caroline Chisholm Reserve for a reserve adjacent to Caroline Chisholm Drive in the suburb of Camden South.

The position and extent for these features is recorded and shown within the Geographical Names Register of New South Wales. This information can be accessed through the Board's website at www.gnb.nsw.gov.au.

D MOONEY
 Chairman
 Geographical Names Board

GEOGRAPHICAL NAMES ACT 1966

Pursuant to the provisions of section 10 of the *Geographical Names Act 1966*, the Geographical Names Board has this day assigned the name listed hereunder as a geographical name.

Ibrox Park for a reserve consisting of Lots 2–8 DP 2393 bounded by Derbyshire Road and Balmain Road, in the suburb of Leichhardt.

The position and extent for this feature is recorded and shown within the Geographical Names Register of New South Wales. This information can be accessed through the Board's website at www.gnb.nsw.gov.au.

D MOONEY
Chairman
Geographical Names Board

GEOGRAPHICAL NAMES ACT 1966

Pursuant to the provisions of section 10 of the *Geographical Names Act 1966*, the Geographical Names Board has this day assigned the name listed hereunder as a geographical name.

Marie Bashir Park for a reserve currently known as Narrandera Park, bounded by Douglas Street, Adams Street, Twynam Street and Cadell Street in the suburb of Narrandera.

The position and extent for this feature is recorded and shown within the Geographical Names Register of New South Wales. This information can be accessed through the Board's website at www.gnb.nsw.gov.au.

D MOONEY
Chairman
Geographical Names Board

GEOGRAPHICAL NAMES ACT 1966

Pursuant to the provisions of section 10 of the *Geographical Names Act 1966*, the Geographical Names Board has this day assigned the name listed hereunder as a geographical name.

Mark Foster Reserve for a reserve located in Brush Road in the suburb of Fountaindale.

The position and extent for this feature is recorded and shown within the Geographical Names Register of New South Wales. This information can be accessed through the Board's website at www.gnb.nsw.gov.au.

D MOONEY
Chairman
Geographical Names Board

GEOGRAPHICAL NAMES ACT 1966

Pursuant to the provisions of section 10 of the *Geographical Names Act 1966*, the Geographical Names Board has this day assigned the name listed hereunder as a geographical name.

Watts Reserve for a reserve consisting of Part Lot 98 DP 213760, located at the northern extent of Terragong Avenue, Bawley Point.

The position and extent for this feature is recorded and shown within the Geographical Names Register of New South Wales. This information can be accessed through the Board's website at www.gnb.nsw.gov.au.

D MOONEY
Chairman
Geographical Names Board

GEOGRAPHICAL NAMES ACT 1966

Notice to Amend Locality Boundaries within the Gilgandra and Coonamble Local Government Areas

Pursuant to the provisions of section 10 of the *Geographical Names Act 1966*, the Geographical Names Board hereby notifies that it has on this day amended the locality boundaries of Warrumbungle, Tonderburine, Mount Tenandra, Black Hallow, Gulargambone, Armatree, Curban, Gilgandra and Balladoran within the Gilgandra and Coonamble Local Government Areas as shown on map GNB3076-1.

The position and extent of these features are shown in the Geographical Names Register of New South Wales which can be viewed on the Geographical Names Board's website at www.gnb.nsw.gov.au.

D MOONEY
Chairman
Geographical Names Board

GEOGRAPHICAL NAMES ACT 1966

Notice to Amend Locality Boundaries within the Wollongong Local Government Area to remove the Locality of Penrose

Pursuant to the provisions of section 10 of the *Geographical Names Act 1966*, the Geographical Names Board hereby notifies that it has on this day amended locality boundaries resulting in Avondale absorbing the locality of Penrose in the Wollongong Local Government Area as shown on map GNB3686-5.

The position and extent of these features are shown in the Geographical Names Register of New South Wales which can be viewed on the Geographical Names Board's website at www.gnb.nsw.gov.au.

D MOONEY
Chairman
Geographical Names Board

GEOGRAPHICAL NAMES ACT 1966

Pursuant to the provisions of section 14 of the *Geographical Names Act 1966*, the Geographical Names Board has this day discontinued the name listed hereunder as a geographical name.

Horderns Beach Reserve for a reserve bound by Brighton Street and Bundeena Drive in the suburb of Bundeena.

The position and extent for this feature is recorded and shown within the Geographical Names Register of New South Wales. This information can be accessed through the Board's website at www.gnb.nsw.gov.au.

D MOONEY
Chairman
Geographical Names Board

GEOGRAPHICAL NAMES ACT 1966

Pursuant to the provisions of section 14 of the *Geographical Names Act 1966*, the Geographical Names Board has this day discontinued the name listed hereunder as a geographical name.

Narrandera Park for a reserve bounded by Douglas Street, Adams Street, Twynam Street and Cadell Street in the suburb of Narrandera.

The position and extent for this feature is recorded and shown within the Geographical Names Register of New South Wales. This information can be accessed through the Board's website at www.gnb.nsw.gov.au.

D MOONEY
Chairman
Geographical Names Board

GEOGRAPHICAL NAMES ACT 1966

Pursuant to the provisions of section 14 of the *Geographical Names Act 1966*, the Geographical Names Board has this day discontinued the names listed hereunder as geographical names.

Rouchel Public School for a school previously located at Rouchel Road, Upper Rouchel.

Crowdy Head Public School for a school previously located at Prince Street, Crowdy Head.

Bellimbopinni Public School for a school previously located at Pacific Highway, Bellimbopinni.

Ellangowan Public School for a school previously located at Ellangowan Road, Ellangowan.

Wollombi Public School for a school previously located at 2851 Wollombi Road, Wollombi.

Corinella Public School for a school previously located at Bedgerabong-Burcher Road, Forbes.

Windeyer Public School for a school previously located at Mudgee Road, Windeyer.

Sutton Forest Public School for a school previously located at Illawarra Highway, Sutton Forest.

Errowanbang Public School for a school previously located at Errowanbang, Carcoar.

Badgerys Creek Public School for a school previously located at Badgerys Creek Road, Badgerys Creek.

Reids Flat Public School for a school previously located at Albert Street, Reids Flat.

Eraring Public School for a school previously located at Point Piper Road, Eraring.

Wyong Grove Public School for a school previously located at North Road, Wyong.

Spencer Public School for a school previously located at 4684 Wisemans Ferry Road, Spencer.

Urana Central School for a school now known as Urana Public School, located at William Street, Urana.

Tibooburra Outback School of the Air for a school now known as Tibooburra Outback Public School, located at Briscoe Street, Tibooburra.

Port Macquarie High School for a school now known as Hastings Secondary College, Port Macquarie Campus, located at Owen Street, Port Macquarie.

Westport High School for a school now known as Hastings Secondary College, Westport Campus, located at Findlay Avenue, Port Macquarie.

The position and extent for these feature is recorded and shown within the Geographical Names Register of New South Wales. This information can be accessed through the Board's website at www.gnb.nsw.gov.au.

D MOONEY
Chairman
Geographical Names Board

**HEALTH PRACTITIONER REGULATION
(NEW SOUTH WALES) REGULATION 2010**

The Pharmacy Council of New South Wales
2015 Election of Five (5) Council Members
Election Notice

Nominations

Nominations are hereby invited from local pharmacists to fill the five (5) positions to the Pharmacy Council.

Local Pharmacist means a pharmacist whose principal place of practice is in New South Wales.

The nomination must be made in writing, signed by the candidate and shall contain the full names, residential addresses and signatures of at least two (2) nominators (other than the candidate) who are also local pharmacists.

Candidates may also complete a Candidate Profile Form in a form of a Statutory Declaration which will be included in a Candidate Information Booklet which will accompany voting material if the election is contested.

Nomination and Candidate Profile Forms are available from:

- NSW Electoral Commission's website at www.elections.nsw.gov.au;
- NSW Electoral Commission, Level 25, 201 Kent Street, Sydney, telephone (02) 9290 5924; or
- Pharmacy Council of NSW, Level 6, North Wing, 477 Pitt Street, Sydney, telephone (02) 9219 0284

Lodgement of Nomination and Candidate Profile Forms

Completed Nominations and Candidate Profile Forms must be received by the Returning Officer, NSW Electoral Commission by no later than **12:00 Noon, Thursday 22 October 2015**.

Nomination forms can only be lodged with the Returning Officer at the NSW Electoral Commission:

- By hand: Level 25, 201 Kent Street, Sydney; or
- By post: PO Box 693, Grosvenor Place NSW 1220; or
- By fax: (02) 9290 5939; or
- By email: ballots@elections.nsw.gov.au

Any defect in a nomination or candidate profile form must be rectified prior to the close of nominations at **12:00 Noon, Thursday 22 October 2015**. A candidate may only withdraw his/her nomination in writing so as to be received by the Returning Officer prior to the close of nominations.

Roll of Electors

The roll of persons entitled to vote in this election closes on Thursday, 22 October 2015.

Voting

Should the election be contested, a draw to determine the order of candidates' names on the ballot paper will be conducted at **2:00pm, Thursday 22 October 2015** at the NSW Electoral Commission, Level 25, 201 Kent Street, Sydney. Candidates or their representatives are invited to witness the draw.

A postal ballot will be conducted to close at **12:00 Noon, Monday 30 November 2015**. All local pharmacists financial as at Thursday 22 October 2015 will be included on the roll of electors. Voting material will be posted on **Monday, 2 November 2015**. The method of voting to be observed will be Optional Multi Preferential.

Any enquiries concerning this election should be directed to Diana Kosseifi at the NSW Electoral Commission, on telephone (02) 9290 5924.

COLIN BARRY
Returning Officer
NSW Electoral Commission

**PARENTS AND CITIZENS ASSOCIATIONS
INCORPORATION ACT 1976**

Section 13 (4)

Notice of Incorporation of Parents and Citizens Associations

The following associations are hereby incorporated under the *Parents and Citizens Associations Incorporation Act 1976*.

- Heaton Public School
- Adaminaby Public School
- Narellan Vale Public School
- Kogarah Public School
- Lindfield Public School
- Chalmers Road School
- Middle Dural Public School
- Lewisham Public School
- Darcy Road Public School
- York Public School
- Dalmeny Public School
- Jamison High School
- Hampden Park Public School
- Kingswood High School
- Harrington Street Public School

R/General Counsel
Department of Education

PASSENGER TRANSPORT REGULATION 2007

Clause 76 (1) (b) Valid smartcards

Publication of Terms and Conditions

Transport for NSW, pursuant to clause 76 of the *Passenger Transport Regulation 2007*, publishes the following terms and conditions for the use of a smartcard.

These terms and conditions for the use of a smartcard take effect on and from 2 October 2015

Opal Terms of Use

What is the Opal Card and who are we?

1. **Opal Ticketing System:** The Opal Card (**Opal Card**) is a smartcard designed for use by an electronic ticketing system (**Opal Ticketing System**). The Opal Card can be used as a form of ticketing and payment for public transport services across the greater Sydney region equipped with Opal Card readers (**Opal Card Readers**) on which the Opal Card is an accepted form of fare payment (**Opal Transport Services**). The Opal Card is issued by Transport for NSW (**TfNSW**). A reference

to **us**, **we** or **our** is a reference to TfNSW and, where the context requires, its authorised representatives and agents.

Opal terms of use

2. **Opal Terms of Use:** The reference to “Opal’s terms of use” or “Opal Terms of Use” on the back of the Opal Card is a reference to these Opal Terms of Use as amended from time to time in accordance with section 4 (**Opal Terms of Use**). These Opal Terms of Use are the terms and conditions that apply to your use of the Opal Card and the Opal Ticketing System.

Acceptance

3. **Acceptance of terms:** By ordering, using or registering an Opal Card you agree to be bound by the Opal Terms of Use in force at the time you order, use or register your Opal Card. If you do not agree to be bound, you must refrain from using the Opal Card.
4. **Amendments:** We may, at any time, change any part of these Opal Terms of Use or any other information referred to in these Opal Terms of Use, by updating these Opal Terms of Use or that other information accordingly at opal.com.au (**Opal Website**). Any such changes will take effect when they are published on the Opal Website. If we make any such changes that we consider will adversely affect your use of the Opal Card in a material way, we will take such steps to notify you of those changes as we consider reasonably appropriate (for example, by including a notice on the Opal Website). By continuing to use an Opal Card after any changes are published on the Opal Website, you agree to be bound by those changes. If you do not agree to any such changes, you must refrain from using the Opal Card and you may apply for a refund of the stored value of that Opal Card (**Opal Card Balance**) in accordance with the Opal Refund and Balance Transfer Policy.
5. **Operator’s conditions of carriage:** These Opal Terms of Use apply in addition to conditions of carriage imposed by any provider of public transport services who accepts the Opal Card as payment for use of its services (**Operator**). When using the services of any Operator you must comply with that Operator’s conditions of carriage. We are not responsible for the acts or omissions of any Operator.

Card types

6. **Opal Cards:** We will be issuing Opal Cards that will be reloadable “pay as you go” stored value Opal Cards and non-reloadable Opal Cards.
7. **Reloadable Opal Cards:** You must use the “Adult” Opal Card unless you are entitled to use a different type of Opal Card allowing concessional fares or free travel. You can use a “Child/Youth” Opal Card only if you are (a) aged 4 to 15 years (inclusive), or (b) a full-time NSW/ACT school student aged 16 and older. When using an Opal Card allowing concessional fares or free travel, you must carry and produce upon request proof of your entitlement in accordance with section 59. Further information about the types of reloadable Opal Cards available under the Opal Ticketing System, the criteria for eligibility, the fares charged by Operators and any additional special terms and conditions for reloadable Opal Cards other than the “Adult” Opal Card may also be obtained by calling 13 67 25 (13 OPAL) and from

the Opal Website. Customers who use reloadable Opal Cards other than the “Adult” Opal Card must inform themselves of and comply with any such additional special terms and conditions. If an Opal Card allowing concessional fares or free travel has been issued specifically to you, you must not permit any other person to use that Opal Card. You may not use an Opal Card allowing concessional fares or free travel that has been issued specifically to another person.

8. **Precondition to using a reloadable Opal Card:** You must add value to a reloadable Opal Card before using it to pay for your first trip.
9. **Non-reloadable Opal Cards:** In the future, we will be issuing different types of limited life non-reloadable Opal Cards. They will be subject to special terms and conditions which will be published (including on the Opal Website) as and when they are issued. Customers who use these non-reloadable Opal Cards must inform themselves of and comply with their special terms and conditions. You cannot add value to non-reloadable Opal Cards.
10. **Property of TfNSW:** Opal Cards are and remain our property. We may inspect, de-activate or take possession of an Opal Card or require its return at our discretion without notice at any time.

Acquiring Opal Cards

11. **Opal Channels:** You can acquire Opal Cards through:
 - a. the Opal Website;
 - b. various retailers which are approved as Opal retailers;
 - c. our call centre at 13 67 25 (13 OPAL); and
 - d. any service centres that we establish,(together, the **Opal Channels**).

You may obtain information on Opal Channels and on how and through what Opal Channels you may acquire an Opal Card by calling 13 67 25 (13 OPAL) and from the Opal Website. When acquiring an Opal Card, you must provide all the information that we deem reasonably necessary for us to supply you with the Opal Card of the type you are acquiring. If you receive an Opal Card in the mail, you must activate it in accordance with the procedure specified in the Opal starter pack that accompanies the Opal Card. We are not responsible for any delays in delivering an Opal Card to you if the information you provide is inaccurate, out of date or unclear, or the Opal Card is undeliverable to the address you provide.

You must not obtain an Opal Card by purchasing it from another person. As described in section 46, the sale of an Opal Card for a price is prohibited, and you may not be able to confirm the Opal Card Balance of any such Opal Card, or the Opal Card may have been cancelled by us, whether at the time of purchase or subsequently. This may include circumstances where the Opal Card that you purchase has been lost or stolen, or a “top up” to the Opal Card has been reversed because of an unauthorised credit card transaction involving a lost or stolen credit card.

12. **Responsibility for a child:** If you acquire an Opal Card for use by a person who lacks, by reason of youth, the understanding necessary for these Opal Terms of Use

to be binding on them (**Child**), you are responsible for the use of that Opal Card by that Child.

Use of Opal Cards and Opal Ticketing System

13. **Use of Opal Cards:** You must:
 - a. use the Opal Card and Opal Ticketing System in accordance with these Opal Terms of Use;
 - b. not obtain or attempt to obtain Opal Benefits (as described on the Opal website at <https://www.opal.com.au/en/fares-and-benefits/>) by using an Opal Card or the Opal Ticketing System (including Opal Card Readers) in a way that is inconsistent with these Terms of Use;
 - c. provide us with the information and assistance that we deem reasonably necessary for the effective use of the Opal Card;
 - d. comply with all laws and regulations applicable to your use of the Opal Card;
 - e. keep the Opal Card safe and secure at all times;
 - f. take proper care of the Opal Card, avoid damaging it, keep it flat and not bend or pierce it;
 - g. only use an Opal Card issued by us on the Opal Ticketing System (and you must not use any other smartcards at an Opal Card Reader or any other part of the Opal Ticketing System);
 - h. not misuse, deface, alter, tamper with or deliberately damage or destroy the Opal Card;
 - i. not alter, remove or replace any notices (other than the activation sticker), trademarks or artwork on the Opal Card; and
 - j. not modify, adapt, translate, disassemble, decompile, reverse engineer, create derivative works of, copy or read, obtain or attempt to discover by any means, any (i) encrypted software or encrypted data contained on an Opal Card; or (ii) other software or data forming part of the Opal Ticketing System.
14. **Defective cards:** You must not knowingly use a Damaged or Faulty Opal Card and must immediately report a Damaged or Faulty Opal Card by calling 13 67 25 (13 OPAL) as soon as it is discovered that it is Damaged or Faulty. In relation to an Opal Card:
 - a. **Damaged** means not capable of being read by an Opal Card Reader and subject to physical damage or electronic tampering by you or any other person or event subsequent to the acquisition of that Opal Card; and
 - b. **Faulty** means: (i) not Damaged but not capable of being read by an Opal Card Reader; or (ii) failing to comply with any applicable statutory guarantees.
15. **Accuracy of information:** You represent and warrant that any information that you provide to us is true, accurate and up to date. If the information you provide changes or is out of date, you must notify us of the change as soon as possible.
16. **Opal Website:** If and when you use the Opal Website, you must comply with the [Opal Website Terms of Use](#).
17. **Opal Guidelines:** You must comply with all the procedures, policies and guidelines relating to the Opal Card and the Opal Ticketing System (including the Opal Refund and Balance Transfer Policy, the Opal Privacy Policy, the guidelines in the Opal Website and any starter packs) that are published or issued by us as each may be

amended from time to time in accordance with section 4 (**Opal Guidelines**).

Card registration

18. **Registering an Opal Card:** In order to register an Opal Card you must provide the information necessary to create a customer profile (**Customer Profile**), or alternatively you can permit another person to link your Opal Card to their Customer Profile (in which case that other person will be able to manage your Opal Card as described in section 22). The card identification number and card security code (**Opal Card Number**) of the Opal Card that you are registering will be linked in the Opal Ticketing System to your Customer Profile. More than one Opal Card can be linked to that Customer Profile, but an Opal Card can only be linked to one Customer Profile at any given time.
19. **Registered Card Benefits:** A range of services (**Registered Card Benefits**) are available for registered Opal Cards. Information about Registered Card Benefits can be obtained by calling 13 67 25 (13 OPAL) and from the Opal Website. If a registered Opal Card is lost or stolen and you report it as lost or stolen, the Opal Card Balance of that Opal Card will be protected in accordance with and upon the terms of our refund policy set out at the Opal Website (**Opal Refund and Balance Transfer Policy**).
20. **Changing Registered Card Benefits:** We may change the Registered Card Benefits at any time in accordance with section 4.
21. **Registration on behalf of others:** You may only register and manage the registration of an Opal Card on behalf of:
 - a. a Child under the age of 16, if you are a parent or guardian of that Child; or
 - b. any other person over the age of 16, if you are doing so with their consent (including their consent to disclose any personal information you provide to us about them).
22. **Linking your Opal Card to another person's Customer Profile:** If you allow your Opal Card to be linked to another person's Customer Profile, that person can manage your Opal Card (including after your death). This gives them the ability to:
 - a. access information collected by us in relation to your Opal Card in accordance with the Opal Privacy Policy, including your travel history;
 - b. manage auto top-ups for your Opal Card;
 - c. receive notifications via email or text message regarding the status of your Opal Card;
 - d. apply for and receive a refund of your Opal Card Balance, if they possess your Opal Card;
 - e. transfer your Opal Card Balance to another Opal Card that is linked to their Customer Profile; and
 - f. unlink your Opal Card from their Customer Profile.
23. TfNSW will automatically unlink all Opal Cards from a Customer Profile that is deactivated for any reason, including the death of the account holder. Auto top-ups will be discontinued for unlinked Opal Cards.
24. **Confidentiality:** You must keep all usernames, passwords, personal identification numbers, card security codes and answers to security questions

confidential and you must not disclose this information to any person. You must not enable any other person, application (including any mobile application) or system to access your Customer Profile. We are not responsible for any loss suffered as a result of you disclosing any information, including any username or password contained in your Customer Profile to another person, any application (including any mobile application) or any system. You must also keep the Opal Card Number that is printed on your Opal Card safe and secure. If your Opal Card is unregistered and another person obtains your Opal Card Number, this may allow them to view your recent travel history, register your Opal Card, or link your Opal Card to their own Customer Profile.

25. **Opal Privacy Policy:** We will handle personal information that we collect in relation to the Opal Ticketing System in accordance with our privacy policy (**Opal Privacy Policy**) that is set out at the Opal Website. You consent to our disclosure of your personal information in accordance with the Opal Privacy Policy and relevant legislation relating to personal information and privacy.
26. **Unregistered Opal Cards:** You can acquire an unregistered Opal Card through various retailers which are approved as Opal retailers, and any service centres that we establish. The provisions in these Terms of Use relating to unregistered Opal Cards apply to Opal Cards that are acquired but not registered, and also to registered Opal Cards that have been de-registered.
27. **Card authentication:** When interacting with the Opal Ticketing System, you will comply with any authentication procedures that we reasonably require from time to time. If you cannot satisfy any of our authentication requirements, you may not be able to interact with the Opal Ticketing System including obtaining the Registered Card Benefits.

Payment, fares and balances

28. **Payment for travel:** In connection with your use of an Opal Card, you are responsible for the payment of all fares (including promotional fares, discounted fares or fares with caps) (**Opal Fares**). We also reserve the right to apply charges in connection with the use of the Opal Card (**Opal Charges**). Information about applicable Opal Fares and Opal Charges will be published on the Opal Website and is subject to change from time to time in accordance with section 4. Information about applicable Opal Fares and Opal Charges can also be obtained by calling 13 67 25 (13 OPAL).
29. **Opal Card Balance:** Your Opal Card Balance will be available to pay for Opal Fares and Opal Charges (unless those amounts are transferred or refunded in accordance with the Opal Refund and Balance Transfer Policy, or forfeited in accordance with section 56). You must add value to a reloadable Opal Card sufficient to meet these charges.
30. **Tap on and tap off:** You must tap on at the beginning of your trip and tap off at the end of your trip at an Opal Card Reader except in the case of ferry services to and from Manly. For ferry services to and from Manly only, you must tap on at the beginning of your trip but you do not have to tap off at the end of your trip and you may exit without doing so. Instructions on how to tap on and tap off will be set out in the documentation that is provided with a new Opal Card, and on the Opal Website, and you must comply with those instructions. If you fail to tap on or tap off as required, the Opal Ticketing System is unable to ascertain where you entered or exited the public transport network, as the case may be, and the Opal Card will be charged the default fare for the journey.
See https://www.opal.com.au/en/fares-and-benefits/travelling_with_a_valid_ticket/ for further details on default fares.
31. **Multiple use not permitted:** You can only use an Opal Card for one trip at a time. You must not tap on twice with the same Opal Card in order to pay for another person's trip.
32. **Multiple card use prohibited:** you must not tap on or tap off more than one Opal Card for a journey unless you are assisting another person travelling with you on the journey.
33. **Permitting multiple use prohibited:** you must not permit another person to use your Opal Card without undertaking journeys in order to access Weekly Benefits.
34. **Improper Use of Opal Cards:** Your Opal Card must only be used to pay for travel on an authorised bus, ferry, train or light rail service. You must not tap on and then tap off an Opal Card at different locations, or allow another person to tap on and tap off your Opal Card at different locations on your behalf, if such travel is not undertaken. You must not tap on and then travel by means other than an authorised bus, ferry, train or light rail service to another location and tap off using the same Opal Card.
35. **Tap on and Tap off at the one location:** You are permitted to tap on and then tap off at the same location if you no longer intend to make a journey.
36. **Sufficient funds:** You must not use a reloadable Opal Card to pay the Opal Fare for a trip if the Opal Card Balance of the reloadable Opal Card is: (a) insufficient to pay for it; or (b) a negative balance.
37. **Minimum and maximum balances:** A limit applies to the maximum amount that can be maintained as an Opal Card Balance on an Opal Card, which may vary depending on the type of Opal Card you have. You must not commence a trip if (a) the Opal Card Balance is negative; or (b) the Opal Card Reader declines a tap on due to an insufficient balance.
38. **Authorisation:** You authorise us to deduct all Opal Fares and Opal Charges as and when they are due from the Opal Card Balance of the Opal Card.
39. **Negative balances:** If the Opal Card Balance of a reloadable Opal Card is insufficient to pay for the applicable Opal Fare or is a negative balance, you must add value to the Opal Card in an amount sufficient to pay for your trip before you use it again. You must pay any negative Opal Card Balance on a reloadable Opal Card and, when you add value to it, the added value will be first applied to reduce any negative balance.
40. **Adding value:** You may "top up" or add value to a reloadable Opal Card by paying or transferring value to the Opal Card Balance of the reloadable Opal Card. Information on current methods of adding value can be obtained by calling 13 67 25 (13 OPAL) and from the

Opal Website. Under the Opal Ticketing System, “add value” is also referred to as “top up”.

41. **Balance adjustments:** You may dispute the amount of an Opal Card Balance of your Opal Card and request an adjustment of the Opal Card Balance by calling 13 67 25 (13 OPAL) or by completing and sending the [enquiry form](#) on the Opal Website. An adjustment to an Opal Card Balance will only be made at our discretion. We may adjust an Opal Card Balance retrospectively if we discover that it is incorrect.
42. **Balance transfers:** We will only transfer the Opal Card Balance of an Opal Card to another Opal Card if: (a) both Opal Cards are registered and linked to the same Customer Profile; (b) the entire Opal Card Balance (less any applicable Opal Charges) is being transferred; and (c) the Opal Card from which the transfer is being made has been cancelled.
43. **Opal Benefits not transferred:** Opal Benefits (as described on the Opal website at <https://www.opal.com.au/en/fares-and-benefits/>) are specific to each Opal Card and are not transferrable upon the transfer of the Opal Card Balance of an Opal Card to another Opal Card. For example, any paid journeys accrued for the purpose of the Weekly Travel Reward are not transferred to a new Opal Card.
44. **Auto top up:** If you set up an “auto top up” as one of the Registered Card Benefits for your reloadable Opal Card, you are authorising us to automatically add value to your reloadable Opal Card whenever your Opal Card Balance falls below the required minimum balance by means of an automatic payment from: (a) a credit card; (b) a debit card; or (c) bank or similar account if we make such a service available in the future (**Authorised Payment Source**).

You can obtain information on the minimum and maximum amounts that can be automatically added under an auto top up, the methods by which you can change or terminate an auto top up and the manner in which we will handle the auto top up if your Authorised Payment Source is declined or has expired, by calling 13 67 25 (13 OPAL). You must ensure that your Authorised Payment Source remains valid and current and you must renew your Authorised Payment Source if it has expired or if we request you to do so. If a payment for an auto top up is declined by your Authorised Payment Source, we will reverse that auto top up and cancel the auto top up.

Auto top up is not available for unregistered Opal Cards.

45. **Website and 13 OPAL top ups:**
 - a. **Reversals:** After we receive instructions from you to add value to an Opal Card via the Opal Website or 13 67 25 (13 OPAL) you should tap on at an Opal Card Reader with that Opal Card within 60 days. If you fail to tap on within the 60 days we will reverse the value added back to your credit or debit card as the case may be.
 - b. **Timing:** We will use our reasonable endeavours to ensure timely top ups via the Opal Website or 13 67 25 (13 OPAL) but we will not be responsible for any delays in doing so.

Transfer of your Opal Card

46. **No resale:** You must not sell, or offer to sell, an Opal Card to another person for a price. We may cancel any Opal Card that is sold or offered for sale in breach of this section at any time without notice. If you have an Opal Card that you no longer wish to use, you can apply for a refund of the Opal Card Balance as described below.

Refunds

47. **Opal Refund and Balance Transfer Policy:** We will make refunds for Opal Card Balances as stated in these Opal Terms of Use and in accordance with the Opal Refund and Balance Transfer Policy. The Opal Refund and Balance Transfer Policy also contains the terms and conditions upon which we will transfer the balance of an Opal Card to another Opal Card.
48. **Applications for refunds:** Where we de-activate or take possession of an Opal Card or require its return under section 10, cancel an Opal Card under section 53, or expire an Opal Card under section 54 you may apply for a refund in accordance with the Opal Refund and Balance Transfer Policy.
49. **Right to reject application for refund:** If you make an application for a refund under section 48, we may reject the claim if you have not complied with any of the provisions of these Opal Terms of Use or if we have reason to suspect that an offence under any law may have been or may be committed.
50. **Lost or stolen – registered Opal Cards:** If you have lost a registered Opal Card or the registered Opal Card has been stolen, you must notify us as soon as possible by calling 13 67 25 (13 OPAL) or through the Opal Website, so that we can cancel it and arrange for a balance transfer in accordance with the Opal Refund and Balance Transfer Policy. No refunds will be given for lost or stolen registered Opal Cards. You remain liable for Opal Fares and Opal Charges incurred on the Opal Card until you report it to us as lost or stolen.
51. **Lost or stolen – unregistered Opal Cards:** No refunds or balance transfers will be given for lost or stolen unregistered Opal Cards.
52. **Defective cards:** If an Opal Card is Damaged or Faulty: (a) you must notify us as soon as possible by calling 13 67 25 (13 OPAL) to request a replacement Opal Card or a refund; and (b) if you want a refund, you must physically return the Opal Card by mailing or delivering to us the Opal Card together with a signed and completed “Opal card refund form” that is contained in the Opal Refund and Balance Transfer Policy. If you do not physically return a Damaged or Faulty Opal Card you will not be entitled to a refund.

Cancellation and expiration

53. **Cancellation:** We may cancel an Opal Card if:
 - a. we are satisfied that it is lost, stolen, Damaged or Faulty;
 - b. we are satisfied that you have not complied with any of the provisions of these Opal Terms of Use or if we have reason to suspect that an offence under any law may have been or may be committed; or
 - c. we deem it reasonable to do so for the purposes of providing efficient and effective ticketing services.

An Opal Card that has been cancelled will no longer be usable. You may make application for a refund of the balance of a cancelled card in accordance with section 48.

54. **Expiration:** An Opal Card will usually expire 9 years after the date it is initialised (which will be earlier than the date you received or first used the Opal Card) (**Planned Expiry**). However, we may expire an Opal Card earlier if we have reasonable grounds to do so (for example, if a particular batch of Opal Cards are experiencing failures prior to their date of Planned Expiry) (**Unplanned Expiry**).
55. **Notice of expiry:** You will know when an Opal Card is about to expire as a card expiration message will appear on the reader display when you tap on an Opal Card Reader during the 30 day period prior to Planned Expiry, or, in the case of Unplanned Expiry, such lesser period as we may reasonably need to determine.
56. **Forfeiture of Opal Card Balance:** If you have a registered Opal Card, you can apply for a transfer or refund of your Opal Card Balance in accordance with section 48 for a period of up to 90 days after the date of cancellation or expiration of the Opal Card. If you do not do so, or you are not entitled to a refund in accordance with the Opal Refund and Balance Transfer Policy, you will forfeit the Opal Card Balance of that cancelled or expired Opal Card to us.
57. **Inability to use:** You will not be able to use any Opal Card that has been cancelled or has expired.

Law enforcement and revenue protection

58. **Revenue protection:** You must co-operate with any officer (including any NSW police officer) authorised by us to monitor fare evasion, protect revenue or enforce compliance (**Authorised Officer**).
59. **Proof of entitlement:** This section 59 does not apply if you are aged 4 to 15 years (inclusive) and using a “Child/ Youth” Opal Card. When travelling using an Opal card that entitles you to concessional fares or free travel, you must carry and produce upon request evidence of your entitlement to support your eligibility (eg being a valid Senior Card, Pensioner Card or Student Card). If you fail to carry or produce the evidence referred to above, you may be liable to pay a fine. Your eligibility for concessional, discounted or free travel may also be suspended or withdrawn.
60. **Production of Opal Card:** You must immediately produce the Opal Card that you are using if requested to do so by an Authorised Officer. You consent to any Authorised Officer inspecting the Opal Card and viewing transactions on the Opal Card.
61. **Co-operation:** You must co-operate with us and the NSW Police in endeavouring to recover an Opal Card if it is lost or stolen or if we suspect any suspicious activity in relation to an Opal Card.

General

62. **Records:** In the absence of manifest error, our records are conclusive of the matters to which they relate.
63. **Enquiries, complaints and disputes:** You may raise enquiries, complaints or disputes by calling 13 67 25 (13 OPAL) or completing and sending us the enquiry form available on the Opal Website.

64. **Customer instructions:** Whenever you provide information or an instruction in connection with an Opal Card or the Opal Ticketing System to us, we are entitled to assume that you have the right and authority to provide that information or instruction to us and that we are entitled to rely on the information or instruction.
65. **Intellectual property rights:** The Opal Card, the Opal Ticketing System (including related software, architecture, data or other information) and their operation are protected by copyright and other intellectual property rights that are owned by us and our licensors.
66. **Assignment:** If we assign our functions under the Opal Ticketing System or cease to be responsible for the operation of the Opal Ticketing System, the reference to “TfNSW”, “we”, “us” and “our” in these Opal Terms of Use will refer to our assignee or the entity that has taken over the responsibility, as the case may be.

Interpretation

67. **Proper law:** These Opal Terms of Use are governed by the laws of New South Wales and we and you submit to the exclusive jurisdiction of the courts of New South Wales.
68. **Unenforceability:** If any part of these Opal Terms of Use is held to be unenforceable, the unenforceable part is to be given effect to the fullest extent possible and the remainder will remain in full force and effect.
69. **Including:** The words “including”, “such as”, “for example” and similar expressions are not intended as terms of limitation.

Liability

70. **Delays:** To the maximum extent permitted by law, we are not responsible for any delays in performing any of our obligations under these Opal Terms of Use and any of our functions under the Opal Ticketing System. To the maximum extent permitted by law, we will not be liable for any loss, damage, costs or expenses incurred as a result of the failure or delay in processing any transaction including a refund, balance transfer, balance adjustment or transaction to add value.
71. **Exclusion of representations and warranties:** All express or implied guarantees, warranties, representations or other terms and conditions not contained in these Opal Terms of Use are excluded from these Opal Terms of Use to the maximum extent permitted by law.
72. **Lawful remedies:** Nothing in these Opal Terms of Use excludes anything imposed by any legislation (such as the Australian Consumer Law which contains guarantees that protect the purchasers of goods and services in certain circumstances) that cannot be lawfully excluded or limited (**Non-Excludable Provision**). If we are able to limit your remedy for a breach of a Non-Excludable Provision, then our liability for such a breach is limited to one or more of the following at our option:
 - a. in the case of goods, the replacement of the goods or the supply of equivalent goods, the repair of the goods, the payment of the cost of replacing the goods or of acquiring equivalent goods; or

- b. in the case of services, the supplying of the services again, or the payment of the cost of having the services supplied again.
73. **Maximum liability:** Subject to our obligations under any Non-Excludable Provision and to the maximum extent permitted by law:
- a. our maximum aggregate liability to you for all claims under these Opal Terms of Use is limited to \$250; and
- b. we are not liable for, and no measure of damages will, under any circumstances, include special, indirect, consequential, incidental or punitive damages or damages for loss of profits, revenue, goodwill or anticipated savings.

The limitations and exclusions under this clause apply regardless of whether the claim or liability arises in contract, tort (including, without limitation, negligence), equity, under statute, based on fundamental breach or breach of a fundamental term or on any other basis, whether or not such claim, liability or damage was foreseeable.

74. **Contribution:** Our liability to you (if any) is reduced to the extent that your acts or omissions (or those of a third party) contribute to or caused the loss or liability.

RURAL FIRES ACT 1997

Local Bush Fire Danger Period Variation

Pursuant to section 82 of the *Rural Fires Act 1997*, as amended, the Commissioner of the NSW Rural Fire Service, following consultation with the local stakeholders, declares the following Local Bush Fire Danger Period Temporary Variation:

Area of Variation:

- Griffith City Council
- Leeton Shire Council
- Murrumbidgee Shire Council
- Narrandera Shire Council

The Local Bush Fire Danger period has been extended for the period 1 October until 30 October 2015.

During this period permits pursuant to section 87 of the *Rural Fires Act 1997* as amended will be required for the lighting of fire for the purposes of land clearance or fire breaks.

Dated: 28 September 2015

ROB ROGERS AFSM
Deputy Commissioner
Executive Director, Operations
Delegate

SURVEYING AND SPATIAL INFORMATION ACT 2002

Registration of Surveyors

Pursuant to the provisions of the *Surveying and Spatial Information Act 2002*, section 10 (1) (a), the undermentioned persons have been Registered as a Land Surveyor in New South Wales under the *Mutual Recognition Act 1992* of the Commonwealth from the dates shown.

Name	Address	Effective Date
HENRY Dean Robert	23 Glen Eagles Grove Busselton WA 6280	16 September 2015

D J MOONEY
President

M C SPITERI
Registrar

SURVEYING AND SPATIAL INFORMATION ACT 2002

Registration of Surveyors

Pursuant to the provisions of the *Surveying and Spatial Information Act 2002*, section 10 (1) (a), the undermentioned persons have been Registered as a Mining Surveyor (Unrestricted) in New South Wales under the *Mutual Recognition Act 1992* of the Commonwealth from the dates shown.

Name	Address	Effective Date
HODGES William John Henry	14 High Street Belmont NSW 2280	22 September 2015

D J MOONEY
President

M C SPITERI
Registrar

SURVEYING AND SPATIAL INFORMATION ACT 2002

Registration of Surveyors

Pursuant to the provisions of the *Surveying and Spatial Information Act 2002*, section 10 (1) (a), the undermentioned persons have been Registered as a Mining Surveyor (Underground Metalliferous and Open Cut) in New South Wales under the *Mutual Recognition Act 1992* of the Commonwealth from the dates shown.

Name	Address	Effective Date
AITKEN Blair Robert	15 James Place Cobar NSW 2838	22 September 2015
COLLINS John Gregory	40 Celestine Place Rosemount QLD 4560	3 September 2015
JAKWA Godknows	4/59 Pangee Street Nyngan NSW 2825	17 September 2015

D J MOONEY
President

M C SPITERI
Registrar

SURVEYING AND SPATIAL INFORMATION ACT 2002

Restoration of Name to the Register of Surveyors

Pursuant to the provisions of the *Surveying and Spatial Information Act 2002*, section 10A (3), the undermentioned Land Surveyors has been restored to the Register of Surveyors.

Name	Date of Original Registration	Removal Date	Restoration Date
COOPER Barry Joseph	13 March 1981	1 September 2011	18 September 2015
CORNISH Peter Warren	23 September 1994	1 September 2015	17 September 2015
DONOVAN Kevin Joseph	3 October 1967	1 September 2015	21 September 2015
ESTEPHAN Jason	29 October 2008	1 September 2015	21 September 2015
GREEN Nathan David	15 October 2009	1 September 2015	18 September 2015
HALL Graham John	18 March 1977	1 September 2015	17 September 2015
HAMMONDS Brian James	23 September 2005	1 September 2015	21 September 2015
HARTZENBERG Pierre Andreas	15 September 1989	1 September 2015	17 September 2015
HORE Darren John	4 November 2003	1 September 2015	14 September 2015
ISHERWOOD Jason Mark	18 October 1999	1 September 2015	14 September 2015
JACKSON David Christopher	25 March 1994	1 September 2015	22 September 2015
KENNEDY Daniel Thomas	19 March 1993	1 September 2015	16 September 2015
KENNEDY Neil Anthony	26 June 2000	1 September 2015	24 September 2015

Name	Date of Original Registration	Removal Date	Restoration Date
KLEVEN John Winston	19 October 1994	1 September 2015	11 September 2015
KOROMPAY Andrew Leslie	4 November 1999	1 September 2015	22 September 2015
LENTON Geoffrey Mark	11 September 1987	1 September 2015	15 September 2015
NORWOOD Neville John	15 March 1963	1 September 2015	21 September 2015
RUMBLE David Charles	29 September 1969	1 September 2015	11 September 2015
SIM Duncan John	8 April 1997	1 September 2015	22 September 2015
STEWART Peter James	28 November 2012	1 September 2015	11 September 2015
VANDERGRAAF Peter William John	23 March 1984	1 September 2015	14 September 2015
WRIGHT Paul David	15 September 1989	1 September 2015	11 September 2015

D J MOONEY
President

M C SPITERI
Registrar

**SURVEYING AND SPATIAL
INFORMATION REGULATION 2006**

Certificate of Meritorious Service

Pursuant to the provisions of clause 83 of the *Surveying and Spatial Information Regulation 2006*, the undermentioned Surveyors has been awarded a Certificate of Meritorious Service, in recognition of long service and contribution to the surveying profession in New South Wales with effect 1 September 2015.

Name	Date of Removal	Date of Registration
BAITCH George	1 September 2015	6 October 1976
DOWDLE Wayne Christopher	1 September 2015	17 September 1973
WHELAN Michael Christopher	1 September 2015	5 October 1965

D J MOONEY
President

M C SPITERI
Registrar

VEXATIOUS PROCEEDINGS ACT 2008

Notification of Orders Concerning Vexatious Litigants

Tosson Mahmoud

On 24 September 2015, Justice Stephan Rothman ordered that:

- (1) Pursuant to s 8 (7) (b) of the *Vexatious Proceedings Act 2008*, Mr Tosson Mahmoud is prohibited from instituting proceedings in New South Wales other than with leave of an appropriate court under that Act;
- (2) Pursuant to s 8 (7) (a) of the *Vexatious Proceedings Act 2008*, any legal proceedings instituted by Mr Tosson Mahmoud in any court or tribunal in New South Wales before the date of this order are hereby stayed.

MOUNT PANORAMA MOTOR RACING ACT 1989

Conduct of Motor Racing and Associated Events

Mount Panorama

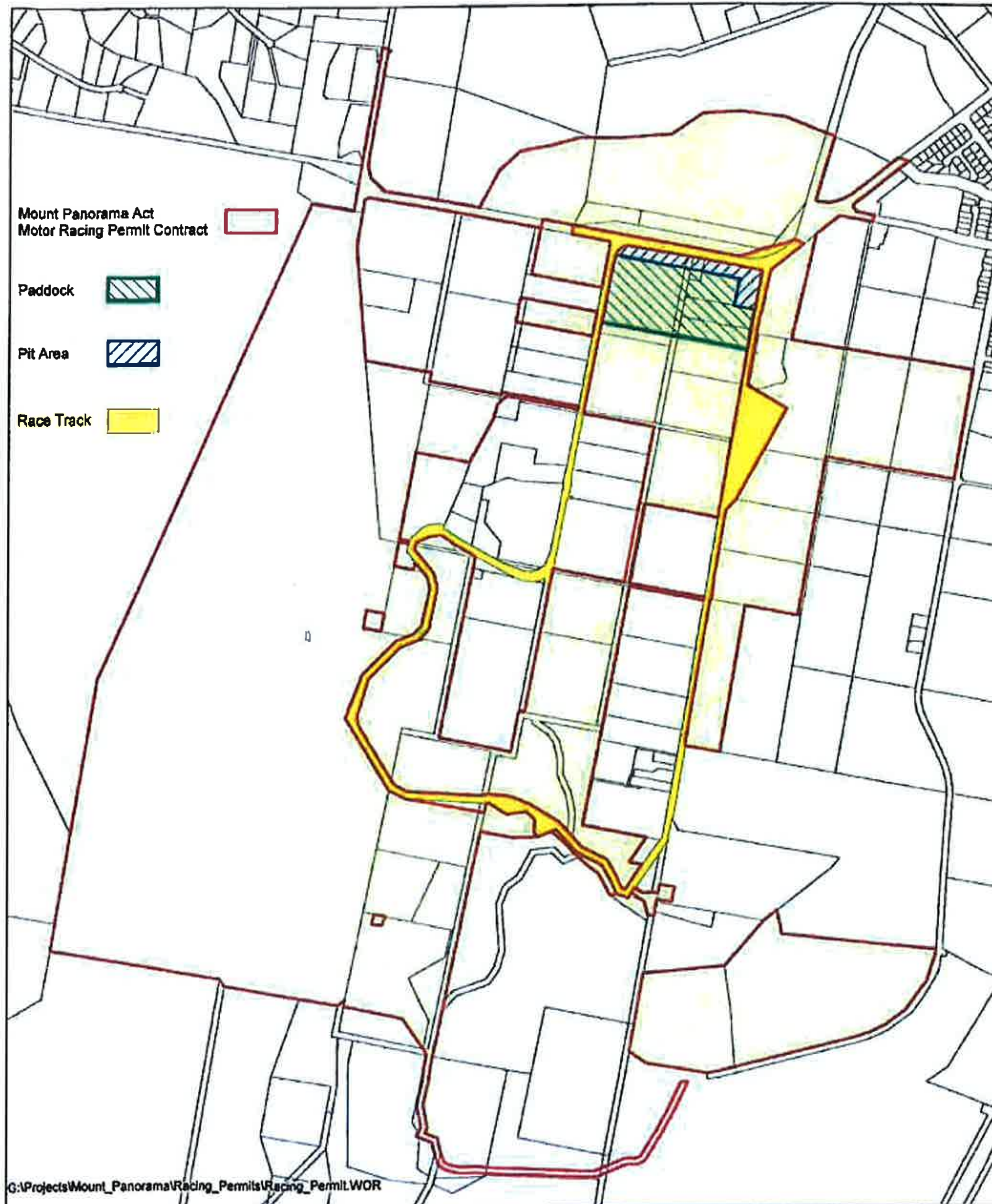
In pursuance of the provisions of section 4 of the *Mount Panorama Motor Racing Act 1989*, I declare that the lands, as shown by hatching on the diagram hereunder, shall constitute the Mount Panorama Circuit for the purpose of motor racing, practice and associated events during the period 8 October to 11 October 2015, both dates inclusive.

STUART AYRES, MP

Minister for Trade, Tourism and Major Events

Minister for Sport

BATHURST REGIONAL COUNCIL Mt Panorama Circuit V8 Supercars October 2015



Bathurst Regional Council expressly disclaims all liability for errors or omissions of any kind whatsoever, or any loss, damage or of consequence which may arise from any person relying on information in this Plan.

Department of Lands

Date 10/10/2012

Note: The colours on this Plan do not indicate zones under the Bathurst Local Environmental Plan 1997.

SURVEY AND DRAFTING DIRECTIONS FOR MINE SURVEYORS 2015 (NSW - MINES)

SURVEY AND DRAFTING
DIRECTIONS
FOR MINE SURVEYORS 2015
(NSW – MINES)

SURVEY AND DRAFTING DIRECTIONS FOR MINE SURVEYORS 2015 (NSW - MINES)

**SURVEY AND DRAFTING
DIRECTIONS
FOR
MINE SURVEYORS
(NSW - MINES)**

Issued by the Surveyor-General by order, pursuant to Clause 4, Surveying and Spatial Information Regulation 2012.

Note: These Directions are for all mines within New South Wales and combine both the NSW Coal and NSW Metalliferous and Extractive Industries Directions.

This Direction replaces the Survey and Drafting Directions for Mine Surveyors (NSW- Coal) gazetted 16th May 2014 and the Survey Drafting Directions for Mining Surveyors NSW Metalliferous and Extractive Industries, gazetted 16th May 2014, issued pursuant to Clause 4 of the Surveying and Spatial Information Regulation 2012

SURVEY AND DRAFTING DIRECTIONS FOR MINE SURVEYORS**Contents**

Contents.....	1
1 GENERAL	1
1.1 Authorisation	1
1.2 Preparation	1
1.3 Compilation.....	1
1.4 Transfer to MGA94	2
1.5 Symbols.....	2
1.6 Nomination of a Mining Surveyor.....	2
1.7 Liability of a Nominated Mining Surveyor	2
2 DEFINITIONS.....	3
3 SURVEY STANDARDS AND PROCEDURES.....	10
3.1 Origin of Co-ordinates.....	10
3.2 Control Surveys and Subsidiary Surveys	11
3.3 Secondary Surveys	11
3.4 Correlation of Surface and Underground Surveys.....	12
3.5 Elevation Surveys	12
3.6 Survey Records and Supply of Survey Information.....	12
3.7 Requirements where workings are to become inaccessible	14
3.8 Surface Movement and Subsidence	14
3.9 Survey of Boreholes	15
3.10 Maintenance of Survey Equipment	15
4 MINE SURVEY PLAN- SOFT COPY	16
4.1 General.....	16
4.2 Seam Working Sheets, Level Working Sheets and Void Sheets.....	16
4.3 Preparation of Mine Survey Plan	17
4.4 Additional Information.....	21
4.5 Endorsement.....	21
4.6 Old Workings/Surveys.....	21
4.7 Administration Sheet	21
4.8 Certification History	21
4.9 Cessation of Duties of a Nominated Mining Surveyor.....	22
4.10 Catalogue Number	22

SURVEY AND DRAFTING DIRECTIONS FOR MINE SURVEYORS 2015 (NSW - MINES)

5	MINE SURVEY PLAN- MINE WORKING SPATIAL INFORMATION	23
5.1	Preparation	23
5.2	Composition	23
5.3	Supply.....	23
5.4	Certification.....	24
6	SUPPLY OF MINE SURVEY PLAN	25
6.1	Period Supply	25
6.2	Exemption	25
6.3	Replacement of Operator	26
7	CLOSING PLAN.....	27
7.1	Suspension of Operations.....	27
7.2	Closure of Operations	27
8	OTHER PLANS	28
8.1	Ventilation Plan (Underground Mines).....	28
8.2	Emplacement Areas	28
8.3	Highwall Mining	28
8.4	Barrier Mining	28
8.5	Shallow depth of cover mining	28
8.6	Mining in outburst control zones.....	28
8.7	Plans Standard – General.....	28
8.8	Declaration.....	28
9	STANDARDS FOR THE PREPARATION OF MINE WORKING DIGITAL THEMES	29
9.1	General.....	29
9.2	Theme Attribute Name and Definitions.....	29
9.3	Theme Attribute Allocation and Feature Type	29
9.4	File Naming Convention.....	30
9.5	Metadata Statements	30
9.6	Administration Sheet	30
9.7	File Format	30
9.8	Date.....	31
9.9	Precision.....	31
9.10	Seam abbreviations.....	31
9.11	Preparation of Additional Themes.....	31
9.12	Preparation of Additional Attributes	31

SURVEY AND DRAFTING DIRECTIONS FOR MINE SURVEYORS 2015 (NSW - MINES)

Table 3.3: Required accuracy for secondary surveys employed to locate mine workings.....	11
Table 4.2: Scales applied to sheets compiled from the Mine Working Spatial Information	16
Table 5.3: Minimum number of digital themes to be supplied, as appropriate to each mining type.....	23
Table 9.2: Theme Attribute Names and Definitions.....	32
Table 9.3: Theme Name allocation and Feature Type.....	41
Table 9.4: File Naming Convention.....	45
Attachment A: Metadata Statement Form	
Attachment B: Administration Sheet Form	

1 GENERAL

1.1 Authorisation

The survey, plan and digital data standards detailed in these Directions are required by the Surveying and Spatial Information Act 2002 No 83 and Clause 4 of the Surveying and Spatial Information Regulation 2012. The Mine Survey Plan is required to be kept in accordance with Part 5 of the Regulation.

1.2 Preparation

These Directions are provided principally for the conduct of surveys and preparation of plans for mines in New South Wales. They provide guidance for preparation and presentation of the Mine Survey Plan. They also provide some guidance to the preparation of other plans based on the Mine Survey Plan information that is required by the Regulation and various Departmental Guidelines. In particular, the preparation of plans required in support of various applications that may be required from time to time for the conduct of mining operations in New South Wales.

1.3 Compilation

- 1.3.1 The Mine Survey Plan consists of sectionalised sheets to represent the required information as a conventional plan, referred to as “soft copy” as well as spatial data, referred to as Mine Working Spatial Information.
- 1.3.2 The Mine Survey Plan shall be sectionalised into sheets as a best fit for individual mines for presentation as a soft copy plan. Each sheet will represent a part or whole of one or more mined seams, mining levels or an area of the void or quarrying operation shown within the Mine Survey Plan. In determining the best fit for the sheet layout the surveyor should be mindful of the need to provide for expansion of the mine and to fit with adjoining mine workings. If in doubt the surveyor should consult with the regulator and with neighbouring mines.
- 1.3.3 The Surveyor-General may request of the Department copies of all or any Mine Survey Plan to be lodged with the Register of Public Surveys in accordance with Section 7 of the Surveying and Spatial Information Act 2002 No 83.
- 1.3.4 Where old workings exist it shall be assumed, for the purpose of marking the Mine Survey Plan, that they constitute a danger until the contrary is proven. In this situation, all plans should be regarded with suspicion until their accuracy has been verified. Reasonable effort should be made to obtain all existing information about old workings and, once obtained, to ensure that they are recorded on the Mine Survey Plan in accordance with these Directions.

1.4 Transfer to MGA94

- 1.4.1 When the Mine Survey Plan is being prepared to comply with these Directions and the workings of any part of the mine were completed prior to 31st March 2000, it shall be acceptable to draw an outline of such workings and to endorse the new sheet(s) to refer to any previously prepared plan held by the Department for detail. The relationship of the origin and height datum of any set of drawings to the current mine grid and datum or to MGA94 and AHD must be established and a notation must appear on the Mine Survey Plan as to the location of any additional information relevant to the Mine Survey Plan including reference to the datum.
- 1.4.2 Workings previously shown as an outline shall be reproduced in full on the Mine Survey Plan if they become active unless otherwise specified in writing by the Chief Inspector.
- 1.4.3 Nothing shall prevent the transfer of mine workings in full to the Mine Survey Plan.
- 1.4.4 It must be noted all Mine Survey Plans shall be submitted on MGA94 and AHD regardless of the "Letter of Datum Reference" used for surveying. The Nominated Mining Surveyor is responsible for any transformations to MGA94 and AHD.

1.5 Symbols

The technical symbols, sign conventions and definitions to be shown on the Mine Survey Plan, and any other plans required by these Directions shall conform to those illustrated in the Australian Standard for Mine Plans – Preparation and Symbols (AS-4368-1996), the Australian Standard for Graphic Representation of Coal Seams and Associated Strata (AS-2916-2007) or other relevant Australian Standards. If a symbol is not provided within the Australian Standards the Nominated Mining Surveyor may create a suitable symbol to be shown in the legend.

1.6 Nomination of a Mining Surveyor

The mine operator must nominate a registered mining surveyor in accordance with the regulation.

1.7 Liability of a Nominated Mining Surveyor

The liability of a Nominated Mining Surveyor in complying with these Directions for a mine shall be limited to the period of time of nomination as the Mining Surveyor for that mine.

2 DEFINITIONS

In these Directions the following words and terms have the meanings indicated:

Adit

Means a horizontal or near horizontal entrance to a mine

Administration Sheet

The administration sheet is an approved form that contains all of the administrative data, signature, and certification for the Mine Survey Plan.

Attribute

A database field attached to a feature object in a theme used to describe spatial data and is also known as “object data”.

Australian Height Datum (AHD)

AHD is the datum surface approximating mean sea level that was adopted by the National Mapping Council of Australia in May 1971.

Bench Marks

Marks established at or in a mine from which the levels (heights) of the mine workings are determined.

Borehole

A borehole includes any hole (whether vertical, horizontal, inclined, or a combination of these), that may affect the safety of the mine, drilled for:

- a) exploration,
- b) gas drainage,
- c) outburst relief,
- d) water drainage
- e) services (e.g. power, water and other services)
- f) auger holes,
- g) for transport of materials including (but not limited to), sand, inflammable materials or fuels, cement, slurry, sewage or water
- h) or any other purpose,

but does not include blast holes or shallow holes that do not intersect another seam, level or area of the mine.

Borehole Plan

A plan or plans in addition to the Mine Survey Plan prepared in accordance with these Directions where density of boreholes affects the clarity of these plans.

Chief Inspector

A government official as defined in Section 18 of the Act.

SURVEY AND DRAFTING DIRECTIONS FOR MINE SURVEYORS 2015 (NSW - MINES)

Closed Mine

Includes an abandoned mine, a discontinued mine (other than a suspended mine) and a former mine.

Control Surveys

Substantially marked surveys forming a closed survey network completed in accordance with ICSM (2007) SP1 (version 1.7).

Department

Has the same meaning as defined in the Act.

Electrical Installation

Has the same meaning as it has in Part 4.7 Work Health and Safety Regulation 2011 (NSW). For the purpose of these Directions mobile plant and equipment is not included.

Emplacement Areas

Has the same meaning as defined in the Regulation.

Endorsement

A notation created, initialled and dated by the certifying Nominated Mining Surveyor, drawing attention to any aspect of a plan or spatial information that is considered necessary or informative that may or may not be a requirement under these Directions or any legislation.

ESRI Geodatabase

A database created through ESRI ArcGIS software containing digital themes and their attribute information, allowing access to large volumes of geographic data. (See Section 9 of these Directions)

Feature Type

Description on how spatial data should be defined, for example, a point, line, or polygon.

First Workings

In relation to a mining operation, includes all work undertaken to establish a mine by driving development openings for an underground mine.

Geocentric Datum of Australia (GDA)

The datum surface approximating the shape of the earth's surface that was adopted by the Inter-Governmental Committee for Surveying and Mapping in May 1990.

Note. The datum surface is described in a notice published by the Surveyor-General in NSW Government Gazette No 88 of 8 August 1997 and designated in that notice as "The Geocentric Datum of Australia (GDA)".

GNSS

Means a Global Navigation Satellite System as per the Surveying and Spatial Information Regulation 2012

SURVEY AND DRAFTING DIRECTIONS FOR MINE SURVEYORS 2015 (NSW - MINES)

Height Datum

All levels shown on the Mine Survey Plan, and all other plans prepared under these Directions, shall be reduced to Australian Height Datum (AHD)

ICSM (2007) SP1 (version 1.7)

The Inter-Governmental Committee on Surveying and Mapping Special Publication 1 "Standards and Practices for Control Surveys".

Inrush Hazard

Has the same meaning as defined in the Regulation.

Level Plan

A compilation of Mine Working Spatial Information and other digital themes that when combined show the mine workings for each level of an underground metalliferous mine, necessary for the Mine Survey Plan.

Level Working Sheet

A sectionalised sheet indicating each level, derived from the Mine Working Spatial Information, formatted for the mapping area of the sheets, that when re-combined cover the total area worked in an underground metalliferous mine.

LPINSW

Means Land and Property Information, New South Wales.

Integrated Survey Grid and Co-ordinate System (ISG)

A system of co-ordinate surveys previously used for the State of New South Wales. This grid is a Transverse Mercator projection of the Australian National Spheroid of 1966.

Map Grid of Australia 1994 (MGA94)

MGA means Map Grid of Australia that is a rectangular co-ordinate system using a Universal Transverse Mercator Projection with zones 6 degrees wide and based on the Geocentric Datum of Australia.

Note: As defined by Clause 5(1) of the Surveying and Spatial Information Regulation 2012.

Metadata

"Information about data" and is used to inform the user of the lineage, accuracy and limitations that may exist within the data. The aim of metadata is to enable the end-user to work with the data with a known level of confidence.

Mine

Has the same meaning as defined in the Act.

Mine Baseline

A permanently marked surveyed line included in the State Survey Control Network.

SURVEY AND DRAFTING DIRECTIONS FOR MINE SURVEYORS 2015 (NSW - MINES)

Mine Holder

Has the same meaning as defined in the Act

Mine Operator

Has the same meaning as defined in the Act.

Mine Survey Plan

Plan required under Part 5 of the Regulation.

Mine Working Digital Themes

Any spatial data that is required to be compiled in the mapping area of the Mine Survey Plan (i.e. Seam Workings Sheets, Level Working Sheets or Void Sheets), that is required to be submitted, as Mine Working Spatial Information under these Directions. Compilation of the digital themes will be in accordance with Section 9 of these Directions.

Mine Working Spatial Information

Digital files containing Mine Survey Plan data in the form of digital themes prepared in accordance with these Directions.

Mining Surveyor

A person registered as a Mining Surveyor under the Surveying and Spatial Information Act 2002 No 83.

Natural Feature

A natural feature includes any feature that may affect the safety of the mine (bank of stream, mean high water mark, edge of cliff etc.).

Natural Feature Plan

A plan or plans in addition to the Mine Survey Plan prepared in accordance with these Directions where the density of the natural features affects the clarity of these plans.

Nominated Mining Surveyor (Mine Surveyor)

A person registered as a Mining Surveyor under the Surveying and Spatial Information Act 2002 No. 83 and nominated under Schedule 10, Statutory Functions of the Regulation as responsible for the conduct of Mining Surveys and the preparation of the Mining Survey Plan.

Open Cut

Means a surface excavation.

Prescribed Dam

Means a dam, or proposed dam, specified or described in Schedule 1 of the Dams Safety Act 1978 No 96.

Raise or rise

Means a development excavated upwards from a level drive or crosscut.

Regulator

Has the same meaning as defined in the Act

Reporting Period

The Reporting Period for the Mine Survey Plan shall be as requested by the regulator.

Seam Working Plans

A compilation of Mine Working Spatial Information and other digital themes that when combined show the mine workings for a seam of an underground coal mine, necessary for the Mine Survey Plan.

Seam Working Sheets

A sectionalised sheet, derived from the Mine Working Spatial Information, formatted for the mapping area sheets, that when re-combined, cover the total area worked in an underground coal mine.

Seam

Any coal bearing stratum or combination thereof mined as a discrete entity. Refer to the Department for correct naming of coal seams.

Secondary Surveys

Are surveys originating from Control Surveys or Subsidiary Surveys utilised by the Nominated Mining Surveyor to accurately locate all of the workings of the mine that are not included in Control Surveys or Subsidiary Surveys.

Shaft

Means a vertical or near vertical entrance to a mine

Soft Copy

Soft Copy means plans prepared to PDF (Portable Document Format) file format.

Statutory Function

As per Schedule 10 of the Regulation

Stope

Means an excavation in a metalliferous mine, other than development workings, made for the purpose of excavating ore

Subsidiary Survey

A survey originating on Control Surveys to develop the workings of a mine or to locate the position of the workings of a mine.

Supervision

When a survey is carried out in accordance with these Directions the Nominated Mining Surveyor must exercise such personal oversight and direction of the work as is necessary to ensure that the Nominated Mining Surveyor has the knowledge to certify all aspects of the survey and that the survey has been carried out in accordance with sound professional practice and these Directions.

Survey Records

For the purpose of these Directions, survey records shall be taken to mean any plan, survey or spatial information required under these Directions and includes field books, level books, co-ordinate books, calculations and any other note books, sheets or plans used for recording relevant survey data, all survey observations, and compilations whether recorded or stored in written, photographic, digital or electronic form.

Surveyor-General

Surveyor-General means the person holding office or acting as the Surveyor-General under Part 4 of the Government Sector Employment Act 2013.

Suspended Mine

Any discontinuance of all work at the mining operation, where the mining is suspended but the operation is kept on a care and maintenance basis.

Tailings Dam

A dammed impoundment of pumped waste material from the processing of extracted material.

Themes

Theme refers to a type of information stored on a single layer of a digital drawing document. Themes are listed in Section 9 Table 9.3.

The Act

Means the Work Health & Safety (Mines) Act 2013

The Regulation

Means the Work Health & Safety (Mines) Regulation 2014

Underground Baseline

A permanently marked survey line established in underground workings from which underground surveys are developed. The Underground Baseline shall be connected by Control Survey to the Mine Baseline.

Ventilation Plan

As required by the Regulation.

Void

The limit of all excavations, ramps and disturbed ground, including insitu blasted material within an open cut mine.

Void Plan

A compilation of Mine Working Spatial Information and other digital themes that when combined show the position of all excavations, ramps, disturbed areas and highwall mining within an open cut mine, necessary for the Mine Survey Plan.

SURVEY AND DRAFTING DIRECTIONS FOR MINE SURVEYORS 2015 (NSW - MINES)

Void Sheets

A sectionalised sheet derived from the Mine Working Spatial Information, formatted for the mapping area of the sheets, that when re-combined, cover the total area worked in an open cut mine.

Winze

Means a development excavated downwards from a drive or crosscut.

Working Section

The seam or part of a seam that is normally mined in an underground coal mine and which may include out of seam strata.

3 SURVEY STANDARDS AND PROCEDURES

3.1 Origin of Co-ordinates

- 3.1.1 A metalliferous or extractive industry underground mine may apply to the Chief Inspector for an exemption to allow for surveying to a local grid and a “Letter of Datum Reference” where the relationship between the local grid and the height datum and MGA94 and AHD can be accurately provided.
- 3.1.2 To allow for a metalliferous or extractive industry underground mine to be surveyed on a local grid and datum a copy of the exemption granted by the Chief Inspector as required in 3.1.1 and a copy of the “Letter of Datum Reference” must be provided to the Department and the information must be updated as necessary.
- 3.1.3 At all mines where a “Letter of Datum Reference” has not been granted all surveys made and carried out in accordance with these Directions shall be calculated and plotted using the Map Grid of Australia (MGA94).
- 3.1.4 All surveys are to originate from the Mine Baseline or may originate from any other mark included in the State Survey Control Network having a standard of accuracy consistent or greater with that of the Mine Baseline.
- 3.1.5 The horizontal survey of the Mine Baseline should be planned and surveyed to Class “B” standards of accuracy as defined in ICSM (2007) SP1 (version 1.7). The geometry of the network should be consistent with this standard of accuracy.
- 3.1.6 Each end of the Mine Baseline should be assigned an AHD Reduced Level surveyed to ICSM (2007) SP1 (version 1.7) Class “LD” spirit levelling or Class “B” from Trigonometric or GPS height measurements.
- 3.1.7 Should the position or co-ordinate values of the Mine Baseline change, this information shall be reported in accordance with Clause 39 of the Surveying and Spatial Information Regulation 2012.
- 3.1.8 The Mine Baseline shall not be less than 250 metres in length.
- 3.1.9 The mark names, numbers and values of the mine baseline should be provided to the Department and be recorded on the Mine Survey Plan.
- 3.1.10 For an existing mine, the current baseline marks should be retained provided they are of a durable nature.

3.2 Control Surveys and Subsidiary Surveys

3.2.1 Accuracy: Each control survey and subsidiary survey must be planned, surveyed and analysed to ensure these surveys satisfy the conditions to achieve a standard of accuracy as prescribed in ICSM (2007) SP1(version 1.7) to achieve Class “D” or better. When calculating compliance to ICSM (2007) SP1 (version 1.7) Class “D” via the formula $r = c (d + 0.2)$ in this Direction specifically defines d as the following:

$d = \text{distance to any station in km, with a minimum value of } 1(\text{km}).$

3.2.2 Marking: Each control survey station and subsidiary survey station shall be adequately referenced and substantially marked. As far as practicable the marks shall be placed in a position least likely to be disturbed.

3.2.3 Where offset survey stations (wall stations) are employed the spigot and prism required to replicate the co-ordinate shall be specified on the Mine Survey Plan.

3.3 Secondary Surveys

Secondary surveys shall be employed by the Nominated Mining Surveyor where necessary to accurately locate all of the mine workings on the Mine Survey Plan to the accuracy nominated in table 3.3.

Table 3.3: Required positional accuracy for secondary surveys employed to locate mine workings.

SECONDARY SURVEYS	
Accuracy	Scale
0.5m	1:500
1m	1:1000
2m	1:2000
2m	1:4000

3.4 Correlation of Surface and Underground Surveys

- 3.4.1 Correlation between surface and underground surveys shall be consistent with a Class "D" survey as prescribed in ICSM (2007) SP1 (version 1.7).
- 3.4.2 In correlation of surface and underground surveys where methods other than direct traverse are employed for azimuth or co-ordinate transfer, the surveys shall be shown on a plan separate from the Mine Survey Plan and shall disclose the special survey methods employed. The plan shall be submitted to the regulator and the Nominated Mining Surveyor shall certify that the survey shown on the plan is accurate and meets the requirements of these Directions.

3.5 Elevation Surveys

- 3.5.1 Order of accuracy of benchmarks:
Such surveys shall be completed to ICSM (2007) SP1 (version 1.7) Class "LD" or Class "D" standards of accuracy.
- 3.5.2 Accuracy of mine workings:
Such surveys shall be completed to ICSM (2007) SP1 (version 1.7) Class "LE" standard of accuracy or to within 0.5 metre. Where vertical measurement is necessary for transference of the value of the surface bench mark to a nominated underground bench mark, the maximum permissible error should not exceed 0.05 metre.

3.6 Survey Records and Supply of Survey Information

- 3.6.1 Systematic and reasonable care shall be taken by the Nominated Mining Surveyor for the safe preservation of all survey records required under these Directions.
- 3.6.2 Survey records for each of the following purposes shall be kept at the survey office for the mine:
 - a) control surveys
 - b) subsidiary surveys
 - c) secondary surveys
 - d) elevation surveys
 - e) surface movement and subsidence surveys
- 3.6.3 Such survey records shall be maintained manually in field book or other stable material, electronic text or image or other means not visually perceptible without the aid of a machine or other device. Where a machine or other device is required to access the stored data the Nominated Mining Surveyor shall ensure the data is regularly updated to a media and format that is currently available.

SURVEY AND DRAFTING DIRECTIONS FOR MINE SURVEYORS 2015 (NSW - MINES)

3.6.4 Survey records are to be permanently recorded and maintained in accordance with ICSM (2007) SP1 (version 1.7) and these Directions.

- a) All survey books shall be maintained in good order and shall have the following description clearly and permanently marked on the cover and inside title page:
 - i) the mine name
 - ii) the catalogue number
 - iii) for underground mines, the seam or level name to which the book refers
 - iv) consecutive index number
- b) The following procedures shall be adopted for entries into survey books:
 - i) all survey observations and measurements shall be recorded at the time of survey;
 - ii) in the event of alteration of a mistake there shall be no erasure. The erroneous entry should be struck through and the correction written above;
 - iii) the datum line of the survey and the azimuth adopted shall be clearly indicated;
 - iv) lengths shall be entered at the time they are measured. Where appropriate, corrections shall be noted and the lengths deduced there from shall be clearly indicated;
 - v) bearings and distance from reference marks must be clearly shown;
 - vi) reference marks and bench marks placed by the surveyor shall be so noted and the positions and descriptions thereof shall be shown by a sketch in the appropriate book;
 - vii) lines remeasured shall be so specified and original distances and bearings shown;
 - viii) the Nominated Mining Surveyor shall sign the field book that the work shown therein was performed by the Nominated Mining Surveyor or under the Nominated Mining Surveyor's supervision and indicate the date on which the work was signed.

SURVEY AND DRAFTING DIRECTIONS FOR MINE SURVEYORS 2015 (NSW - MINES)

- 3.6.5 Where surveys are recorded in electronic form the information to be recorded shall be consistent with that required for survey books (see Section 3.6.4). A complete and separate duplicate of such records shall be preserved on paper or disc or other permanent electronic medium.
- 3.6.6 The Nominated Mining Surveyor of any mine, upon the request of the regulator, shall make available, in a format specified by the regulator all or any survey records or certified copies thereof.
- 3.6.7 Upon suspension of a mine all mine survey records relevant to the preparation of the Mine Survey Plans shall be prepared by the Nominated Mining Surveyor for submission to the Department. A guidance document shall be included detailing file structure, formats, descriptions and other necessary information to enable additional end users to interrogate the information.
- 3.6.8 On closure of the mine these records shall be submitted to the regulator for retention.

3.7 Requirements where workings are to become inaccessible

- 3.7.1 Before any part of the workings of a mine becomes inaccessible, where reasonable, practical and safe to do so, the position of all points of the workings shall be established from a control, subsidiary or secondary survey.
- 3.7.2 Sufficient levels shall be taken to enable contours of the floor of the working section to be calculated and shown on the Mine Survey Plan. (See Section 3.5.2 Elevation Surveys).
- 3.7.3 Where inaccessible workings are not surveyed in accordance with these Directions, the Nominated Mining Surveyor may draw upon any available resources of the mine to best locate the inaccessible workings for the purpose of completion of the Mine Survey Plan with suitable endorsements.

3.8 Surface Movement and Subsidence

- 3.8.1 Where the regulator directs, surveys are to be undertaken to record surface movement, including subsidence induced by mining.
- 3.8.2 Such surveys shall be carried out in accordance with the standards set out in these Directions, or as otherwise directed by the regulator.
- 3.8.3 Such surveys shall be carried out under the supervision of, and certified by, a Registered Mining Surveyor.

Note: All subsidence survey data including field notes is to be kept at the mine in accordance with Section 3.6 (Survey Records and Supply of Survey Information) of these Directions.

3.9 Survey of Boreholes

Boreholes are to be identified by a unique name or number and are to be shown on the Mine Survey Plan. Collar and/or commencement locations of boreholes, are to be established from a control, subsidiary or secondary survey, with both MGA coordinates and AHD levels in accordance with these Directions. The following information will also be recorded, wherever possible, whether from direct survey or other source (i.e. driller's log, geophysical survey):

- (a) total length (or depth);
- (b) inclination (or declination), and
- (c) plan projection (bearing or azimuth) when other than near vertical.

The Nominated Mining Surveyor shall be satisfied that the holes are accurately recorded and represented on the Mine Survey Plan with regard to mine safety.

3.10 Maintenance of Survey Equipment

- 3.10.1 Survey equipment shall be maintained regularly and kept in good adjustment according to the manufactures recommendations.
- 3.10.2 Electronic distance measuring equipment used for Control and Subsidiary Surveys shall be verified in accordance with Surveyor General's Direction No5 "Verification of EDM equipment" at least once each year and immediately after service and repair.
- 3.10.3 GNSS equipment used in mining surveys shall be verified against the Mine Baseline upon acquisition and after any change in software, firmware or hardware.
- 3.10.4 Survey equipment used in borehole surveys for dip and direction shall be maintained regularly and kept in good adjustment according to the manufactures recommendations.

4 MINE SURVEY PLAN- SOFT COPY

4.1 General

4.1.1 Direction

The Mine Survey Plan shall be prepared by or under the direct supervision of the Nominated Mining Surveyor and should be prepared within three months of commencement of the operation or such other time as the regulator may direct by notice in writing served on the operator of the mine.

4.1.2 Updating the Mine Survey Plan

Except where the mine is considered suspended or closed the Mine Survey Plan must be reviewed as directed by the regulator. Sufficient surveys must be undertaken to ensure that the mine workings, voids or stopes are accurately represented on the Mine Survey Plan in accordance with these Directions.

4.1.3 Composition

- a) The Mine Survey Plans are prepared from the Seam Working Sheet, Level Working Sheet or Void Sheet information for a mine and other layout data required under these Directions.
- b) The Mine Survey Plan sheets shall be AO size International Standards Organisation and may be orientated in either portrait or landscape direction. A standard (recommended) layout is available from the Department.

4.2 Seam Working Sheets, Level Working Sheets and Void Sheets

The Seam Working Sheets, Level Working Sheets and Void Sheets shall be compiled from the Mine Working Spatial Information and other digital themes as necessary to truly represent the survey of the mine as required by these Directions.

- a) The Seam Working Sheets shall be at a reduction ratio of 1:4000 with sufficient sheets to cover the extent of the mine workings and necessary adjacent workings. In the case where such a scale limits the clarity, sheets at a reduction ratio of 1:2000 may be used.
- b) The Void Sheets shall be at a reduction ratio of 1:4000 with sufficient sheets to cover the extent of the mine workings and necessary adjacent workings. In the case where such a scale limits the clarity, sheets at a reduction ratio of 1:2000 may be used.
- c) The Level Working Sheets shall be at a reduction ratio of 1:1000 with sufficient sheets to cover the extent of the mine workings and necessary adjacent workings. In the case where such a scale limits the clarity, sheets at a reduction ratio of 1:500 may be used.

Table 4.2: Scales applied to sheets compiled from the Mine Working Spatial Information

MINE SURVEY PLAN	
Sheets	Scale
Seam Working Sheets	1:2000
	1:4000
Level Working Sheets	1:500
	1:1000
Void Sheets	1:2000
	1:4000

SURVEY AND DRAFTING DIRECTIONS FOR MINE SURVEYORS 2015 (NSW - MINES)

The Seam Working Sheets, Level Working Sheets and Void Sheets shall be sized to fit the mapping area of the Mine Survey Plan sheets. The mapping area will be 750 mm x 625 mm with grid lines at maximum 125 mm x 125 mm intervals.

Full lines are to be shown for the Map Grid of Australia. The extremities of each grid line shall be annotated with the grid value. For an existing mine operating to a local grid a second grid comprising tick marks shall display the local coordinate system.

4.3 Preparation of Mine Survey Plan

The Mine Survey Plan must be prepared as required by the Regulation.

4.3.1 Mine Working Digital Themes

4.3.1.1 The workings of the mine, including disused workings and boreholes

- (a) Mine Working Outline – an outline of the mine workings.
- (b) First Workings – Development
- (c) Second Workings or Stopes
- (d) Void Detail Line
- (e) Void Detail Point
- (f) Highwall Mining/ Auger Mining
- (g) Underground Auger Areas
- (h) Mine Underground Access - mine shafts, staple shafts, adits, winze and drifts and all major ventilation devices
- (i) Borehole Locations
- (j) Surveyed Geofeatures - all known outcrops, sub crops, faults, dykes, cinder belts, and other significant dislocations as surveyed.
- (k) Working Section Floor Contours (as calculated from spot heights and working level floor heights shown in blue)
- (l) Void Contour at 5m vertical intervals

4.3.1.2 Any other disused workings that are attached, or in close proximity, to the mine

- (a) Adjacent Mine Workings - an outline of all mine workings in any seam in any direction within 100 metres of the current seam being worked.
- (b) Adjacent Seam Workings - all mine workings (including other mines) in the seam being mined within 100 metres of the current workings.

4.3.1.3 The location of high voltage electrical installations

4.3.1.4 The location of telephones and other fixed plant associated with the radio and telecommunications systems

4.3.1.5 Water dams and tailings dams

4.3.1.6 Natural features surrounding the mine

SURVEY AND DRAFTING DIRECTIONS FOR MINE SURVEYORS 2015 (NSW - MINES)

- 4.3.1.7 Places for the storage of hydrocarbons or explosives
- 4.3.1.8 In the case of an underground mine – points of entry and exit, including emergency exits
- 4.3.1.9 Refuge chambers (in an underground mine)
- 4.3.1.10 Caches, refill stations and change-over stations (in an underground coal mine)
- 4.3.2 Additional themes required under these Directions for the preparation of the mine survey plan.
 - a) Barriers and Restricted Zones
 - b) Boundary Control Marks
 - c) Cadastral Parcels - (State if LPINSW DCDB is used)
 - d) Grid Lines
 - e) Mining Approvals/ Acceptances (extent to be shown in red)
 - f) Mining Lease Boundaries.
 - g) Potential Sources of Inrush (to be shown outlined in green)
 - h) Survey Control Stations including Bench Marks
 - i) Date Lines (dashed) indicating the extent of workings for each survey Reporting Period
- 4.3.3 Mine Survey Plan layout information
 - 4.3.3.1 In the sheet heading area:
 - a) The name of the Mine.
 - b) The Catalogue Number.
 - c) The Parish and County names.
 - d) The name of the Seam/s or Level/s being represented for Underground or the “void” for Open Cut.
 - e) The name of other mine workings known to have been extracted in that sheet area, together with the catalogue number for those workings (see Section 4.10).
 - f) The number of the sheet within the sheet index that make up the operation.
 - 4.3.3.2 In the map surround area:
 - a) The reduction ratio and a graphical (bar) scale together with a statement that all measurements are in metres,
 - b) A north point indicating grid north,
 - c) A schedule of symbols used on the particular sheet,

SURVEY AND DRAFTING DIRECTIONS FOR MINE SURVEYORS 2015 (NSW - MINES)

- d) A sheet index showing:
 - I. All the sheets necessary to cover the mine operation
 - II. The number of each sheet
 - III. An extent of the mining tenure
 - IV. The particular sheet shown by a heavy outline
 - V. Outline of mine workings

- e) For underground coal mines a section of the seam identifying the working section appropriately symbolised, named and the section location identified by coordinates. Additional sections may be shown if the seam thickness or working section varies significantly or the Seam is affected by intrusions, sills or stone bands.

- f) For coal mines a section of the stratum from the surface to the basal seam, appropriately symbolised, seams named and section location identified by coordinates.

- g) A schedule of endorsements made by the Nominated Mining Surveyor.

- h) A schedule of second working, barrier penetration or open cut approvals, Mining Operation Plans (MOP's) accepted by the Department.

- i) A statement or schedule certifying the accuracy of the sheet, including:
 - I. The name of the Nominated Mining Surveyor.
 - II. The certifying surveyor's BOSSI Identification Number.
 - III. The date of Certification.

- j) The origin of levels and the grid bearing and terminal survey stations of the Mine Baseline or survey control marks used for surveys within the sheet.

- k) MGA Zone.

- l) For underground mines, a schedule or schedules of survey marks and Bench Marks containing their identification, coordinates and height.

- m) For underground mines, a schedule of adits, shafts, rises, winzes, drifts, boreholes, staple shafts and bins, with coordinates and heights of the commencing and finishing locations.

- n) A schedule of Boreholes showing coordinates and heights of the collar or starting location together with the general direction, inclination and length.

- o) A schedule listing the bearing and distance and/or coordinates and heights of the natural feature.

4.3.3.3 In the mapping area

The Mine Working Digital Themes and sufficient detail in the form of annotation to identify the characteristics of type, name, dislocation or status should be shown together with the following detail:

- a) For underground coal mines panel names and sufficient heading and cut through numbers (or letters) to identify the numbering system.

SURVEY AND DRAFTING DIRECTIONS FOR MINE SURVEYORS 2015 (NSW - MINES)

- b) The position of all boreholes within that sheet or
 - I. where it is not practical to show all boreholes on the seam, level or void sheets, a separate "Borehole Plan", which shall become part of the Mine Survey Plan, shall be produced as an overlay.
 - II. a reference on the Seam, Level and Void Workings Sheet is required to indicate the existence of any Borehole Plan sheet.
 - III. all boreholes should be identified as to type and name and their current status (e.g. open, sealed or capped).
 - IV. where boreholes are drilled in adjacent strata sufficient reduced levels should be shown to indicate their position.
 - V. any borehole that is removed by the mining process or is in the void is not required to be shown. Remnant stubs of these holes, however, which may present a hazard to future mining operations, must be shown.
- c) For natural features surrounding the mine where it not practical to show all features within the mapping area a separate "Natural Features Plan" shall become part of the Mine Survey Plan and produced as an overlay.
- d) For underground coal mines the datelines corresponding to the position of the workings shall be noted in the format provided by AS4368.
- e) For underground coal mines contour lines of the floor of the working section.
- f) For underground metalliferous mines the working level floor heights (from spot heights).
- g) For open cut mines break lines and contour lines provides levels of the void.

Outline of limits of highwall mining and augering. The maximum extent of this mining in the seam or void is to be shown and identified. Approximate levels into the extremity of highwall mining and augering are to be shown every fifty (50) metres.

- h) Water dams and tailings dams

The position of:

- I. the top water level of any dam containment prescribed under The Dams Safety Act, 1978
 - II. the Notification Area of the prescribed dam as notified under Section 80 of the Mining Act, 1992.
- i) The position of any approved areas, barriers, protective pillars or restrictive zones to be left in the seam pursuant to:
 - I. the provisions of the Regulation,
 - II. any leases in force granted or deemed to have been granted under the Mining Act, 1992

SURVEY AND DRAFTING DIRECTIONS FOR MINE SURVEYORS 2015 (NSW - MINES)

- III. Any approval condition, consent direction or concurrence given in accordance with the provision of the aforesaid Acts or Leases.
- j) Cadastral information in background line type.

4.4 Additional Information

- 4.4.1 Nothing in these Directions shall prevent the inclusion of any additional information on the Mine Survey Plan providing it is shown in a manner consistent with these Directions.
- 4.4.2 The Nominated Mining Surveyor shall show on the Mine Survey Plan any additional information as directed in writing by the regulator.
- 4.4.3 Any additional information discovered by or indicated to the Nominated Mining Surveyor which may present a hazard either to the mine, adjacent mines or persons in those mines should be recorded on the Mine Survey Plan.

4.5 Endorsement

Where any information shown on the Mine Survey Plan is considered to be in doubt or any other information that the Nominated Mining Surveyor considers requires endorsing, the Mine Survey Plan shall be suitably endorsed.

4.6 Old Workings/Surveys

Where old surveys or old workings are converted to GDA 94/MGA94, or the current Local Grid/Datum such conversion shall be suitably endorsed on the Mine Survey Plan.

4.7 Administration Sheet

- 4.7.1 The Soft Copy of the Mine Survey Plan shall be certified by the Nominated Mining Surveyor in the form of the administration sheet identified as Attachment B within this document after the most recent review has been charted.
- 4.7.2 The Nominated Mining Surveyor shall, by including the administration sheet declare for their period of nomination that:
 - (a) the Mine Survey Plan has been prepared in accordance with these Directions, and,
 - (b) the surveys shown on the Mine Survey Plan has been completed to accuracy as prescribed in these Directions.

4.8 Certification History

The Mine Survey Plan shall have recorded in the Certification of Accuracy schedule the details for each previous surveyor nominations.

4.9 Cessation of Duties of a Nominated Mining Surveyor

At the time of cessation of duties, and after Certification has taken place, the Nominated Mining Surveyor shall produce a Soft Copy of the Mine Survey Plan and a copy of the Mine Working Spatial Information on CD-R for retention at the office for the mine and the Nominated Mining Surveyor shall supply the information to the regulator.

The incoming Nominated Mining Surveyor should make a Soft Copy of the Mine Survey Plan for a record of commencement of work.

4.9.1 Charting Cessation of Duties of the Nominated Mining Surveyor

4.9.1.1 Upon permanent cessation of duties of the Nominated Mining Surveyor the Mine Survey Plan shall be charted and dated by the Nominated Mining Surveyor. The Nominated Mining Surveyor shall show the date of the workings at the time of cessation in a similar manner to that of the Mine Survey Plan.

4.9.1.2 The note 'Charted to date of Cessation of duties of the Nominated Mining Surveyor is to be shown in the' Schedule of Accuracy' above the date.

4.9.1.3 The Nominated Mining Surveyor shall by dating the Certification of Accuracy schedule declare for their period of nomination until the date of cessation of duty that:

- a) The Mine Survey Plan has been prepared in accordance with these Directions; and
- b) The surveys shown on the Mine Survey Plan have been completed to an accuracy prescribed in these Directions.

4.10 Catalogue Number

The Department's cataloguing system shall continue for each mine according to a unique number identification system prefixed by the letters 'RT' for coal mines and 'MWP' for metalliferous and extractive industry mines. This unique number is to be clearly identified on the Mine Survey Plan or any copy thereof.

5 MINE SURVEY PLAN- MINE WORKING SPATIAL INFORMATION

This section refers to the preparation, composition and supply of the Mine Working Spatial Information as a digital file.

5.1 Preparation

- 5.1.1 The Mine Working Spatial Information shall be prepared by or under the supervision of the Nominated Mining Surveyor.
- 5.1.2 The Mine Working Digital Themes shall be prepared to the standards required by Section 9 of these Directions.
- 5.1.3 All Mine Working Digital Themes shall be kept at the survey office for the mine.

5.2 Composition

The Mine Working Spatial Information shall be digital files of the Mine Working Digital Themes for the whole of the mine. Digital files are 2D or 3D format as directed in Table 5.3 and they are compatible with the Department's ESRI Geodatabase.

5.3 Supply

For the supply of the Mine Survey Plan, unless otherwise required by these Directions the minimum information in the form of digital themes listed in Table 5.3 are required for each Seam Workings Plan, Level Workings Plan or Void Plan.

Table 5.3: Minimum number of digital themes to be supplied as appropriate to each mining type

MINIMUM THEMES SUPPLIED FOR MINE WORKING SPATIAL INFORMATION				
Theme	Underground		Open Cut	
	2D	3D	2D	3D
Coal				
Mine Working Outline		●		●
First working		●		
Second Workings		●		
Mine Underground Access		●		
Underground Augers		●		
Highwall/Auger Mining		●		●
Mining Lease Boundary	●		●	
Working Section Floor Contours		●		
Void Detail				●
Void Contours				●
Metalliferous and Extractive Industries				
Mine Working Outline		●		●
Void Contours				●
Void Detail				●
Mining Lease Boundary	●		●	

5.4 Certification

The Nominated Mining Surveyor shall, by signing and dating the CD-R containing the copy of the Mine Survey Plan, declare that the Mine Working Digital Themes contained on the CD-R, were used in the preparation of the Mine Survey Plan – Soft Copy for that period.

6 SUPPLY OF MINE SURVEY PLAN

6.1 Period Supply

- 6.1.1 A certified copy of the Mine Survey Plan shall be supplied to the regulator in accordance with the Regulation.

The certified copy of the Mine Survey shall be supplied as digital files on a CD-R (Compact Disc- Read Only).

The files to be included are;

- a) Mine Survey Plan-Soft Copy
- b) Mine Working Digital Themes
- c) Signed Administration Sheet
- d) Metadata Statement

The following information will be recorded on the label of the CD-R:

- a) The name of the Mine Operation
 - b) The catalogue number for the associated Mine Survey Plan
 - c) The name and signature of the Nominated Mining Surveyor
 - d) The certifying Nominated Mining Surveyor's BOSSI Identification Number
 - e) The date of Certification
 - f) Disk Name and Reporting Period
- 6.1.2 The Nominated Mining Surveyor shall archive the current copy as Soft Copy, plot file, or electronic image.

6.2 Exemption

Under the Regulation, the operator of a mine may apply to the regulator for an exemption from the requirement to supply the Mine Survey Plan in accordance with these Directions. In granting exemption the regulator may direct in writing any other requirement for the supply of the Mine Survey Plan.

Note: Exemption from requirements of these Directions must be sought from the Surveyor-General

6.3 Replacement of Operator

When an operator is to cease to operate an operation and is to be replaced by another operator, the outgoing operator must update the Mine Survey Plan and provide the updated plan to the mine holder.

Note: Part 1 of the Regulation sets out this requirement

7 CLOSING PLAN

7.1 Suspension of Operations

Where a mine has not been worked for a period of 2 months the Mine Survey Plan shall be charted and sent to the regulator in accordance with the Regulation.

7.1.1 Charting for Suspension of Operations

Procedures to be followed in the case of the suspension of a mine:

- 7.1.1.1 The Mine Survey Plan shall be charted and dated by the Nominated Mining Surveyor to the date of suspension. The Nominated Mining Surveyor shall place a broken line around the extent of the workings, which shall be dated and initialled.
- 7.1.1.2 The note 'Charted to date of Suspension of Operations' is to be shown in the 'Schedule of Certification of Accuracy' above the date and the name of Nominated Mining Surveyor.

7.2 Closure of Operations

Where a mine is to close, the Mine Survey Plan shall be charted and sent to the regulator in accordance with the Regulation.

7.2.1 Charting for Closure

Procedures to be followed in the case of the closure of a mine:

- 7.2.1.1 The Mine Survey Plan shall be charted, dated and signed by the Nominated Mining Surveyor to the date of closure. The Nominated Mining Surveyor shall place a broken line around the extent of the workings, which shall be dated and initialled.
- 7.2.1.2 The note 'Charted to date of Closure of Operations' is to be shown in the 'Schedule of Certification of Accuracy' above the date and the Nominated Mining Surveyor's signature.

8 OTHER PLANS

Nothing shall prevent the Nominated Mining Surveyor from combining one or more of the following plans provided legibility of the combined plan is retained. All such plans should be prepared generally in accordance with these Directions and should be certified and endorsed, as required, by the Nominated Mining Surveyor or appropriate mine official as described in Section 8.9 (Declaration) of these Directions.

8.1 Ventilation Plan (Underground Mines)

The ventilation plan shall be compiled generally in accordance with these Directions at a scale of not less than 1:5000. The mine operator of an underground mine must ensure a ventilation plan is prepared as per Division 5 Specific control measures-underground mines.

A legend will be shown on the plan depicting symbols used together with a graphical representation of the scale.

8.2 Emplacement Areas

The emplacement area plan shall be a survey certified by the Nominated Mining Surveyor and prepared as per Schedule 3 of the Regulation for all coal mines.

8.3 Highwall Mining

The highwall mining plan shall be a plan of activity certified by the Nominated Mining Surveyor and prepared as per Schedule 3 of the Regulation for all coal mines.

8.4 Barrier Mining

The barrier plan shall be a survey plan certified by the Nominated Mining Surveyor and prepared as per Schedule 3 of the Regulation for all coal mines.

8.5 Shallow depth of cover mining

The shallow depth of cover plan shall be a survey plan certified by the Nominated Mining Surveyor and prepared as per Schedule 3 of the Regulation for underground coal mines.

8.6 Mining in outburst control zones

The mining in outburst control zones plan shall be a survey plan certified by the Nominated Mining Surveyor and prepared as per Schedule 3 of the Regulation for underground coal mines.

8.7 Plans Standard – General

Any plan (including, where appropriate, plans subject to these Directions) required to be drafted by the Nominated Mining Surveyor for purposes of the mine, should be prepared in accordance with the relevant Australian Standard -in particular, but not limited to, AS4368 and AS2916.

8.8 Declaration

A plan referred to in Section 8 (Other Plans Required) of these Directions shall have an appropriate area on the plan allocated for Certification by the Manager of Mining Engineering and/or Nominated Mining Surveyor as appropriate for information on that plan. Such certification shall indicate the origin of the information and that the information shown on the plan is truly represented.

9 STANDARDS FOR THE PREPARATION OF MINE WORKING DIGITAL THEMES

9.1 General

These Directions require that the Mine Survey Plan be prepared using the Mine Working Digital Themes as described in Section 4.3 (Preparation of Mine Survey Plan)

The aim of this Section 9 is to provide standard methods for the construction and preparation of the Mine Working Digital Themes. This section identifies how each theme should be represented graphically and the attribute information that should be included to describe each featured object in the theme.

This section also identifies other supporting information that is required to be submitted to the regulator on the CD-R as provided for in Section 5.2 (Composition) of these Directions.

9.2 Theme Attribute Name and Definitions

- 9.2.1 Table 9.2 Identifies attribute names and definitions that must be used for all Mine Working Digital Themes.

Attribute names are not to exceed ten characters in length. All theme names and attribute names can be in either title case or lowercase, and individual attribute values may be expressed in upper or lower case. Underscores must be used to join multiple words as gaps are not permissible. Attribute names and format must be consistent with those shown in Table 9.2

- 9.2.2 Attribute Values; It is required, where possible, to use standard attribute values. This will allow the Department and other users of the themes to develop standard enquiries through their GIS software. Values for all attributes are required to be attached for all objects in the theme.

All themes are to be prepared using the database format specified in Table 9.2. Numbers with decimal values should be stored as floating number. All other numbers should be stored as integers or characters.

9.3 Theme Attribute Allocation and Feature Type

All objects in a theme must have attributes attached and be of the same feature type (e.g. point, line, or polygon). Each theme required is listed in Table 9.3 with corresponding attributes and feature types that must be used to represent the theme spatially.

In some instances a Mine Workings Digital Theme may need to be represented by more than one theme. For example, Borehole Locations would normally be points for vertical boreholes and lines for horizontal or inclined boreholes. Where multiple shapes are to be used to represent a theme, and a separate theme is created, attribute fields must be consistent with that particular Mine Working Digital Theme

SURVEY AND DRAFTING DIRECTIONS FOR MINE SURVEYORS 2015 (NSW - MINES)

9.3.1 Theme Attribute Categories

Mine Working Digital Themes attributes are divided into three categories. The attribute categories are as follows and the attribute names for each category are identified in Table 9.3.

- a) Core attributes are those attributes that are common to all the themes and include such attributes as mine name, catalogue number, date the theme data was charted to, and the person charting the theme data to the Mine Survey Plan.
- b) Additional attributes are those attributes that are unique to a particular theme or maybe common to several themes. Attributes that are common to several themes may include seam name, type of workings and when the workings were driven or mined.
- c) Metadata attributes are attributes that are required to be attached to the themes only when they are written to the CD-R for submission to the regulator in accordance with these Directions. These attributes include the theme name, the identifying name of the CD-R from which the theme originates, the file name of the theme on the CD-R, the date on which the CD-R was provided to the regulator and the name of the Nominated Mining Surveyor providing the CD-R

9.4 File Naming Convention

Table 9.4 identifies the specific filename that must be used for each Mine Working Digital Theme that is to be written to the CD-R for submission to the regulator in accordance with these Directions.

9.5 Metadata Statements

A metadata statement for the Mine Working Digital Themes must be included and copied onto the CD-R when it is submitted to the regulator in accordance with these Directions. The metadata statement must be in Adobe Acrobat (.pdf) format and in the form identified as Attachment A within this document. Metadata statements must be given a filename indicating mine name, catalogue number and date.

9.6 Administration Sheet

The administration sheet is an approved form that contains all of the administrative data, signature, and certification for the Mine Survey Plan and must be copied onto the CD-R when submitted to the regulator in accordance to these Directions. The administration sheet must be in Adobe Acrobat (.pdf) format and in the form identified as Attachment B within this document. The Administration Sheet must be given a filename indicating mine name, catalogue number and date.

9.7 File Format

All Mine Working Digital Themes that are to be submitted to the regulator in accordance with these Directions must be submitted as shapefiles.

The shapefile format consists of three or more files with the following file extensions

- .shp - The main file that stores the feature geometry; required.
- .shx - The index file that stores the index of the feature geometry; required.
- .dbf - The dBASE table that stores the attribute information of features.
- .sbn and .sbx (optional) - The files that store the spatial index of the features.
- .prj (optional) - The file that stores the coordinate system information.

9.8 Date

Date attributes are to be in database format 'character' and be in the form "dd/mm/yyyy" where date of workings are accurately known, general format "month year" (May 2006) or as a time period (1950-2000 or pre 2000) when the charted period cannot be accurately shown.

9.9 Precision

Spatial themes should be provided in the best available precision.

9.10 Seam abbreviations

The Department maintains a list of official seam name abbreviations. Dataset seam names must be consistent with this list.

9.11 Preparation of Additional Themes

In the event that additional themes are to be submitted with those required by these Directions the attributes, the attribute names and formats should be consistent with this Section 9 of the Directions.

9.12 Preparation of Additional Attributes

In the event that additional attributes are required for a theme, the attributes and their formats should be developed consistent with this Section 9 of the Directions.

Nominated Mining Surveyors are encouraged to create additional attributes that will assist in the preparation and supply of the Soft Copy and in support of safe mining operations.

Table 9.2 Theme Attribute Names and Definitions

NSW MINES							
Attribute Name	Description	Database Format	Max Length	Input Value	Example	Options List	
Accuracy	Class of survey	Character	50	Chartor determined			
Adj_RT_No	Catalogue Number for the adjacent mine relating to the feature	Character	10	NSW Department of Industry, Resources & Energy Division determined	RT76		
Adjustment	reference to adjustment file	Character	20	Chartor determined			
App_date	Date of approval or acceptance	Character	10	Chartor determined			
App_id	Name of approval	Character	30	Chartor determined			
App_type	Type of approval	Character	30	Chartor determined			
Azimuth	Not used if borehole is vertical	Character	20	Chartor determined			
Barr_date	Date the barrier originated	Character	10	Chartor determined	23/05/1974		
Barr_type	Type of barrier	Character	100	Chartor determined	Colliery holding		
Bdy_name	Name of the coal operation boundary	Character	50	Chartor determined			
Bdy_type	Type of boundary	Character	50	Chartor determined			

NSW MINES							
Attribute Name	Description	Database Format	Max Length	Input Value	Example	Options List	
Bhole_diam	Borehole diameter in millimetres	Character	10	Chartor determined			
Bhole_name	Name of borehole	Character	20	Chartor determined			
Cable_type	Type of high voltage cable	Character	20	Chartor determined			
Cat_No	Catalogue Number for NSW mines	Character	15	NSW Department of Industry, Resources & Energy Division determined	RT123 MWP11		
Caution	Warning on use of theme	Character	254	Compulsory and must be in the form described in the options list and included in the Metadata Statement			This theme should not be read in isolation. It is one of many themes that comprise the Mine Survey Plan. The MSP held by the regulator is the true record of the mine workings.
Chart_date	Date the feature was inserted into the theme	Character	10	Chartor determined	30/06/2010		
Chamber_name	Name of the refuge chamber	Character	50	Chartor determined			
Chartor	Surveyor inserting the feature into the theme	Character	50	Chartor determined	Joe Bloggs		
Code_no	AS 4368 code number	Character	20	Chartor determined			

NSW MINES							
Attribute Name	Description	Database Format	Max Length	Input Value	Example	Options List	
Collar_rl	Height of the collar of the borehole (AHD)	Character	20	Chartor determined			
Cont_type	Contour type	Character	30	Select from Options List		Seam floor, Void floor	
County_id	Name of county	Character	50	Chartor determined			
Comm_type	Type of communication device	Character	100	Chartor determined	Radio		
Dam_name	Name of prescribed dam	Character	100	Chartor determined			
Date_work	Date workings were driven or extracted	Character	50	Chartor determined	30/11/2005 MAR2005 Pre 2000		
Dept_file	Department file number	Character	20	Chartor determined			
Depth	Total depth or length of the borehole (metres)	Character	10	Chartor determined			
Descript	Description of feature and/or theme.	Character	100	Chartor determined			
Dip	Overall dip of the feature	Character	10	Chartor determined			
Direction	Direction expressed as a bearing and in decimal degrees	Character	20	Chartor determined			

NSW MINES							
Attribute Name	Description	Database Format	Max Length	Input Value	Example	Options List	
Disk_name	CD-R identifier	Character	50	Provider determined	RT371_0909 MWP11_0909		
Displace	Displacement of Fault (metres) and direction of Down Throw (degrees)	Character	20	Chartor determined			
Easting	Easting in MGA 94	Floating Integer	10.3	Chartor determined			
Emplc_id	Emplacement area name	Character	50	Chartor determined			
Emplc_type	Emplacement area type	Character	50	Chartor determined			
End_date	End date of approval – if applicable	Character	10	Chartor determined			
Endorse	Feature status	Character	254	Chartor determined			
E_station	Name of emergency station	Character	50	Chartor determined	Cache, refill, change-over		
Entry_dim	Diameter or width by height of entry (metres)	Character	20	Chartor determined			
Entry_name	Name of entry	Character	50	Chartor determined			
Entry_type	Type of entry	Character	50	Select from Options List		Drift portal, Shaft, Tunnel, Ventilation shaft – Upcast, Ventilation Shaft - Downcast, Adit, other	

NSW MINES							
Attribute Name	Description	Database Format	Max Length	Input Value	Example	Options List	
Exit_type	Type of exit	Character	50	Select from Options List		Drift portal, Shaft, Tunnel, Ventilation shaft – Upcast, Ventilation Shaft - Downcast, Adit, other	
Feat_type	Type of geological feature	Character	50	Chartor determined			
Field_note	Reference to Field Book	Character	50	Chartor determined			
File_date	CD-R date	Character	10	Provider determined	30/06/2010		
File_name	Theme file name	Character	50	Provider determined			
Finish_rl	Height of the finish of the borehole (AHD)	Character	20	Chartor determined			
Grid_value	Easting or northing value of the grid line	Character	20	Chartor determined			
Hazard_type	Type of hazardous material	Character	100	Chartor determined	hydrocarbon		
Height	Height (AHD)	Character	20	Chartor determined	123.123		
Initials	Surveyor's initials	Character	10	Chartor determined			
Inrush_id	Name to identify inrush control zone	Character	100	Chartor determined			
Inrush_type	Inrush risk type	Character	100	Chartor determined			
Land_tag	Cadastre parcel identifier – LPI format	Character	50	Chartor determined			

NSW MINES							
Attribute Name	Description	Database Format	Max Length	Input Value	Example	Options List	
Level_name	Name of underground level name	Character	20	Chartor determined	Level 980		
Mark_id	Boundary corner mark identifier	Character	20	Chartor determined			
Mark_type	Type of boundary corner mark	Character	50	Chartor determined			
Maximum_RL	Minimum RL (AHD) on underground level	Character	50	Chartor determined	120		
Mine_name	Name of the operation relating to the mine survey plan	Character	50	Holder determined Check for mine name duplication at NSW Department of Industry, Resources & Energy Division	Acme Colliery		
Minimum_RL	Maximum RL (AHD) on underground level	Character	50	Chartor determined	100		
MWP_no	Catalogue number for metalliferous and extractive industry operations	Character	15	NSW Department of Industry, Resources & Energy Division determined	MWP11		
Natural_Feature	Name of natural feature	Character	100	Chartor determined	Hunter River		
Northing	Northing in MGA 94	Floating Integer	11.3	Chartor determined			

NSW MINES							
Attribute Name	Description	Database Format	Max Length	Input Value	Example	Options List	
Parish_id	Name of Parish	Character	50	Chartor determined			
Plan_catno	Survey plan catalogue	Character	20	NSW Department of Industry, Resources & Energy Division determined	M27000		
Plant_name	Name of plant	Character	50	Chartor determined			
Plantype	Type of cadastre parcel - LPI format	Integer	10	Select from Options List		Refer to LPMA metadata accompanying DCDB.	
Portion_no	Mining portion	Character	100	NSW Department of Industry, Resources & Energy Division determined	ML20		
Pres_date	Date that dam was prescribed	Character	10	Chartor determined			
Provider	Nominated Mining Surveyor signing the CD-R	Character	50	Provider determined			
RT_No	Catalogue number for coal operations	Character	10	NSW Department of Industry, Resources & Energy Division determined	RT123		
Seam_name	Name of the seam relating to the feature	Character	30	NSW Department of Industry, Resources & Energy Division list	Bayswater		

NSW MINES							
Attribute Name	Description	Database Format	Max Length	Input Value	Example	Options List	
Source	Where the feature was sourced.	Character	50	Select from Options List		Mine survey, Other survey, Digitised, CAD drawn, Calculated, Coordinate entry, Mine records, Department records, Mining lease, Planning Approval, Mining Approval, other	
Station_id	Name of survey station	Character	20	Chartor determined			
Status	Status of Feature	Character	50	Select from Options List		Working, Suspended, Discontinued, Abandoned, Closed, Current, Final, Destroyed, In progress, Temporary, Sealed, Open, Adopted by mine, Adopted by NSW Industry, R&E, Flooded, Indicated, Inferred	
Surv_date	Date of survey	Character	10	Chartor determined			
Theme_name	Mine Working Digital Theme name	Character	50	Provider determined			
Title_name	Mining lease identifier	Character	30	NSW Department of Industry, Resources & Energy Division determined	MLXXXX		
Type	Type of control station	Character	50	Chartor determined			
Voltage	Number of volts	Character	20	Chartor determined	4000		
Width	Width of feature	Character	20	Chartor determined			

NSW MINES							
Attribute Name	Description	Database Format	Max Length	Input Value	Example	Options List	
Work	Type of mine workings	Character	50	Select from Options List	First workings	First workings, Second workings, Workings outline, Void detail, Void outline, Adjacent workings, Adjacent second workings, Surface auger workings, Underground auger workings	
Work_Start	Date when workings first commenced in the horizon	Character	10	Charter determined	30/11/2005		
Work_Finish	Date when workings completed in the horizon	Character	10	Charter determined	30/11/2005		

Table 9.3 Theme Allocation and Feature Type

NSW MINES				
Theme Name	Sub Theme	Feature Type	Attribute Category	
			* Core Attributes	** Metadata Attributes
* Core Attributes are: Mine_name, Cat No, Chart_date, Status, Source, Endorse, Chartor and Descript				
** Metadata Attributes are: Theme_name, Disk_name, File_name, File_date, Caution and Provider				
Any other disused workings that are attached, or in close proximity, to the mine.				
Adjacent Mine Workings	Partial Outline	Line	All	Seam_name, Work
	Full Outline	Polygon		
Adjacent Seam Workings	First Workings	Line	All	Seam_name, Work
	Second Workings	Polygon		Seam_name, Work
The workings of the mine, including disused workings and boreholes.				
Borehole Locations	Vertical Boreholes	Point	All	Seam_name, Easting, Northing, Azimuth, Bhole_date, Bhole_name, Code_no, Collar_rl, Finish_rl, Depth,
	Horizontal/Inclined Boreholes	Line	All	Seam_name, Easting, Northing, Azimuth, Dip, Bhole_date, Bhole_name, Code_no, Collar_rl, Finish_rl, Depth
First Workings		Line	All	Seam_name, Date_Work, Work
Highwall/ Auger Mining		Polygon	All	Seam_name, Date_Work, Work
Mine Underground Access		Polygon	All	Seam_name, Easting, Northing, Azimuth, Dip, Entry_type
Mine Working Outline	Coal			
	Underground			Seam_name, Work
	Open cut	Polygon	All	Seam_name, Work
	Metalliferous			Level Name, Minimum RL, Maximum RL

NSW MINES				
Theme Name	Sub Theme	Feature Type	Attribute Category	
			* Core Attributes	** Metadata Attributes
* Core Attributes are: Mine_name, Cat No, Chart_date, Status, Source, Endorse, Chartor and Descript				
** Metadata Attributes are: Theme_name, Disk_name, File_name, File_date, Caution and Provider				
Second Workings		Polygon	All	Seam_name, Date_Work, Work All
Underground Auger Areas		Polygon	All	Seam_name, Date_work, Work All
Surveyed Geofeatures		Line	All	Seam_name, Azimuth, Feat_id, Feat_type, Code_no, Direction, Displacement, Width All
		Polygon		
Void Contours		Line	All	Height All
Void Detail	Void Line	Line	All	All
	Void Point	Point		
Working Section Floor Contours		Line	All	Seam_name, Height All
Water dams and tailings dams				
Emplacement Areas		Polygon	All	Emplc_id, Emplc_type All
Prescribed Dams		Polygon	All	Dam_name, Pres_date, Bdy_type All
Natural Features surrounding the mine				
Natural Feature		Polygon	All	Natural_Feature All
		Point		
		Line		

NSW MINES					
Theme Name	Sub Theme	Feature Type	Attribute Category		
			* Core Attributes	** Metadata Attributes	
* Core Attributes are: Mine_name, Cat No, Chart_date, Status, Source, Endorse, Chartor and Descript					
** Metadata Attributes are: Theme_name, Disk_name, File_name, File_date, Caution and Provider					
The location of high voltage electrical installations.					
High Voltage Electrical		Polygon	All	Cable_type, Plant_name, voltage	All
		Point			
		Line			
The location of telephones and other fixed plant associated with the radio and telecommunications systems.					
Communication Systems		Polygon	All	Comm_type	All
		Point			
		Line			
Places for the storage of hydrocarbons or explosives					
Hazardous Material		Polygon	All	Hazard_type	All
		Point			
		Line			
In the case of an underground mine – points of entry and exit, including emergency exits					
Entry and Exits		Polygon	All	Entry_type, Exit_type, Easting, Northing	All
		Point			
Refuge chambers (in an underground mine)					
Refuge Chambers		Polygon	All	Chamber_name, Easting, Northing	All
		Point			

NSW MINES					
Theme Name	Sub Theme	Feature Type	Attribute Category		
			* Core Attributes	** Metadata Attributes	
* Core Attributes are: Mine_name, Cat No, Chart_date, Status, Source, Endorse, Chartor and Descript					
** Metadata Attributes are: Theme_name, Disk_name, File_name, File_date, Caution and Provider					
Caches, refill stations and change-over stations (in an underground coal mine)					
Emergency Stations		Polygon	All	E_Station, Easting, Northing	All
		Point			
Additional themes					
Barriers & Restricted Zones		Polygon	All	Seam_name, Department Industry Resources & Energy_file, Barr_type, Barr_Date	All
Boundary Control Marks		Point	All	Easting, Northing, Mark_id, Mark_type	All
Cadastral Parcels		Polygon	All	Land_tag, Plan_type	All
Datelines		Polygon	All	Seam_name, Date_work, Initials	All
Grid Lines		Line	All	Grid_value	All
Mining Approvals		Polygon	All	Seam_name, Department Industry, Resources & Energy_file, App_id, App_type, App_date, End_date	All
Mining Lease Boundaries		Polygon	All	Seam_name, Holding, Portion_no, Title_name, Plan_catno	All
Potential Sources of		Polygon	All	Seam_name, Inrush_id, Inrush_type	All
Survey Control Stations		Point	All	Seam_name, Easting, Northing, Height, Station_id, Type, Field_note, Adjustment, Surv_date	All

Table 9.4 File Naming Convention

NSW MINES		
Theme name	Filename definition	Example
Adjacent Mine Workings	adjmine_ <i>[RT No]</i> _ <i>[Chart_date]</i>	adjmine_rt701_March2006 (outline - adjacent mines in all other seams)
	adjmine_ <i>[MWP No]</i> _ <i>[Chart_date]</i>	adjmine_MWP11_March2006 (outline - adjacent mines in all other levels)
	adjseam1_ <i>[RT No]</i> _ <i>[Chart_date]</i>	adjseam1_rt701_March2006 (1st workings for adjacent mines in same seam as RT701)
	adjseam2_ <i>[RT No]</i> _ <i>[Chart_date]</i>	adjseam2_rt701_March2006 (1st workings for adjacent mines in same seam as RT701)
Adjacent Seam workings	adjlevel1_ <i>[MWP No]</i> _ <i>[Chart_date]</i>	adjlevel1_MWP11_March2006 (1st workings for adjacent mines in same Level as MWP11)
	Adjlevel2_ <i>[MWP No]</i> _ <i>[Chart_date]</i>	Adjlevel2_MWP11_March2006 (1st workings for adjacent mines in same Level as MWP11)
Barriers & Restricted Zones	barrier_ <i>[RT No]</i> _ <i>[Chart_date]</i>	barrier_rt701_March2006
	boreholes_vert_ <i>[RT No]</i> _ <i>[Chart_date]</i>	boreholes_vert_rt701_March2006
Borehole Locations	boreholes_horiz_ <i>[RT No]</i> _ <i>[Chart_date]</i>	boreholes_horiz_rt701_March2006
	boreholes_vert_ <i>[MWP No]</i> _ <i>[Chart_date]</i>	boreholes_vert_MWP11_March2006
	boreholes_horiz_ <i>[MWP No]</i> _ <i>[Chart_date]</i>	boreholes_horiz_rt701_March2006
	bdy_control_ <i>[RT No]</i> _ <i>[Chart_date]</i>	bdy_control_rt701_March2006
Boundary Control Marks	bdy_control_ <i>[MWP No]</i> _ <i>[Chart_date]</i>	bdy_control_MWP11_March2006
	lcl_cadastre_ <i>[RT No]</i> _ <i>[Chart_date]</i>	lcl_cadastre_rt701_March2006
Cadastral Parcels	lcl_cadastre_ <i>[MWP No]</i> _ <i>[Chart_date]</i>	lcl_cadastre_MWP11_March2006
	comm_ <i>[RT No]</i> _ <i>[Chart_date]</i>	comm_rt701_March2006
Communication Systems	comm_ <i>[MWP No]</i> _ <i>[Chart_date]</i>	comm_MWP11_March2006
	dateline_ <i>[RT No]</i> _ <i>[Chart_date]</i>	dateline_rt701_March2006
Date lines	e_stations_ <i>[RT No]</i> _ <i>[Chart_date]</i>	e_stations_rt701_March2006
	e_stations_ <i>[MWP No]</i> _ <i>[Chart_date]</i>	e_stations_MWP11_March2006
Emergency Stations	emplacement_ <i>[RT No]</i> _ <i>[Chart_date]</i>	emplacement_rt701_March2006
	emplacement_ <i>[MWP No]</i> _ <i>[Chart_date]</i>	emplacement_MWP11_March2006
Emplacement Areas	entry_exit_ <i>[RT No]</i> _ <i>[Chart_date]</i>	entry_exit_rt701_March2006

NSW MINES		
Theme name	Filename definition	Example
First Workings	entry_exit_[MWP No]_[Chart_date] work1_[RT No]_[Chart_date]	entry_exit_MWP11_March2006 work1_rt701_March2006
Grid Lines	grid_[MGA zone]_[RT No]_[Chart_date] grid_[MGA zone]_[MWP No]_[Chart_date]	grid_m56_rt701_March2006 grid_m56_MWP11_March2006
Hazardous Material	hazard_[RT No]_[Chart_date] hazard_[MWP No]_[Chart_date]	hazard_rt701_March2006 hazard_MWP11_March2006
Highwall/ Auger Mining	highwall_auger_[RT No]_[Chart_date]	highwall_auger_rt701_March2006
High Voltage Electrical	high_voltage_[RT No]_[Chart_date] high_voltage_[MWP No]_[Chart_date]	high_voltage_rt701_March2006 high_voltage_MWP11_March2006
Mining Approvals	mining_approval_[RT No]_[Chart_date]	mining_approval_rt701_March2006
Mining Lease Boundaries	title_[RT No]_[Chart_date] title_[MWP No]_[Chart_date]	title_rt701_March2006 title_MWP11_March2006
Mine Underground Access	minfra_[RT No]_[Chart_date] minfra_[MWP No]_[Chart_date]	minfra_rt701_March2006 minfra_MWP11_March2006
Mine Working Outline underground	extents_[RT No]_[Chart_date] extents_[MWP No]_[Chart_date]	extents_rt701_March2006 extents_MWP11_March2006
Mine Working Outline open cut	extents_void_[RT No]_[Chart_date] extents_void_[MWP No]_[Chart_date]	extents_void_rt701_March2006 extents_void_MWP11_March2006
Natural Features	nat_feature_[RT No]_[Chart_date] nat_feature_[MWP No]_[Chart_date]	nat_feature_rt701_March2006 nat_feature_MWP11_March2006
Potential Sources of Inrush	pot_inrush_[RT No]_[Chart_date] dam_[RT No]_[Chart_date]	pot_inrush_rt701_March2006 dam_rt701_March2006
Prescribed Dams	dam_[MWP No]_[Chart_date] survey_[RT No]_[Chart_date]	dam_MWP11_March2006 survey_rt701_March2006
Survey Control Stations	survey_[MWP No]_[Chart_date] geology_[RT No]_[Chart_date]	survey_MWP11_March2006 geology_rt701_March2006
Surveyed Geofeatures	geology_[MWP No]_[Chart_date] geology_area_[RT No]_[Chart_date]	geology_MWP11_March2006 geology_area_rt701_March2006

NSW MINES		
Theme name	Filename definition	Example
	geology_area_[MWP No]_[Chart_date]	geology_area_MWP11_March2006
Second Workings	work2_[RT No]_[Chart_date]	work2_rt701_March2006
Underground Auger Areas	ug_auger_[RT No]_[Chart_date]	UG_auger_rt701_March2006
Void Contours	void_cont_[RT No]_[Chart_date]	void_cont_rt701_March2006
	void_cont_[MWP No]_[Chart_date]	void_cont_MWP11_March2006
Void Detail	void_point_[RT No]_Chart_date}	void_point_rt701_March2006
	void_line_[RT No]_[Chart_date]	void_line_rt701_March2006
	void_line_[MWP No]_[Chart_date]	void_line_MWP11_March2006
	void_point_[MWP No]_[Chart_date]	void_point_MWP11_March2006
Working Section Floor Contours	contour_[RT No]_[Chart_date]	contour_rt701_March2006

METADATA STATEMENT

Mine Working Spatial Information

This form is to be completed by the Nominated Mining Surveyor submitting the mine survey plan Soft Copy to the regulator.

It has been prepared in accordance with the requirements of the Survey and Drafting Directions 2015 (NSW Mines), issued by the Surveyor-General by order, pursuant to Clause 4, Surveying and Spatial Information Regulation 2012.

This Metadata Statement must not be altered in any way. It can be either completed electronically using Adobe Reader or printed.

1. Mine Name

Mine Name:	Click here to enter text.
Catalogue Number:	Click here to enter text.

2. Name of Mine Operator

Mine Operator Name:	Click here to enter text.
Postal Address:	Click here to enter text.
Phone (inc. area code):	Click here to enter text.
Fax:	Click here to enter text.
Email:	Click here to enter text.

3. Nominated Mining Surveyor

Name	Click here to enter text.
BOSSI Identification Number:	Click here to enter text.
Telephone number	Click here to enter text.
E-mail Address	Click here to enter text.

4. Key Dates - at least one must be entered

When was the Mine Survey Plan created? [Click here to enter a date.](#)

When it was last updated? [Click here to enter a date.](#)

When is the next due to be updated? [Click here to enter a date.](#)

5. Language

What language is the Metadata in? English

6. Give a brief narrative summary about the content and Mine Survey Plan

[Click here to enter text.](#)

7. Purpose: Defines the specific needs the Mine Survey Plan has been designed to meet.

[Click here to enter text.](#)

8. Metadata Author

Provider	Click here to enter text.
Disk Name	Click here to enter text.
File Date	Click here to enter text.
Metadata Date	Click here to enter text.
Jurisdiction	Choose an item.

9. Extent Information

Projection Name	Map Grid Australia (MGA 94)
Datum	Geocentric Datum of Australia 1994 (GDA 94)
Ellipsoid	Geodetic Reference System 1980 (GRS80)
Units	Metres
Vertical Datum	Australian Height Datum (AHD)

10. Geographic Description

Country	Australia
State	New South Wales
Reference System/Zone	Choose an item.

11. Geographic bounding box

North bounding	Click here to enter text.
East bounding	Click here to enter text.
South bounding	Click here to enter text.
West bounding	Click here to enter text.

12. Security restrictions and use limits

Classification: Choose an item.

Mine Survey Plan Security Use Limits

The themes should not be read in isolation. They are one of many themes that comprise the Mine Survey Plan. The Mine Survey Plan held by the regulator is the true record of the mine workings.

13. Legal Restrictions

Tick any restrictions and legal prerequisites for accessing and using the Mine Survey Plan or the metadata.

Resource Access		Resource Use		Metadata Access		Metadata Use	
<input type="checkbox"/>	copyright	<input type="checkbox"/>	copyright	<input type="checkbox"/>	copyright	<input type="checkbox"/>	copyright
<input type="checkbox"/>	patent	<input type="checkbox"/>	patent	<input type="checkbox"/>	patent	<input type="checkbox"/>	patent
<input type="checkbox"/>	patentPending	<input type="checkbox"/>	patentPending	<input type="checkbox"/>	patentPending	<input type="checkbox"/>	patentPending
<input type="checkbox"/>	trademark	<input type="checkbox"/>	trademark	<input type="checkbox"/>	trademark	<input type="checkbox"/>	trademark
<input type="checkbox"/>	license	<input type="checkbox"/>	license	<input type="checkbox"/>	license	<input type="checkbox"/>	license
<input type="checkbox"/>	intellectualProperty Rights	<input type="checkbox"/>	intellectualProperty Rights	<input type="checkbox"/>	intellectualProperty Rights	<input type="checkbox"/>	intellectualProperty Rights
<input type="checkbox"/>	restricted	<input type="checkbox"/>	restricted	<input type="checkbox"/>	restricted	<input type="checkbox"/>	restricted
<input type="checkbox"/>	otherRestrictions	<input type="checkbox"/>	otherRestrictions	<input type="checkbox"/>	otherRestrictions	<input type="checkbox"/>	otherRestrictions

14. Mine Working Spatial Themes

Select the mine working spatial digital theme, status, data quality and spatial representation type from the drop down list for the themes supplied to the regulator for the composition of the mine survey plan.

Themes	Status		Data Quality			Spatial Representation Type	
	Progress	Maintenance and Update Frequency	Lineage	Accuracy	Completeness	Data Type	Feature Type
Mine Working Digital Themes							
Choose an item.	Choose an item.	Choose an item.	Click here to enter text.	Choose an item.	Click here to enter text.	Choose an item.	Choose an item.
Mine Working Digital Themes-Additional							
Choose an item.	Choose an item.	Choose an item.	Click here to enter text.	Choose an item.	Click here to enter text.	Choose an item.	Choose an item.

ADMINISTRATION SHEET

Mine Survey Plan

This form is to be completed by the Nominated Mining Surveyor submitting the mine survey plan Soft Copy to the regulator.

It has been prepared in accordance with the requirements of the Survey and Drafting Directions 2015 (NSW Mines), issued by the Surveyor-General by order, pursuant to Clause 4, Surveying and Spatial Information Regulation 2012.

This Administration Sheet must not be altered in any way. It can be either completed electronically using Adobe Reader or printed.

1. Mine Survey Plan

Name of mine on the Mine Survey Plan	
Catalogue number:	

2. Origin

Grid System:	
Datum:	
Legislation	
Mining District	
Parish	
County	

3. Name of Mine Operator

Mine Operator Name:	
Postal Address:	
Phone (inc. area code):	
Fax:	
Mobile:	
Email:	

4. Files Included

Files:	
--------	--

5. Nominated Mining Surveyor Signature

Certification

Click within signature box to insert image

I,

Identification number

A surveyor registered under the *Surveying and Spatial Information Act 2002*, certify that:

*(a)

Surveying procedures, accuracy and plan preparation for the period certified, have been carried out pursuant to the standards required by the Survey and Drafting Directions(Mines) 2015 and Surveying and Spatial Information Regulation 2012

*(b)

Mine working digital themes contained on the CD-R were used in the preparation of the mine

Signature:	
-------------------	--

Date:	
--------------	--

6. Reporting Period

Period:	
Disc Name:	

COUNCIL NOTICES

CANTERBURY CITY COUNCIL

LOCAL GOVERNMENT ACT 1993
Section 50

Pursuant to the provisions of section 50 (4) *Local Government Act 1993* the Canterbury City Council gives notice that the land described in the Schedule is vested in the Council.

Schedule

Lot 22 Deposited Plan 20467, Local Government Area Canterbury. Parish St George. County Cumberland.

Lot 23 Deposited Plan 20467, Local Government Area Canterbury. Parish St George. County Cumberland.

Dated 28 September 2015.

J C MONTAGUE, General Manager, Canterbury City Council [8177]

GREAT LAKES COUNCIL

ROADS ACT 1993
Section 162

ROADS REGULATION 2008

Naming of Roads

Notice is hereby given that Great Lakes Council, pursuant to the aforementioned Act and Regulation, has named the roads described hereunder.

GLENN HANDFORD, General Manager, Great Lakes Council, Breese Parade, Forster NSW 2428

Description	Name
The access road located along the Pacific Highway adjacent to the off ramp to Tarean Road, Karuah.	Mill Hill Close, Karuah

[8178]

KEMPSEY SHIRE COUNCIL

ROADS ACT 1993
Section 10

Notice of Dedication of Land as Public Road

Notice is hereby given that the Kempsey Shire Council dedicates the land described in the Schedule below as public road under section 10 of the *Roads Act 1993*.

Schedule

Lot 12 Deposited Plan 1203593 being land situated on the northern side of Darkwater Street between Kinchela Street and the Belmore River at Gladstone.

DAVID RAWLINGS, General Manager [8179]

LAKE MACQUARIE CITY COUNCIL

ROADS ACT 1993

Naming of Roads

Notice is hereby given that Lake Macquarie City Council, pursuant to section 162 of the *Roads Act 1993*, has officially named the road(s) as shown hereunder:

Name	Locality
CASSINIA CRESCENT	West Wallsend

Description

Naming of a private road within Sugar Valley Lifestyle Estate located at 30 Teralba Road West Wallsend being Lot 1 DP 119879.

BRIAN BELL, General Manager, Lake Macquarie City Council, Box 1906, HRMC NSW 2310

GNB Ref: 0087 [8180]

LAKE MACQUARIE CITY COUNCIL

ROADS ACT 1993

Naming of Roads

Notice is hereby given that Lake Macquarie City Council, pursuant to section 162 of the *Roads Act 1993*, has officially named the road(s) as shown hereunder:

Name	Locality
QUINTRAL LANE	Cardiff

Description

Road 7.925 wide & variable width, shown on DP 749984, running westerly off Harrison Street, accessing Aldi and Woolworths.

Name	Locality
HINCKS LANE	Cardiff

Description

Lane 6 wide, shown on DP 731033, running northerly off Thomas Street, between Harrison and Margaret Street.

Name	Locality
SULLIVAN LANE	Belmont

Description

Lane 5.03 wide shown on DP 802647, off Glover Street, opposite Church Street.

Name	Locality
BURMA LANE	Belmont

Description

Road between eastern ends of Deane Street and Stanley Street. Adjoining Lots 62A & 63A DP 17386

PITTWATER COUNCIL

ROADS ACT 1993

Naming of Roads

Notice is hereby given that Pittwater Council, pursuant to section 162 of the *Roads Act 1993*, has officially named the road(s) as shown hereunder:

Name	Locality
SPINEBILL DRIVE	Warriewood

Description

Starting from Boondah Road adjacent to no 16 and proceeding in a south westerly direction to a cul-de-sac.

Name	Locality
MALLARD LANE	Warriewood

Description

Starting halfway along Firetail Drive (see above) and proceeding in a northerly direction before branching west to a cul-de-sac.

Name	Locality
HAKEA DRIVE	Warriewood

Description

Starting from Garden Street, directly opposite no 201 & proceeding in a North-Westerly direction to a turning bay & also including a branching off to the North-East for 60m & then North-West for another 60m to another turning bay.

Name	Locality
GLASSHOUSE CIRCUIT	Warriewood

Description

Private loop road within Anglican Retirement Village at 6-14 Macpherson Street Warriewood

Name	Locality
GAHNIA DRIVE	Warriewood

Description

Starting from Macpherson Street directly opposite the entrance to the Anglican Retirement Village and proceeding in a south westerly direction to a cul-de-sac.

Name	Locality
FIRETAIL DRIVE	Warriewood

Description

Starting from Boondah Road upon a bend opposite the Warriewood Sewage Treatment Plant and proceeding in a westerly direction to a cul-de-sac.

MARK FERGUSON, General Manager, Pittwater Council,
PO Box 882, Mona Vale NSW 1660
GNB Ref: 0084 [8185]

PORT STEPHENS COUNCIL

ROADS ACT 1993

Naming of Roads

Notice is hereby given that Port Stephens Council, pursuant to section 162 of the *Roads Act 1993*, has officially named the road(s) as shown hereunder:

Name	Locality
TUCKEROO CIRCUIT	Fern Bay

Description

Road within new subdivision northerly off the extension of Norfolk Street

WAYNE WALLIS, General Manager, Port Stephens Council,
116 Adelaide Street, Raymond Terrace 2324. Council Ref:
PSC2011-03256
GNB Ref: 0085 [8186]

PORT STEPHENS COUNCIL

ROADS ACT 1993

Naming of Roads

Notice is hereby given that Port Stephens Council, pursuant to section 162 of the *Roads Act 1993*, has officially named the road(s) as shown hereunder:

Name	Locality
WATERVIEW CLOSE	Medowie

Description

New subdivision generally south off Pastures Drive Medowie

Name	Locality
HARVEST ROAD	Medowie

Description

New suburb roads generally south off Pastures Drive Medowie

WAYNE WALLIS, General Manager, Port Stephens Council,
116 Adelaide Street, Raymond Terrace 2324. Council Ref:
PSC2014-00576

GNB Ref: 0083 [8187]

WOLLONGONG CITY COUNCIL
ROADS ACT 1993
LAND ACQUISITION (JUST TERMS
COMPENSATION) ACT 1991
ERRATUM

Notice of Compulsory Acquisition of Land

The notice appearing in the *New South Wales Government Gazette* No 83 of 25 September 2015, folio 8175 by Wollongong City Council purporting to compulsorily acquire land over private land was published in error. This erratum notice revokes that notice.

Dated at Wollongong, this 29th day of September 2015.

DAVID FARMER, General Manager, Wollongong City Council, 41 Burelli Street, Wollongong NSW 2500

[8188]

PRIVATE ADVERTISEMENTS

COMPANY NOTICES

NOTICE OF DISSOLUTION OR RETIREMENT FROM PARTNERSHIP

Notice is hereby given that the partnership previously subsisting between the Estate of the late Margaret Kathleen MOLONEY, Kathleen Mary PENFOLD, Colleen Margaret MOLONEY and Judith Ann FOSTER carrying on business as graziers at Gnoulamein Moree, under the style or firm name of MOLONEY PARTNERSHIP has been dissolved as from the 31 December 2014 so far as concerns the said Estate of the late Margaret Kathleen MOLONEY and the said Kathleen Mary PENFOLD who retire from the said firm and shall no longer be responsible for the debts, liabilities or obligations of the said firm. [8189]

OTHER PRIVATE NOTICES

ESSENTIAL ENERGY

ELECTRICITY SUPPLY ACT 1995

LAND ACQUISITION (JUST TERMS COMPENSATION) ACT 1991

Notice of Compulsory Acquisition of Easement for Electricity Purposes at Wee Jasper

Essential Energy declares, with the approval of His Excellency the Governor, with the advice of the Executive Council, that the Interest in Land described in Schedule 1 to this notice the terms of which is described in Schedule 2 of this notice, is acquired by compulsory process in accordance with the provisions of the *Land Acquisition (Just Terms Compensation) Act 1991*, for the purposes of the *Electricity Supply Act 1995*.

Dated at Port Macquarie this 2nd day of October 2015.

CAROLINE HUNGERFORD, General Manager Customer and Corporate Services, Essential Energy, PO Box 5730, Port Macquarie NSW 2444.

Schedule 1

Interest in Land	Easement for overhead powerlines variable width affecting Lot 1 in DP 582035 and Lot 9 in DP 575513 shown as "(E) Proposed easement for transmission line 20 wide" in DP 1195839.
Locality	Wee Jasper
LGA	Yass Valley
Parish	West Goodradigbee
County	Buccleuch

Schedule 2

The easement for overhead powerlines described in Schedule 1 is on the terms set out in Part A of Memorandum No AG189384 registered on the Register held under the *Real Property Act 1900*. [8190]

ESSENTIAL ENERGY

ELECTRICITY SUPPLY ACT 1995

LAND ACQUISITION (JUST TERMS COMPENSATION) ACT 1991

Notice of Compulsory Acquisition of Land for Electricity Purposes at Bathurst

Essential Energy declares, with the approval of His Excellency the Governor, with the advice of the Executive Council, that the Land described in Schedule 1 to this notice is acquired by compulsory process in accordance with the provisions of the *Land Acquisition (Just Terms Compensation) Act 1991*, for the purposes of the *Electricity Supply Act 1995*.

Dated at Port Macquarie this 2nd day of October 2015.

CAROLINE HUNGERFORD, General Manager Customer & Corporate Services, Essential Energy, PO Box 5730, Port Macquarie NSW 2444

Schedule 1

Land	Locality	LGA	Parish	County
Lot 302 DP 1194865 (part Lot 30 DP 1062485)	Bathurst	Bathurst Regional	Bathurst	Bathurst

[8191]