



Government Gazette

of the State of

New South Wales

Number 26—Roads and Transport

Friday, 22 January 2021

The New South Wales Government Gazette is the permanent public record of official NSW Government notices. It also contains local council, non-government and other notices.

Each notice in the Government Gazette has a unique reference number that appears in parentheses at the end of the notice and can be used as a reference for that notice (for example, (n2019-14)).

The Gazette is compiled by the Parliamentary Counsel's Office and published on the NSW legislation website (www.legislation.nsw.gov.au) under the authority of the NSW Government. The website contains a permanent archive of past Gazettes.

To submit a notice for gazettal, see the Gazette page.

Upper Hunter Shire Council

Roads Act 1993, Section 10

Dedication of Lands as Public Road

NOTICE is hereby given that the Upper Hunter Shire Council, by resolution of the Council dated 28 September 2020 has resolved to dedicate the land described hereunder as public road pursuant to Section 10 of the *Roads Act 1993*.

Kristian Enevoldson, Acting General Manager, Upper Hunter Shire Council, PO Box 208, SCONE NSW 2337.

Dated at Scone this 7th day of January

2020



Acting General Manager

SCHEDULE
Lot 2 DP780741

LAKE MACQUARIE CITY COUNCIL

Roads Act 1993

Notification of Road Closure

Notice is hereby given pursuant to section 38D of the Roads Act 1993, that the roads as set out in the Schedule below are closed. The lands comprised therein cease to be public roads and the rights of passage and access that previously existed in relation to the roads is extinguished. Upon closing, title to the land, comprising the former public roads, will vest in Lake Macquarie City Council, and are classified as operational land for the purposes of the Local Government Act 1993.

Morven Cameron
General Manager
Lake Macquarie City Council
Council Ref: F2015/00466-02

Schedule

Lot 1 DP 1269742

MARINE SAFETY ACT 1998

MARINE NOTICE

Section 12(2)

REGULATION OF VESSELS – EXCLUSION ZONE AND SPECIAL RESTRICTIONS

Location

Wollongong Harbour, including the Belmore Basin – all navigable waters.

Duration

8:30pm to 10:30pm – Tuesday 26 January 2021

Detail

A laser light display will be conducted over the navigable waters of Wollongong Harbour. The display will be staged from a barge, which will be anchored in the harbour at a location approximately 80 metres from the shoreline of Brighton Beach and north-east from the intersection of Harbour Street and Cliff Road.

An **EXCLUSION ZONE** is specified during the event, which will be indicated by the presence of official patrol and control vessels stationed at the entrance to the harbour.

Unauthorised vessels and persons are strictly prohibited from entering the exclusion zone which will be patrolled by both control vessels and official NSW Maritime vessels.

Special Restrictions

Pursuant to section 12(3) of the *Marine Safety Act 1998*, for the duration of the event, special restrictions are imposed on all vessels moored, berthed or anchored within the exclusion zone whilst it is in force. The special restrictions are as follows:

- Vessels that are lawfully moored or berthed within the zone at the commencement time of the event may remain in the zone but must not be operated, and
- Any vessel not lawfully moored or berthed within the zone (e.g. merely anchored) is to be anchored, or temporally moored or berthed, in accordance with the directions of an authorised officer or event official for the duration of the event.

Penalties may apply (section 12(5) – *Marine Safety Act 1998*)

For full details visit the Transport for NSW website – www.rms.nsw.gov.au/maritime

Marine Notice: SO2104

Date: 20 January 2021



Deon Voyer
Manager Operations South
Delegate

MARINE SAFETY ACT 1998

MARINE NOTICE

Section 12(2)

REGULATION OF VESSELS – EXCLUSION ZONES AND SPECIAL RESTRICTIONS

Location

Sydney Harbour – Sydney Cove.

Duration

From 4:00pm Monday 25 January 2021 to 10:30pm Tuesday 26 January 2021

Event

The annual Australia Day celebration on Sydney Harbour, a Special Event conducted by the Department of Premier and Cabinet, will take place at the location during the specified times.

Regulated Area

Due to the potential of the event to affect the safety of navigation, a Regulated Area will be established encompassing all navigable waters bounded by lines drawn between:

- Dawes Point and Milsons Point marked by the western extremity of the Sydney Harbour Bridge
- a line drawn from the port lateral marker north of Bennelong Point to the starboard lateral marker south of Kirribilli Point.

Exclusion Zone

To safeguard the vessels and personnel involved in the event, an Exclusion Zone will be established inside the Regulated Area between **7:00pm and 10:00pm on Tuesday 26 January 2021**.

The Exclusion Zone includes all waters of Sydney Cove and those enclosed by:

- a line drawn from Dawes Point to the orange diamond marking the midpoint of the Sydney Harbour Bridge (Point A)
- a line drawn from the port lateral marker north of Bennelong Point to a point halfway to the starboard lateral marker south of Kirribilli Point (Point B).
- A line connecting Point A and Point B

NO UNAUTHORISED VESSELS OR PERSONS are to enter the Exclusion Zone, which will be patrolled by Transport for NSW (Maritime), NSW Police and other official control vessels.

Penalties may apply (section 12(5) – *Marine Safety Act 1998*)

Special Restrictions

Pursuant to section 12(3) of the *Marine Safety Act 1998*, the following special restrictions apply within the Regulated Area between the following times:

Between 4:00pm and 10:30pm on Monday 25 January 2021:

- Man O War wharf is closed to all vessels except for vessels authorised by Transport for NSW

Between 7:00am and 2:30pm on Tuesday 26 January 2021:

- Passengers must not disembark vessels at Man O War wharf unless the vessel has been authorised by Transport for NSW to offload passengers – This wharf is strictly ‘pickup only’ during the specified times.

Between 2:30pm and 10:30pm on Tuesday 26 January 2021:

- Man O War wharf is closed to all vessels except for vessels authorised by Transport for NSW

Between 6:30pm and 10:00pm on Tuesday 26 January 2021:

- A 6 knot speed limit applies to all vessels operating within the Regulated Area. This restriction does not apply where an approval has been issued by Transport for NSW, or to authorized vessels inside the Exclusion Zone itself.
- Penalties may apply (section 12(5) – *Marine Safety Act 1998*)

In addition, operators of authorised vessels operating within the Exclusion Zone are reminded they must pass at a safe distance from any fireworks barges and tugs.

Maps and Charts Affected

Roads and Maritime Boating Map – 9D and 9G

RAN Hydrographic Chart AUS 200, AUS 201 AUS 202

For full details visit the Transport for NSW website – <https://www.rms.nsw.gov.au/maritime/using-waterways/restrictions-closures/marine-notice/index.html>

Marine Notice SE2101

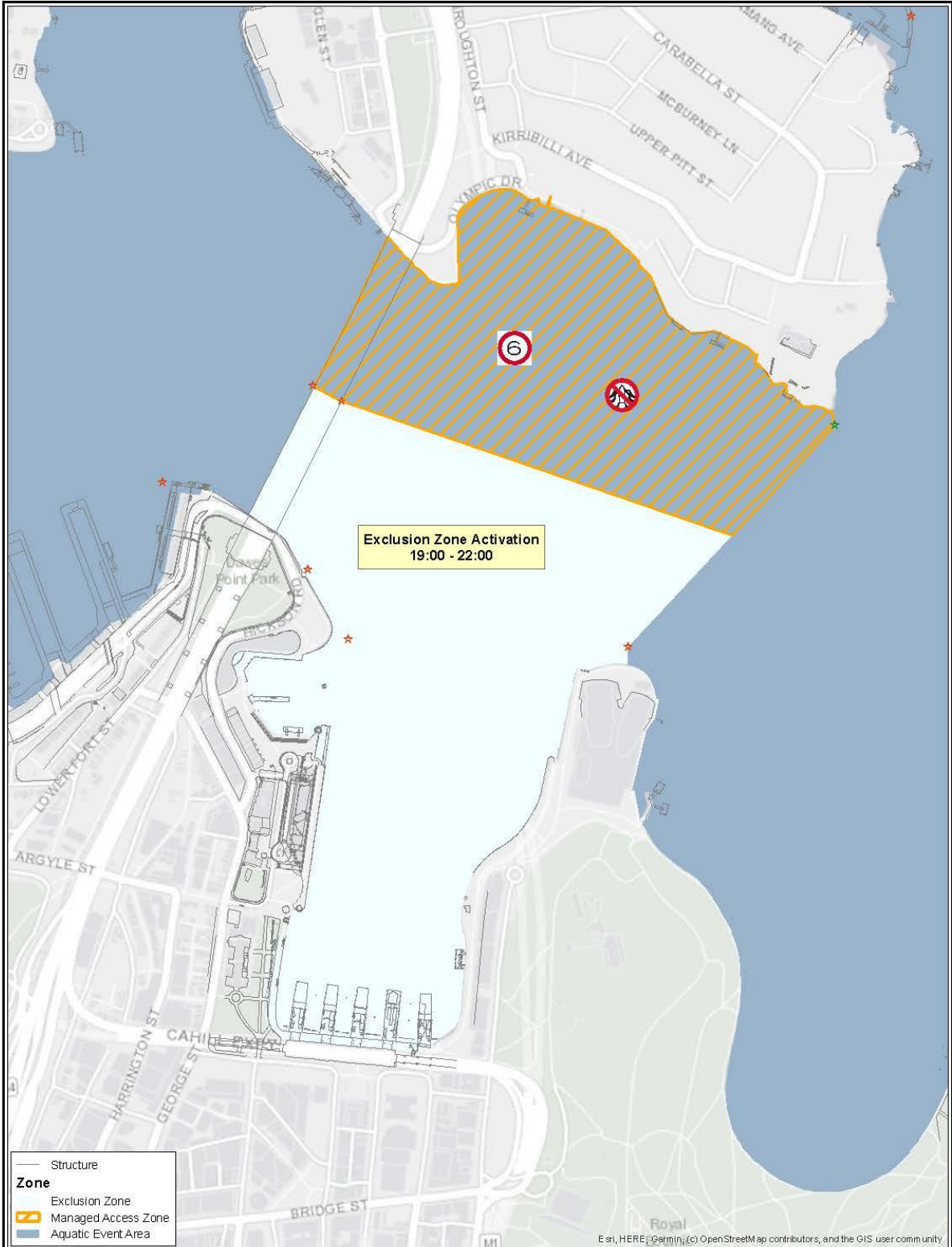
Date: 19 January 2021



Damian Logue

A/Principal Manager Sydney

Delegate

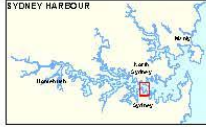


Exclusion Zone Activation
19:00 - 22:00

—		Structure
Zone		
[Hatched Area]		Exclusion Zone
[Orange Outline]		Managed Access Zone
[Blue Area]		Aquatic Event Area

Esri, HERE, Garmin, (c) OpenStreetMap contributors, and the GIS user community

4	DM			Add 6 knot and no wash symbols
3	DM			Add Managed Access Zone
2	DM			Remove Transit Zone
1	DM			Initial map.
Version	Drawn	Approved	Date	Amendment Details



Plan compiled from information which is the
NSW Crown and Spatial Information Unit.
 INFORMATION ON THIS PLAN
 IS SUBJECT TO COPYRIGHT.

NSW Transport
 for NSW

Scale as shown: 1:5,000

CUSTOM PLAN

**Australia Day 2021
 Evening Map**

PLAN N^o: AustDay2021-942-4

Date Printed: 13 January 2021

SP N^o: 2020/942



LISMORE CITY COUNCIL
Roads Act 1993
Notification of Road Closure

In pursuance of section 38D of the Roads Act 1993, the road hereunder described is closed. The lands comprised therein cease to be public road and the rights of passage and access that previously existed in relation to the road are extinguished. Upon closing, title of the land, comprising the former public road, vests in the body specified in the schedule hereunder.

Shelley Oldham
General Manager
Lismore City Council
43 Oliver Avenue, Goonellabah, NSW 2480
Council's reference: CDR19/1260

DESCRIPTION

*Parish - Lismore; County - Rous
Locality - Girards Hill; Local Government Area - Lismore*

Road Closed: Lot 1 in DP 1270079

SCHEDULE

On closing, the land Lot 1 in DP 1270079 will remain vested in Lismore City Council as operational land for the purposes of the Local Government Act 1993.

ROADS ACT 1993

ORDER – SECTION 52A

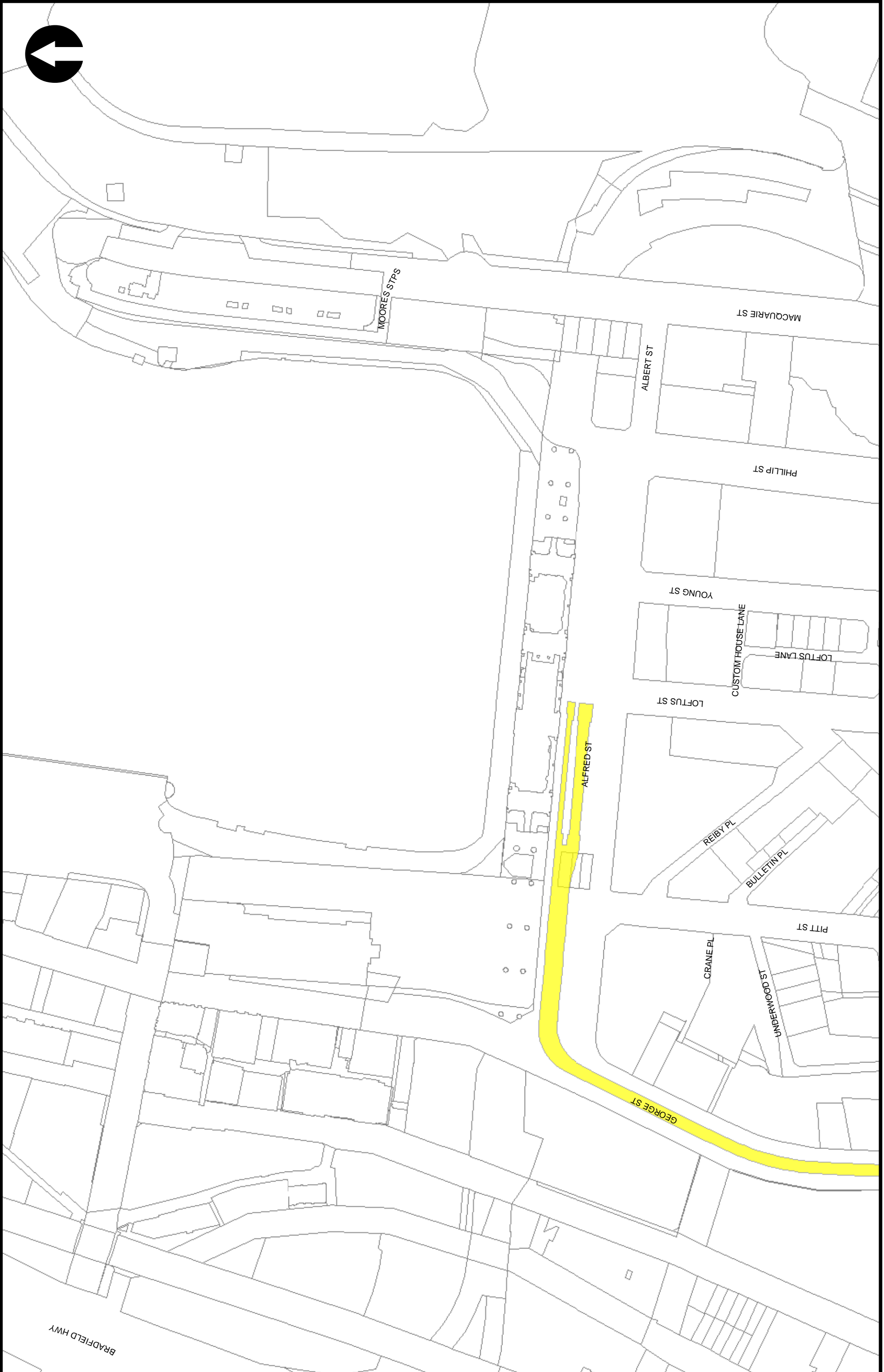
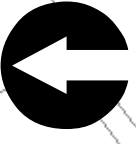
Amendment of the declaration of the Sydney Light Rail Transitway
in the Local Government Areas of the City of Sydney and Randwick City

I, the Minister for Transport and Roads, pursuant to Section 52A of the *Roads Act 1993* and on the recommendation of Transport for NSW, by this Order, amend the Order with respect to the declaration of certain roads as a Transitway, and designated Transitway No 8009 as published on pages 5,370 to 5,386 in NSW Government Gazette No 156 of 29 November 2019, by substituting the roads in the schedule to that Order with those described in the schedule below.

THE HON. ANDREW CONSTANCE MP
MINISTER FOR TRANSPORT AND ROADS

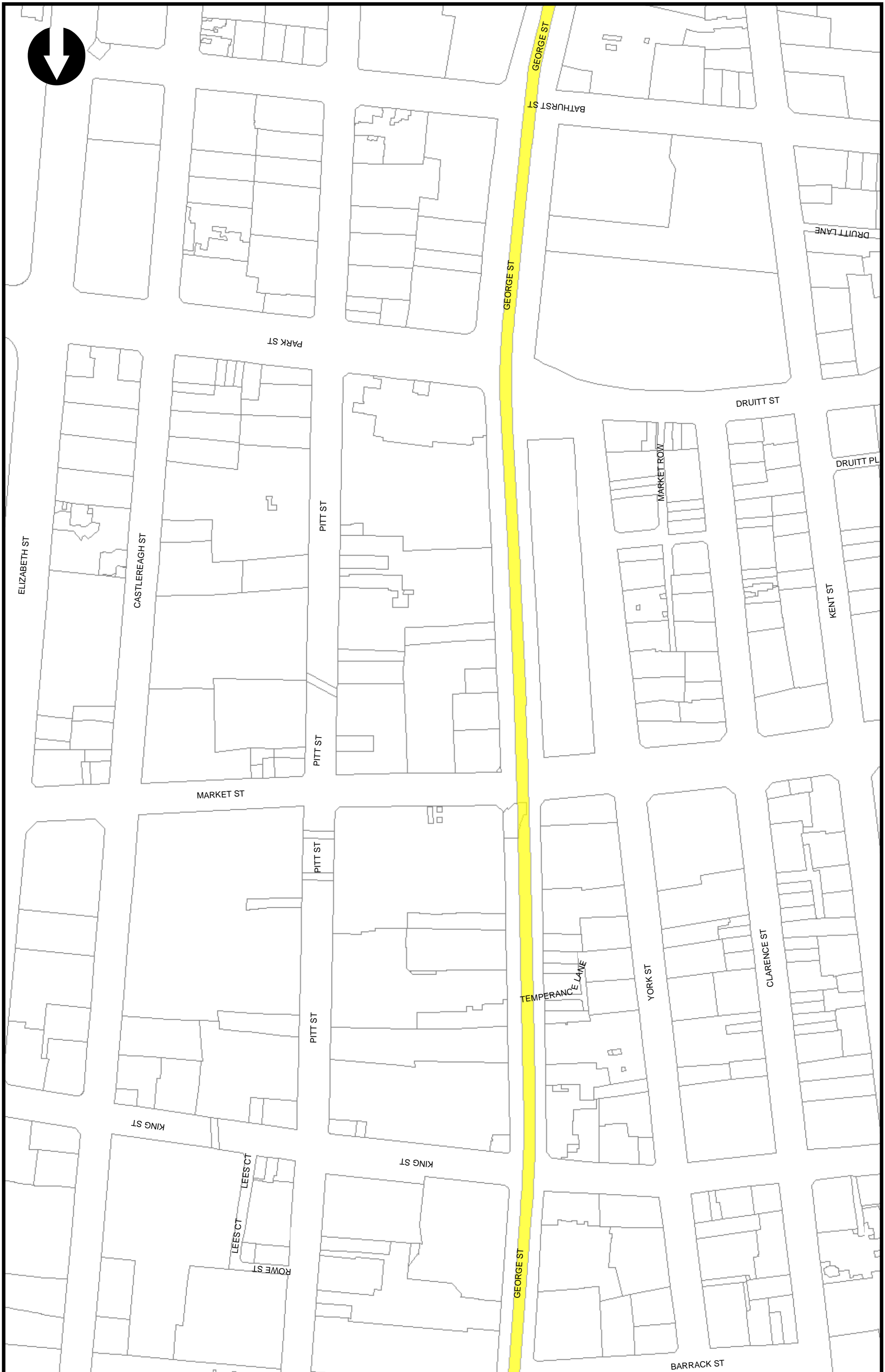
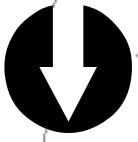
SCHEDULE

CLASS, NAME AND NUMBER	DESCRIPTION
Transitway No 8009	<p>From Circular Quay to Anzac Parade/Dacey Avenue intersection - from Alfred Street at Loftus Street intersection west to George Street, then south on George Street to Rawson Place, then east on Rawson Place and Eddy Avenue to Elizabeth Street, then south on Elizabeth Street into Chalmers Street to Devonshire Street, then east along Devonshire to Bourke Street, across Olivia Lane and Parkham Place to South Dowling Street, across South Dowling Street northbound between Mort Street and Nobbs Street, the Eastern Distributor, and South Dowling Street southbound to the Moore Park tunnel eastern portal, as shown shaded in the attached map.</p> <p>From Ultimo to Haymarket – from Darling Drive at Hay Street east on Hay Street to Castlereagh Street intersection in Haymarket, as shown shaded in the attached map.</p> <p>From Anzac Parade/Dacey Avenue intersection to Randwick - across Darley Road to the south side of Alison Road, from intersection at Alison Road south along Wansey Road through to High Street, then east on High Street to Avoca Street, as shown shaded in the attached map.</p>



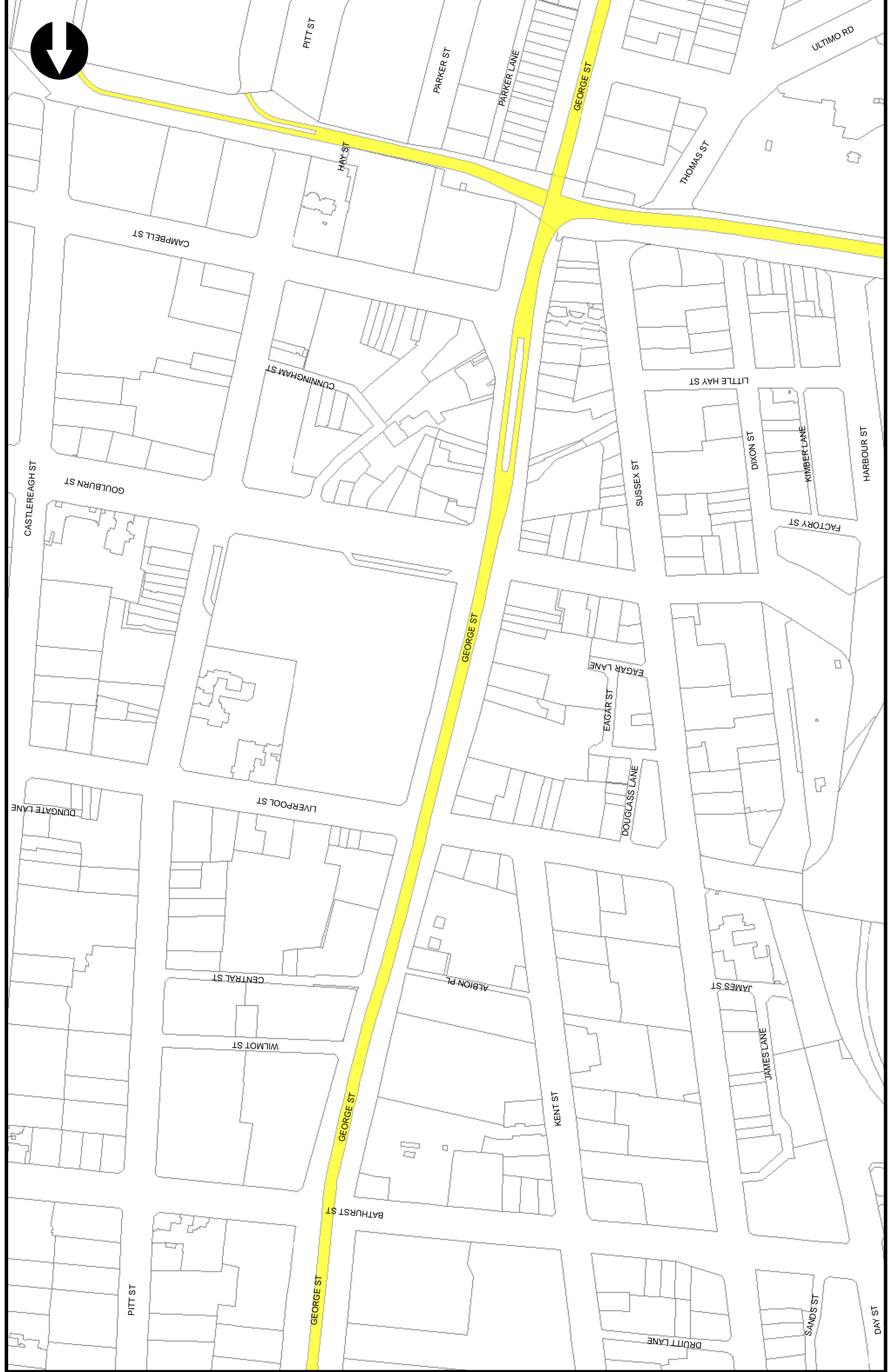
**CBD AND SOUTH EAST LIGHT RAIL PROJECT - TRANSITWAY
INCLUDING INNER WEST LIGHT RAIL ON-ROAD SECTION**

- LEGEND**
- TRANSITWAY
 - CADASTRE



**CBD AND SOUTH EAST LIGHT RAIL PROJECT - TRANSITWAY
INCLUDING INNER WEST LIGHT RAIL ON-ROAD SECTION**

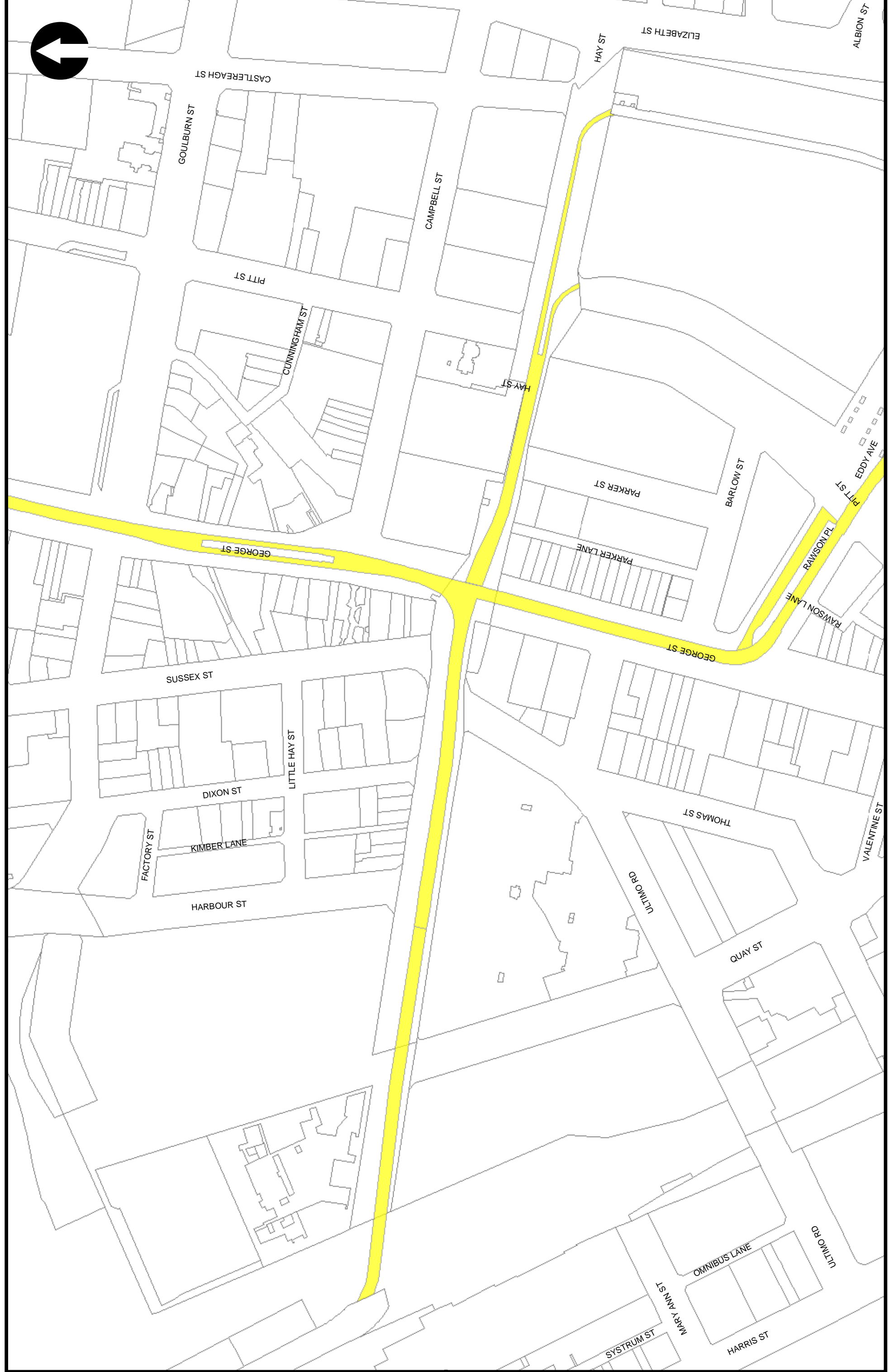
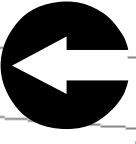
- LEGEND**
- TRANSITWAY
 - CADASTRE



LEGEND

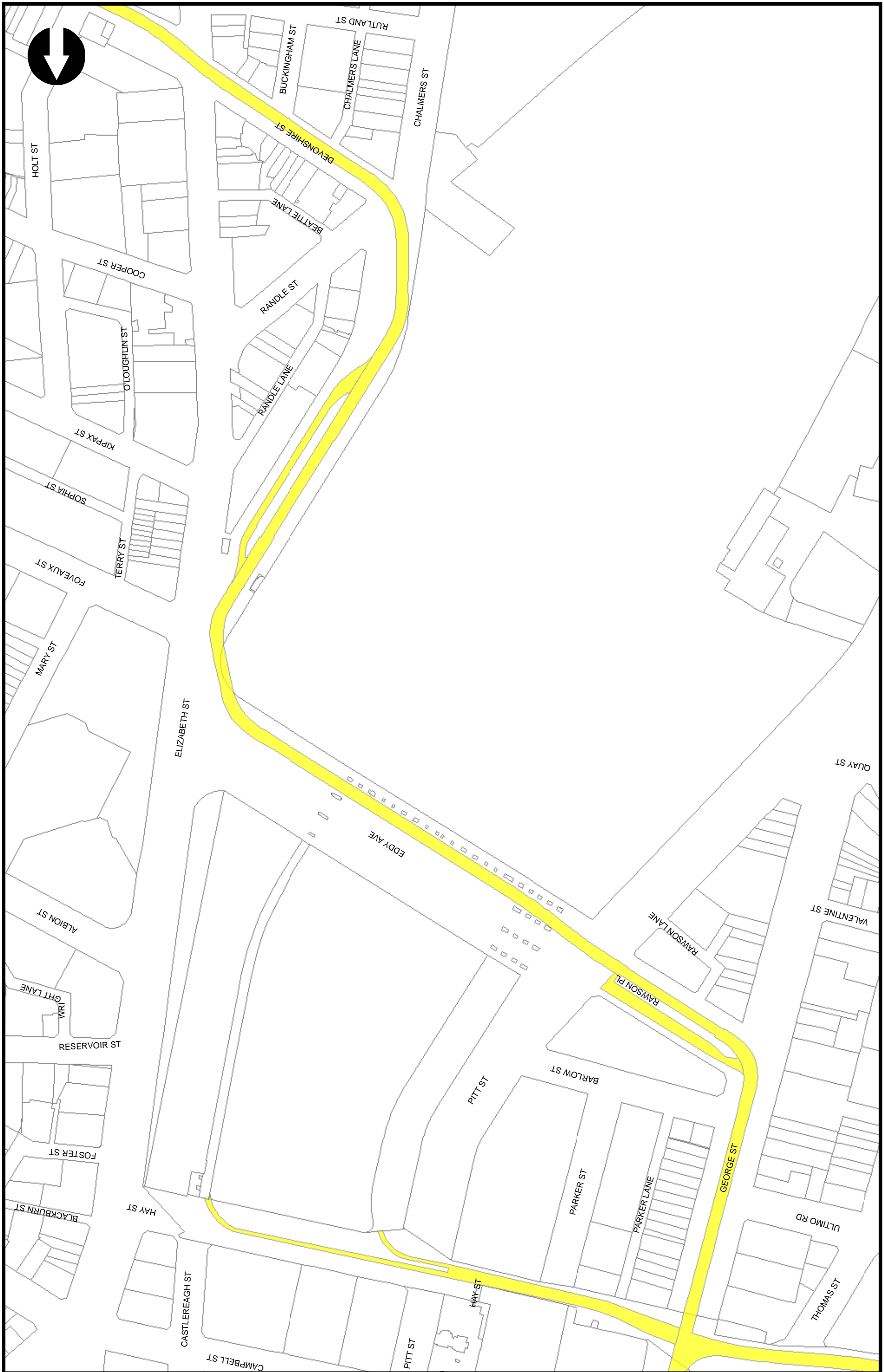
- TRANSITWAY
- CADASTRE

**CBD AND SOUTH EAST LIGHT RAIL PROJECT - TRANSITWAY
INCLUDING INNER WEST LIGHT RAIL ON-ROAD SECTION**



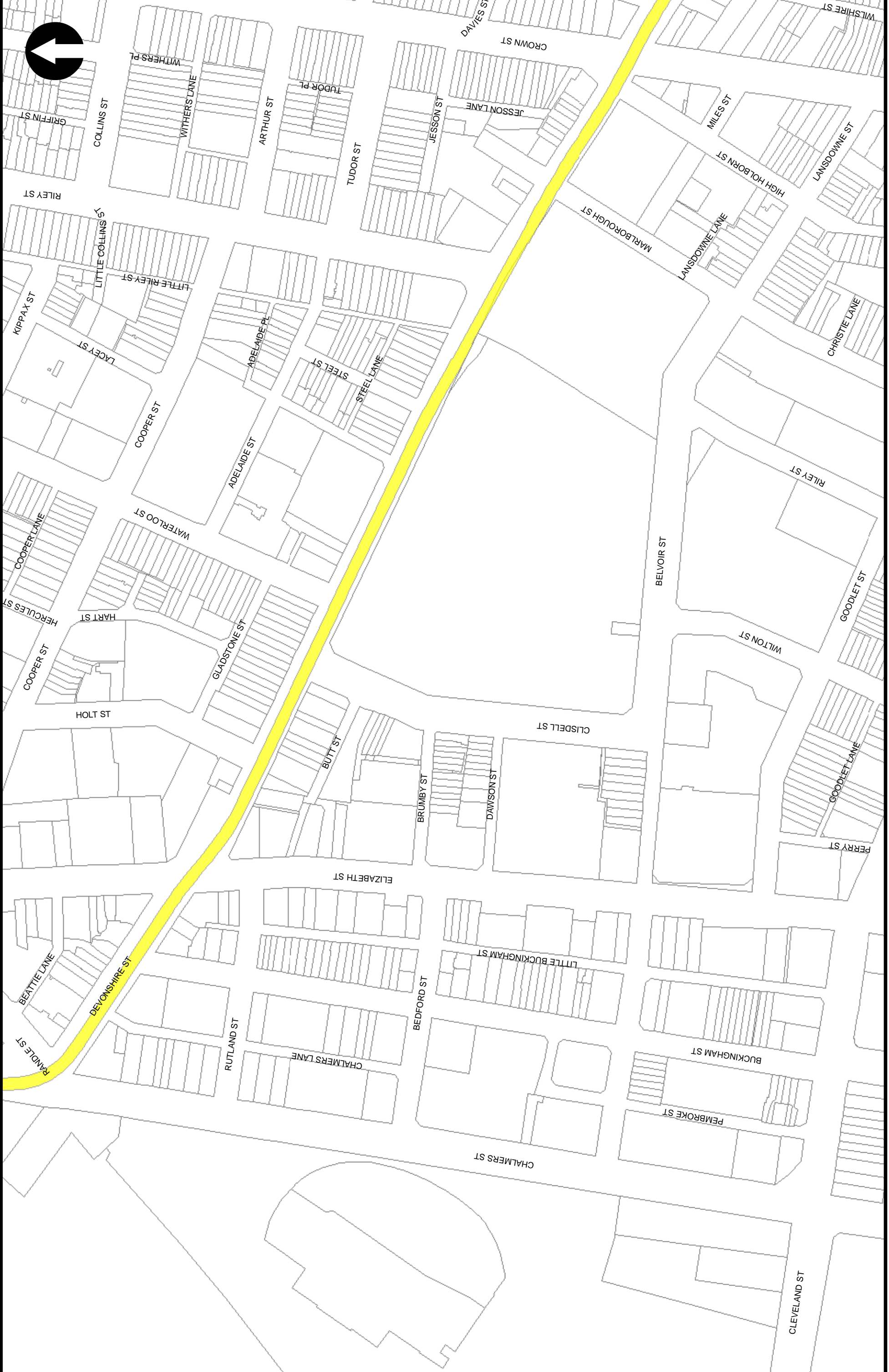
**CBD AND SOUTH EAST LIGHT RAIL PROJECT - TRANSITWAY
INCLUDING INNER WEST LIGHT RAIL ON-ROAD SECTION**

- LEGEND**
- TRANSITWAY
 - CADASTRE



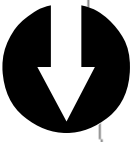
**CBD AND SOUTH EAST LIGHT RAIL PROJECT - TRANSITWAY
INCLUDING INNER WEST LIGHT RAIL ON-ROAD SECTION**

- LEGEND**
- TRANSITWAY
 - CADASTRE



**CBD AND SOUTH EAST LIGHT RAIL PROJECT - TRANSITWAY
INCLUDING INNER WEST LIGHT RAIL ON-ROAD SECTION**

- LEGEND**
- TRANSITWAY
 - CADASTRE



LANG RD

ANZAC PDE

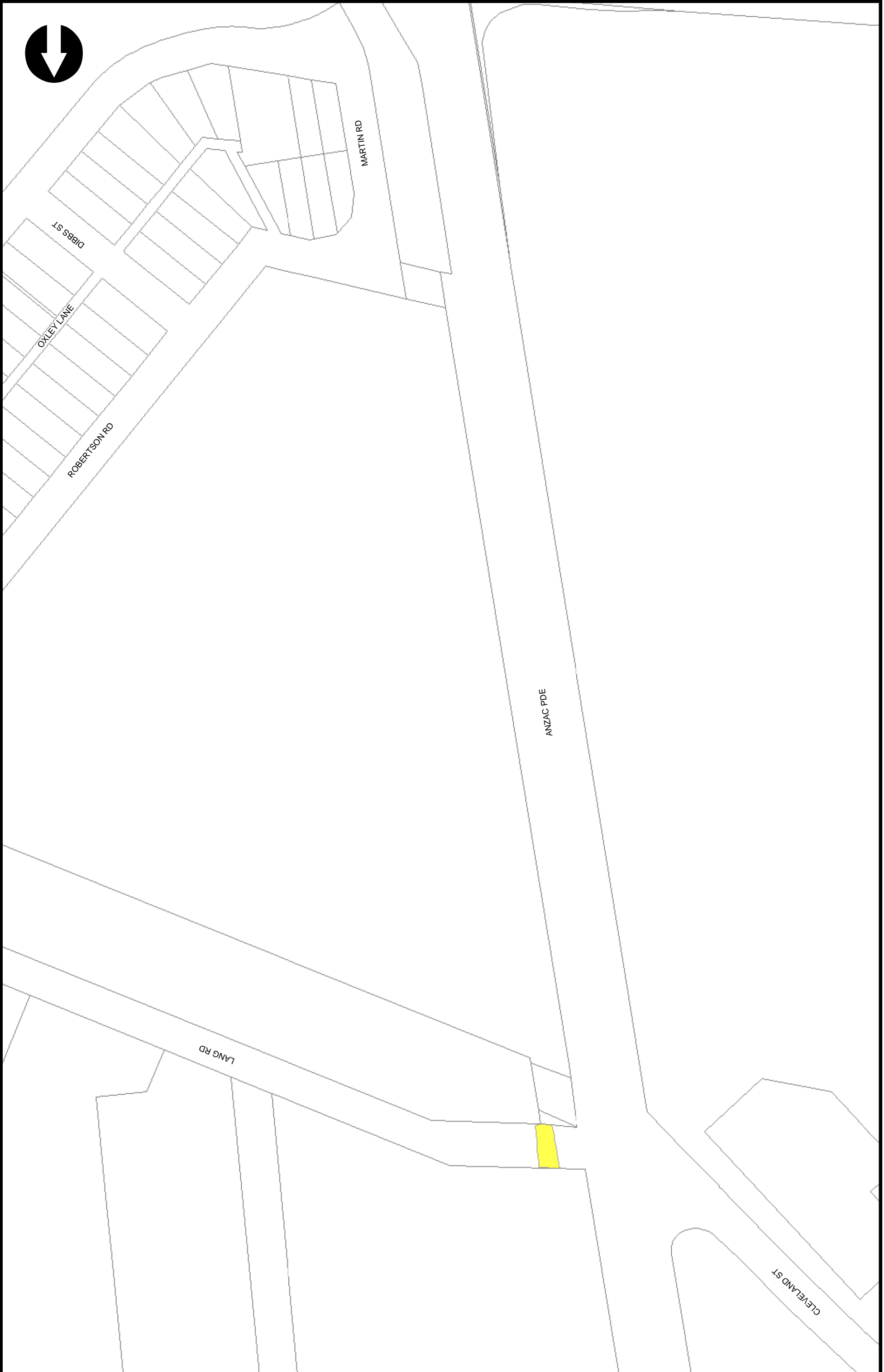
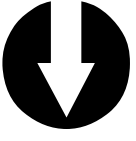
CLEVELAND ST

**CBD AND SOUTH EAST LIGHT RAIL PROJECT - TRANSITWAY
INCLUDING INNER WEST LIGHT RAIL ON-ROAD SECTION**

LEGEND

TRANSITWAY

CADASTRE



**CBD AND SOUTH EAST LIGHT RAIL PROJECT - TRANSITWAY
INCLUDING INNER WEST LIGHT RAIL ON-ROAD SECTION**

LEGEND

TRANSITWAY

CADASTRE



LEGEND

CBD AND SOUTH EAST LIGHT RAIL PROJECT - TRANSITWAY
INCLUDING INNER WEST LIGHT RAIL ON-ROAD SECTION

- TRANSITWAY
- CADASTRE



**CBD AND SOUTH EAST LIGHT RAIL PROJECT - TRANSITWAY
INCLUDING INNER WEST LIGHT RAIL ON-ROAD SECTION**

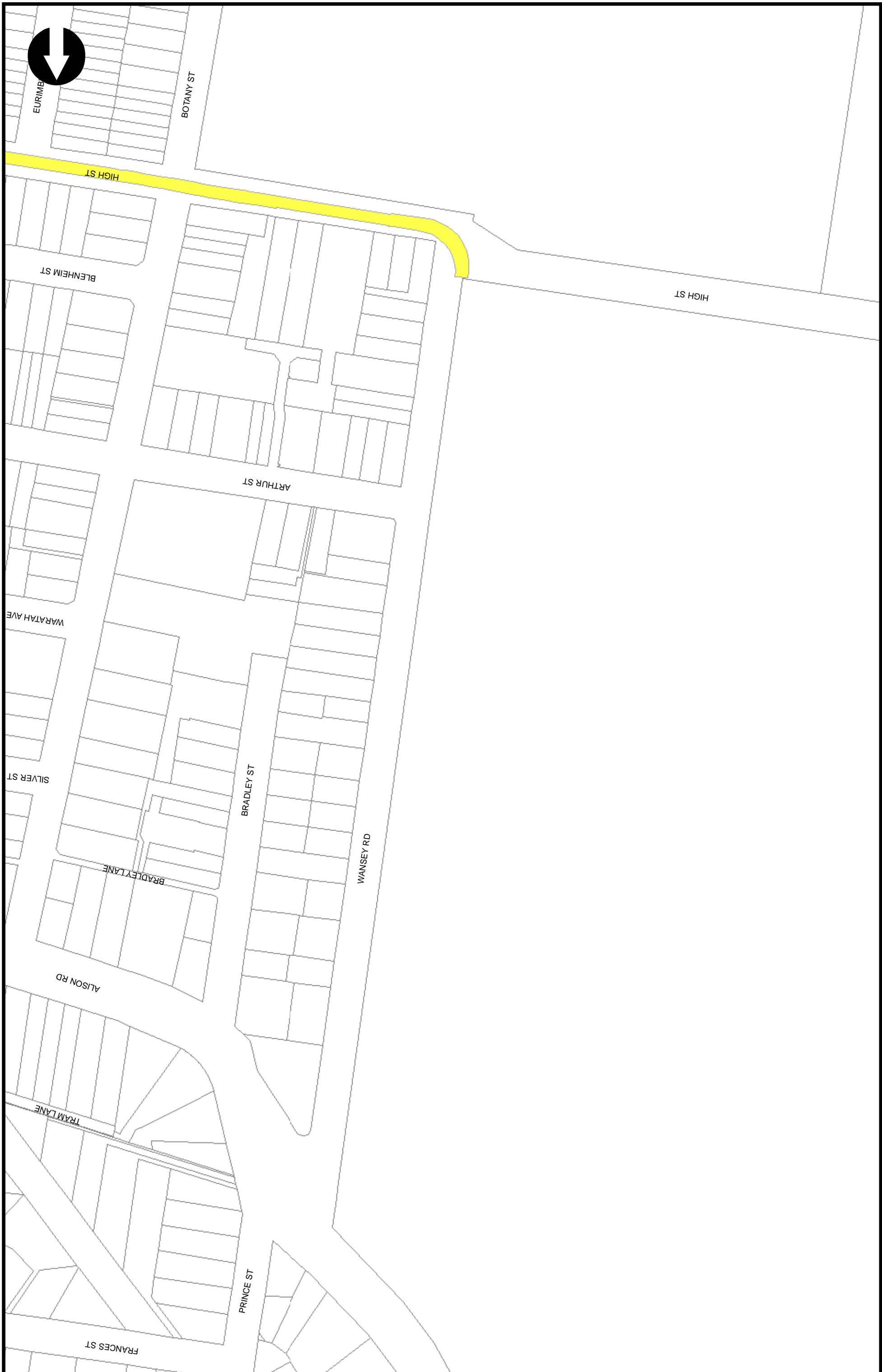
- LEGEND**
- TRANSITWAY
 - CADASTRE



LEGEND

**CBD AND SOUTH EAST LIGHT RAIL PROJECT - TRANSITWAY
INCLUDING INNER WEST LIGHT RAIL ON-ROAD SECTION**

- TRANSITWAY
- CADASTRE



**CBD AND SOUTH EAST LIGHT RAIL PROJECT - TRANSITWAY
INCLUDING INNER WEST LIGHT RAIL ON-ROAD SECTION**

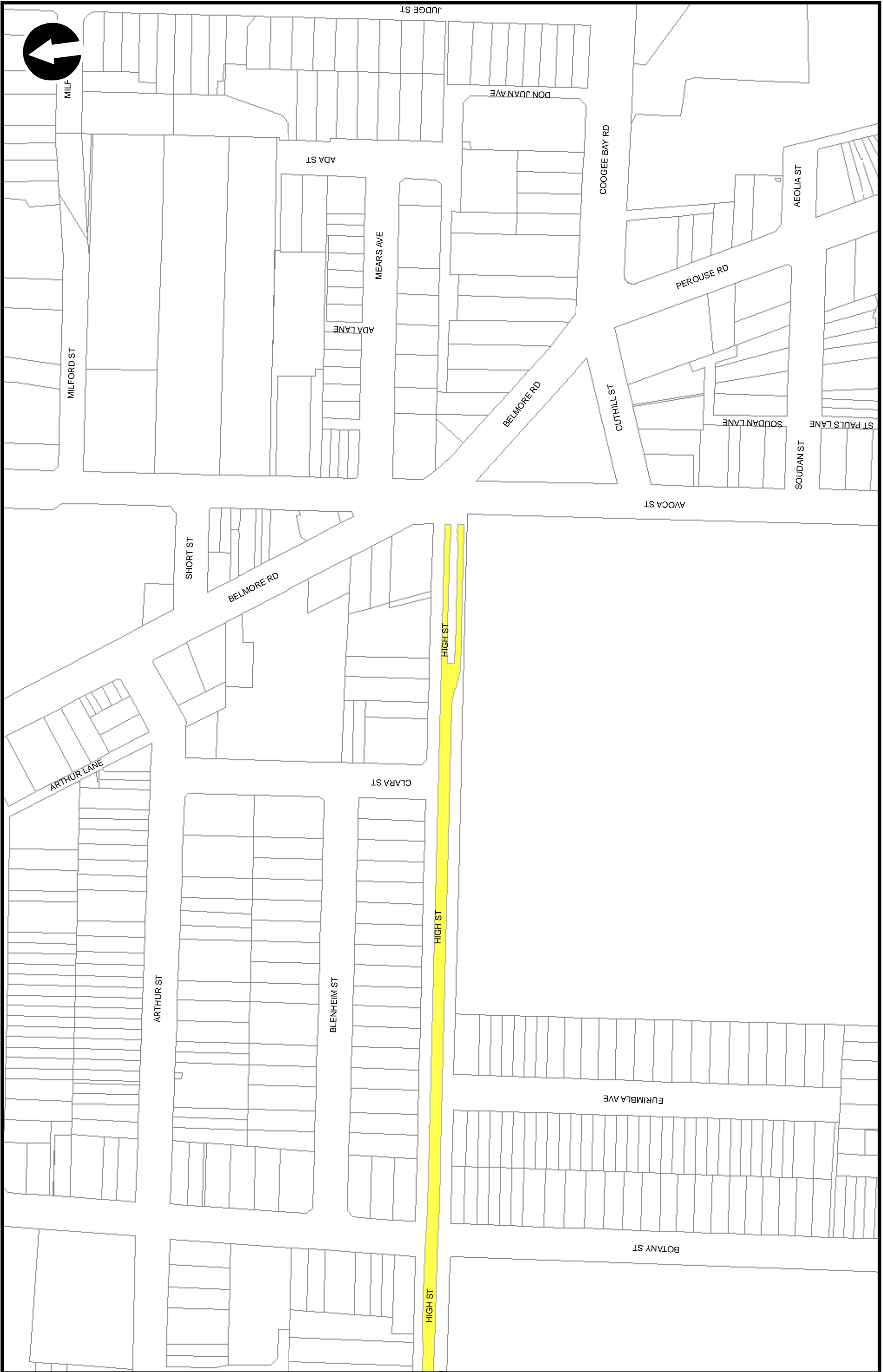
- LEGEND**
- TRANSITWAY
 - CADASTRE

**CBD AND SOUTH EAST LIGHT RAIL PROJECT - TRANSITWAY
INCLUDING INNER WEST LIGHT RAIL ON-ROAD SECTION**

LEGEND

TRANSITWAY

CADASTRE



ROADS ACT 1993

Order

Repeal of Classification as Tollway of part of the M2 Motorway at Macquarie Park

I, the Minister for Transport and Roads, by this order, hereby repeal the order published in Government Gazette No 72 dated 30 June 1993 on page 3337 which declared to be tollwork (now tollway) a then proposed work between the Lane Cove River at North Ryde and Old Windsor Road at West Pennant Hills (now known as the M2 Motorway), but only in so far as the order pertains to the land described in the schedule below.

The Hon ANDREW CONSTANCE MP
Minister for Transport and Roads

Schedule

All those pieces or parcels of land situated in the Ryde City Council area, Parish of Hunters Hill and County of Cumberland, shown as:

Lots 12 and 13 Deposited Plan 883750;

Lot 25 Deposited Plan 232697;

Lot 27 Deposited Plan 232964; and

Lot 105 Deposited Plan 1001474.

The above Lots are shown in TfNSW Plan 6002 387 AC 4006.

(TfNSW Papers: SF2020/201859)