

# *Government Gazette*

of the State of

New South Wales

**Number 144 - Roads and Transport**

**Friday, 11 April 2025**

---

The New South Wales Government Gazette is the permanent public record of official NSW Government notices. It can also contain local council, non-government and other notices.

Each notice in the Government Gazette has a unique reference number that appears in parentheses at the end of each page of the notice and can be used as a reference for that notice. For example, [NSWGG-2024-10-1].

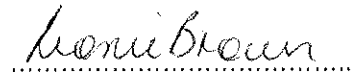
The Gazette is compiled by the Parliamentary Counsel's Office and published on the NSW Government Gazette website ([www.gazette.nsw.gov.au](http://www.gazette.nsw.gov.au)) under the authority of the NSW Government. The website contains a permanent archive of past Gazettes.

To submit a notice for gazettal, visit the website.

BOURKE SHIRE COUNCIL  
ROADS ACT 1993  
NOTICE OF ROAD CLOSURE

Notice is hereby given, under the provisions of the Roads Act 1993 (NSW), that the road as set out in the Schedule below is closed and the lands comprised therein cease to be public road and the rights of passage and access that previously existed in relation to the road is extinguished. Upon closing, title to the land, comprising the former public road, will vest in Bourke Shire Council, and is classified as operational land for the purposes of the Local Government Act 1993 (NSW):

Dated at Bourke NSW this 4<sup>th</sup> day of April 2025

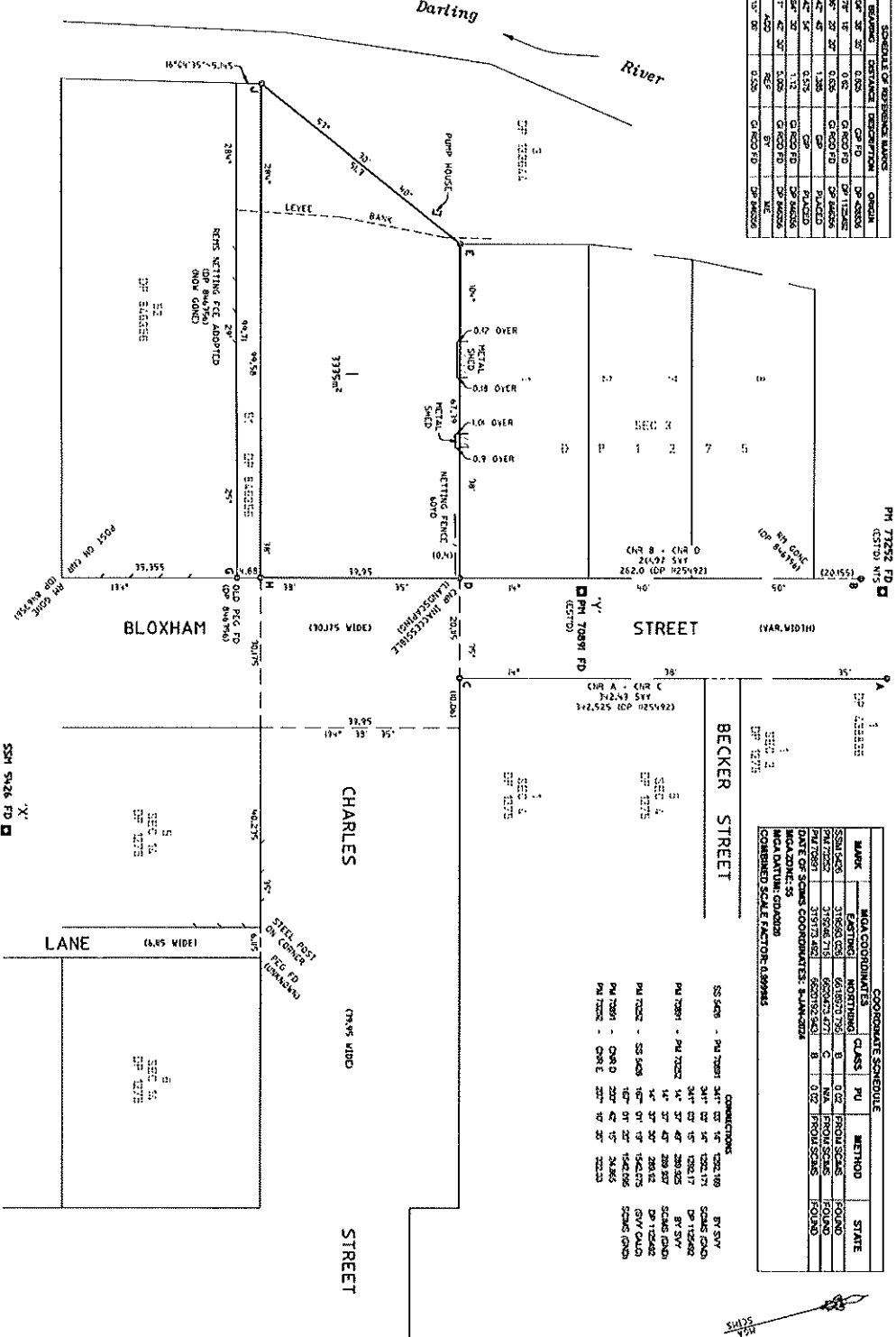


General Manager  
Bourke Shire Council

**Schedule 1**  
Lot 1 in Deposited Plan 1281795

18619285.1

ONE	BRADING	CONTAINMENT	DESCRIPTION	ORIGIN
A	100' 30"	0.00	CP TO	CP 10000
B	100' 30"	0.00	CP TO	CP 10000
C	100' 30"	0.00	CP TO	CP 10000
D	100' 30"	0.00	CP TO	CP 10000
E	100' 30"	0.00	CP TO	CP 10000
F	100' 30"	0.00	CP TO	CP 10000
G	100' 30"	0.00	CP TO	CP 10000
H	100' 30"	0.00	CP TO	CP 10000
I	100' 30"	0.00	CP TO	CP 10000
J	100' 30"	0.00	CP TO	CP 10000



MARK	MOA COORDINATES	CLASS	PU	METHOD	STATE
SS 1408	318650.000	661850.750	B	0.02	PROJ SCANS
SS 1409	318650.000	661850.750	B	0.02	PROJ SCANS
SS 1410	318650.000	661850.750	B	0.02	PROJ SCANS
SS 1411	318650.000	661850.750	B	0.02	PROJ SCANS
SS 1412	318650.000	661850.750	B	0.02	PROJ SCANS
SS 1413	318650.000	661850.750	B	0.02	PROJ SCANS
SS 1414	318650.000	661850.750	B	0.02	PROJ SCANS
SS 1415	318650.000	661850.750	B	0.02	PROJ SCANS
SS 1416	318650.000	661850.750	B	0.02	PROJ SCANS
SS 1417	318650.000	661850.750	B	0.02	PROJ SCANS
SS 1418	318650.000	661850.750	B	0.02	PROJ SCANS
SS 1419	318650.000	661850.750	B	0.02	PROJ SCANS
SS 1420	318650.000	661850.750	B	0.02	PROJ SCANS
SS 1421	318650.000	661850.750	B	0.02	PROJ SCANS
SS 1422	318650.000	661850.750	B	0.02	PROJ SCANS
SS 1423	318650.000	661850.750	B	0.02	PROJ SCANS
SS 1424	318650.000	661850.750	B	0.02	PROJ SCANS
SS 1425	318650.000	661850.750	B	0.02	PROJ SCANS
SS 1426	318650.000	661850.750	B	0.02	PROJ SCANS
SS 1427	318650.000	661850.750	B	0.02	PROJ SCANS
SS 1428	318650.000	661850.750	B	0.02	PROJ SCANS
SS 1429	318650.000	661850.750	B	0.02	PROJ SCANS
SS 1430	318650.000	661850.750	B	0.02	PROJ SCANS
SS 1431	318650.000	661850.750	B	0.02	PROJ SCANS
SS 1432	318650.000	661850.750	B	0.02	PROJ SCANS
SS 1433	318650.000	661850.750	B	0.02	PROJ SCANS
SS 1434	318650.000	661850.750	B	0.02	PROJ SCANS
SS 1435	318650.000	661850.750	B	0.02	PROJ SCANS
SS 1436	318650.000	661850.750	B	0.02	PROJ SCANS
SS 1437	318650.000	661850.750	B	0.02	PROJ SCANS
SS 1438	318650.000	661850.750	B	0.02	PROJ SCANS
SS 1439	318650.000	661850.750	B	0.02	PROJ SCANS
SS 1440	318650.000	661850.750	B	0.02	PROJ SCANS
SS 1441	318650.000	661850.750	B	0.02	PROJ SCANS
SS 1442	318650.000	661850.750	B	0.02	PROJ SCANS
SS 1443	318650.000	661850.750	B	0.02	PROJ SCANS
SS 1444	318650.000	661850.750	B	0.02	PROJ SCANS
SS 1445	318650.000	661850.750	B	0.02	PROJ SCANS
SS 1446	318650.000	661850.750	B	0.02	PROJ SCANS
SS 1447	318650.000	661850.750	B	0.02	PROJ SCANS
SS 1448	318650.000	661850.750	B	0.02	PROJ SCANS
SS 1449	318650.000	661850.750	B	0.02	PROJ SCANS
SS 1450	318650.000	661850.750	B	0.02	PROJ SCANS
SS 1451	318650.000	661850.750	B	0.02	PROJ SCANS
SS 1452	318650.000	661850.750	B	0.02	PROJ SCANS
SS 1453	318650.000	661850.750	B	0.02	PROJ SCANS
SS 1454	318650.000	661850.750	B	0.02	PROJ SCANS
SS 1455	318650.000	661850.750	B	0.02	PROJ SCANS
SS 1456	318650.000	661850.750	B	0.02	PROJ SCANS
SS 1457	318650.000	661850.750	B	0.02	PROJ SCANS
SS 1458	318650.000	661850.750	B	0.02	PROJ SCANS
SS 1459	318650.000	661850.750	B	0.02	PROJ SCANS
SS 1460	318650.000	661850.750	B	0.02	PROJ SCANS
SS 1461	318650.000	661850.750	B	0.02	PROJ SCANS
SS 1462	318650.000	661850.750	B	0.02	PROJ SCANS
SS 1463	318650.000	661850.750	B	0.02	PROJ SCANS
SS 1464	318650.000	661850.750	B	0.02	PROJ SCANS
SS 1465	318650.000	661850.750	B	0.02	PROJ SCANS
SS 1466	318650.000	661850.750	B	0.02	PROJ SCANS
SS 1467	318650.000	661850.750	B	0.02	PROJ SCANS
SS 1468	318650.000	661850.750	B	0.02	PROJ SCANS
SS 1469	318650.000	661850.750	B	0.02	PROJ SCANS
SS 1470	318650.000	661850.750	B	0.02	PROJ SCANS
SS 1471	318650.000	661850.750	B	0.02	PROJ SCANS
SS 1472	318650.000	661850.750	B	0.02	PROJ SCANS
SS 1473	318650.000	661850.750	B	0.02	PROJ SCANS
SS 1474	318650.000	661850.750	B	0.02	PROJ SCANS
SS 1475	318650.000	661850.750	B	0.02	PROJ SCANS
SS 1476	318650.000	661850.750	B	0.02	PROJ SCANS
SS 1477	318650.000	661850.750	B	0.02	PROJ SCANS
SS 1478	318650.000	661850.750	B	0.02	PROJ SCANS
SS 1479	318650.000	661850.750	B	0.02	PROJ SCANS
SS 1480	318650.000	661850.750	B	0.02	PROJ SCANS
SS 1481	318650.000	661850.750	B	0.02	PROJ SCANS
SS 1482	318650.000	661850.750	B	0.02	PROJ SCANS
SS 1483	318650.000	661850.750	B	0.02	PROJ SCANS
SS 1484	318650.000	661850.750	B	0.02	PROJ SCANS
SS 1485	318650.000	661850.750	B	0.02	PROJ SCANS
SS 1486	318650.000	661850.750	B	0.02	PROJ SCANS
SS 1487	318650.000	661850.750	B	0.02	PROJ SCANS
SS 1488	318650.000	661850.750	B	0.02	PROJ SCANS
SS 1489	318650.000	661850.750	B	0.02	PROJ SCANS
SS 1490	318650.000	661850.750	B	0.02	PROJ SCANS
SS 1491	318650.000	661850.750	B	0.02	PROJ SCANS
SS 1492	318650.000	661850.750	B	0.02	PROJ SCANS
SS 1493	318650.000	661850.750	B	0.02	PROJ SCANS
SS 1494	318650.000	661850.750	B	0.02	PROJ SCANS
SS 1495	318650.000	661850.750	B	0.02	PROJ SCANS
SS 1496	318650.000	661850.750	B	0.02	PROJ SCANS
SS 1497	318650.000	661850.750	B	0.02	PROJ SCANS
SS 1498	318650.000	661850.750	B	0.02	PROJ SCANS
SS 1499	318650.000	661850.750	B	0.02	PROJ SCANS
SS 1500	318650.000	661850.750	B	0.02	PROJ SCANS

Surveyor: MATTHEW G. THORPE  
 Date of Survey: 19/02/2024  
 Surveyor's Ref: 12281795

PLAN OF ACQUISITION FOR ROAD PURPOSES UNDER  
 THE ROAD ACT 1993 OF PART OF THE LAND WITHIN  
 CERTIFICATE OF TITLE VOLUME 2772 FOLD 229

LOCAL BOUNDARY  
 Locality: COUTH  
 Subdivision No: 12281795

Registered  
 19/02/2024

DP 1281795

## **ROADS ACT 1993**

### **Notice of Dedication of Land as Public Road at Revesby and Bankstown in the Canterbury-Bankstown Council Area**

Transport for NSW, by its delegate, dedicates the land described in the schedule below as public road under section 10 of the *Roads Act 1993*.

M Knibb  
Statutory Land Transactions Manager  
Transport for NSW

### **Schedule**

All those pieces or parcels of land situated in the Canterbury-Bankstown Council area, Parish of Bankstown and County of Cumberland, shown as:

Lot 1 Deposited Plan 380308;

Lot 1 Deposited Plan 405274;

Lot A Deposited Plan 356963;

Lot 1 Deposited Plan 357915;

Lot 1 Deposited Plan 356987;

The land delineated in the Plan annexed to Transfer F310993 and shown to have an area of 5 perches;

Lot A Deposited Plan 364345;

Lot 1 Deposited Plan 357583;

Lot 1 Deposited Plan 357244;

The land delineated in the Plan annexed to Transfer D465686 and shown to have an area of 4 perches;

The land delineated in Deposited Plan 389453 and shown to have the total area of 15 ½ perches;

The land delineated in Deposited Plan 448725 and shown to have the area of 4 ¾ perches; and

The land delineated in Deposited Plan 448725 and shown to have the area of 29 ½ perches.

(TfNSW Papers: SF2025/014618; LIC SF2015/202396)

**MARINE NOTICE**

**PROHIBITION OR REGULATION OF VESSELS AND PERSONS IN WATERS**

*Marine Safety Act 1998*  
*Section 18B*

**Location**

Murray River near the township of Moama – Entire width of the river between the Meninya Street Bridge and the Echuca Wharf.

**Duration**

- 7:00pm to 8:00pm – Sunday 20 April 2025.

**Activity or Event**

A fireworks display will be conducted over the navigable waters of the Murray River as specified above. The waterway directly around the firing location may be dangerous and hazardous to waterway users.

**Exclusion Zone**

Pursuant to Section 18B(2)(a), an **EXCLUSION ZONE** is specified during the event, which will be monitored and maintained by event staff and indicated by the presence of a control vessel.

Unauthorised vessels and persons are strictly prohibited from entering the Exclusion Zone during the time above.

Penalties may apply (Section 18B(4) - *Marine Safety Act 1998*).

For full details visit the Transport for NSW website – <https://www.nsw.gov.au/driving-boating-and-transport/using-waterways-boating-and-transport-information/restrictions-and-closures-on-nsw-waterways/marine-notices>

Marine Notice: SO2523

Date: 24 March 2025

Nathaniel Jacobs

Manager Waterways Operations South

Delegate

**MARINE NOTICE**

**PROHIBITION OR REGULATION OF VESSELS AND PERSONS IN WATERS**

*Marine Safety Act 1998*  
*Section 18B*

**Location**

Hawkesbury River, Swallow Rock Reach – adjacent to Riverside Oaks Golf Course.

**Duration**

- 12:00pm to 5:00pm - Tuesday 15 April 2025.
- 6:00am to 2:00pm - Wednesday 16 April 2025.
- 6:00am to 2:00pm - Thursday 17 April 2025.

**Activity or Event**

A filming production event will be conducted on the navigable waters of the Hawkesbury River as specified above. Supporting vessels will be active in the area during the above times managing high risk activities from the shoreline. Control vessels will be stopping traffic intermittently throughout each day for safety of workers.

**Exclusion Zone**

Pursuant to Section 18B(2)(a), an **EXCLUSION ZONE** is specified during the event, which will be monitored and indicated by the presence of control vessels.

Unauthorised vessels and persons are strictly prohibited from entering the Exclusion Zone during the times above.

Penalties may apply (Section 18B(4) – *Marine Safety Act 1998*).

For full details visit the Transport for NSW website – <https://www.nsw.gov.au/driving-boating-and-transport/using-waterways-boating-and-transport-information/restrictions-and-closures-on-nsw-waterways/marine-notices>

Marine Notice: SY2508

Date: 08 April 2025

Darryl Lennox

Manager Waterways Operations: Hawkesbury River/Broken Bay

Delegate

**MARINE NOTICE**

**PROHIBITION OR REGULATION OF VESSELS AND PERSONS IN WATERS**

*Marine Safety Act 1998*  
*Section 18B*

**Location**

Manning River, Taree - between Martin Bridge and Dumaresq Island.

**Duration**

8.00am to 5.00pm on the following dates:

- Friday 18 April 2025.
- Saturday 19 April 2025.
- Sunday 20 April 2025.
- Sunday 3 August 2025.

**Activity or Event**

A powerboat racing event will be conducted on the navigable waters of the Manning River specified above. The event will involve the use of powered vessels operating at speed, presenting a significant potential hazard to other waterway users.

**Exclusion Zone**

Pursuant to Section 18B(2)(a), an **EXCLUSION ZONE** is specified during the event, which will be indicated and monitored by the presence of control vessels.

Unauthorised vessels and persons are strictly prohibited from entering the Exclusion Zone.

Penalties may apply (Section 18B(4) - *Marine Safety Act 1998*).

For full details visit the Transport for NSW website – <https://www.nsw.gov.au/driving-boating-and-transport/using-waterways-boating-and-transport-information/restrictions-and-closures-on-nsw-waterways/marine-notice>

Marine Notice NH2527

Date: 10/04/2025



Todd Adamson

A/Manager Waterways Operations Hunter

Delegate

**MARINE NOTICE**

**PROHIBITION OR REGULATION OF VESSELS AND PERSONS IN WATERS**

*Marine Safety Act 1998*  
*Section 18B*

**Location**

Port Jackson, Sydney Harbour - between Grotto Point and North Head.

**Duration**

- 9:00am to 1:00pm – Tuesday 29 April 2025.
- 9:00am to 1:00pm – Wednesday 30 April 2025.

**Activity or Event**

A filming production event will be held on the navigable waters of Port Jackson as specified above.

**Exclusion Zone**

Pursuant to Section 18B(2)(a), an **EXCLUSION ZONE** is specified during the event. The Zone will extend for 300 metres on all sides of the authorised filming vessels which will be monitored by an event safety vessel and patrolled by a Maritime vessel (see attached map).

Unauthorised vessels and persons are strictly prohibited from entering the Exclusion Zone during the times above.

Penalties may apply (Section 18B(4) - *Marine Safety Act 1998*).

For full details visit the Transport for NSW website – <https://www.nsw.gov.au/driving-boating-and-transport/using-waterways-boating-and-transport-information/restrictions-and-closures-on-nsw-waterways/marine-notices>

Marine Notice: SE2506

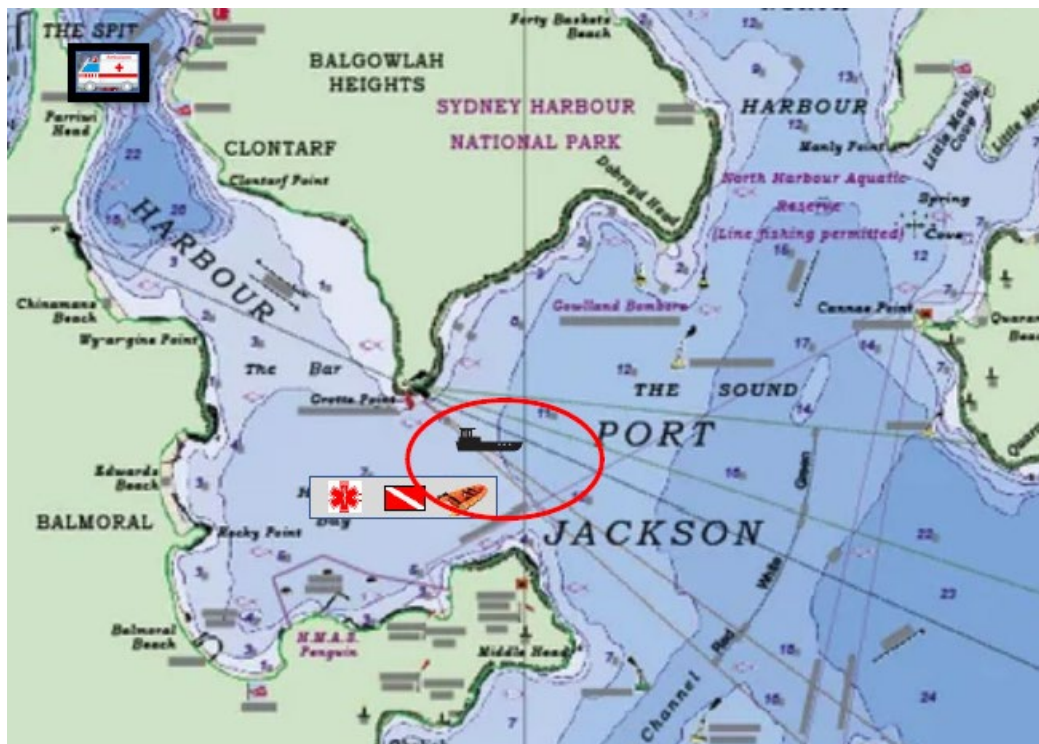
Date: 2 April 2025

Lisa Nott

Senior Special Aquatic Events Officer

OFFICIAL

Delegate



OFFICIAL

**MARINE NOTICE**

**PROHIBITION OR REGULATION OF VESSELS AND PERSONS IN WATERS**

*Marine Safety Act 1998*  
*Section 18B*

**Location**

Wollongong Harbour – all navigable waters bounded and marked by buoys between:

- The shoreline adjacent to the intersection of Harbour Street and Cliff Road (adjacent to Levendi café); to
- The centre of the entrance to the Wollongong Harbour; to
- The eastern side of the remnants of the stone structure adjacent to the Wollongong Slipway.

**Duration**

- 5:30am to 1:45pm – Saturday 27 April 2025.

**Activity or Event**

The swimming legs of a triathlon event will be conducted on the navigable waters of the Wollongong Harbour as specified above.

**Exclusion Zone**

Pursuant to Section 18B(2)(a), an **EXCLUSION ZONE** is specified during the event, which will extend 50m around the course which will be indicated by the presence of course rounding buoys and monitored by control vessels.

Unauthorised vessels and persons are strictly prohibited from entering the Exclusion Zone during the times above.

Penalties may apply (Section 18B(4) - *Marine Safety Act 1998*).

For full details visit the Roads and Maritime Services website – <https://www.nsw.gov.au/driving-boating-and-transport/using-waterways-boating-and-transport-information/restrictions-and-closures-on-nsw-waterways/marine-notice>

Marine Notice: SO2522

Date: 20 March 2025

Nathaniel Jacobs

OFFICIAL

Manager Operations South

Delegate

OFFICIAL

**MARINE NOTICE**

**PROHIBITION OR REGULATION OF VESSELS AND PERSONS IN WATERS**

*Marine Safety Act 1998*  
*Section 18B*

**Location**

Lake Mulwala – near the locality of the Mulwala Water Ski Club and within an area bounded by:

- The Mulwala foreshore between the land-based localities of the Yarrawonga Yacht Club and west to the Melbourne Street Bridge,
- North to a location directly east of the Lake Edge Resort,
- East into Lake Mulwala for approximately 750 metres,
- South towards Yarrawonga Yacht Club.

**Duration**

- 9:00am to 5:30pm – Friday 25 April 2025.
- 7:00am to 5:30pm – Saturday 26 April 2025.
- 7:00am to 5:30pm – Sunday 27 April 2025.

**Activity or Event**

A competitive powerboat racing event will be conducted on the navigable waters of Lake Mulwala as specified above. The event will involve the use of high-speed power vessels, presenting a significant potential hazard to other waterway users. Support vessels will be present to manage the event.

**Exclusion Zone**

Pursuant to Section 18B(2)(a), an **EXCLUSION ZONE** is specified during the event, which will be indicated by buoys, monitored by control vessels and maintained by patrol vessels. In areas within the location where there are no buoys, the Exclusion Zone will be indicated by control vessels on the perimeter.

**Special Restrictions**

A 'Transit Lane' will be established along the foreshore from the Lake Mulwala Holiday Park, south of the Mulwala Water Ski Club, to the Melbourne Street bridge, Mulwala, within which a control vessel may, at times during the event, authorise local vessel traffic to pass through.

Pursuant to Section 18B(2)(b) of the *Marine Safety Act 1998*, **SPECIAL RESTRICTIONS** are applicable to vessels using the transit lane:

- Maximum speed limit of 4 knots, and

- Towing or persons is prohibited, and
- Minimal wash must be produced.

In addition, the following special restriction is applicable to vessels operating in the vicinity of the Exclusion Zone, within the main basin of Lake Mulwala between the landmarks of Rams Head Point to the east, the Melbourne Street Bridge to the south and the Mulwala Canal entrance to the north:

- Minimal wash must be produced.

Penalties may apply (Section 18B(4) – *Marine Safety Act 1998*).

For full details visit the Transport for NSW website – <https://www.nsw.gov.au/driving-boating-and-transport/using-waterways-boating-and-transport-information/restrictions-and-closures-on-nsw-waterways/marine-notices>

Marine Notice: SO2526

Date: 9 April 2025

Nathaniel Jacobs

Manager Waterways Operations South

Delegate